

# Eternity Armchair w/ upholstery

Coffee shell waste mixed with recycled industrial plastic

The shell of the Eternity chair is made of Matek®. Innovative technology allows us to recycle fibre-based waste materials with recycled plastic waste. The Chair itself is a very comfortable, functional stackable chair with industrial and sculptural features. Eternity is designed for disassembly, meaning that the design allows each component in its purest form to recycle into new production circles.



**Uphol. Seat**  
Re-wool 198 Grey



**Full Front Uphol.**  
Re-wool 198 Grey



**Uphol. Seat**  
Re-wool 218 Beige



**Full Front Uphol.**  
Re-wool 218 Beige



**Uphol. Seat**  
Re-wool 378 Rust



**Full Front Uphol.**  
Re-wool 378 Rust



**Designed by**  
Space Copenhagen

**Item no.**  
11004 Eternity Armchair,  
– Uphol. Seat Re-wool 198 Grey\*  
11008 Eternity Armchair,  
– Uphol. Seat Re-wool 218 Beige\*  
11014 Eternity Armchair,  
– Uphol. Seat Re-wool 378 Rust\*  
11006 Eternity Armchair,  
– Full Front uphol. Re-wool 198 Grey\*  
11012 Eternity Armchair,  
– Full Front uphol. Re-wool 218 Beige\*  
11016 Eternity Armchair,  
– Full Front uphol. Re-wool 378 Rust\*

*\*Variation possible due to recycled materials*

**Country of origin**  
Latvia

**Materials**  
Coffee shell waste from BKI's coffee roasting process mixed with recycled industrial plastic waste from GROHE. Approx. 70% industrial plastic waste and 30% coffee shells. 20% recycled steel legs, gunmetal powder coated finish

**Gliders**  
Hard plastic gliders installed as standard

**Dimensions**  
W 59 cm D 55 cm H 87.5 cm SH 47,5 cm  
/ W 23,2" D 21.6" H 34.4" SH 18,5"

**Weight**  
Uphol Seat. 7,45 kg / 16,4 lbs  
Full Front uphol. 7,6 kg / 16,8 lbs

**Packaging** 1 box / 2 pcs.

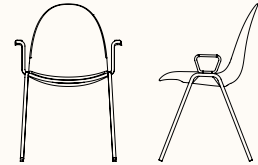
**Maintenance**  
Please follow our material cleaning and care guide [here](#)

**Environment**  
Indoor

**mater**

# Mater Sustainability Factsheet

Eternity Armchair  
w/upholstery



## Made from

Matek® and partly recycled steel

**Item no. 11004**  
Coffee Waste Black – Uphol.  
Seat Re-wool 198 Grey

**CO<sub>2</sub> Footprint**  
50 kg CO<sub>2</sub>e

**= 4330g  
of waste materials**

**Item no. 10008**  
Coffee Waste Black – Uphol.  
Seat Re-wool 218 Beige

**CO<sub>2</sub> Footprint**  
50 kg CO<sub>2</sub>e

**= 4330g  
of waste materials**

**Item no. 10014**  
Coffee Waste Black – Uphol.  
Seat Re-wool 378 Rust

**CO<sub>2</sub> Footprint**  
50 kg CO<sub>2</sub>e

**= 4330g  
of waste materials**

\*calculated using Målbar Software V. 2.942 on the 12.08.22

**Item no. 11006**  
Coffee Waste Black – Full Front  
uphol. Re-wool 198 Grey

**CO<sub>2</sub> Footprint**  
60 kg CO<sub>2</sub>e

**= 4330g  
of waste materials**

**Item no. 10012**  
Coffee Waste Black – Full  
Front uphol. Re-wool 218 Beige

**CO<sub>2</sub> Footprint**  
60 kg CO<sub>2</sub>e

**= 4330g  
of waste materials**

**Item no. 10016**  
Coffee Waste Black – Full Front  
uphol. Re-wool 378 Rust

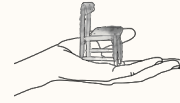
**CO<sub>2</sub> Footprint**  
60 kg CO<sub>2</sub>e

**= 4330g  
of waste materials**

\*calculated using Målbar Software V. 2.942 on the 12.08.22

# Mater Sustainability Factsheet

## Matek™



### Matek®

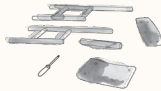
In alliance with large corporations, Mater has invented a patented technology that recycles their fibre and plastic waste. This resulting in five new unique materials that we've named Matek®.

Read more about Matek® [here](#)



### Steel

Our Steel is composed of 20% recycled steel. Steel is a strong and light material with the quality that it can be processed in unlimited ways.



### Repair for long lasting

Good products, are made to be used. To give the products the longest possible life, we want to make it easy for you to repair them yourself.

Contact our customer service for more info [here](#)

### Mater Take-Back

We unhesitatingly offer to take all our furniture made from Matek® back at the end of its life to recycle it into new furniture.

Read more about how Mater Take-Back works [here](#)



### Upholstery

Re-wool is a rich upholstery textile with a sustainable profile using 45% recycled wool. The textile is partly made by reusing scraps from Kvadrat's yarn spinners in the UK. Re-wool is designed by Margrethe Odgaard.



### CO<sub>2</sub> Footprint

At Mater, we believe in the importance of transparency. By doing Life Cycle Assessments (LCA) on our furniture, we can analyse the total climate emission for each of our product's lifespan.

Read more about how we measure the CO<sub>2</sub> footprint [here](#)

**mater**

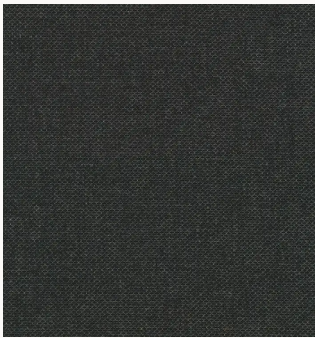
**Other Upholstery Options**

For fabric requests beyond the 3 standard colors in our assortment, there is a minimum order quantity of 25 pieces. There will be an expected production lead time of 8 weeks for fabrics from Kvadrat, Gabriel or Sørensen Leather. Request on fabrics from other vendors will be handled case by case – please reach out to your local Mater contact.

**Prices**

Orders will be quoted with an additional price per chair covering only extra cost for the textile/leather.

---

**Chosen textiles from Kvadrat****Re-wool 198**

Composition:  
45% recycled wool, 45%  
new wool worsted and  
10% nylon

**Re-wool 218**

Composition:  
45% recycled wool, 45%  
new wool worsted and  
10% nylon

**Re-wool 378**

Composition:  
45% recycled wool, 45%  
new wool worsted and  
10% nylon

---