

Dear customers

Thank you for purchasing a KARIMOKU NEW STANDARD product. Please follow the guide and use the product correctly. Keep this manual at hand for future reference whenever you may need it.

<Contents>

Assembly instruction

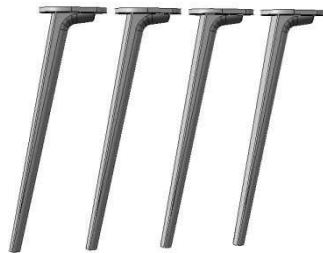
- ①. Part names
- ②. Assembly of Legs and Tabletop

①Part names

●Tabletop × 1



●Legs × 4



●Bolts

D344TBME (M6 × 30) × 16

●Hex wrench × 1



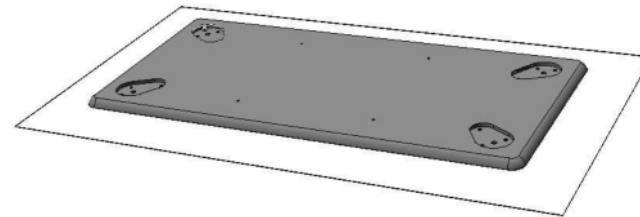
②Assembly of Legs and Tabletop

Attach the legs to the tabletop in the following procedure.

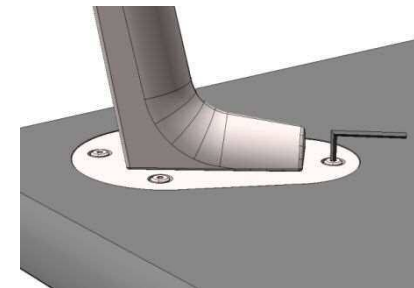
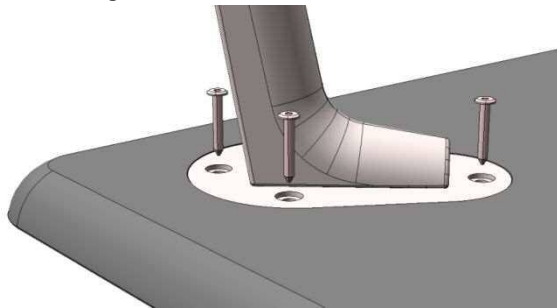


- CAUTION: Handle carefully when turning over the product to avoid injury or any damage.
- Choose a flat and smooth floor, make sure to remove any sharp objects before placing the product.
- Use a protective mat or rug to avoid damaging the floor surface and the product.

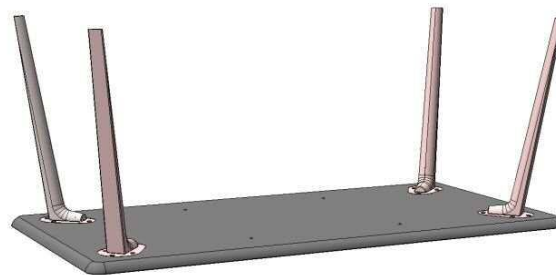
1. Turn the tabletop upside down and place it on a mat or rug on a flat floor.



2. Place the mounting plate of the leg to match the designated area on the tabletop, insert the bolts and then tighten with the attached hexagonal wrench.



3. Attach all 4 legs in the same way.



4. Turn the table upright and place in your desired location.



Handle by more than 1 person when turning over the table, to prevent scratching the floor or damaging the table itself.