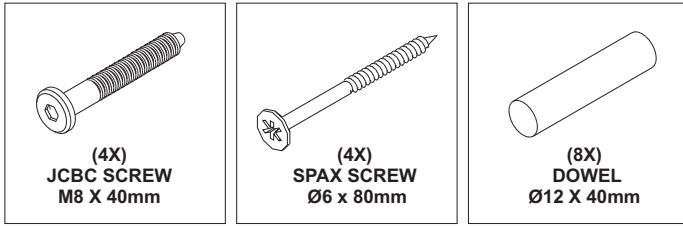
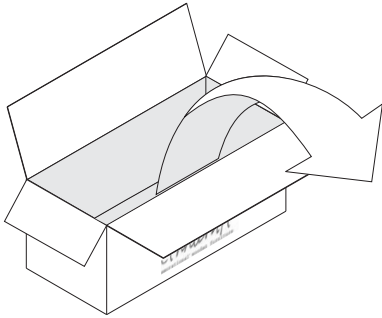
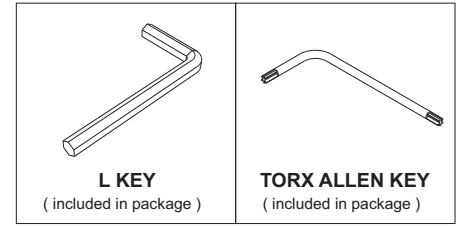


OAK MIKADO DINING TABLE ASSEMBLY INSTRUCTION FOR DINING TABLE INSTALLATION

HARDWARES

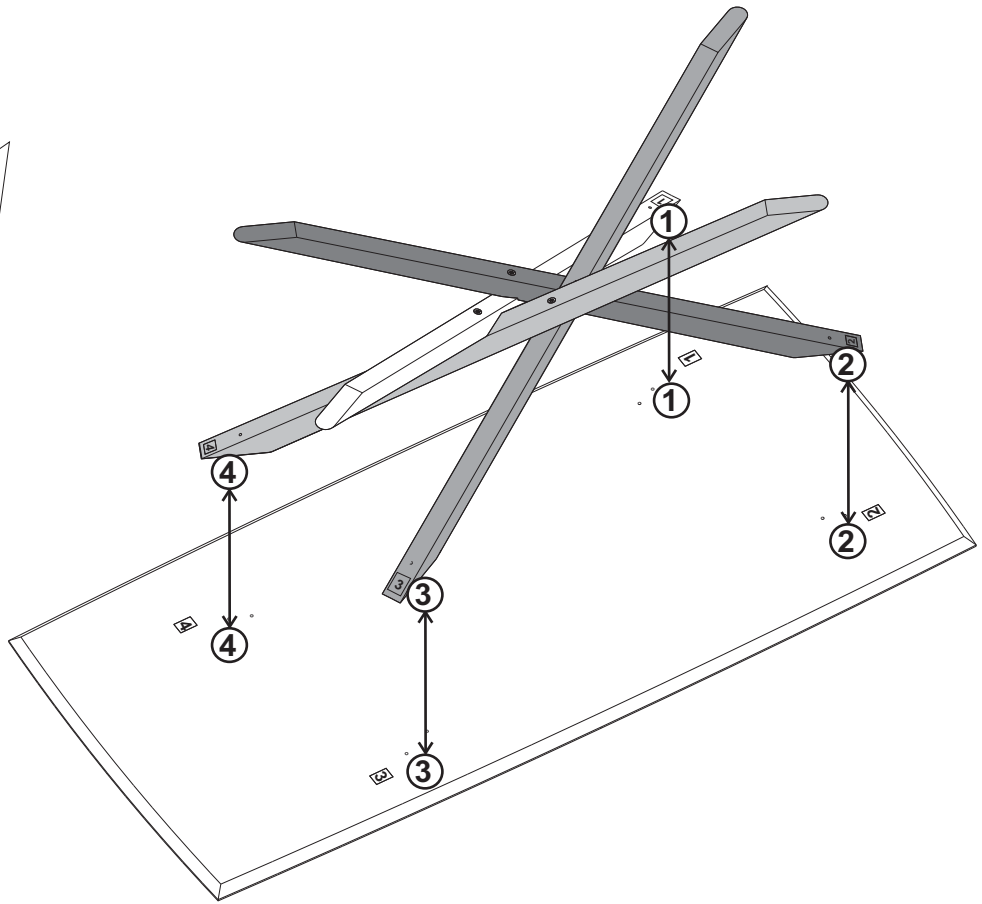


TOOLS

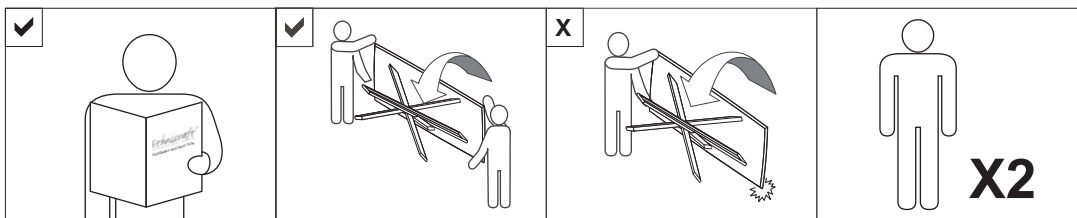


IN YOUR PACKAGE :
ASSEMBLY INSTRUCTION
HARDWARES (AS LISTED ABOVE)

PARTS TO BE INSTALLED
1. TOP PANEL 1pc
2. LEGS 4 set



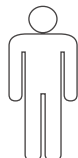
NOTICE



SYMBOLS



DIRECTION



NUMBER OF
PERSON NEEDED



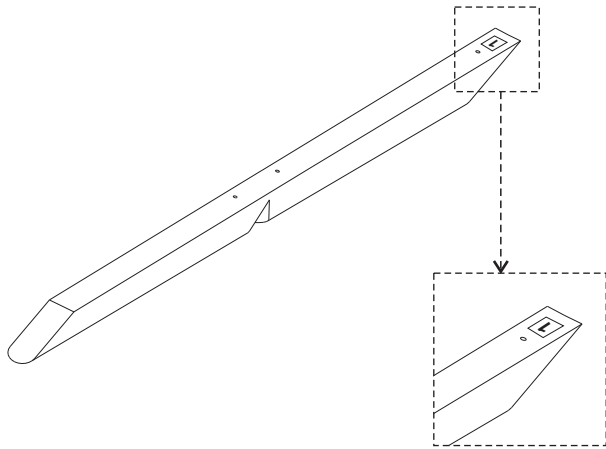
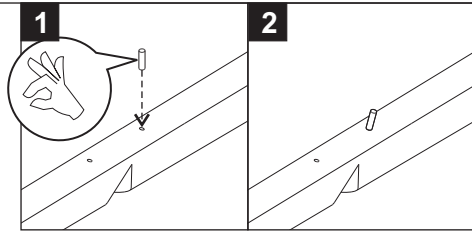
USE HAND



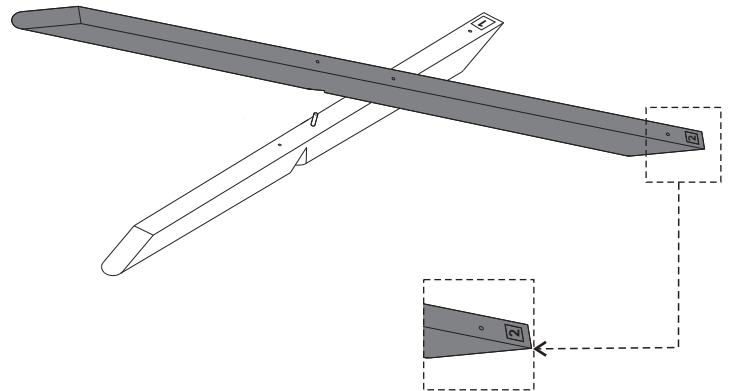
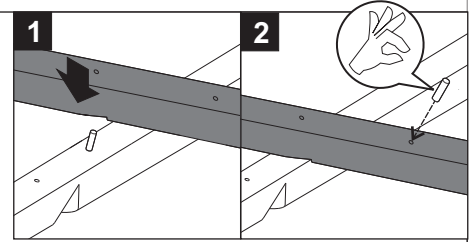
USE L KEY
TO TIGHTEN

OAK MIKADO DINING TABLE ASSEMBLY INSTRUCTION FOR DINING TABLE INSTALLATION

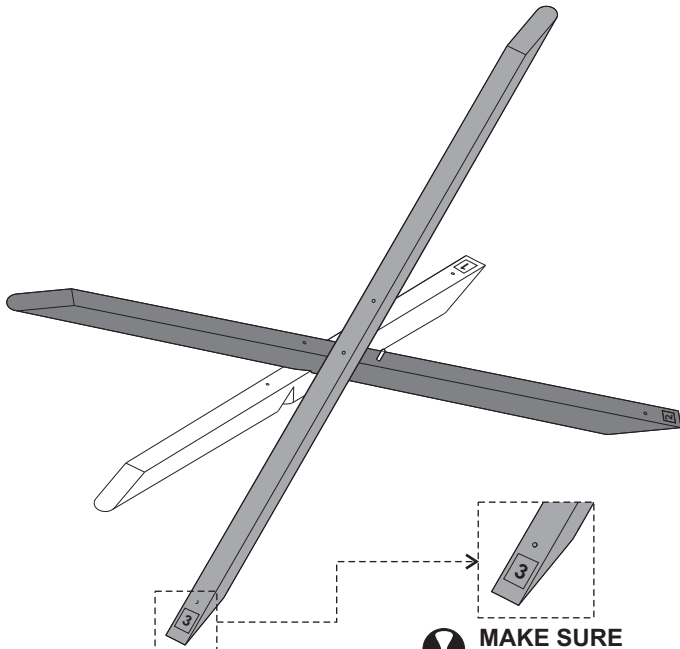
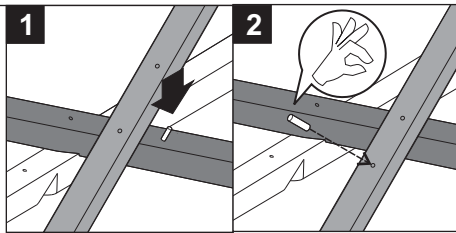
A. ASSEMBLING THE LEGS



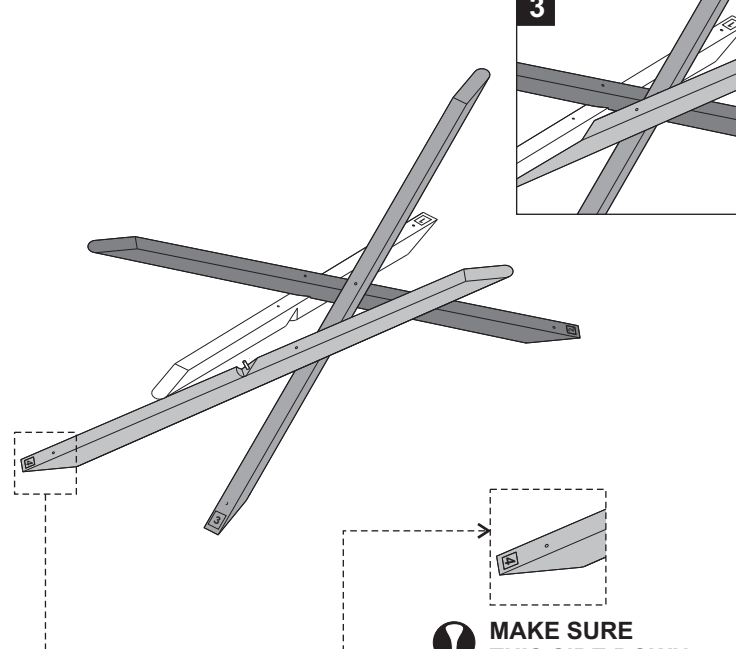
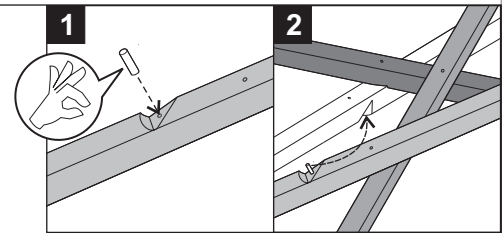
! MAKE SURE THIS SIDE DOWN



! MAKE SURE THIS SIDE DOWN



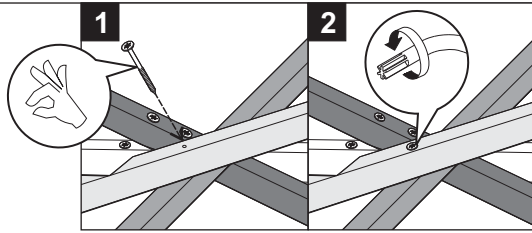
! MAKE SURE THIS SIDE DOWN



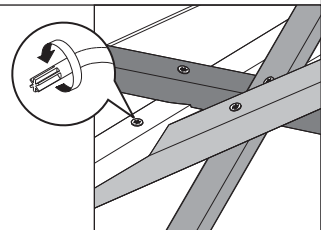
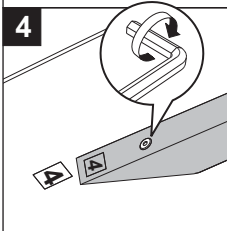
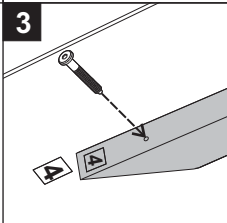
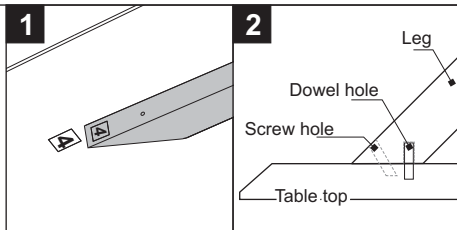
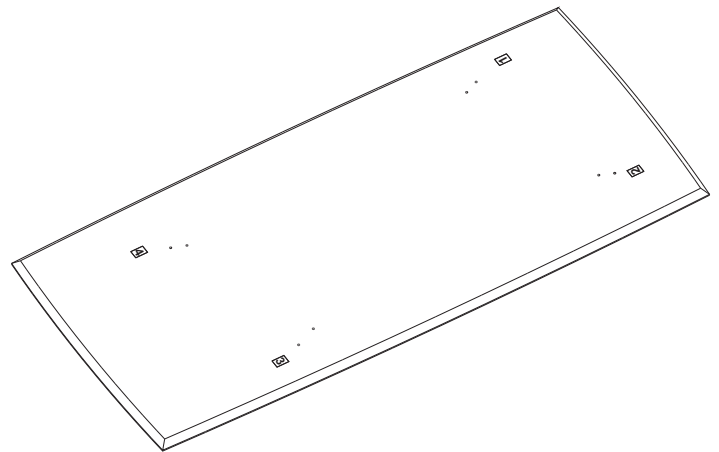
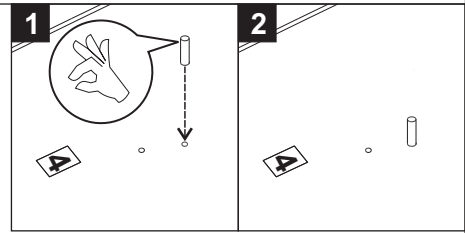
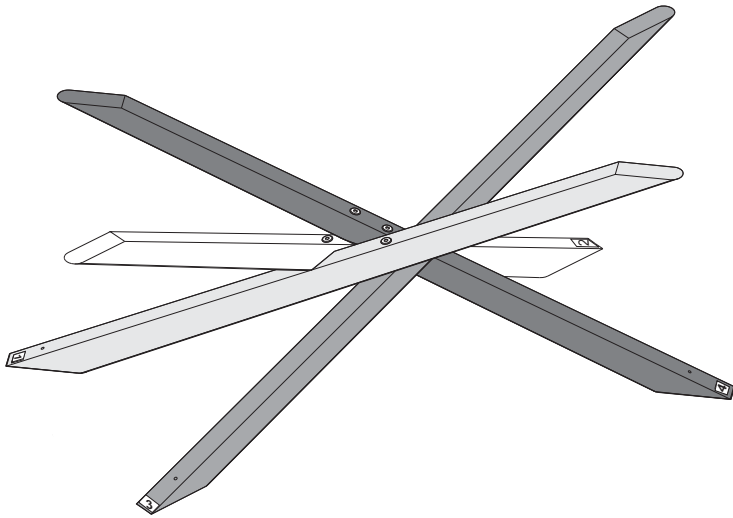
! MAKE SURE THIS SIDE DOWN

OAK MIKADO DINING TABLE ASSEMBLY INSTRUCTION FOR DINING TABLE INSTALLATION

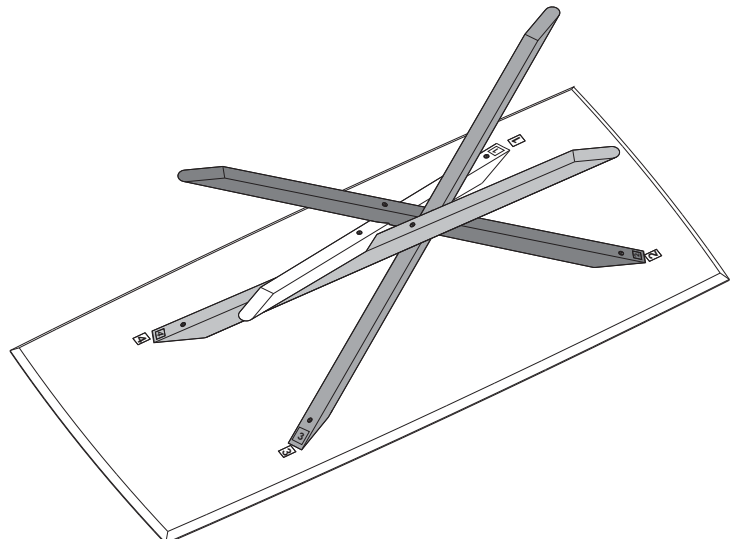
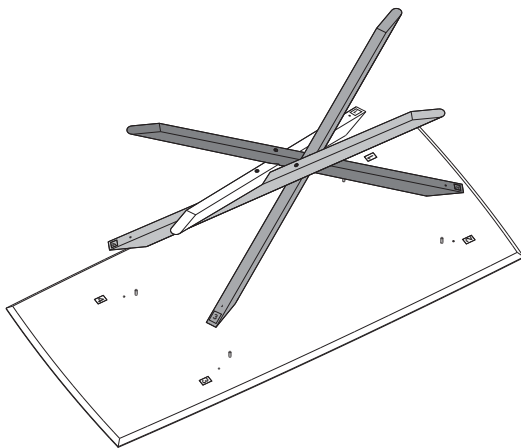
B. INSTALLING THE LEGS TO THE TOP PANEL



- USE SPAX SCREW
- DO NOT FULLY TIGHTEN



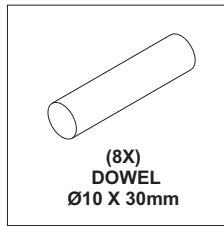
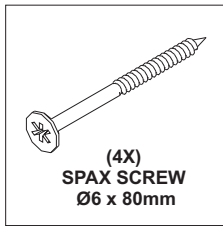
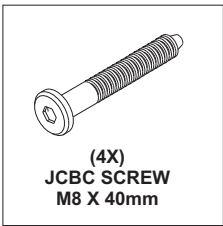
- TIGHTEN FULLY
- 4 SPAX SCREWS



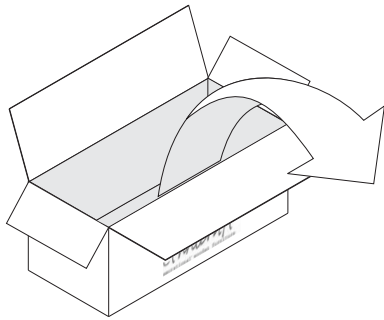
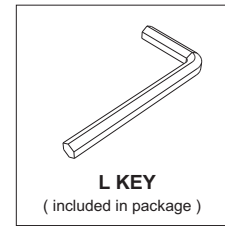
- USE JCBC SCREW
- TIGHTEN FULLY
- MAKE SURE THE NUMBERING AT THE LEGS AS WELL ON THE TABLE TOP IS CORRECT.

50545 OAK MIKADO ROUND DINING TABLE ASSEMBLY INSTRUCTIONS FOR DINING TABLE INSTALLATION

HARDWARE ENCLOSED

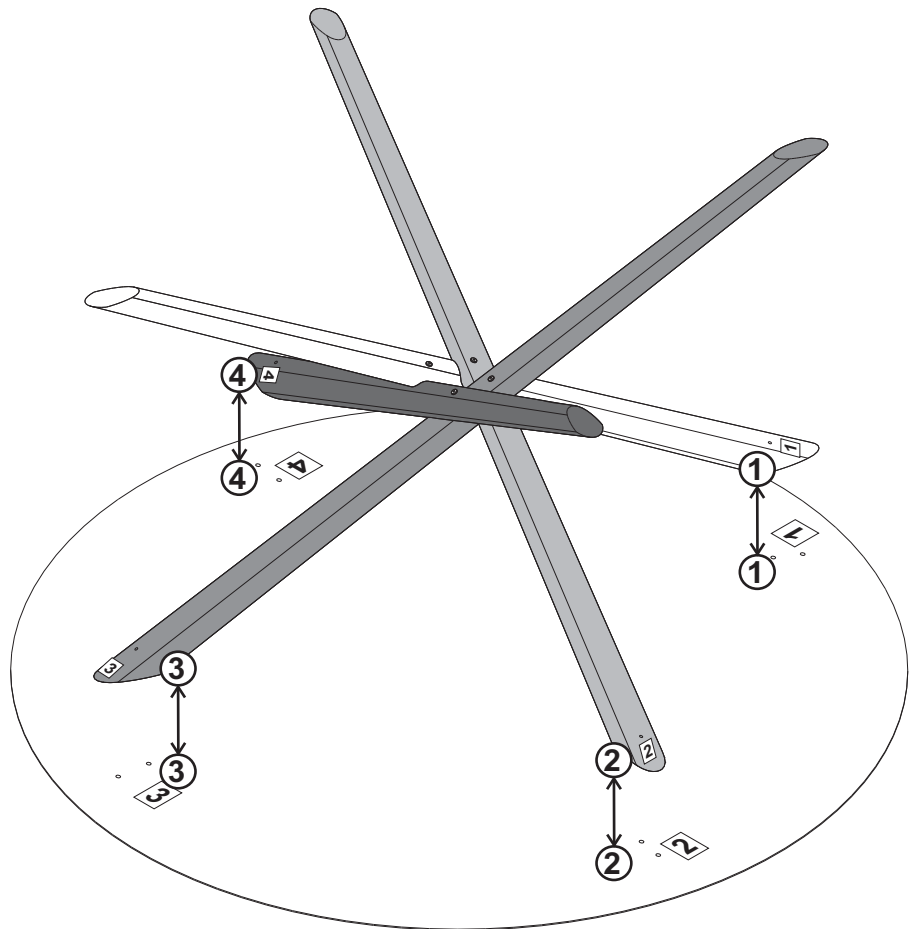


TOOLS



IN YOUR PACKAGE :
ASSEMBLY INSTRUCTIONS
HARDWARES (AS LISTED ABOVE)

- PARTS TO BE INSTALLED**
1. TOP PANEL 1pc
2. LEGS 4 set



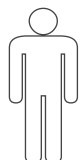
NOTICE

✓ 	✓ 	X 	 X3
-------	-------	-------	---------------

SYMBOLS



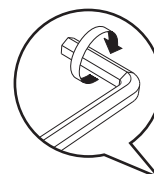
DIRECTION



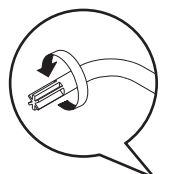
NUMBER OF
PERSON NEEDED



USE HAND



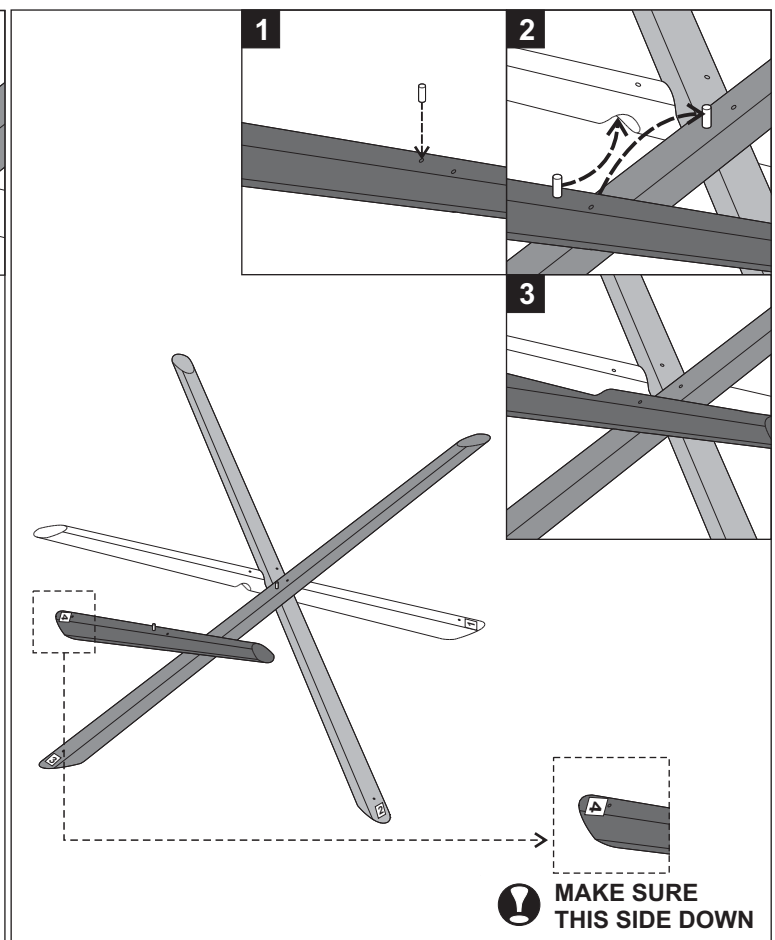
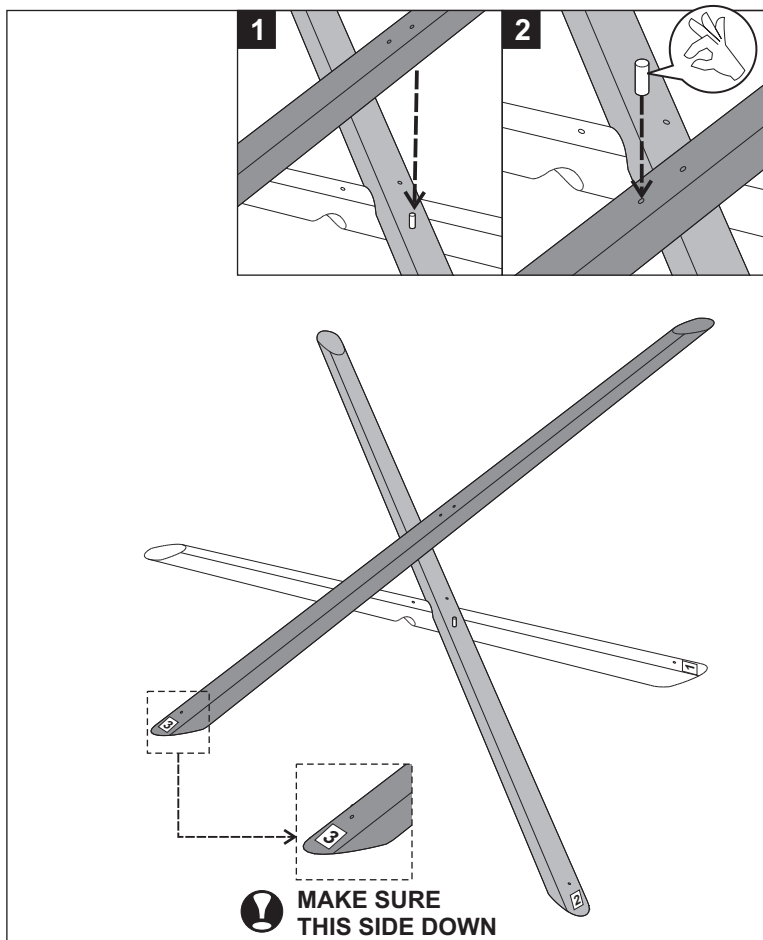
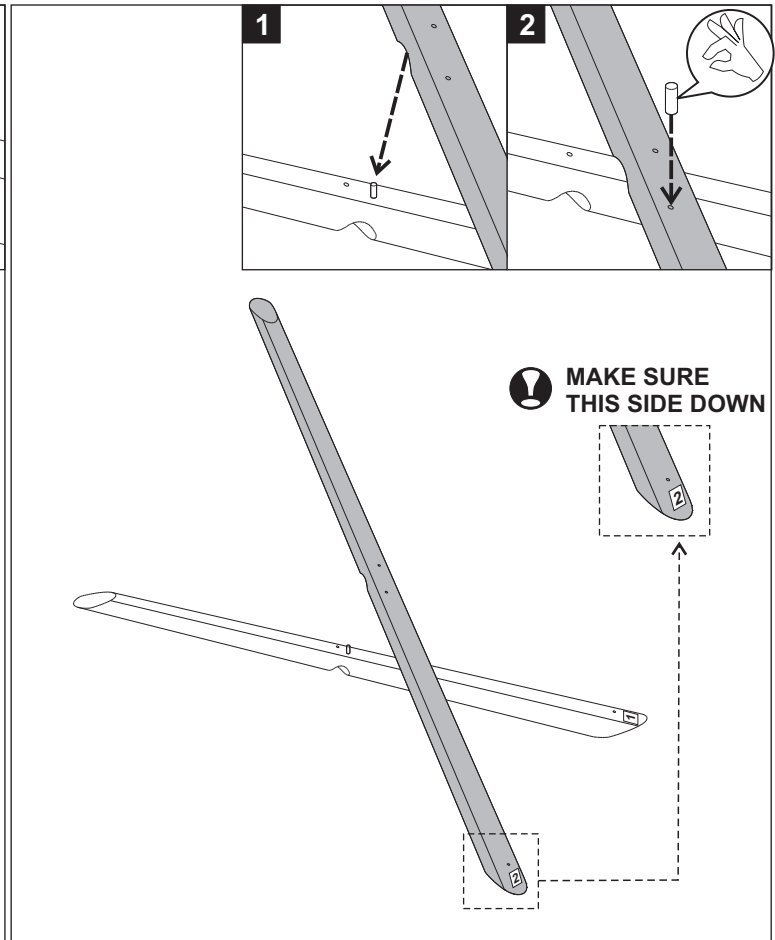
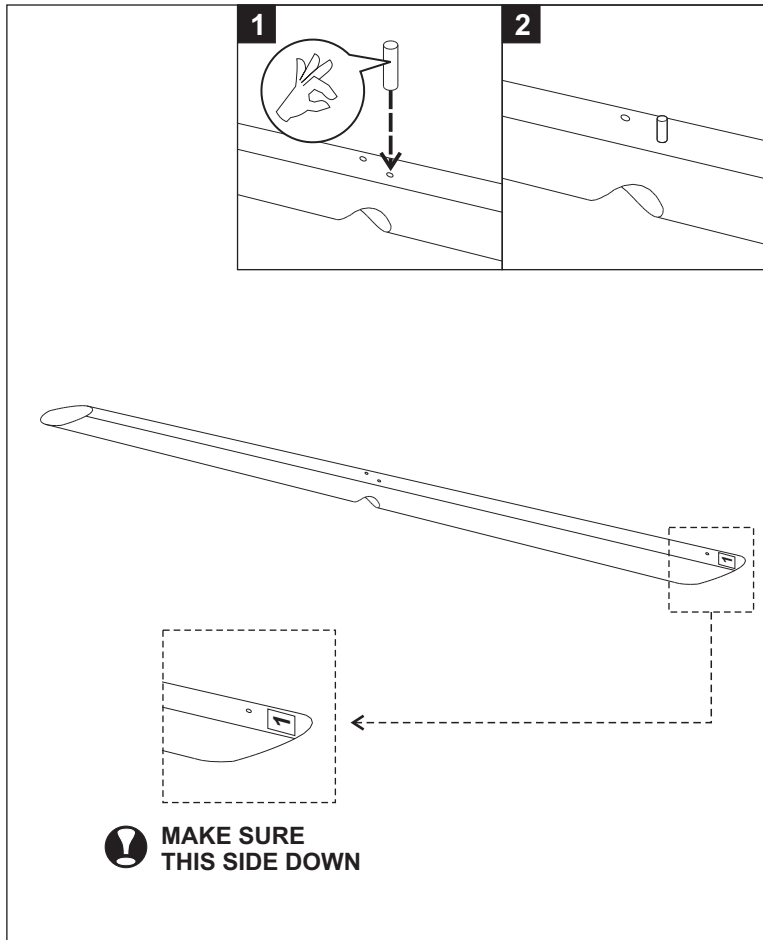
USE L KEY
TO TIGHTEN



USE TORX ALLEN
TO TIGHTEN

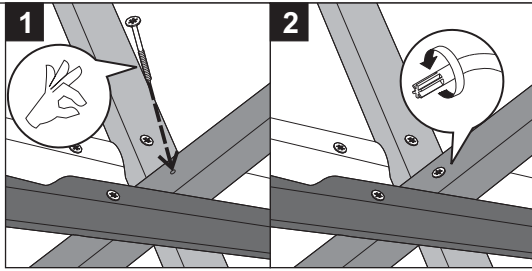
50545 OAK MIKADO ROUND DINING TABLE ASSEMBLY INSTRUCTIONS FOR DINING TABLE INSTALLATION

A. ASSEMBLING THE LEGS

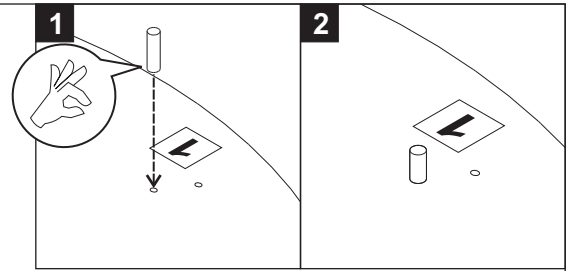
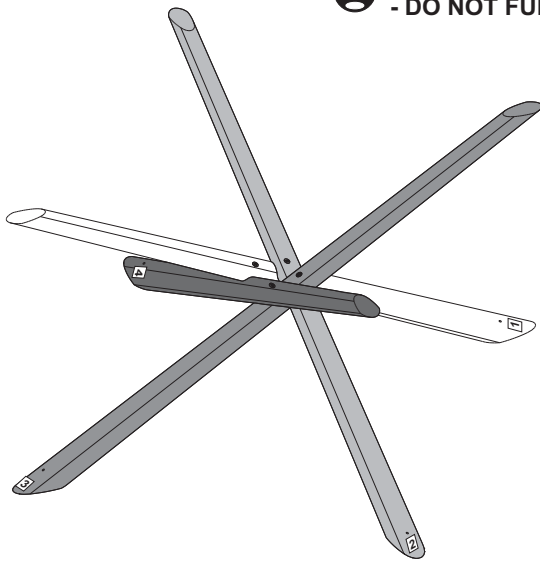


50545 OAK MIKADO ROUND DINING TABLE ASSEMBLY INSTRUCTIONS FOR DINING TABLE INSTALLATION

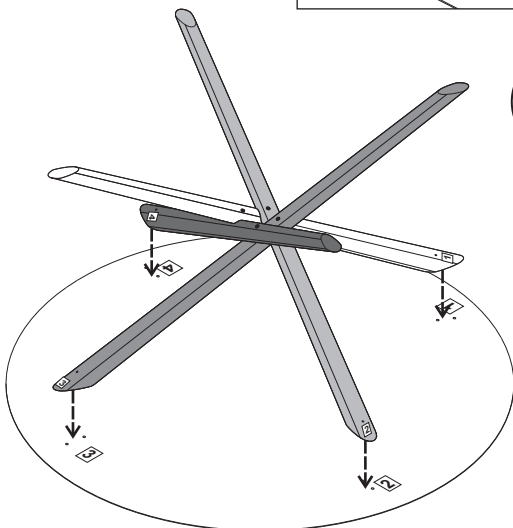
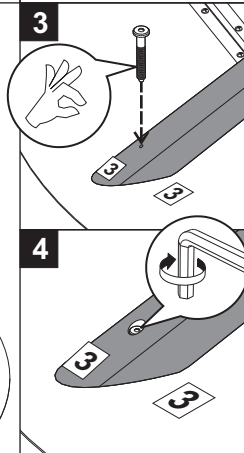
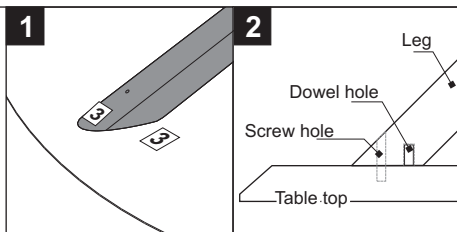
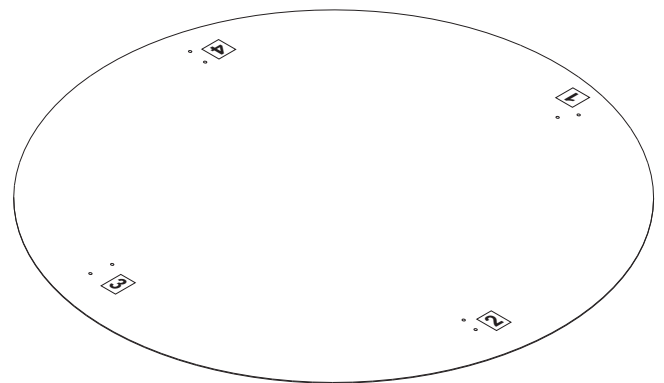
B. INSTALLING THE LEGS TO THE TOP PANEL



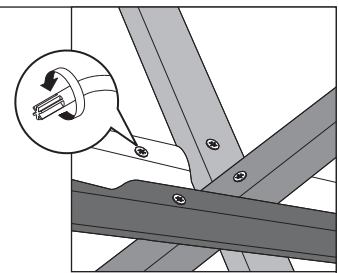
- ! - USE SPAX SCREW (4X)
- DO NOT FULLY TIGHTEN



- ! USE DOWEL (4X)



- ! - USE JCBC SCREW (4X)
- TIGHTEN FULLY
- MAKE SURE THE NUMBERING AT THE LEGS AS WELL ON THE TABLE TOP IS CORRECT.



- ! TIGHTEN FULLY ALL SCREWS

