

# Audo



*Textile*

The Audo Upholstery Program is an overview of the textile and leathers available for Audo upholstered furniture. All textile and leather options are available in all colors. You'll find over 100 fabric and leather options, with the most popular configurations available with expedited delivery in our Quick Ship program. Custom upholstery orders from our Audo Upholstery Program (SPEC) are ready to ship with standard delivery lead times. Our Fixed Combinations listed in this Brand Book are suggested upholsteries selected by our design team, and deliver with standard lead times.

We are happy to upholster furniture using customer's own materials (COM) with extended delivery lead times, upon fabric approval. COM products are to be calculated by PC1T if in textile and PC1L if in leather, excluding the price of the fabric.

Please note that the color references in this upholstery programme are only intended as a guide. For further information please see manufacturer websites, or contact your local Audo Sales Representative for samples or further information.

KVADRAT.DK  
SAHCO.COM  
NEVOTEX.COM  
JAB.DE  
DANISHARTWEAVING.COM  
DEDAR.COM



Use table to determine the upholstery options available for fabric-covered items.

	AFTERROOM	BRASILIA	CAIRN	CO CHAIR	CONSTANCE CHAIR	CONSTANCE SOFA	EAVE COLLECTION	HARBOUR CHAIR	HARBOUR LOUNGE CHAIR	INGEBORG	KNITTING CHAIR	MERKUR	MINGLE	MY OWN CHAIR	OFFSET	READY	TEAROOM CHAIR	TEAROOM SOFA	THE TIRED MAN	VILHELM	THE PENGUIN	ELIZABETH	ODA	PAGODE	RADIOHUS	THE SEAL	
<b>PRICE CATEGORY 1</b>																											
BARNUM BOUCLÉ, AUDIO	●	●	●	●	○	○	●	●	○	○	○	●	○	○	●	●	●	●	●	○	○	○		○	○	○	
CHAMPION, JAB	●	●	●	●	○	○	●	●		○	●	○	○	○	●	○	●	●	○	○	○	○		○	○	○	
HOT MADISON FR, JAB	○	○	○	○	○	○	○	○	○	○		○	○	○	○	○	○	○	○	○	○	○		○	○	○	
ILLUSION, NEVOTEX	○	○	○	○	○	○	○	○		○	●	○	○	○	○	○	○	○	○	○	○	○				○	○
MAPLE, KVADRAT	●	●	●	●	○	○	●	●		○	●	○	○	○	●	○	●	●	○	○							
REMIX, KVADRAT	●	●	●	●	○	○	●	●	●	○	●	○	○	●	●	●	●	●	○	○	●	●		●	●	●	
RE-WOOL, KVADRAT	●	○	●	●	○	○	●	●	●	○	○	○	○	○	●	●	●	○	○	○	●	●		●	●	●	
<b>PRICE CATEGORY 2</b>																											
CANVAS 2, KVADRAT	●	●	●	●	○	○	●	●	●	○	●	○	○	○	●	●	●	●	○	○	○	○		○	○	○	
CLAY, SAHCO, KVADRAT	●	●	○	●	○	○	●	●	○	○	○	○	○	○	●	○	●	●	○	○	○	○		○	○	○	
COLLINE, KVADRAT	●	●	○	●	○	○	●	●	●	●	●	○	●	●	●	●	●	●	○	●	○	○		○	○	○	
FIORD, KVADRAT	●	●	●	●	○	○	●	●	●	●	●	○	○	●	●	●	●	●	○	●	●	●		●	●	●	
HALLINGDAL 65, KVADRAT	●	●	●	●	●	●	●	●	●	●	●	●	●	●	●	●	●	●	●	●	●	●	●	●	●	●	
MOSS, SAHCO, KVADRAT	●	●	●	●	○	○	●	●	●	○	●	○	○	○	●	●	●	●	●	●	●	●	○	○	○	○	
STEELCUT, KVADRAT	●	○	●	●	○	○	●	●	●	○	○	○	○	○	●	○	●	○	○	○	○	●	●		○	○	●
STEELCUT TRIO 3, KVADRAT	●	○	●	●	○	○	●	●	●	○	●	○	○	○	●	○	●	●	○	●	●	●		○	○	●	
<b>PRICE CATEGORY 3</b>																											
SAFIRE, SAHCO, KVADRAT	●	●	●	●	○	○	●	●	●	○	●	○	○	●	○	○	●	●	○	○	●	○	○	○	●	●	○
VIDAR 4, KVADRAT	●	●	●	●	○	○	●	●	●	●	○	○	●	●	●	○	●	●	○	●	●	○	○	○	○	○	
<b>PRICE CATEGORY 4</b>																											
GRAND MOHAIR, DANISH ART WEAVING	○	○	●	●	●	●	●	○	●	●	○	○	●	○		○	○	●	○	●	○	○		○	○	○	
LUPO, DEDAR	●	○	○	●	○	○	●	●	○	○	○	○	○	○	●	○	●	○	○	○	○	○	○	○	○	○	

- TESTED AND APPROVED.
- NOT TESTED YET, BUT POSSIBLE TO TEST

*Textile Category 1*

BARNUM BOUCLE  
*by Audo*



---

PRICE CATEGORY  
1

---

MANUFACTURER  
Audo

---

MATERIALS  
45% Cotton  
19% Viscose  
15% Wool  
13% PC  
8% Polyester

---

MARTINDALE  
60,000

---

LIGHTFASTNESS  
5

---

PILLING  
4



04



05



10



11



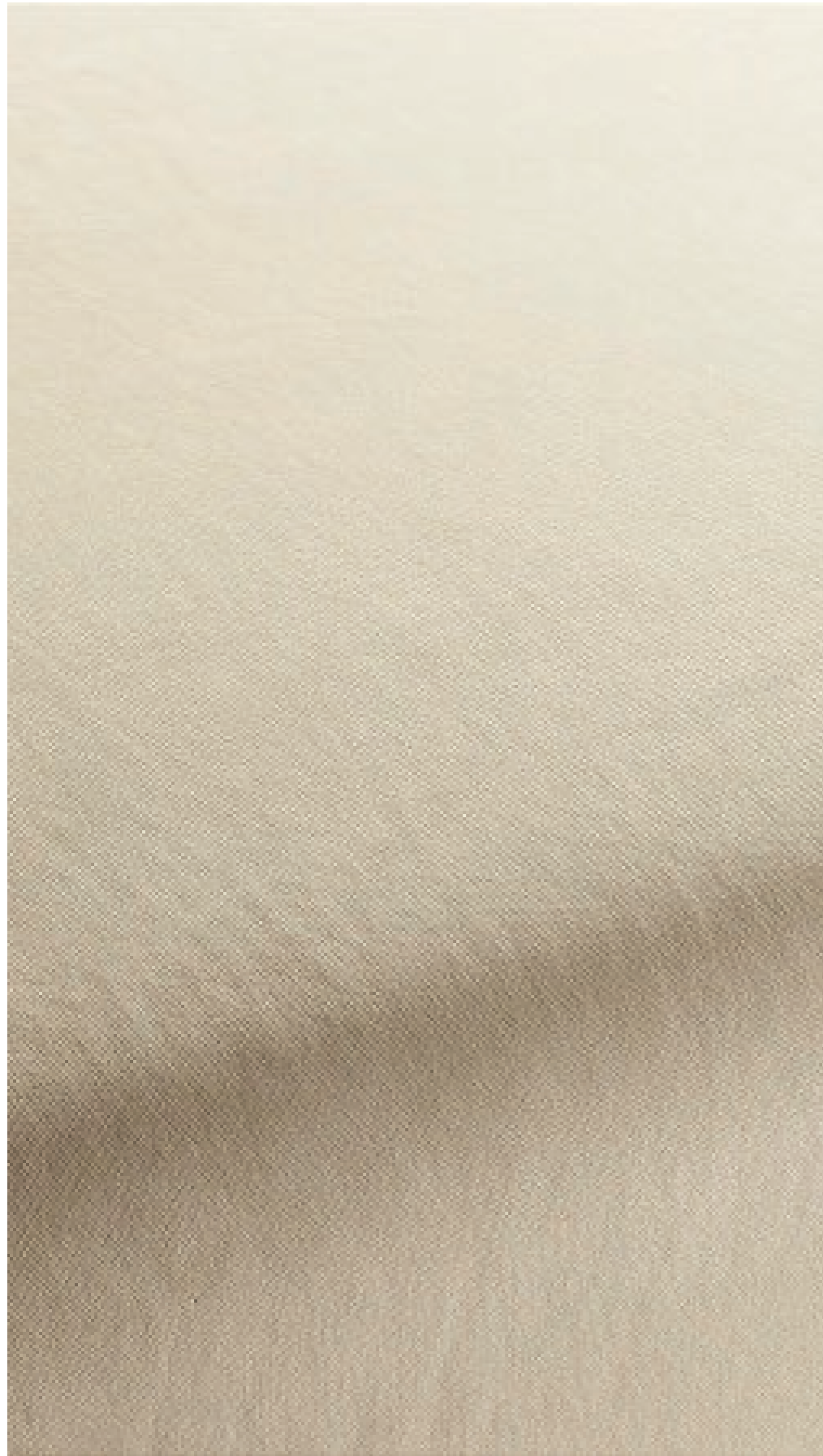
19



21



24



PRICE CATEGORY  
1

MANUFACTURER  
JAB

MATERIALS  
100% Polyester

MARTINDALE  
70.000

LIGHTFASTNESS  
5



1-3114-010



1-3114-011



1-3114-012



1-3114-020



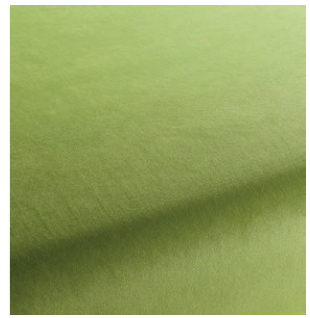
1-3114-021



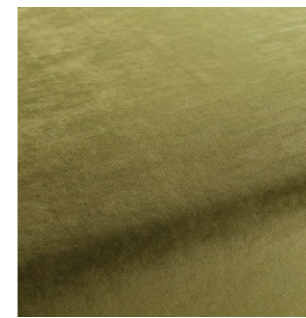
1-3114-022



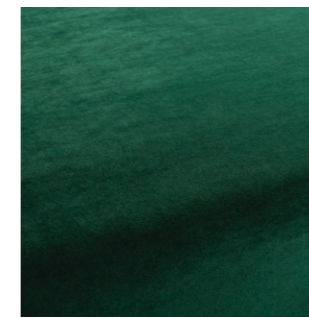
1-3114-030



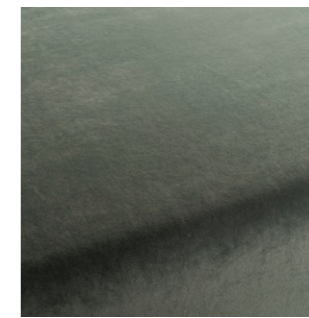
1-3114-031



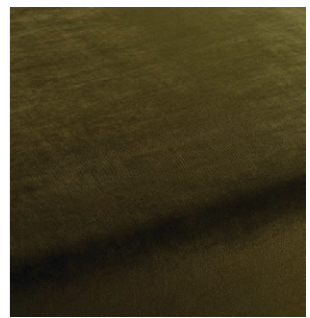
1-3114-032



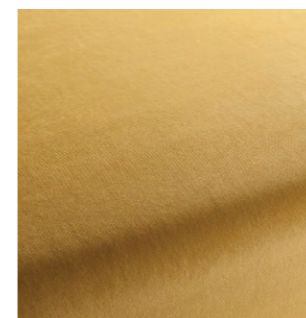
1-3114-033



1-3114-034



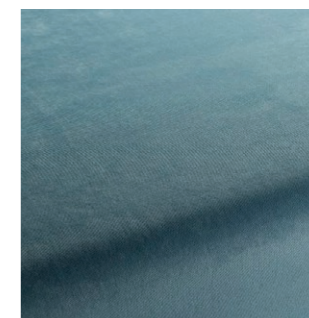
1-3114-035



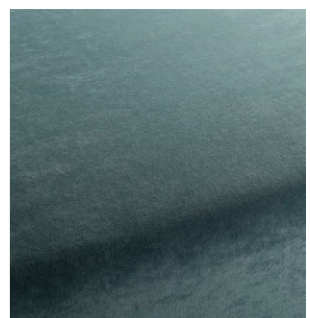
1-3114-040



1-3114-041



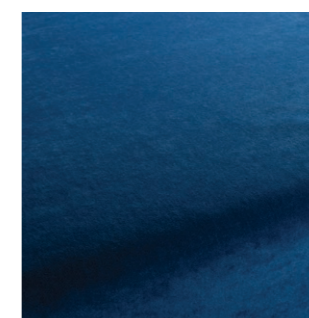
1-3114-050



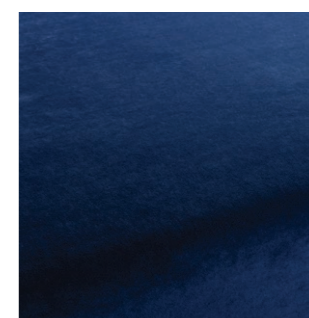
1-3114-051



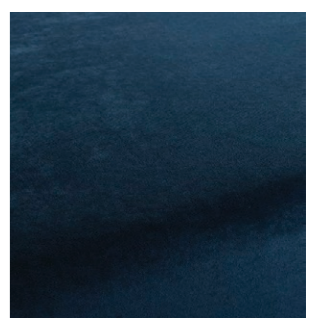
1-3114-052



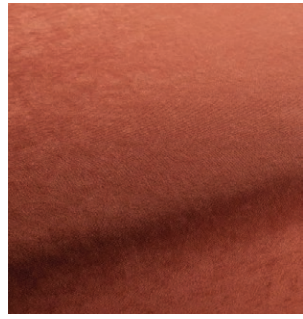
1-3114-053



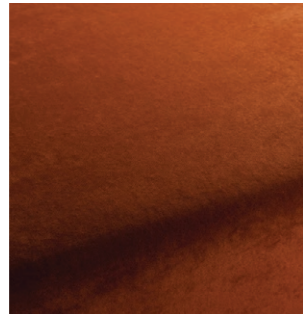
1-3114-054



1-3114-055



1-3114-060



1-3114-061



1-3114-062



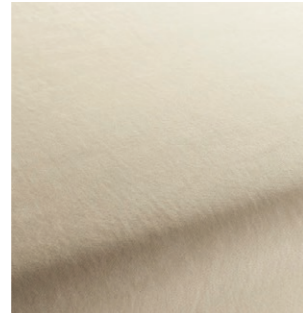
1-3114-063



1-3114-064



1-3114-070



1-3114-071



1-3114-072



1-3114-073



1-3114-074



1-3114-075



1-3114-080



1-3114-081



1-3114-082



1-3114-091



1-3114-092



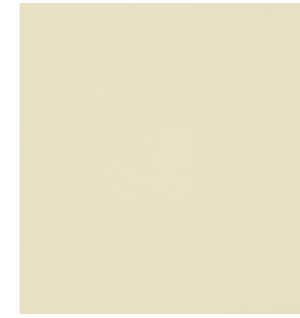


PRICE CATEGORY  
1

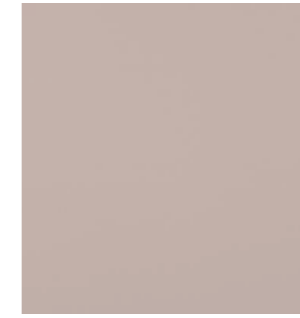
MANUFACTURER  
Nevotex

MATERIALS  
Artificial leather

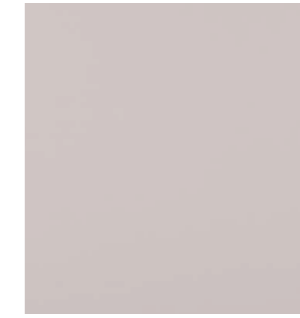
THICKNESS  
1 mm



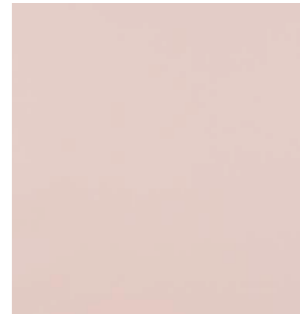
82417



93086



53593



22427



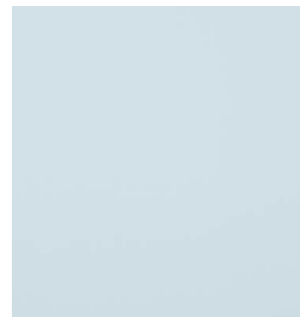
65072



72133



63174



61602



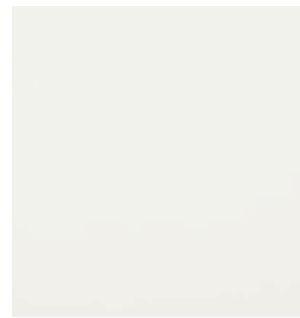
65307



74007



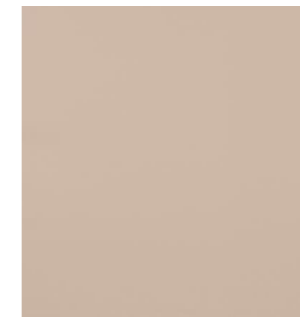
76236



00800



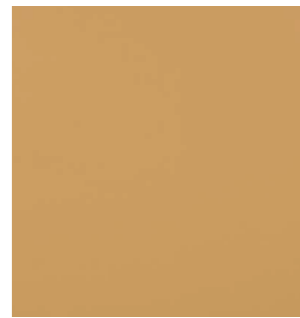
84176



85352



87241



36519



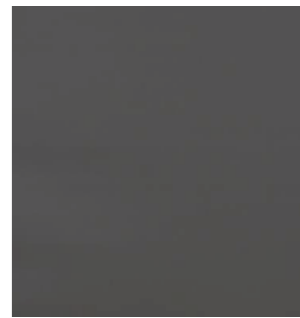
44184



24784



45633

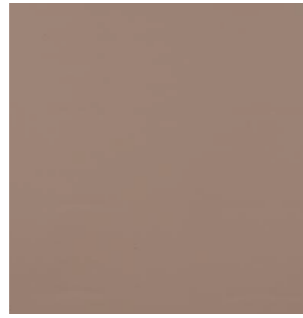


57841

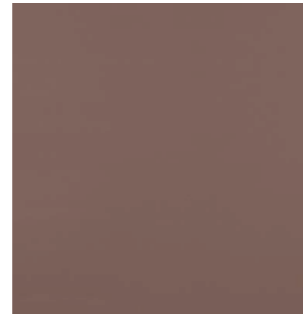




48013



46508



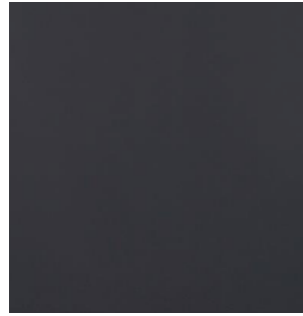
47124



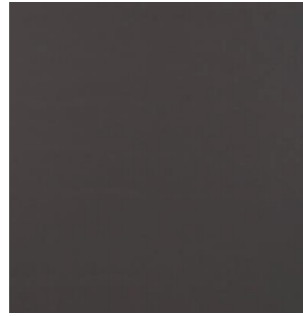
67403



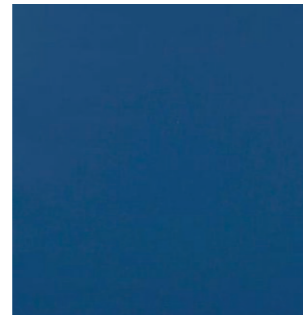
47069



68523



58290



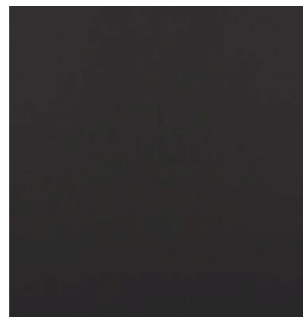
68746



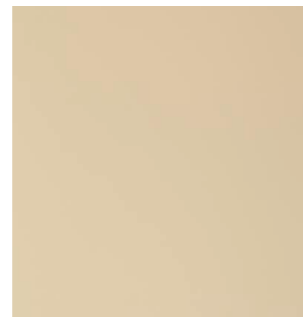
65066



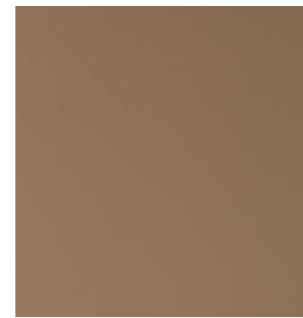
67382



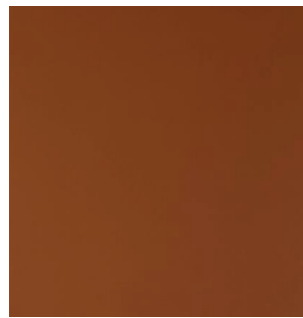
00110



83430



85020



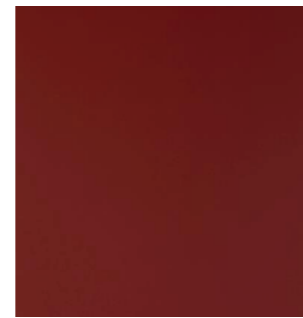
44388



36850



23660



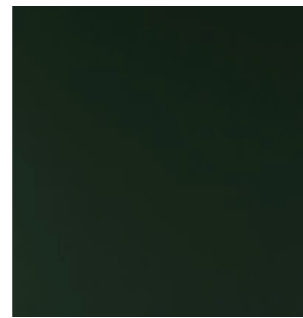
28040



75566



76725

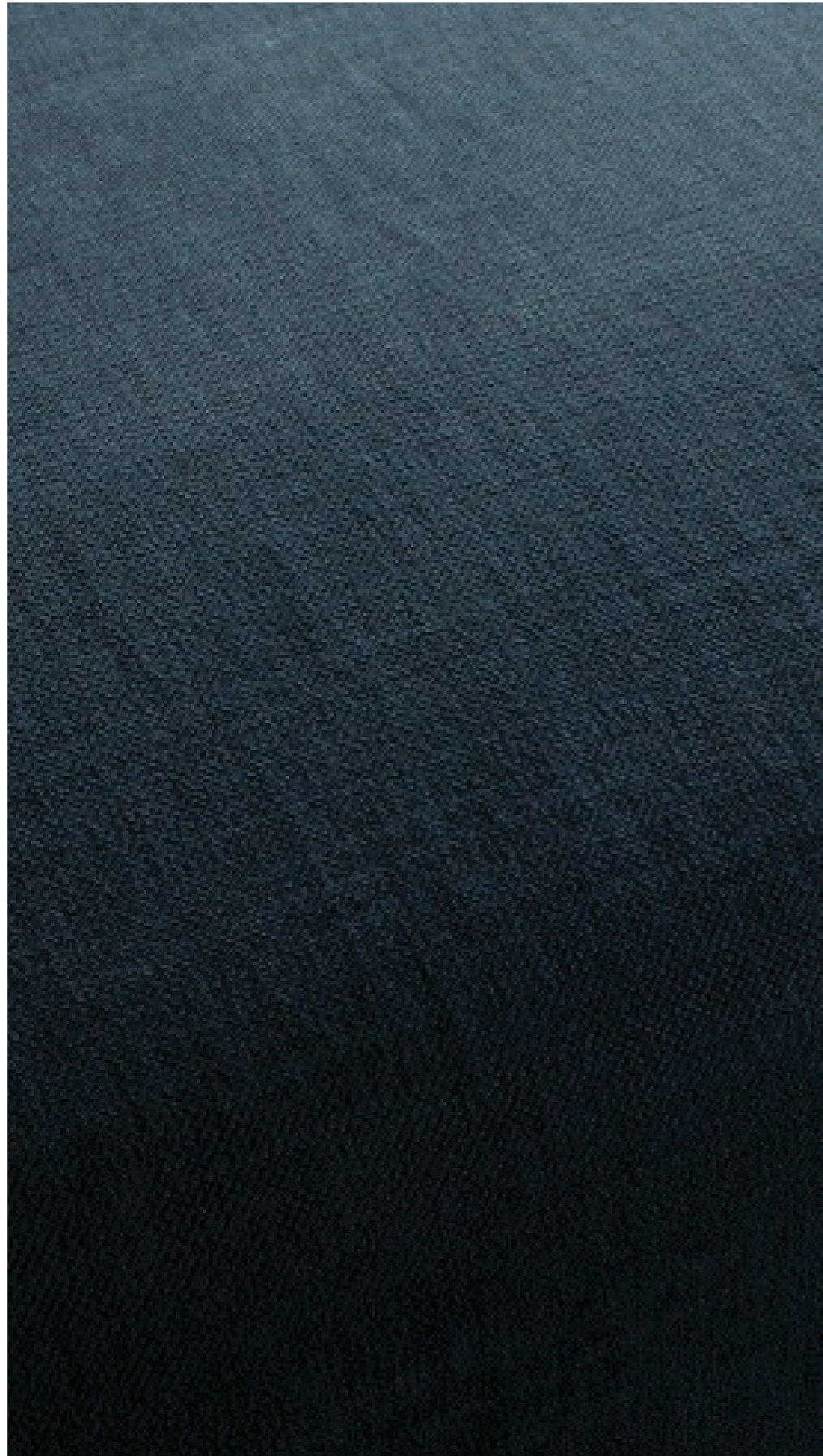


77773



66745

HOT MADISON FR  
by JAB



PRICE CATEGORY  
1

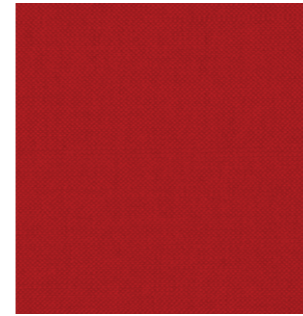
MANUFACTURER  
JAB

MATERIALS  
63% Cotton  
37% Linen

MARTINDALE  
35.000

LIGHTFASTNESS  
4-5

PILLING  
4



CH3099-013



CH3099-020



CH3099-023



CH3099-053



CH3099-070



CH3099-072



CH3099-073



CH3099-074



CH3099-077



CH3099-089



CH3099-093



CH3099-094



CH3099-095



CH3099-097



CH3099-130



CH3099-133



CH3099-155



CH3099-171



CH3099-172



CH3099-180



CH3099-185



CH3099-192



CH3099-194



CH3099-195



CH3099-714



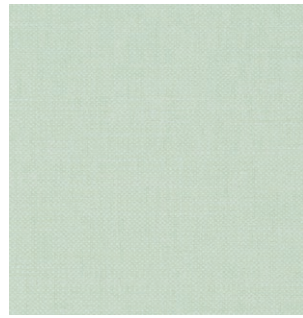
CH3099-716



CH3099-720



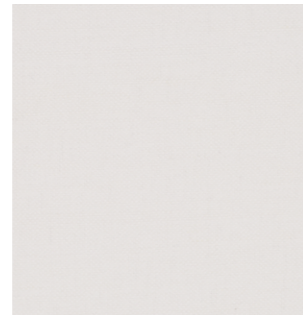
CH3099-722



CH3099-203



CH3099-419



CH3099-420



CH3099-424



CH3099-724



CH3099-726



CH3099-727



CH3099-884



CH3099-478



CH3099-499



CH3099-503



CH3099-521



CH3099-903



CH3099-934



CH3099-936



CH3099-988



CH3099-562



563-097



CH3099-565



CH3099-567



CH3099-995



CH3099-568



CH3099-569



CH3099-695



CH3099-706



PRICE CATEGORY  
1

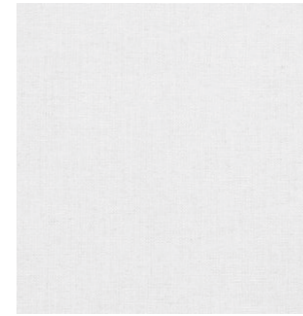
MANUFACTURER  
Kvadrat

MATERIALS  
81% Viscose  
15% Linen  
4% Non-woven Polyester  
backing

MARTINDALE  
30.000

LIGHTFASTNESS  
5-7

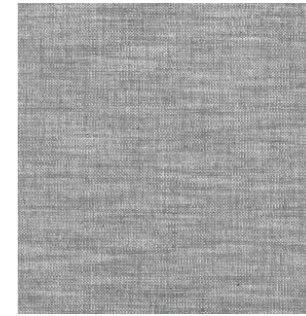
PILLING  
5



0102



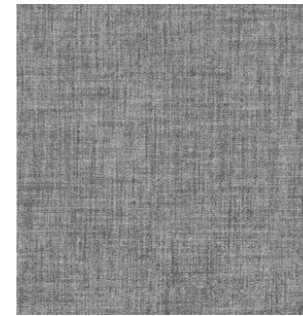
0112



0132



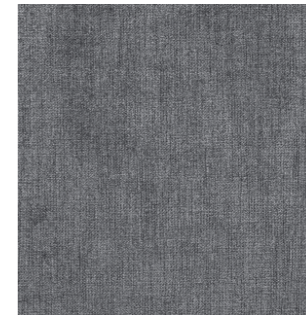
0142



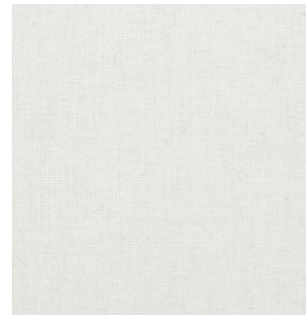
0162



0172



0192



0202



0212



0222



0232



0332



0342



0352



0362



0392



0542



0562



0662



0722



0732



0742



0762



0792



0832



0862



PRICE CATEGORY  
1

MANUFACTURER  
Kvadrat

MATERIALS  
90% New wool  
10% Nylon

MARTINDALE  
100.000

LIGHTFASTNESS  
5-7

PILLING  
4



0113



0123



0126



0133



0136



0143



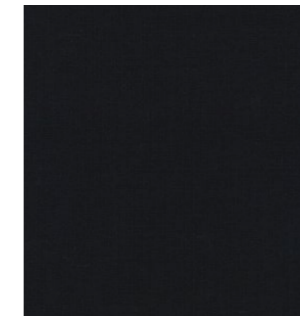
0152



0173



0183



0196



0223



0233



0242



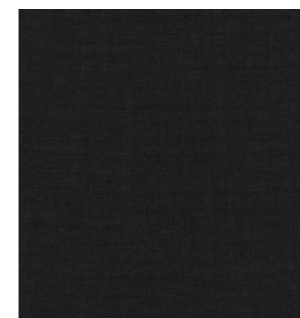
0252



276



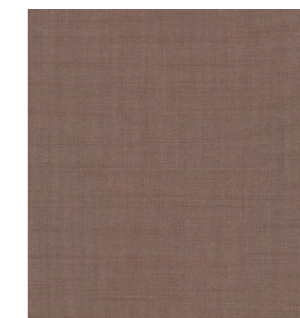
0266



0276



0296



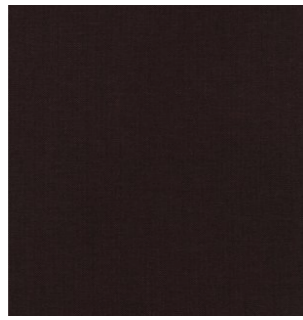
0326



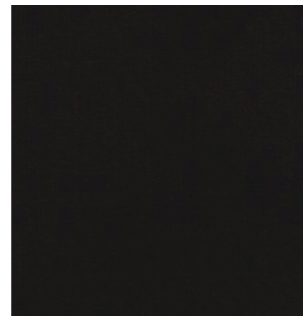
0346



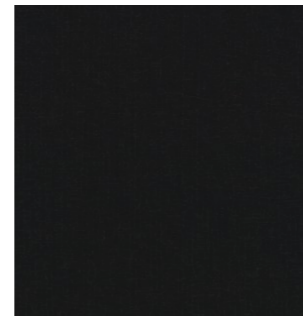
0356



0362



0373



0383



0672



0682



0686



0692



0406



0412



0422



0433



0716



0722



0733



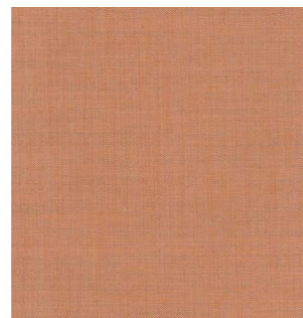
0743



0443



0452



0516



0536



0753



0762



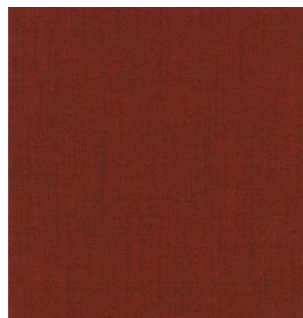
0773



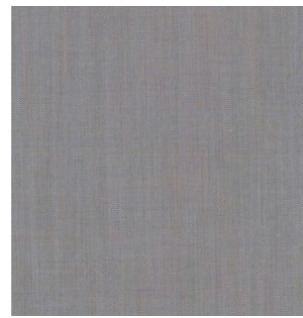
0783



0543



0566



0606



0612



0796



0816



0823



0836



0632



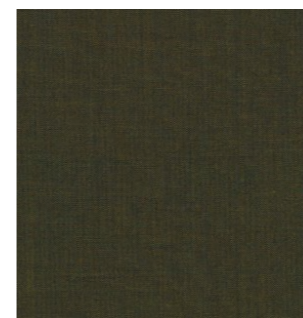
0643



0653



0662



0842



0852



0866



0873



0906



0912



0923



0933



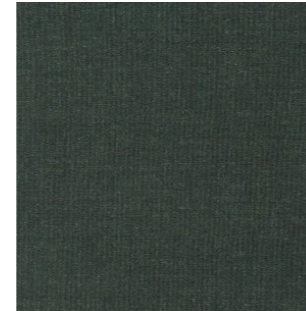
0942



0954



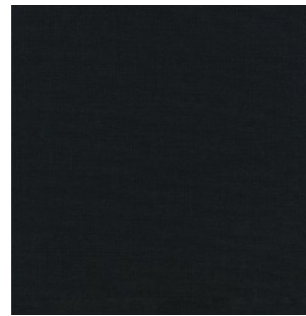
0962



0973



0982



0996





PRICE CATEGORY  
1

MANUFACTURER  
Kvadrat

MATERIALS  
45% new wool worsted  
45% recycled wool  
10% nylon

MARTINDALE  
100.000

LIGHTFASTNESS  
5-7 (ISO 1-8)

PILLING  
4 (ISO 1-5)



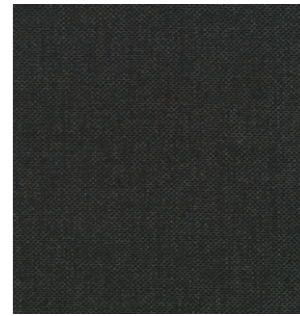
0108



0128



0158



0198



0218



0358



0378



0408



0448



0458



0558



0568



0628



0648



0658



0718



0758



0768



0828



0858



0868

## *Textile Category 2*



PRICE CATEGORY  
2

MANUFACTURER  
Kvadrat

MATERIALS  
90% New wool  
10% Nylon

MARTINDALE  
100.000

LIGHTFASTNESS  
5-7

PILLING  
4-5



114



124



134



154



174



216



224



244



254



264



356



364



374



414



424



446



454



546



556



566



576



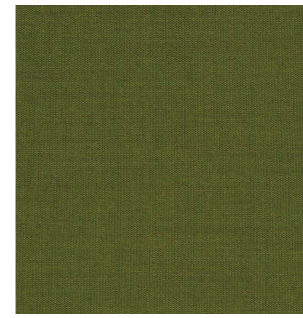
614



644



654



954



964



974



984



666



674



684



694



996



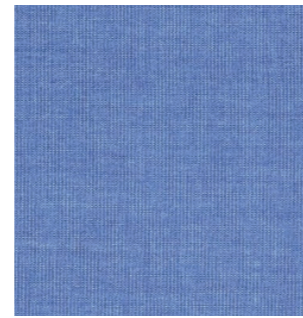
716



726



734



746



764



786



794



836



854



926



936



946



PRICE CATEGORY  
2

MANUFACTURER  
Sahco

MATERIALS  
76% Linen  
21% Cotton  
3% Polyester

MARTINDALE  
45.000

LIGHTFASTNESS  
4-6

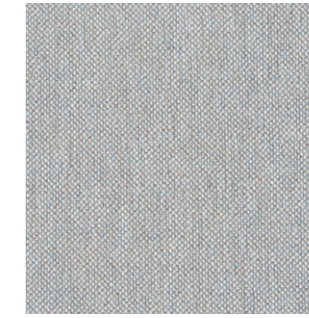
PILLING  
4



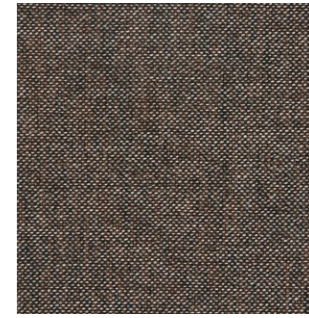
0001



0002



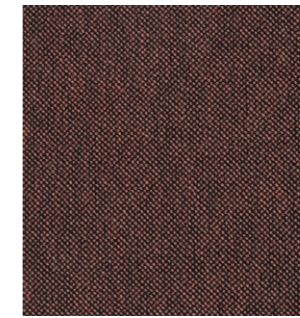
0003



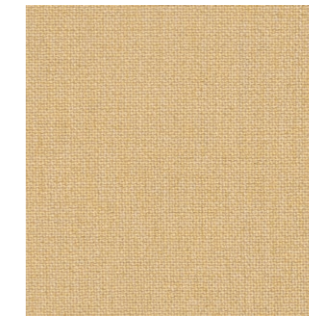
0004



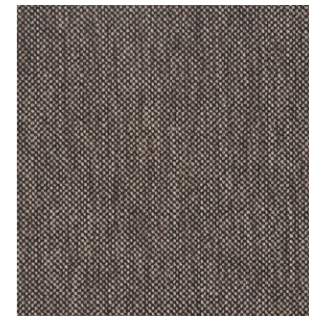
0005



0006



0007



0008



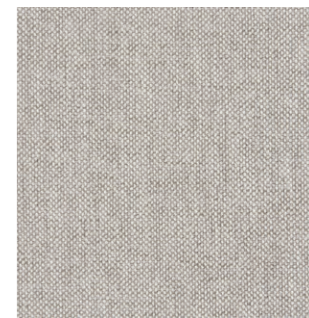
0009



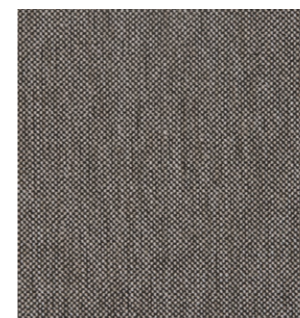
0010



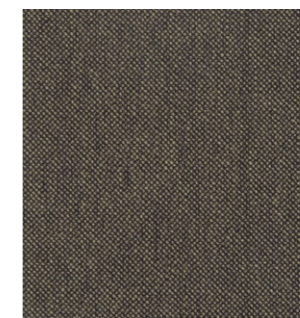
0011



0012



0013



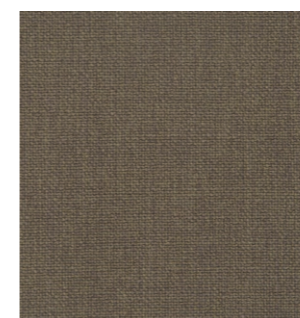
0014



0015



0016



0017




---

PRICE CATEGORY  
2

---

MANUFACTURER  
Kvadrat

---

MATERIALS  
75% Wool  
17% Acrylic  
8% Nylon

---

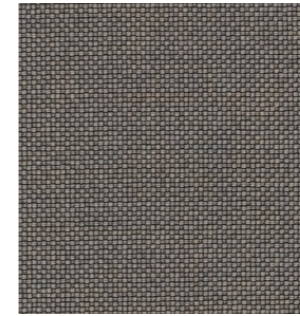
MARTINDALE  
100.000

---

LIGHTFASTNESS  
6

---

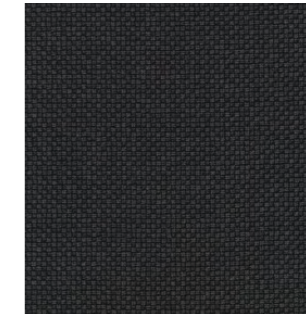
PILLING  
4-5



0127



0147



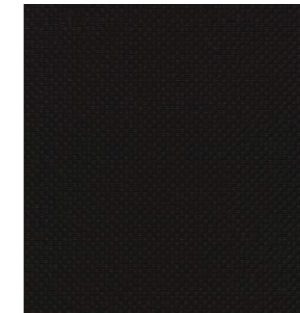
0177



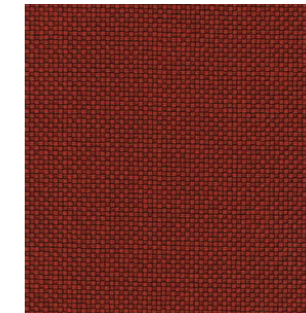
0227



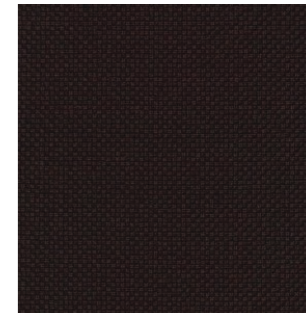
0347



0397



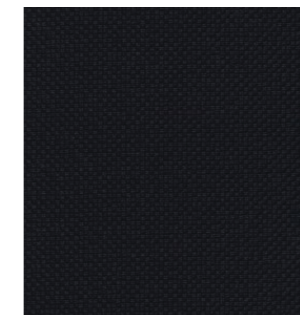
0657



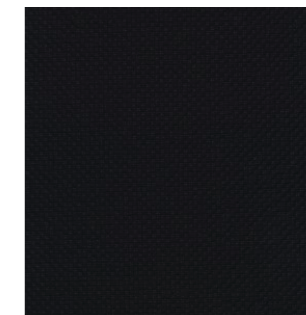
0677



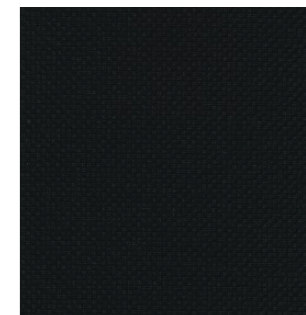
0737



0787



0797



0987



PRICE CATEGORY  
2

MANUFACTURER  
Kvadrat

MATERIALS  
92% New wool  
8% Nylon

MARTINDALE  
60.000

LIGHTFASTNESS  
6

PILLING  
4-5



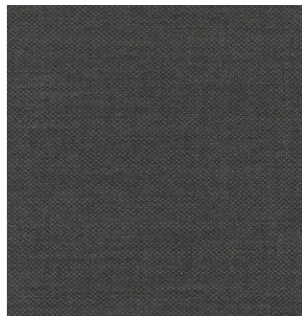
101



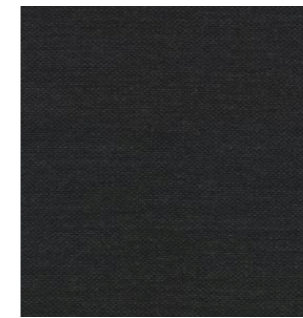
121



151



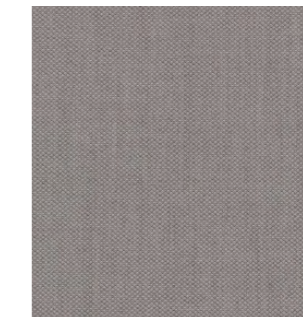
171



191



201



251



262



271



322



351



371



382



391



422



442



451



521



551

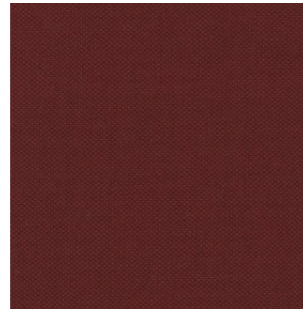


562





571



581



591



642



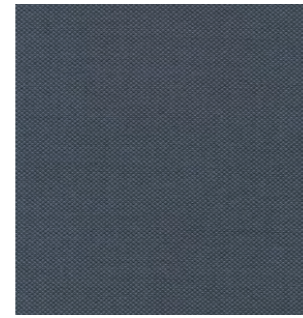
672



721



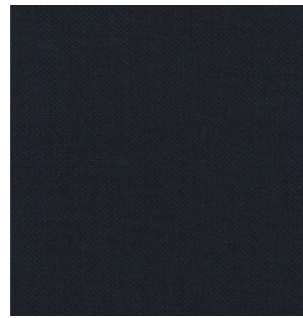
751



762



771



782



791



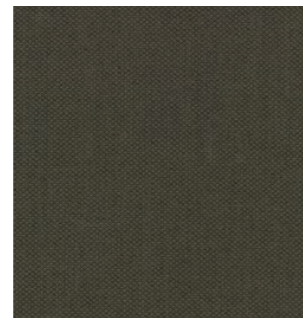
821



862



951



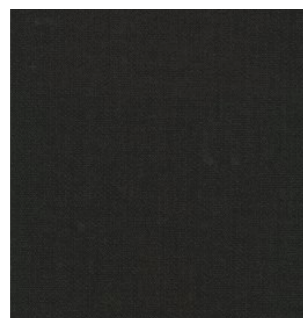
961



971

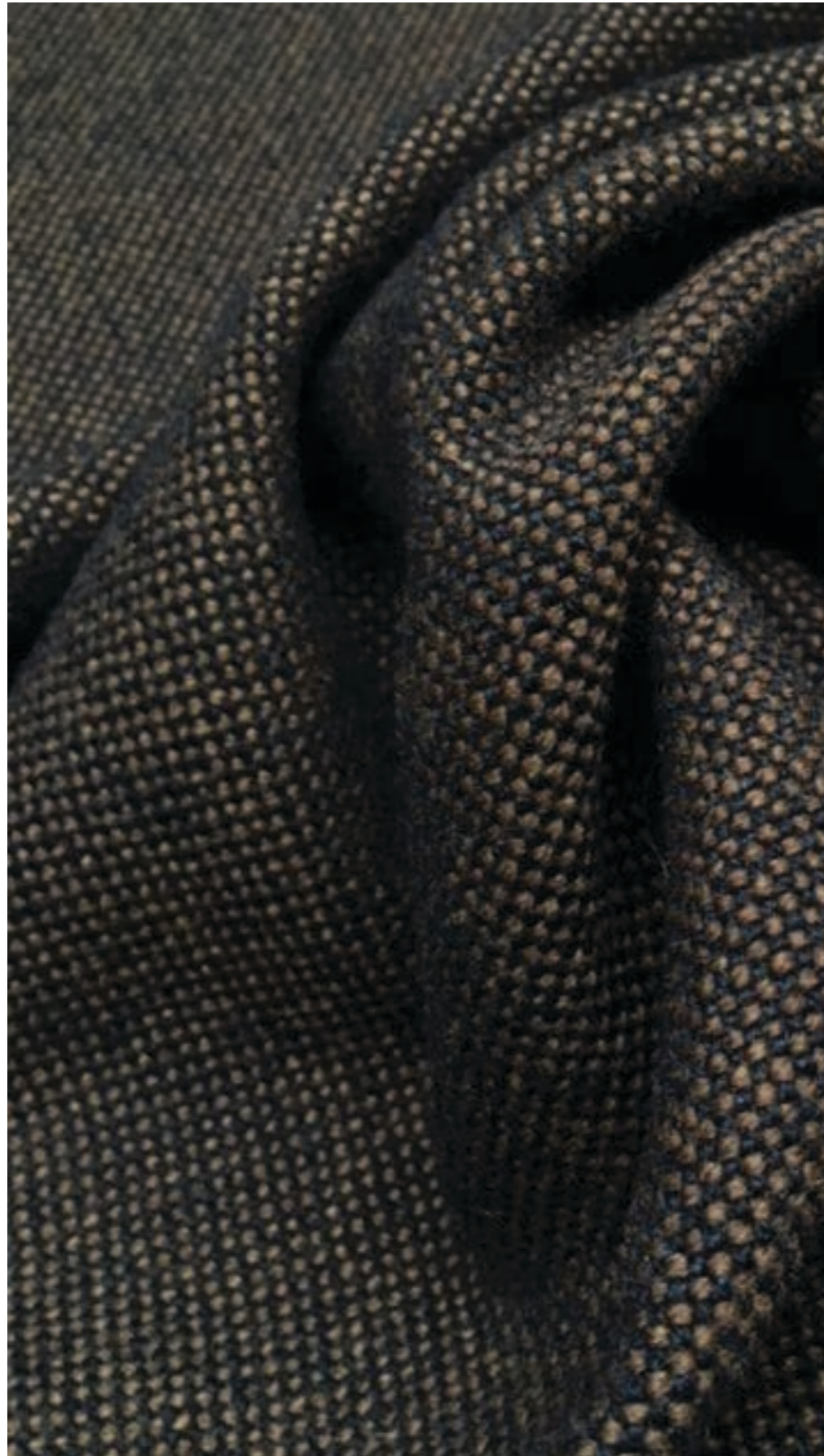


981



991

HALLINGDAL 65  
by Kvadrat



PRICE CATEGORY  
2

MANUFACTURER  
Kvadrat

MATERIALS  
70% New wool  
30% Viscose

MARTINDALE  
100.000

LIGHTFASTNESS  
5-7

PILLING  
3-4



0100



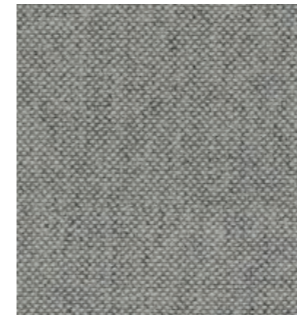
0103



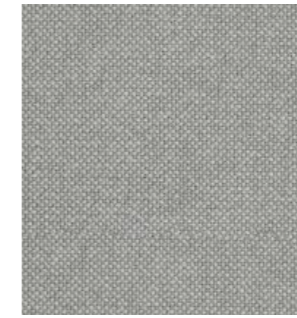
0110



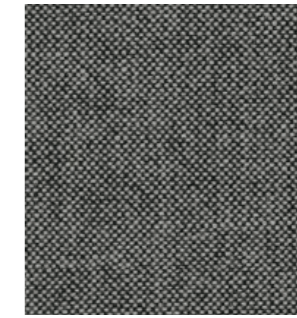
0113



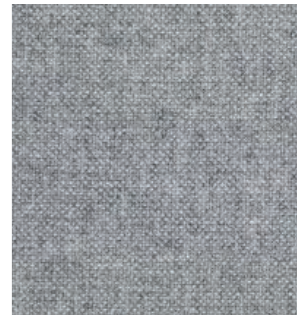
0116



0123



0126



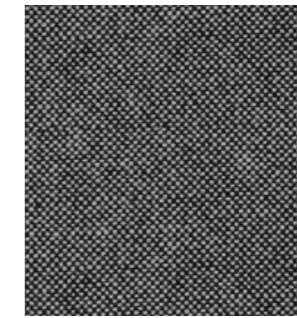
0130



0143



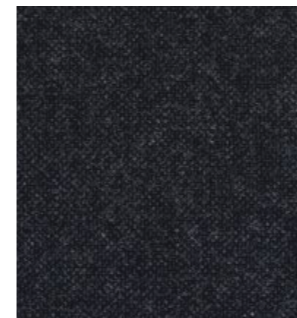
0153



0166



0173



0180



0190



0200



0220



0224



0227



0270



0350



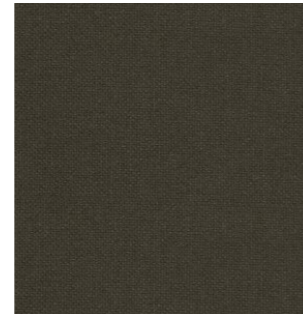
0368



0370



0376



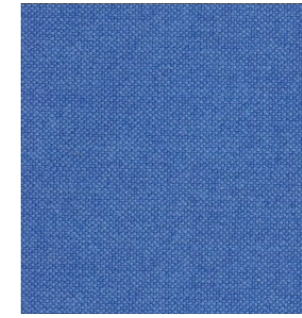
0390



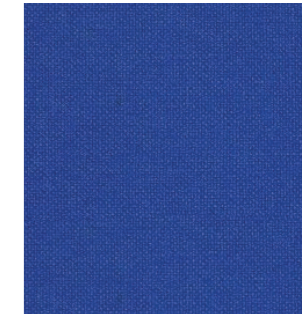
0702



0723



0733



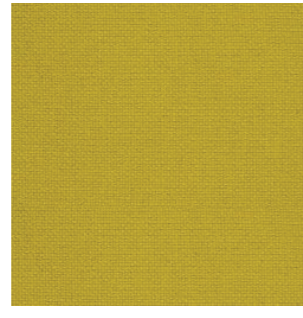
0750



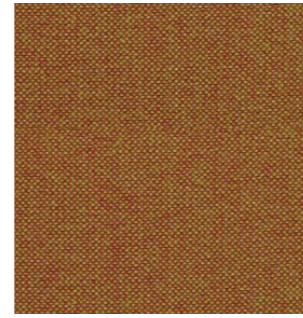
0407



0420



0457



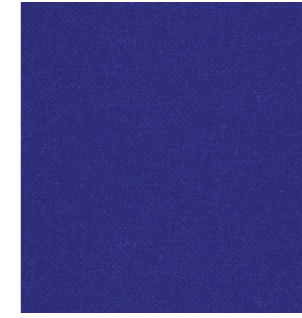
0526



0753



0754



0763



0764



0547



0563



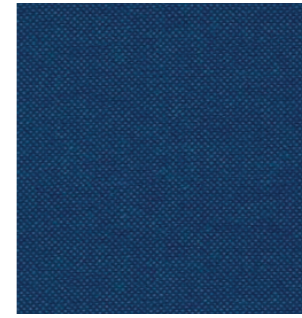
0573



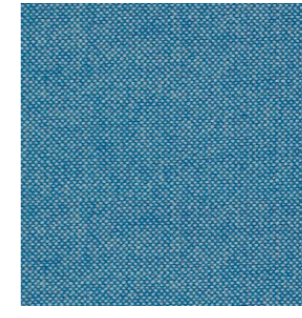
0590



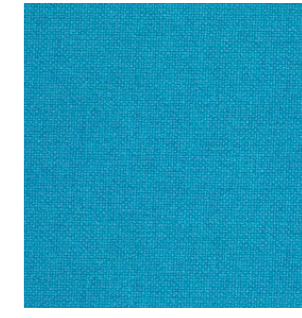
0773



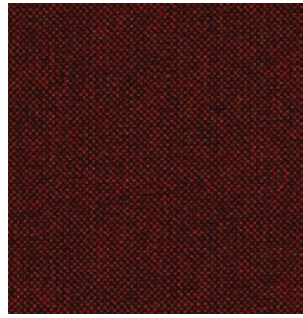
0810



0840



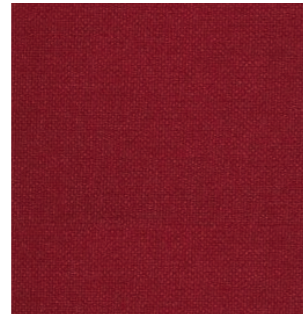
0850



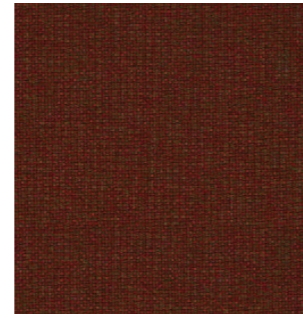
0596



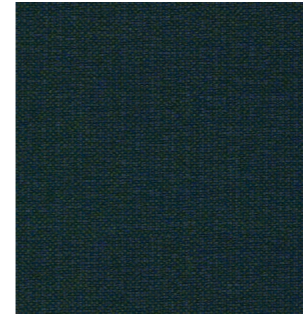
0600



0657



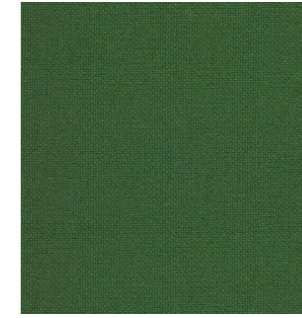
0660



0890



0907



0944



0960



0674



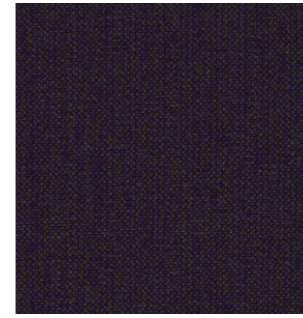
0680



0687



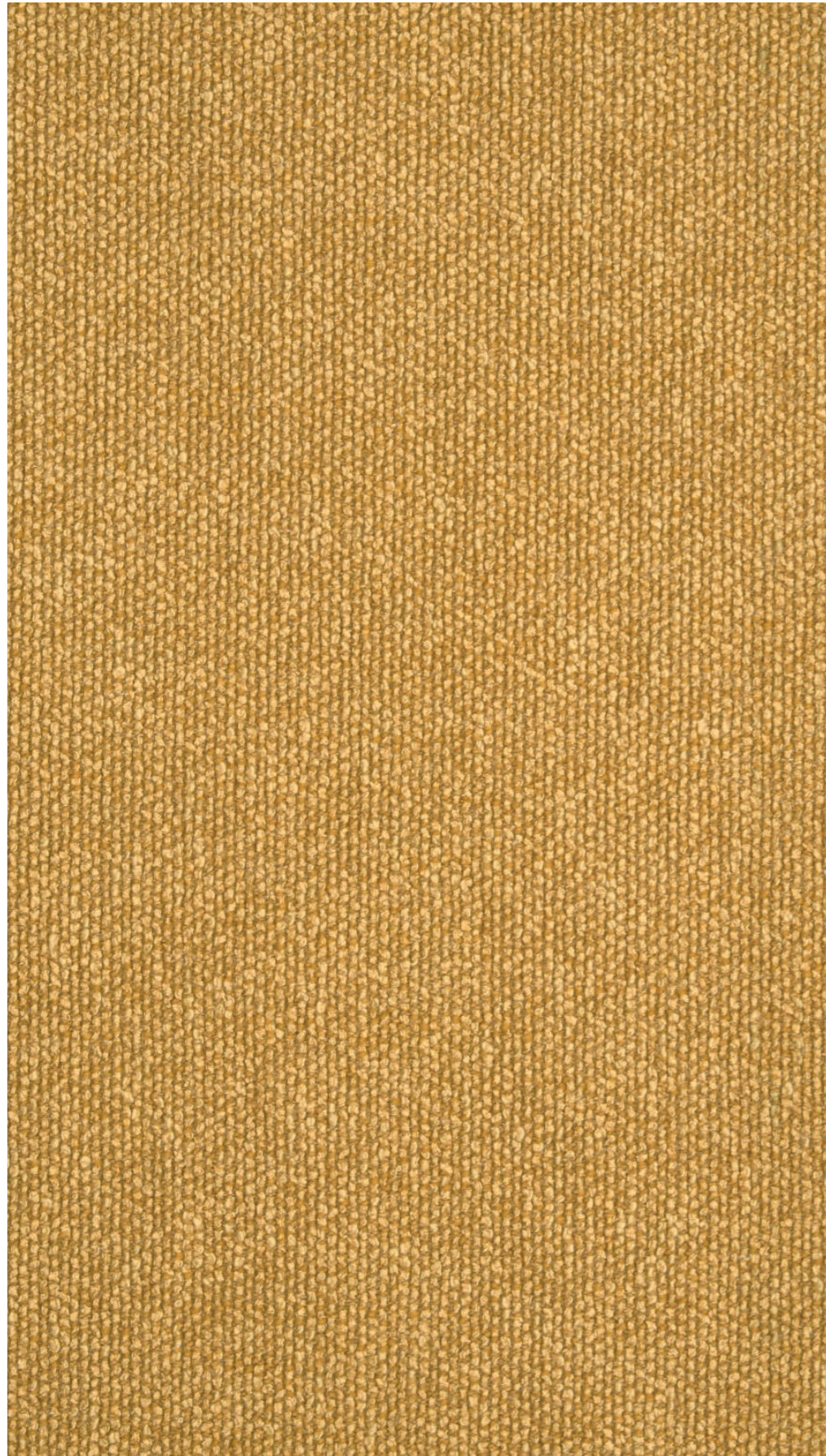
0694



0968



0980



PRICE CATEGORY  
2

MANUFACTURER  
Sahco

MATERIALS  
52% Cotton  
22% Viscose,  
14% Acrylic  
6% Linen  
3% Polyester  
3% Nylon

MARTINDALE  
45.000

LIGHTFASTNESS  
6-7

PILLING  
4-5



0001



0002



0003



0004



0005



0006



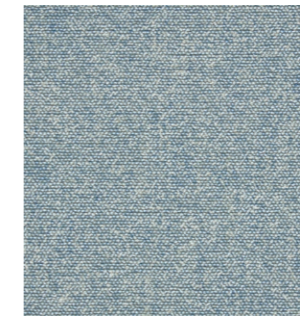
0007



0008



0009



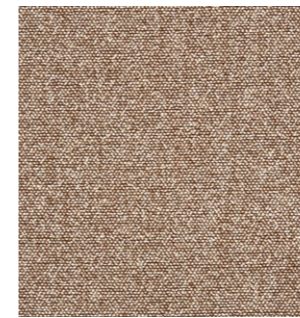
0010



0011



0012



0013



0014



0015



0016



0017



0018



0019



0020

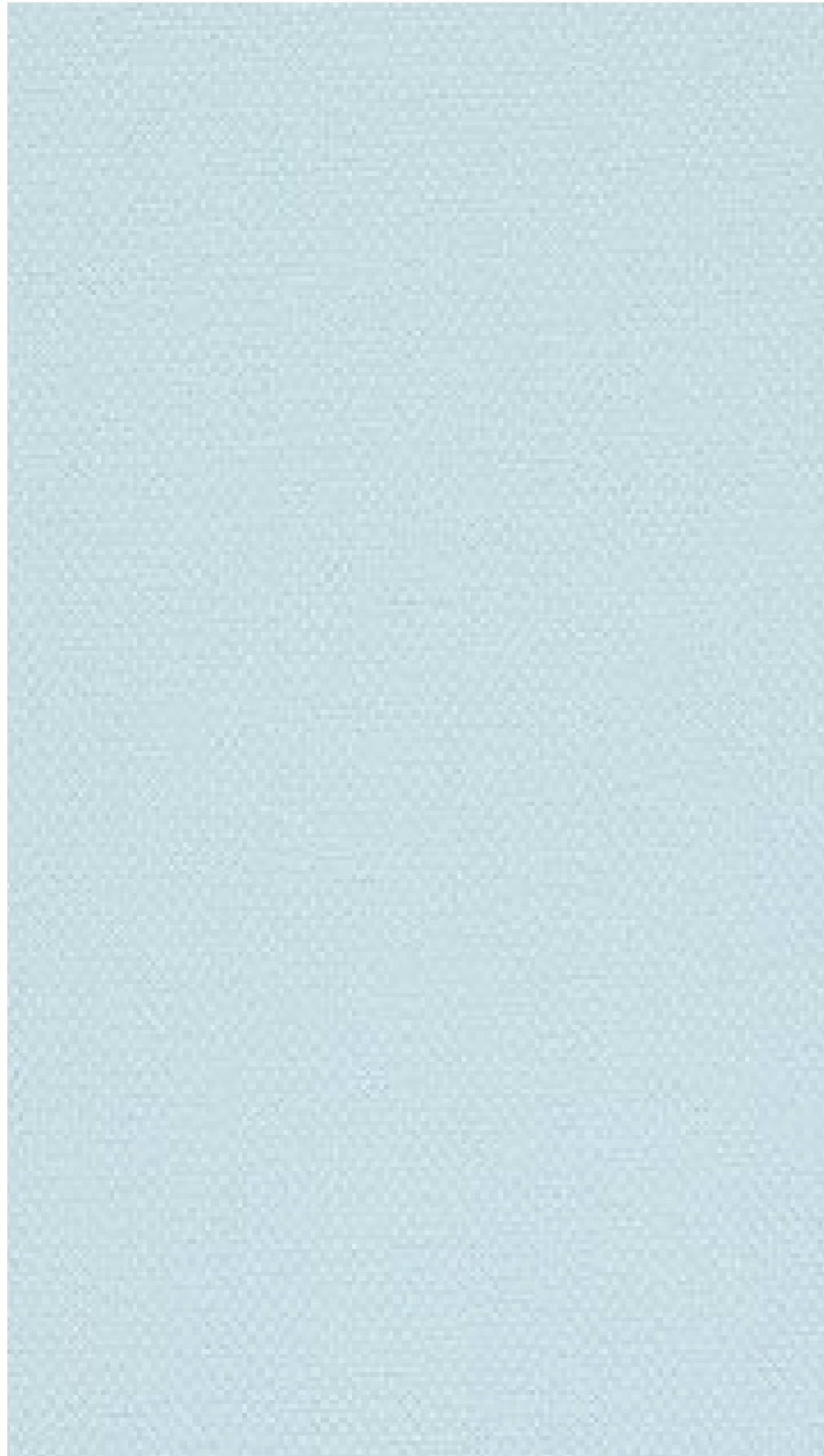


0021



0022

STEELCUT 2  
by Kvadrat



PRICE CATEGORY  
2

MANUFACTURER  
Kvadrat

MATERIALS  
90% New wool  
10% Nylon

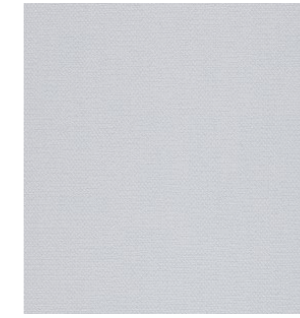
MARTINDALE  
100.000

LIGHTFASTNESS  
5-7

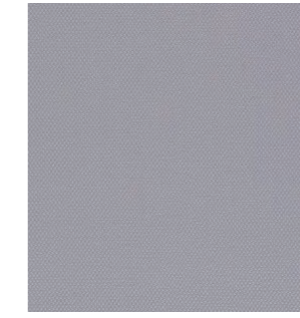
PILLING  
3-4



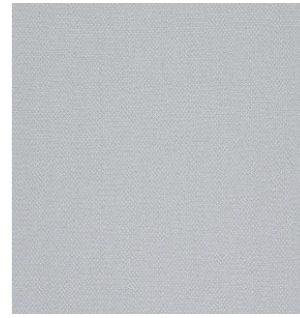
110



120



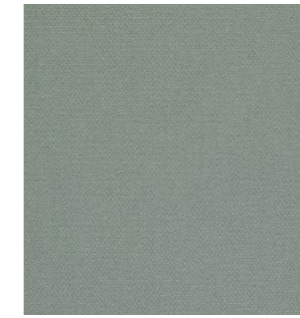
135



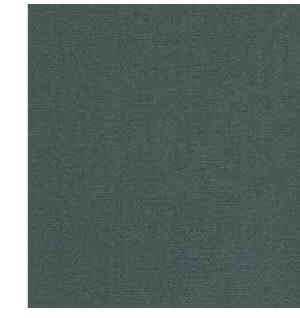
140



155



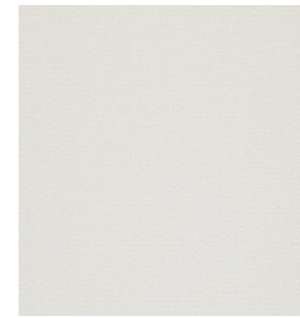
160



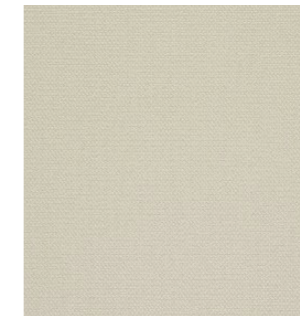
180



190



220



240



255



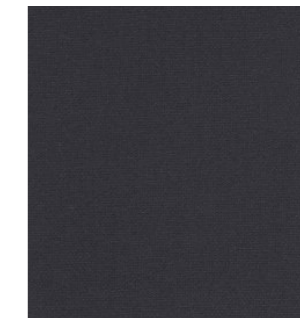
265



365



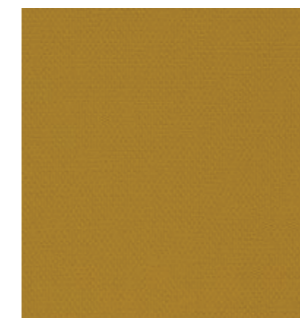
370



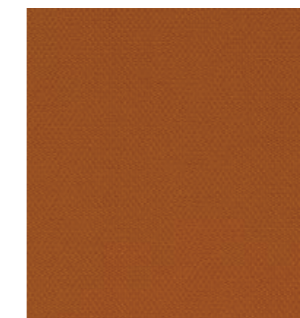
380



435



445



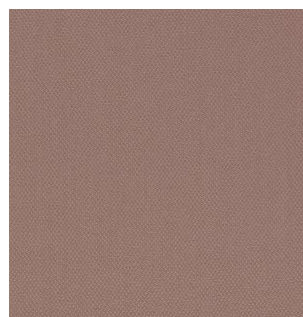
535



545



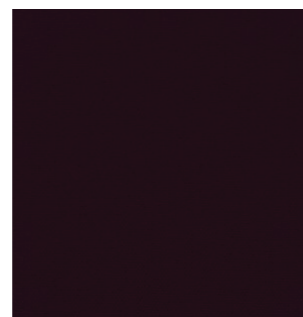
550



605



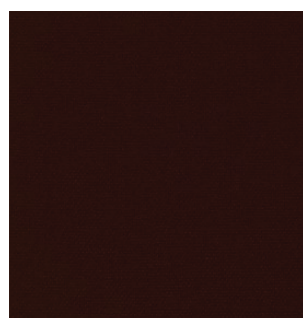
615



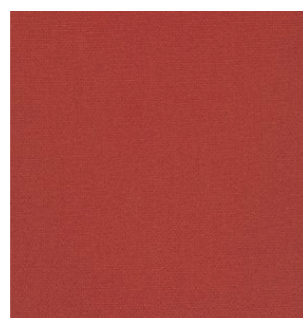
625



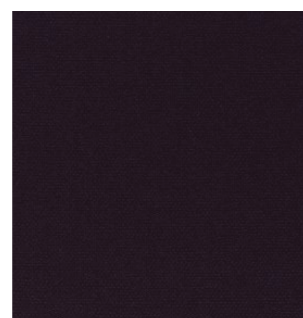
635



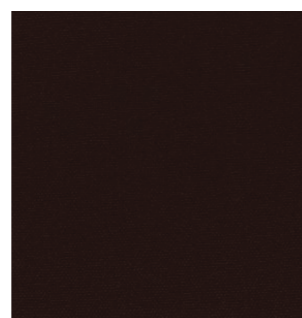
655



660



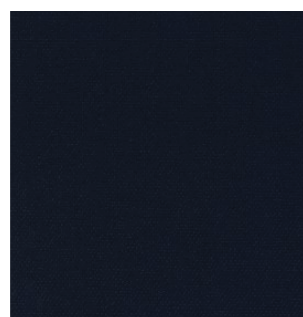
685



695



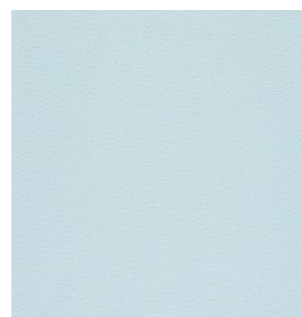
760



775



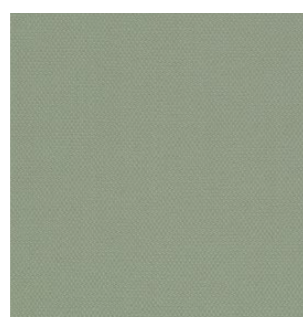
780



820



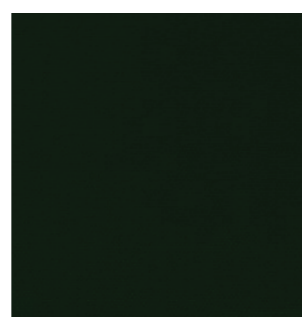
835



935



950



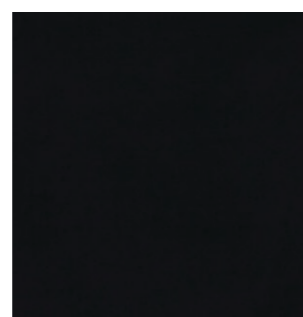
975



985



1122

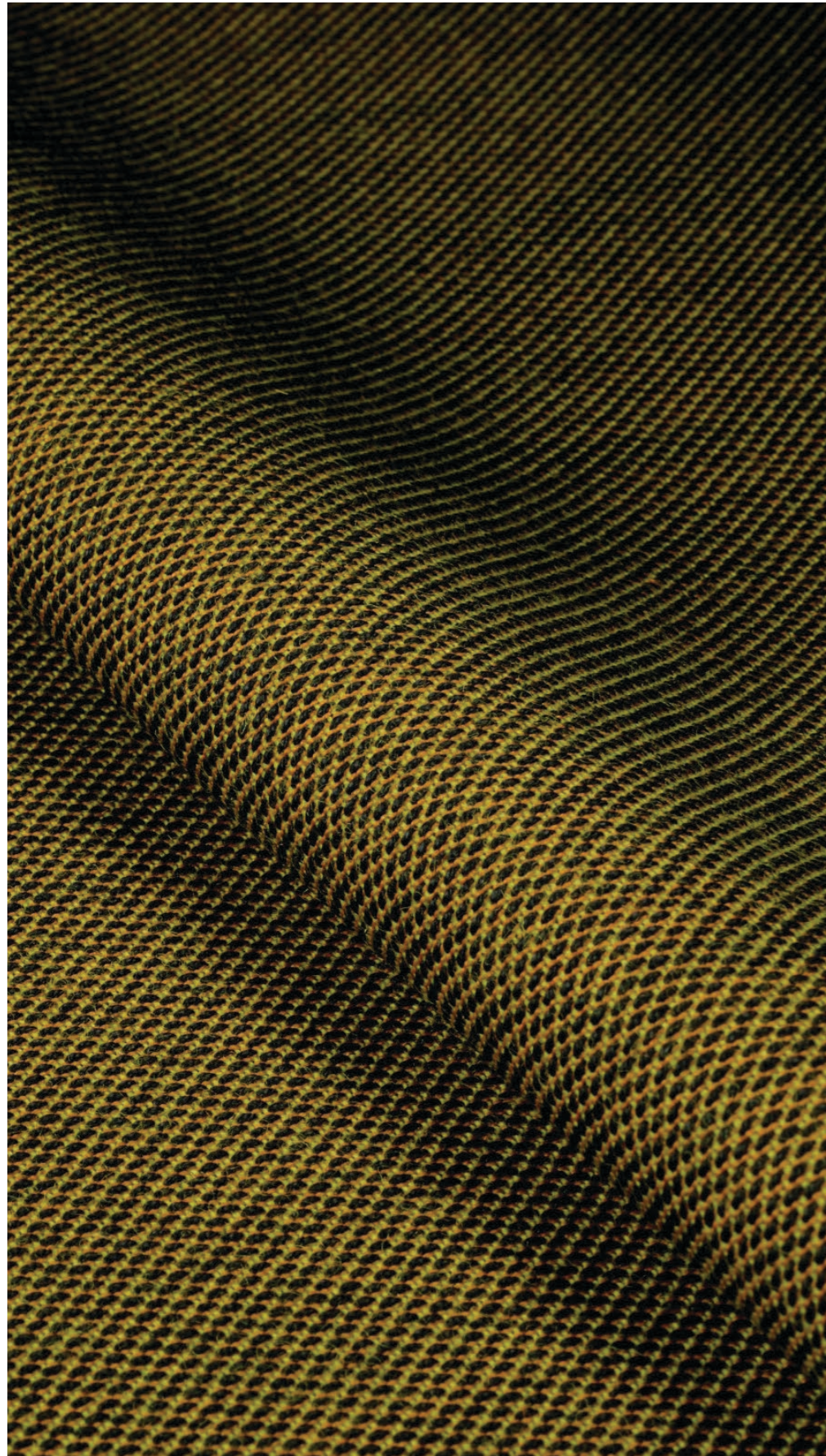


0917



1362

STEELCUT TRIO 3  
*by Kvadrat*



PRICE CATEGORY  
2

MANUFACTURER  
Kvadrat

MATERIALS  
90% New wool  
10% Nylon

MARTINDALE  
100.000

LIGHTFASTNESS  
5-7

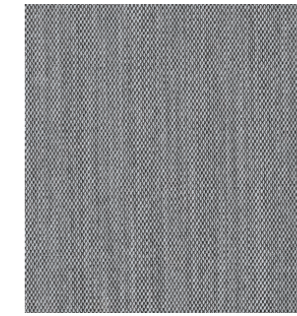
PILLING  
4



105



113



124



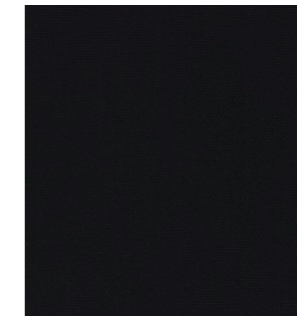
133



153



176



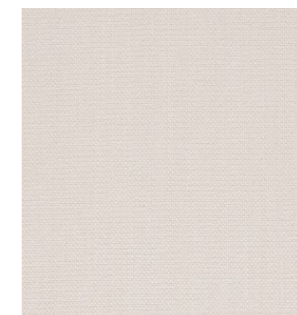
195



205



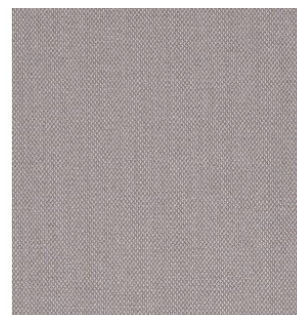
213



226



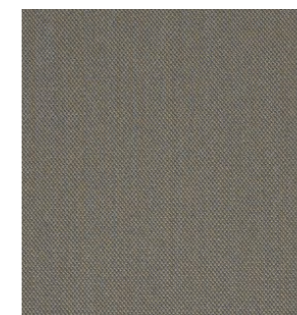
236



246



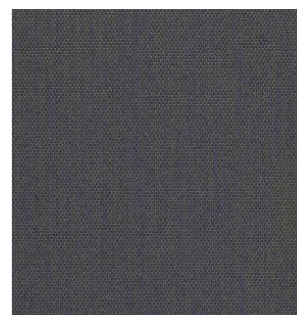
253



266



276



283



336



376



383



416





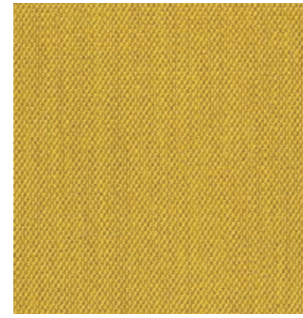
426



436



446



453



756



776



796



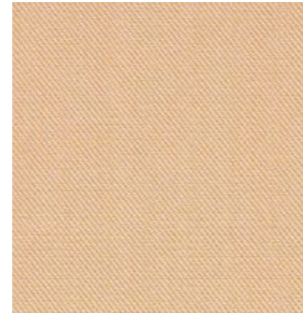
806



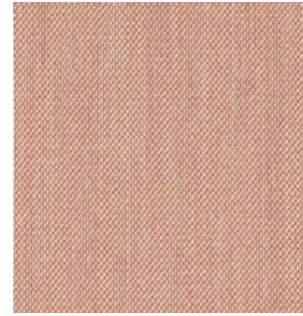
466



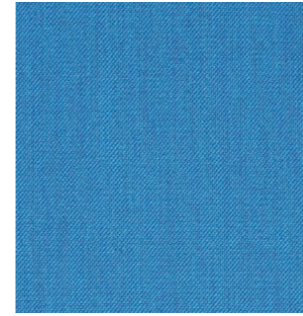
476



506



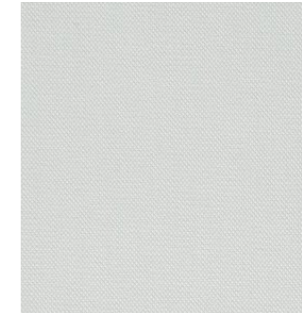
515



865



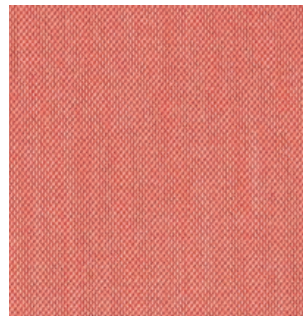
883



906



916



526



533



553



576



946



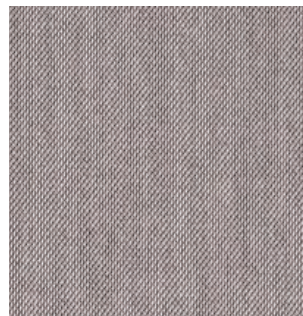
953



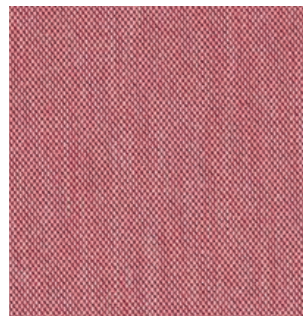
966



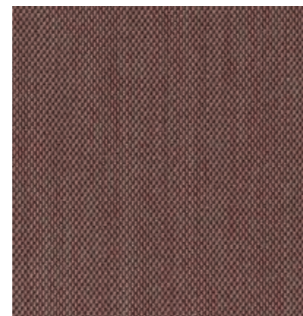
976



616



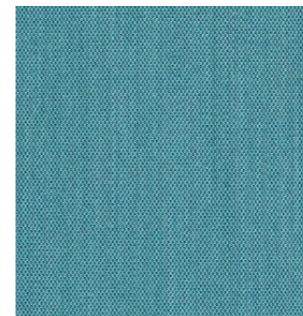
636



645



666



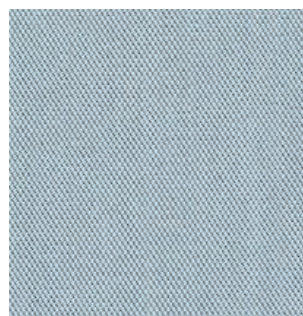
983



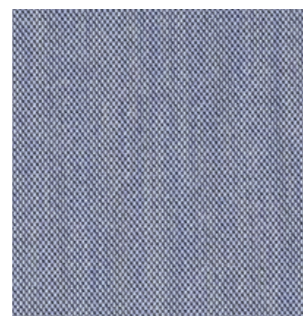
996



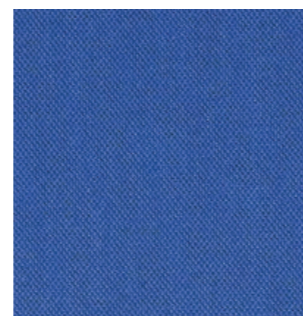
686



713

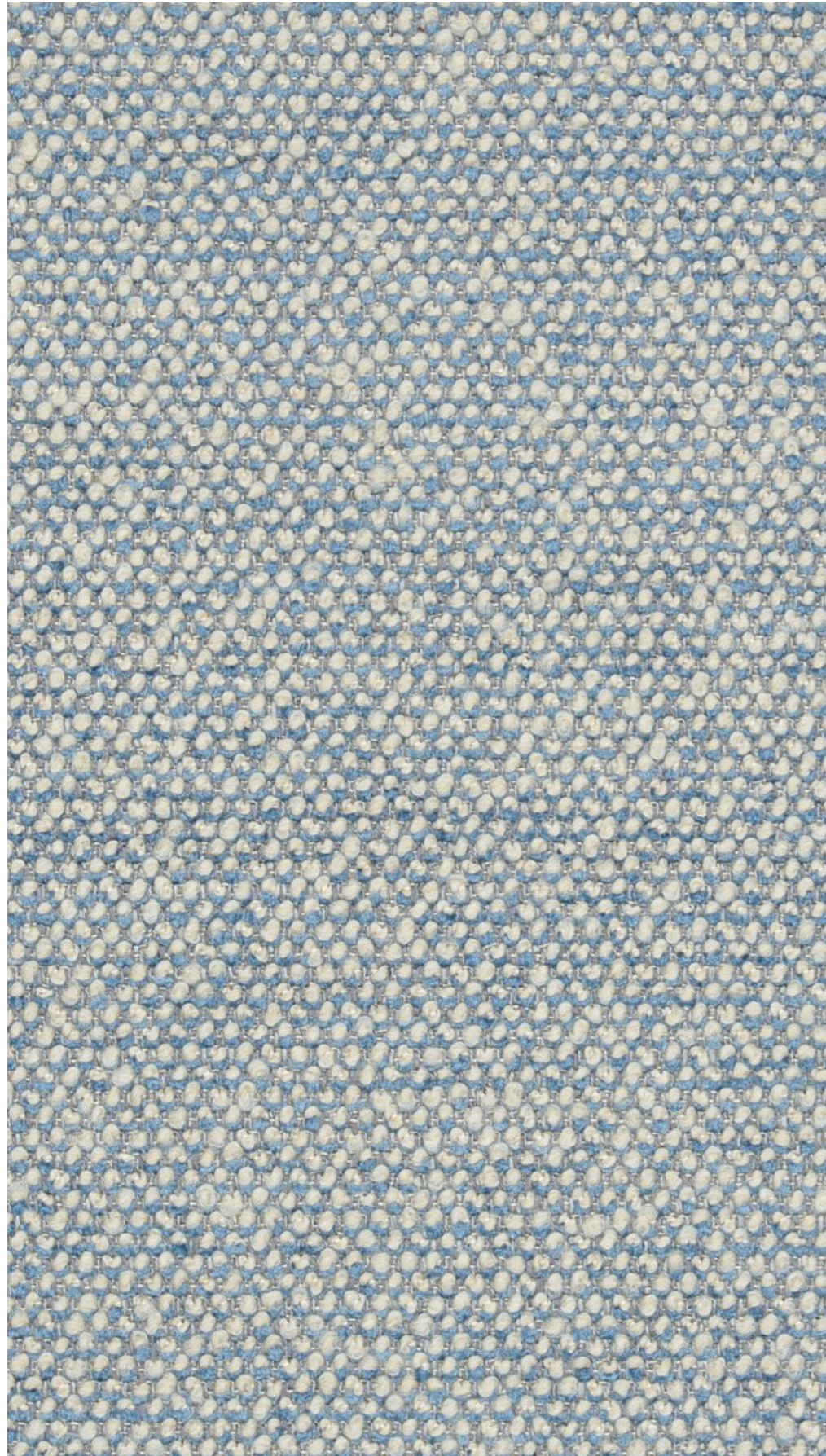


716



746

## *Textile Category 3*



PRICE CATEGORY  
3

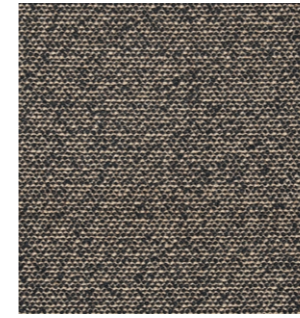
MANUFACTURER  
Sahco

MATERIALS  
43% Viscose  
17% Polyacrylic  
15% New wool  
9% Cotton  
8% Linen  
8% Polyester

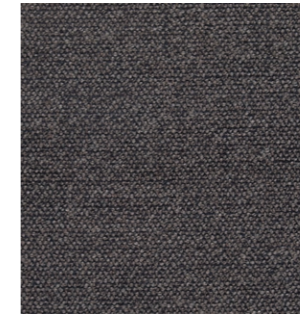
MARTINDALE  
40.000

LIGHTFASTNESS  
6

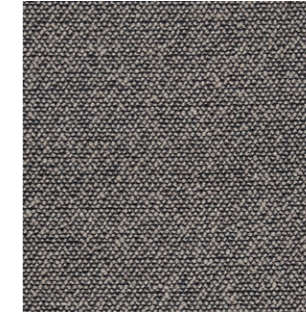
PILLING  
3



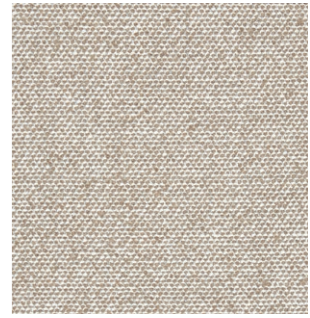
001



002



003



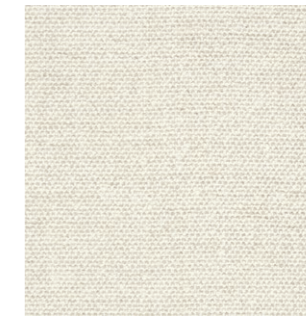
004



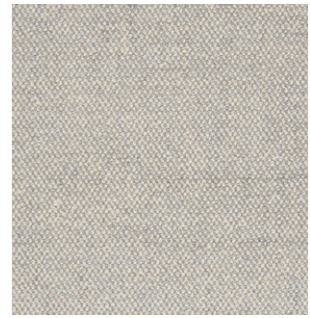
005



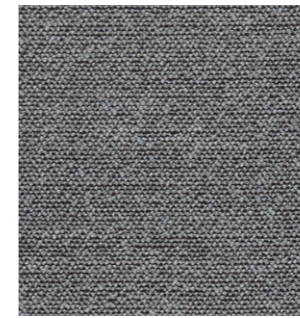
006



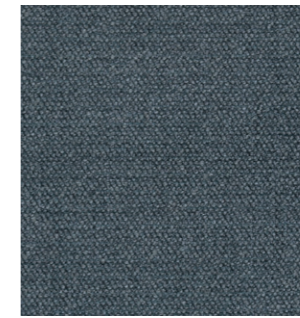
007



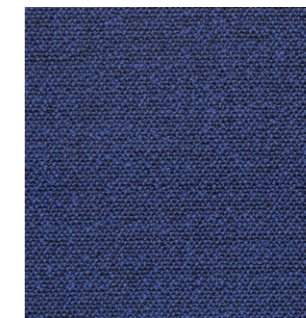
008



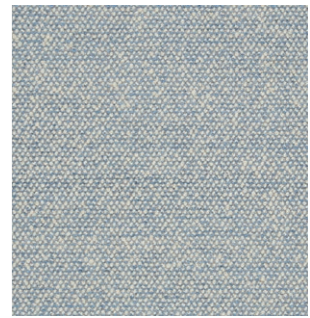
009



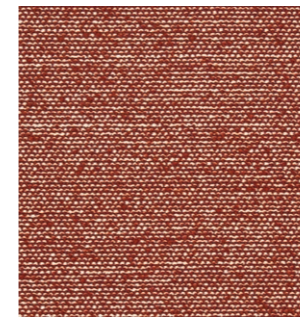
010



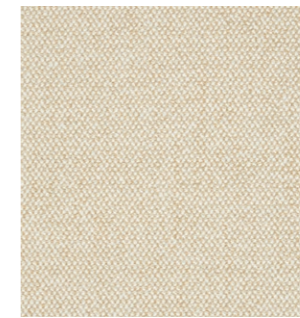
011



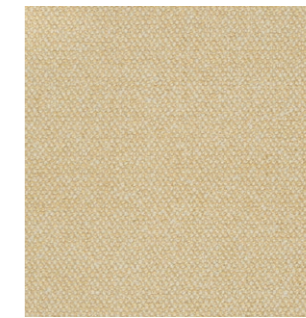
012



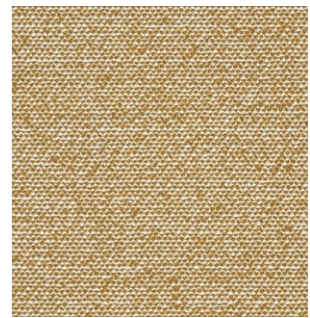
013



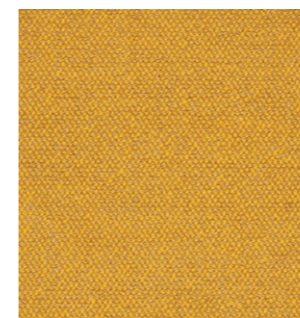
014



015



016



017

VIDAR 4  
by Kvadrat



PRICE CATEGORY  
3

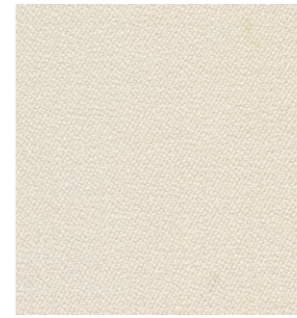
MANUFACTURER  
Kvadrat

MATERIALS  
94% New wool  
6% Nylon

MARTINDALE  
100.000

LIGHTFASTNESS  
7 (ISO 1-8)

PILLING  
4 (ISO 1-5)



0106



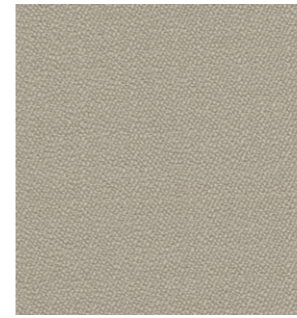
0123



0133



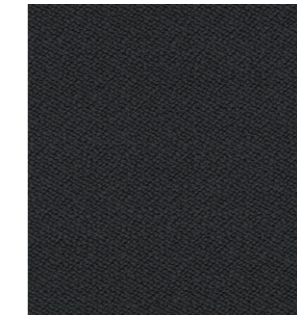
0143



0146



0152



0182



0222



0323



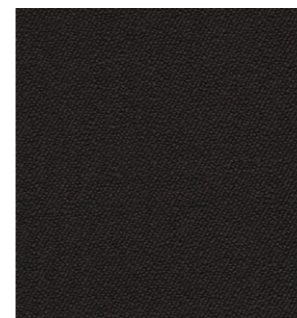
0333



0353



0363



0386



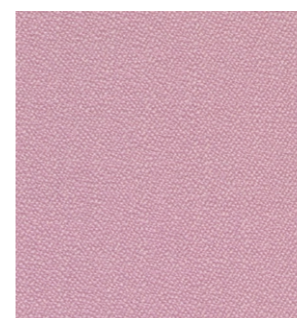
0443



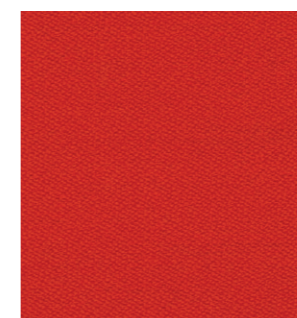
0456



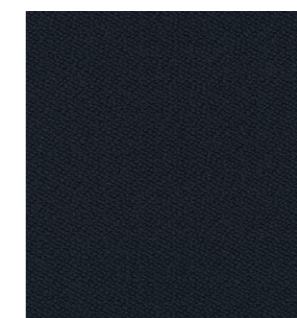
0472



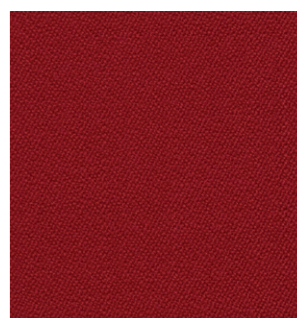
0526



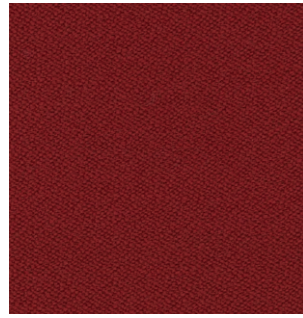
0542



0554



0556



0582



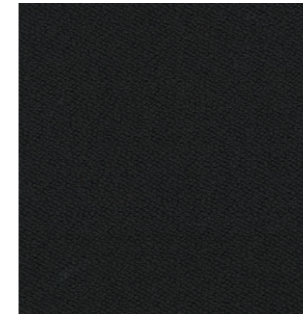
0622



0633



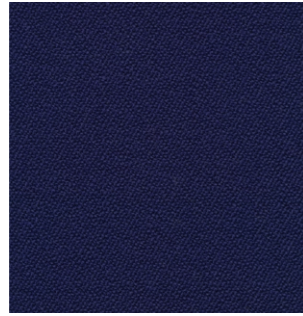
0653



1880



0656



0676



0693



0723



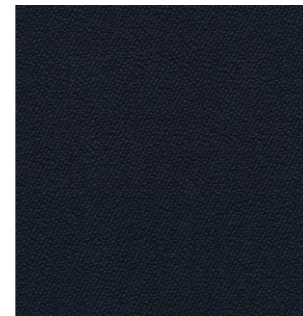
0733



0743



0772



0786



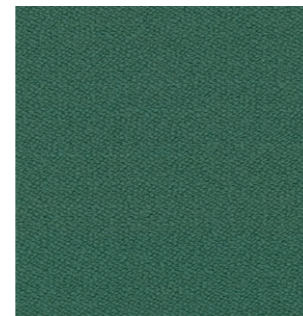
0872



0913



0932



0943



0956



0972



1062



1511

## *Textile Category 4*

GRAND MOHAIR  
*by Danish Art Weaving*



---

PRICE CATEGORY  
4

---

MANUFACTURER  
Danish Art Weaving

---

MATERIALS  
100% Mohair

---

MARTINDALE  
Being tested  
(>200.000 Wyzenbeek)

---

LIGHTFASTNESS  
4,5 (ISO 1-8)

---

PILLING  
Being tested

---

CERTIFICATES  
Oeko-Tex



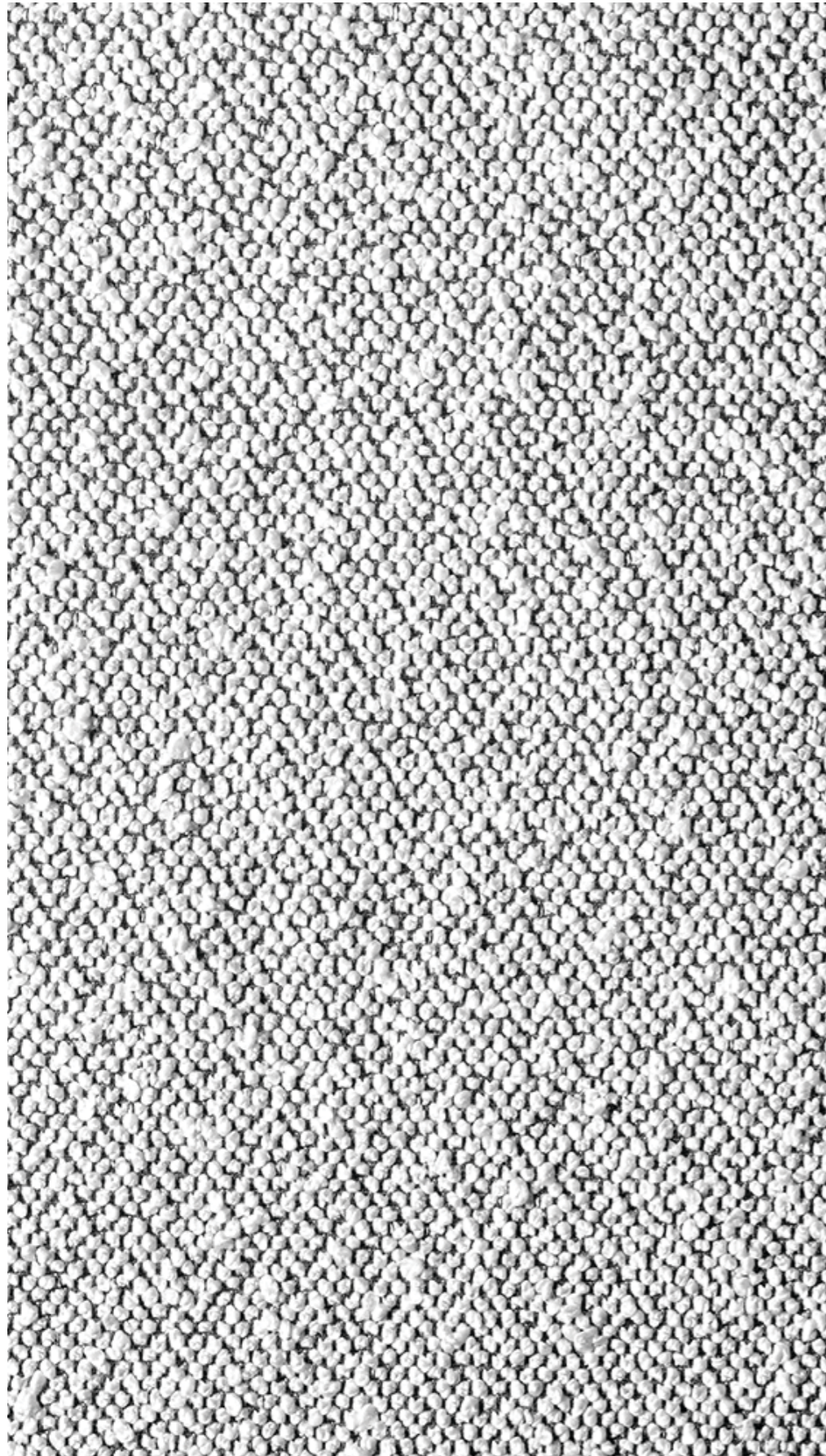
1103



2600



8205



PRICE CATEGORY  
4

MANUFACTURER  
Dedar

MATERIALS  
72% Wool  
27% Cotton  
1% Polyamide

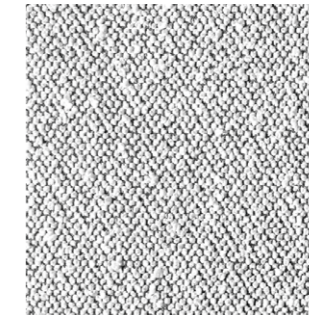
MARTINDALE  
40.000



T19028\_001



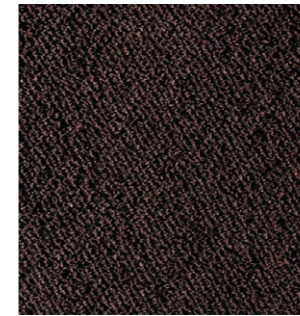
T19028\_002



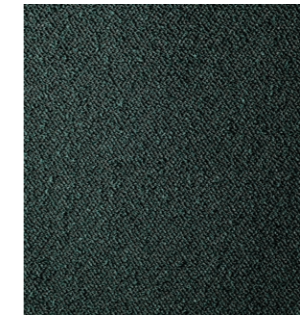
T19028\_003



T19028\_004



T19028\_005



T19028\_006



T19028\_007



T19028\_008



T19028\_009



The Audo upholstery programme shows an overview of our textile and leather standard programme. All textile and leather collections are available in all colours.

Please note that the colour references are only intended as a guide. For further information please see manufacturer websites, or contact your local Audo sales representative.

Selection of textiles or leather outside of our upholstery programme, is subject to final testing and approval. Additional deliverytime may also occur.

SORENSENLEATHER.COM  
NEVOTEX.COM



Use table to determine the upholstery options available for fabric-covered items.

PRICE CATEGORY 1	AFTERROOM	BRASILIA	CO CHAIR	CONSTANCE CHAIR	HARBOUR CHAIR	HARBOUR LOUNGE CHAIR	INGEBORG	KNITTING CHAIR	MERKUR	MINGLE	MY OWN CHAIR	READY	THE TIRED MAN	VILHELM	THE PENGUIN	ELIZABETH	THE SEAL
DAKAR, NEVOTEX	●	●	●		●	●	○	○	●		○	●	○	○	●	●	●
ULTRA, SØRENSEN LEATHER	●	●	●		●	●	○	○	●		○	●	○	○	○	○	○
ULTRA CRIB 5, SØRENSEN LEATHER	●	●	●		●	●	○	●	○		○	●	○	○	○	○	○
PRICE CATEGORY 2																	
DUNES, SØRENSEN LEATHER	●	●	●		●	○	○	○	●		○	●	○	○	●	●	●
NUANCE, SØRENSEN LEATHER	●	○	●		●	○	○	○	○		○	○	○	○	○	○	○
PRICE CATEGORY 3																	
ROYAL NUBUCK, SØRENSEN LEATHER	●	○	●		●	●	○	○	○		○	○	○	○	○	○	○
SHEEPSKIN CURLY, SKANDILOCK				●			●			●	●		●	●			
SHEEPSKIN CURLY, NEVOTEX		●						●									
PRICE CATEGORY 4																	
ELEGANCE, SØRENSEN LEATHER	●	○	●		●	○		○			○		○		●	●	●

- TESTED AND APPROVED.
- NOT TESTED YET, BUT POSSIBLE TO TEST

# *Leather Category 1*



PRICE CATEGORY  
1

MANUFACTURER  
Nevotex

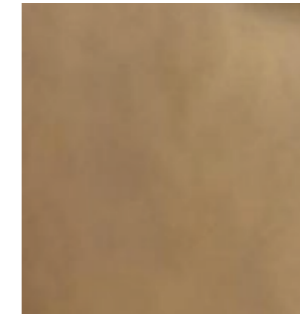
MATERIALS  
Aniline leather

THICKNESS  
0.9 – 1.1 mm

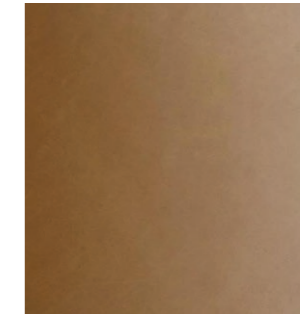
CERTIFICATE  
OEKO-TEX®



0197 TAN



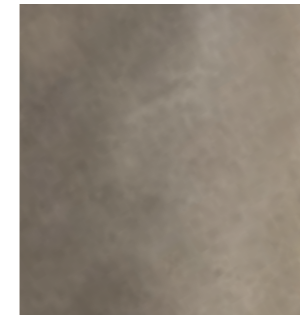
0229 CHESTNUT



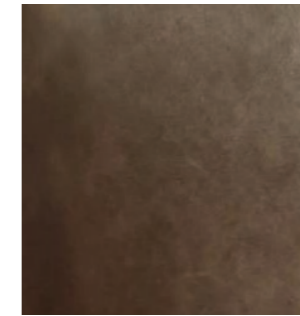
0250 COGNAC



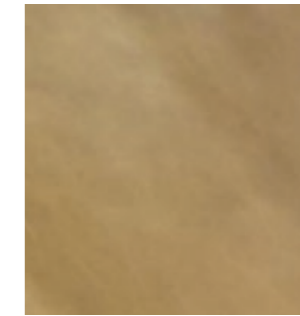
0258 SOIL



0311 ANTILOP



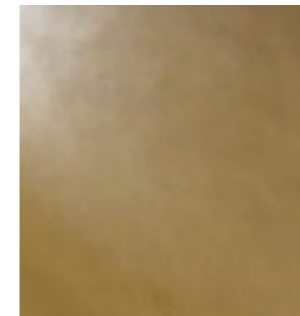
0329 BROWN



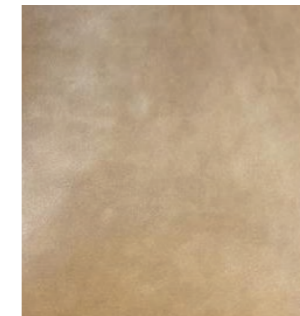
0549 DUNE



0550 YELLOW



0551 WHISKY



0565 ORANGE



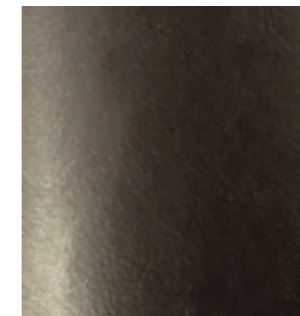
0681 DARK GREEN



0691 TERRAGON



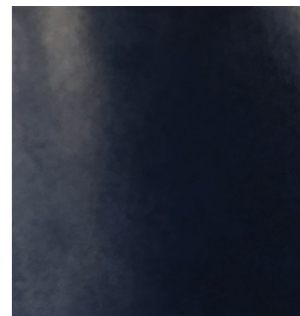
0692 LIGHT GREEN



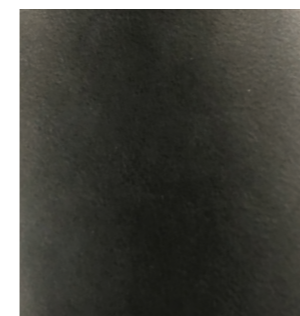
0738 AUBERGINE



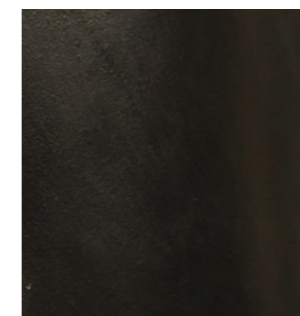
0778 TURKIS



0779 DEEP BLUE



0780 DARK GREY



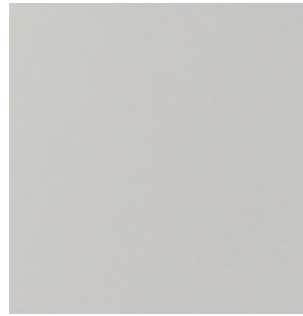
0842 BLACK



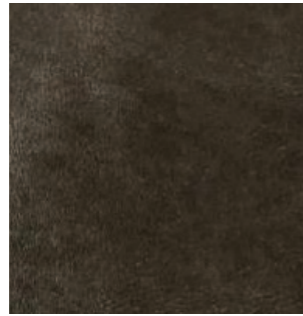
0854 GREY



0855 GRAYSHADOW



01015 WHITE



03009 CIOOCO



04009 PARROT



04010 POT-PORRY



04060 PURPLE



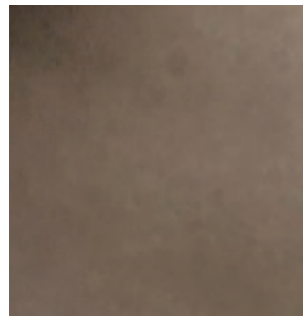
04109 RED



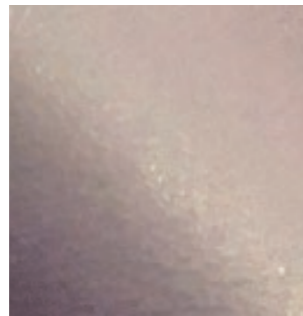
04147 DARK RED



06013 GREEN



06048 PEATMOOS



07008 DARK PURPLE



08079 LIGHT GREY

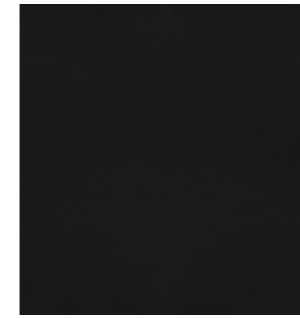


PRICE CATEGORY  
1

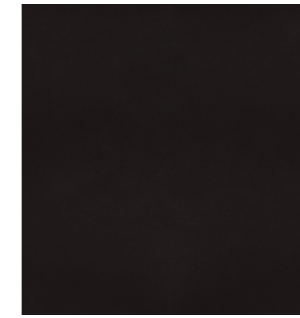
MANUFACTURER  
Sørensen Leather

MATERIALS  
Protected leather

THICKNESS  
0.9 – 1.1 mm



BLACK - 41599



BLACK BROWN - 41590



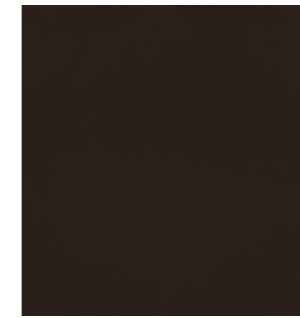
NAVY - 41573



ANTHRAZITE - 41580



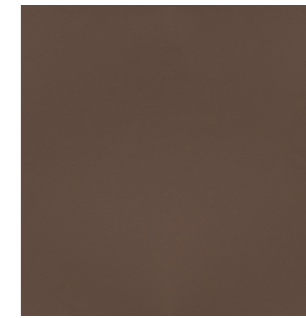
LAVA - 41575



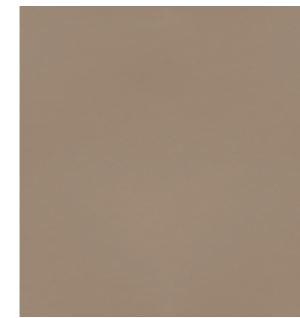
CHOCOLATE - 41589



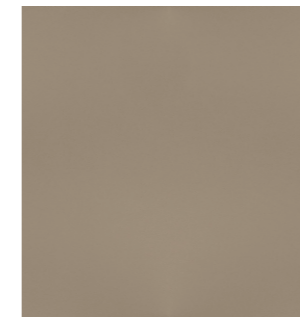
GREY - 41585



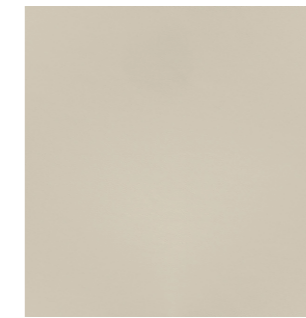
SAFARI - 41586



EARTH - 41584



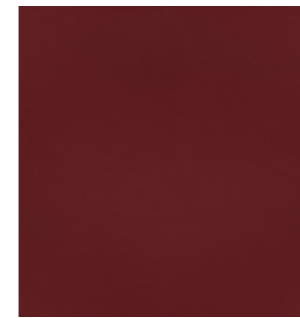
ALTWEISS - 41576



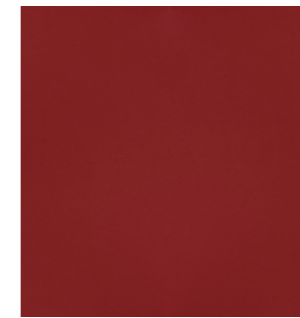
EGGSHELL - 41581



WHITE - 41594



BRICK - 41579



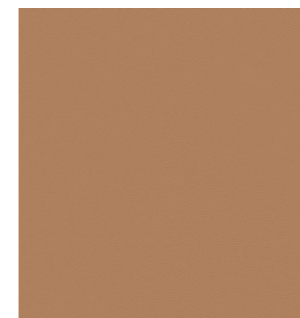
POPPY - 41578



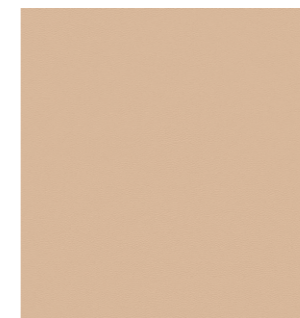
COGNAC - 41598



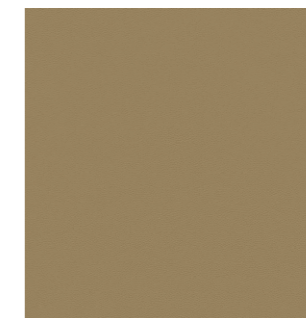
BRANDY - 41574



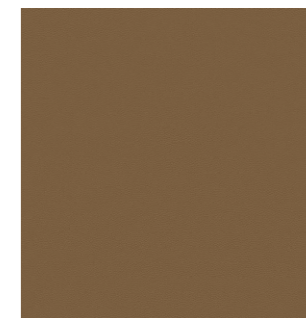
CAMEL - 41571



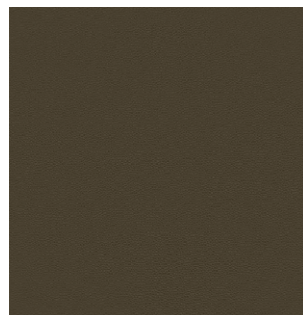
HONEY - 41572



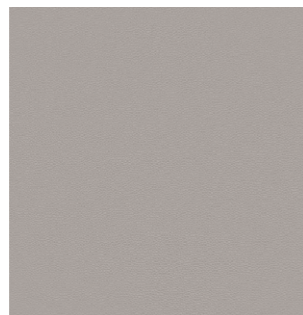
LEAF - 41566



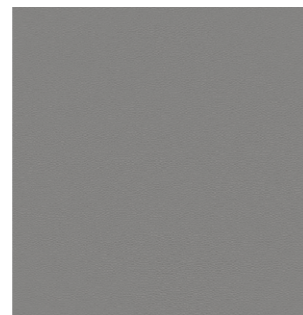
MARSH - 41570



MOSS - 41569



OAT - 41568



SMOKE - 41567

ULTRA CRIB 5  
by Sørensen Leather



PRICE CATEGORY  
1

MANUFACTURER  
Sørensen Leather

MATERIALS  
Protected leather

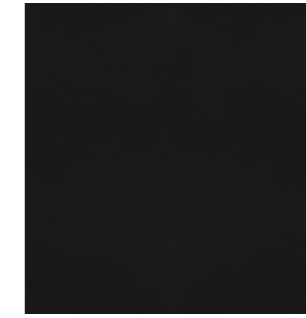
THICKNESS  
0.9 – 1.1 mm



41610



41615



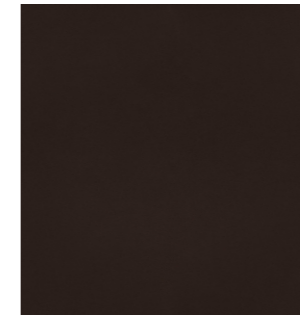
41616



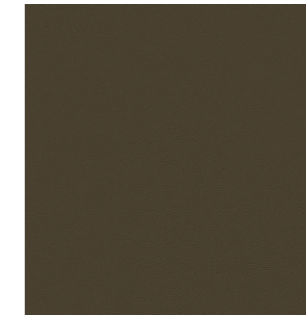
41612



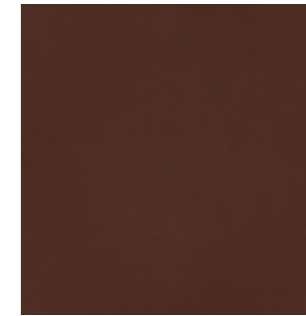
41611



41614



41617



41613



## *Leather Category 2*

DUNES  
*by Sørensen Leather*



---

PRICE CATEGORY  
2

---

MANUFACTURER  
Sørensen Leather

---

MATERIALS  
Aniline leather

---

THICKNESS  
1.1 – 1.3 mm

---

CERTIFICATE  
Nordic Swan Ecolabel



DARK BROWN - 21001



RUST - 21002



CAMEL - 21004



ANTHRAZITE - 21003



COGNAC - 21000



RACING GREEN - 21005



GREY - 21007



PRICE CATEGORY  
2

MANUFACTURER  
Sørensen Leather

MATERIALS  
Protected leather

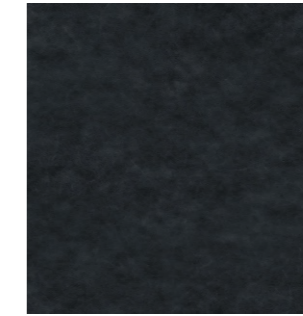
THICKNESS  
1.1 – 1.3 mm



SHADOW GREY - 40780



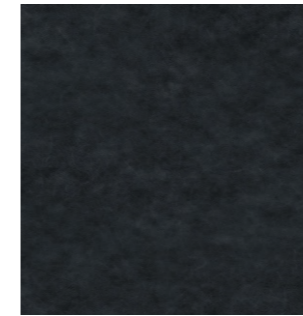
EARTHY GREY - 40781



HEAVENLY GREY - 40781



SMOKED GREY - 40784



BURNED GREY - 40783



LIGHT GREY - 40782



DARK GREEN - 40787



DARK BROWN - 40791



CINNAMON - 40788



BURGUNDY - 40789



WALNUT - 40790



RUST - 40786

*Leather Category 3*

ROYAL NUBUCK  
*by Sørensen Leather*



PRICE CATEGORY  
3

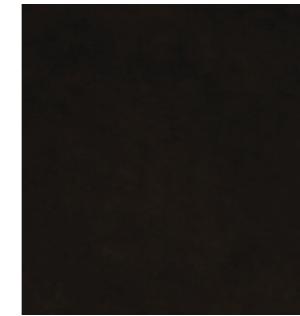
MANUFACTURER  
Sørensen Leather

MATERIALS  
Aniline leather

THICKNESS  
1.2 – 1.6 mm



MINERAL - 30251



HAVANNA - 30258



STONE - 30255



OFF-WHITE - 30252



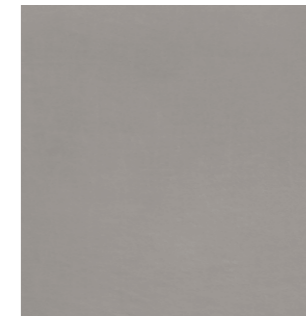
LAVA - 30254



CINNAMON - 30257



ALMOND - 30256



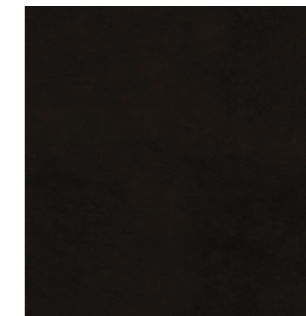
LIGHT GREY - 30250



ECRU - 30253



COGNAC - 30260



BLACK - 30259

SHEEPSKIN  
*by Skandilock*



---

PRICE CATEGORY  
3

---

MANUFACTURER  
Skandilock

---

MATERIALS  
Sheepskin

---

THICKNESS  
17 mm



OFF WHITE



SAHARA



MOONLIGHT



HONEY



ESPRESSO



GREEN TEA



---

PRICE CATEGORY  
3

---

MANUFACTURER  
Nevotex

---

MATERIALS  
Sheepskin

---

THICKNESS  
17 – 21mm



NATURE



SAHARA



ROOT

*Leather Category 4*





PRICE CATEGORY  
4

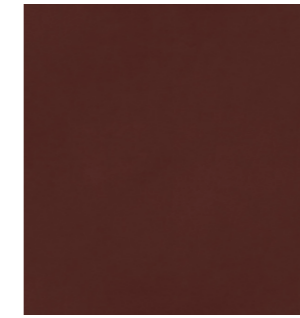
MANUFACTURER  
Sørensen Leather

MATERIALS  
Aniline leather

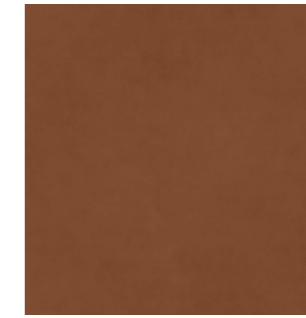
THICKNESS  
1.2 – 1.4 mm



BLACK - 20198



INDIAN RED - 20193



WALNUT - 20195

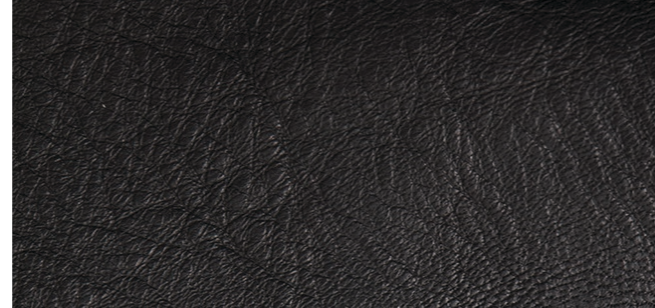


MOCCA - 20197

Individual and unique markings may appear on the leather and should not be considered as defects.



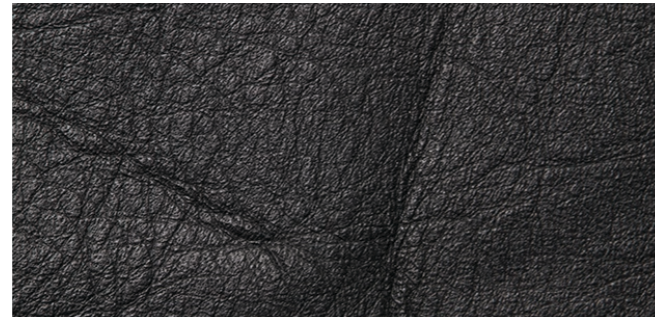
FAT WRINKLES



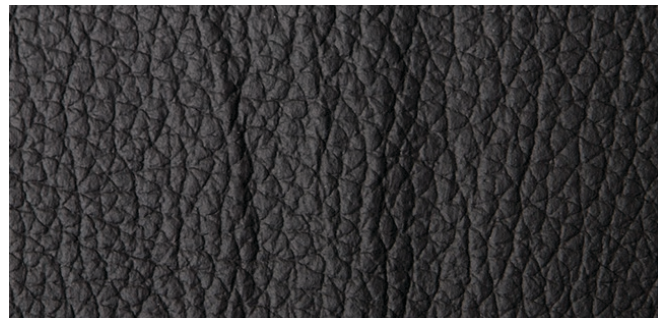
SCAR / INSECT BITES



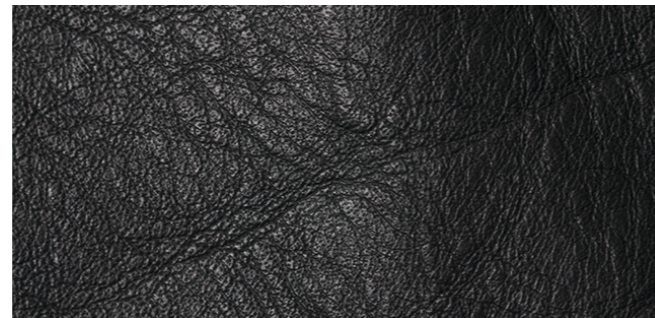
FOLDS



BUTCHING SCAR



HEALED SCARS



FAT WRINKLES

