

# Audo



UPHOLSTERY

JUNE 2025, UK

## AUDO UPHOLSTERY PROGRAMME

### *Textile*

The Audio Upholstery Program is an overview of the textile and leathers available for Audio upholstered furniture. All textile and leather options are available in all colors. You'll find over 100 fabric and leather options, with the most popular configurations available with expedited delivery in our Quick Ship program. Custom upholstery orders from our Audio Upholstery Program (SPEC) are ready to ship with standard delivery lead times. Our Fixed Combinations listed in this Brand Book are suggested upholsteries selected by our design team, and deliver with standard lead times.

We are happy to upholster furniture using customer's own materials (COM) with extended delivery lead times, upon fabric approval. COM products are to be calculated by PC1T if in textile and PC1L if in leather, excluding the price of the fabric.

Please note that the color references in this upholstery programme are only intended as a guide. For further information please see manufacturer websites, or contact your local Audio Sales Representative for samples or further information.

KVADRAT.DK  
SAHCO.COM  
NEVOTEX.COM  
JAB.DE  
YARNCOLLECTIVE.CO.UK  
DANISHARTWEAVING.COM  
DESIGNERSGUILD.COM  
DEDAR.COM



# TEXTILE UPHOLSTERY SELECTION & FURNITURE

Use table to determine the upholstery options available for fabric-covered items.

- TESTED AND APPROVED.
- NOT TESTED, BUT PRE-APPROVED BY SUPPLIER

	AFTERROOM	BRASILIA	CAIRN	CO CHAIR	EAVE COLLECTION	EAVE SEAMLINE	HARBOUR CHAIR	HARBOUR LOUNGE CHAIR	INGEBORG	KNITTING CHAIR	MERKUR	MINGLE	MY OWN CHAIR	OFFSET	PASSAGE	READY	TEAROOM CHAIR	TEAROOM SOFA	THE TIRED MAN	VILHELM	THE PENGUIN	ELIZABETH	ODA	PAGODE	RADIOHUS	THE SEAL
PRICE CATEGORY 1																										
BARNUM BOUCLÉ, AUDDO	●	●	●	●	●	●	●	○	○	○	●	○	○	●	○	●	●	●	●	○	○	○		○	○	○
ILLUSION, NEVOTEX	○	○	○	○	○	○	○		○	●	○	○	○	○	○	○	○	○	○	○	○	○			○	○
LOGAN, YARN COLLECTIVE	●	●	●	●	●	●	●	●	●	●	●	●	●	●	●	●	●	●	●	●	●	●	●	●	●	●
MAPLE, KVADRAT	●	●	●	●	●	●	●		○	●	○	○	○	●	○	○	●	●	○	○						
REMIX, KVADRAT	●	●	●	●	●	●	●	●	○	●	○	○	●	●	○	●	●	●	○	○	●	●		●	●	●
RE-WOOL, KVADRAT	●	○	●	●	●	●	●	●	○	○	○	○	○	●	○	●	●	○	○	○	●	●		●	●	●
PRICE CATEGORY 2																										
CANVAS 2, KVADRAT	●	●	●	●	●	●	●	●	○	●	○	○	○	●	○	●	●	●	○	○	○	○		○	○	○
CLAY, SAHCO, KVADRAT	●	●	○	●	●	●	●	○	○	○	○	○	○	●	○	○	●	●	○	○	○	○		○	○	○
FIORD, KVADRAT	●	●	●	●	●	●	●	●	●	●	○	○	●	●	○	●	●	●	○	●	●	●		●	●	●
HALLINGDAL 65, KVADRAT	●	●	●	●	●	●	●	●	●	●	●	●	●	●	○	●	●	●	●	●	●	●	●	●	●	●
KEIGA, KVADRAT	●	●	●	●	●	●	●	●	●	●	●	●		●	●	●	●	●	●	●		●	●	●	●	●
MOSS, SAHCO, KVADRAT	●	●	●	●	●	●	●	●	○	●	○	○	○	●	○	●	●	●	●	●	●	●	○	○	○	○
STEELCUT TRIO 3, KVADRAT	●	○	●	●	●	●	●	●	○	●	○	○	○	●	○	○	●	●	○	●	●	●		○	○	●
PRICE CATEGORY 3																										
BARU, SAHCO, KVADRAT	●	●	●	●	●	●	●	●	●	●	●	●	●	●	●	●	●	●	●	●	●	●	●	●	●	●
SAFIRE, SAHCO, KVADRAT	●	●	●	●	●	●	●	●	○	●	○	○	●	●	○	○	●	●	○	○	●	○	○	●	●	○
SERPENTINE, KVADRAT	●	●	●	●	●	●	●	●	●	●	●	●	●	●	●	●	●	●	●	●	●	●	●	●	●	●
VIDAR 4, KVADRAT	●	●	●	●	●	●	●	●	●	○	○	●	●	●	○	○	●	●	○	●	●	○	○	○	○	○
PRICE CATEGORY 4																										
GRAND MOHAIR, DANISH ART WEAVING	○	○	●	●			○	●	●	○	○	●	○		○	○	○	●	○	●	○	○		○	○	○
LUPO, DEDAR	●	○	○	●	●	●	●	○	○	○	○	○	○	●	○	○	●	○	○	○	○	○	○	○	○	○

*Textile Category 1*

BARNUM BOUCLE  
*by Audo*

Woven from a cotton-wool blend, Barnum Bouclé is crafted with twisted, looped yarns for a durable, nubby surface finish that enhances the softness and comfort of the fabric.

Available in a range of beautiful muted colours.

---

PRICE CATEGORY  
1

---

MANUFACTURER  
Audo

---

MATERIALS  
45% Cotton  
19% Viscose  
15% Wool  
13% PC  
8% Polyester

---

DURABILITY  
60.000 Martindale

---

LIGHTFASTNESS  
5 (ISO 1-8)

---

PILLING  
4 (ISO 1-5)

---

C&M (BS5852-0/1)  
Yes

---

CAL 117  
Yes

---

CRIB 5 (BS5852-5)  
No - Cannot be treated



04



05



07



10



11



13



19



21



24

ILLUSION  
by Nevotex

A synthetic leather crafted from Polyurethane (PU), Illusion is a versatile choice for a range of applications, particularly well-suited for use in hospitality settings and other high-traffic environments with elevated hygiene requirements thanks to its easy-clean surface.

---

PRICE CATEGORY  
1

---

MANUFACTURER  
Nevotex

---

MATERIALS  
100% Polyester

---

THICKNESS  
1 mm

---

DURABILITY  
500.000 Martindale

---

LIGHTFASTNESS  
>7 (ISO 1-8)

---

PILLING  
4-5 (ISO 1-5)

---

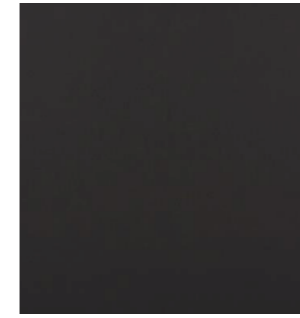
C&M (BS5852-0/1)  
Yes

---

CAL 117  
Yes

---

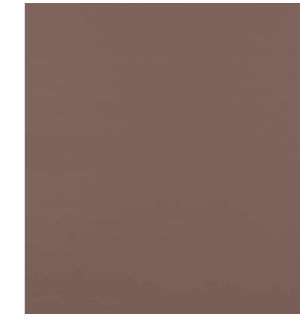
CRIB 5 (BS5852-5)  
Yes



00110



44388



47124



85020



85352

**LOGAN**  
*by Yarn Collective*

A modern interpretation of traditional wool bouclé, Logan is spun from a recycled cotton-wool blend for a super soft feel and structured look. Its subtle texture features the distinctive unevenness and character of classic bouclé.



YC04064-01



YC04064-02



YC04064-03

---

PRICE CATEGORY  
1

---

MATERIALS  
66% Recycled Cotton  
15% Wool  
15% Acrylic  
4% Polyester

---

MARTINDALE  
45.000

---

LIGHTFASTNESS  
4-5

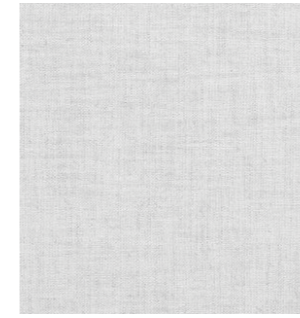
---

PILLING  
5

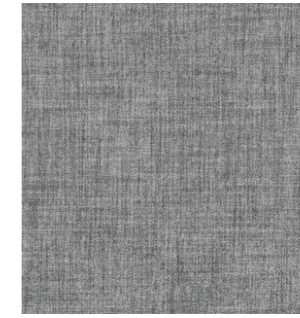
MAPLE  
by Kvadrat



Crafted with aero finishing for an exceptionally soft feel, Maple features three tonal chenille yarns and a plush pile that reveals the intricacies of its weave and a casually irregular expression. Viscose lends a unique shimmer, intensifying with changes in light and perspective.



0112



0162



0222



0352



0392



0722



0742

PRICE CATEGORY  
1

MANUFACTURER  
Kvadrat

MATERIALS  
63% Cotton  
37% Linen

DURABILITY  
55.000 Martindale

LIGHTFASTNESS  
4-5 (ISO 1-8)

PILLING  
4-5 (ISO 1-5)

C&M (BS5852-0/1)  
No

CAL 117  
No

CRIB 5 (BS5852-5)  
No



REMIX 3  
by Kvadrat



Remix embodies simplicity, elegance and minimalism from a distance, while revealing complexity, nuance and vibrancy up close. This duality is accomplished by intricately weaving two contrasting yarns, each carrying up to three distinct hues.

Its remarkable depth of colour seamlessly transitions into a uniform shade when viewed from a distance.

---

PRICE CATEGORY  
1

---

MANUFACTURER  
Kvadrat

---

MATERIALS  
90% New Wool (Worsted)  
10% Nylon

---

DURABILITY  
100.000 Martindale

---

LIGHTFASTNESS  
6 (ISO 1-8)

---

PILLING  
4 (ISO 1-5)

---

C&M (BS5852-0/1)  
Yes

---

CAL 117  
Yes

---

CRIB 5 (BS5852-5)  
No - Can be treated



0123



0133



0143



0163



0223



0233



0433



0733



0852



0873



0954

RE-WOOL  
by Kvadrat



Re-wool is a luxurious upholstery fabric that champions sustainability. Made with recycled wool, it features a woven stitch-like surface with a remarkable colour depth that creates a dynamic visual interplay on furniture surfaces.

---

PRICE CATEGORY  
1

---

MANUFACTURER  
Kvadrat

---

MATERIALS  
45% Recycled Wool (Worsted)  
45% New Wool (Worsted)  
10% Nylon

---

DURABILITY  
100.000 Martindale

---

LIGHTFASTNESS  
6 (ISO 1-8)

---

PILLING  
4 (ISO 1-5)

---

C&M (BS5852-0/1)  
Yes

---

CAL 117  
Yes

---

CRIB 5 (BS5852-5)  
No - Can be treated



0128



0198



0218



0378



0448



0558



0718



0768

## *Textile Category 2*

CANVAS 2  
by Kvadrat



A structured and durable worsted wool upholstery fabric ideal for expansive surfaces, Canvas 2 features a subtle weave comprised of three melange yarns for colour richness and texture. While appearing as a serene, unicoloured textile from a distance, upon closer inspection it reveals six colour nuances.

PRICE CATEGORY  
2

MANUFACTURER  
Kvadrat

MATERIALS  
90% New Wool (Worsted)  
10% Nylon

DURABILITY  
100.000 Martindale

LIGHTFASTNESS  
5-6 (ISO 1-8)

PILLING  
4 (ISO 1-5)

C&M (BS5852-0/1)  
Yes

CAL 117  
Yes

CRIB 5 (BS5852-5)  
No - Can be treated



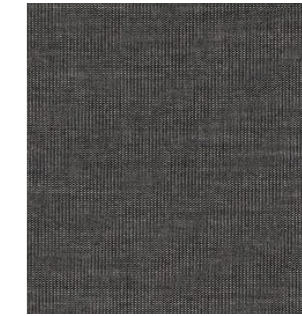
114



124



134



154



174



216



244



254



356



454



576



794



996

CLAY  
by Sahco



Clay is the result of skilfully interwoven warp and weft yarns. The cotton-linen blend upholstery fabric has a uniquely textured surface that exudes casual elegance. Enhanced with a supportive backing, Clay is an excellent choice for upholstering furniture.

---

PRICE CATEGORY  
2

---

MANUFACTURER  
Sahco

---

MATERIALS  
76% Linen  
21% Cotton  
3% Polyester

---

DURABILITY  
45.000 Martindale

---

LIGHTFASTNESS  
5-6 (ISO 1-8)

---

PILLING  
4 (ISO 1-5)

---

C&M (BS5852-0/1)  
Yes

---

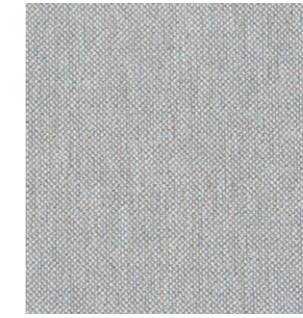
CAL 117  
No

---

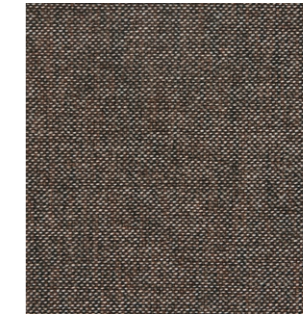
CRIB 5 (BS5852-5)  
No - Can be treated



0002



0003



0004



0005



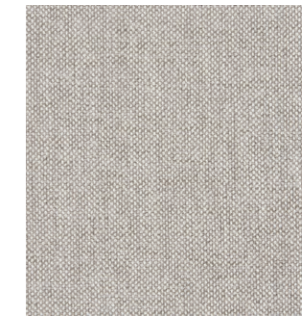
0008



0010



0011



0012



0015



0016



0017

FIORD 2  
by Kvadrat



A versatile upholstery fabric with a three-dimensional appearance, Fiord 2 cleverly merges a mélange yarn with a unicoloured yarn. Inspired by the moonlight casting a pearlescent glow on the rippling waters of a Norwegian fjord, its refined expression results in pearl-like dots that dance across the fabric's surface.

PRICE CATEGORY  
2

MANUFACTURER  
Kvadrat

MATERIALS  
92% New Wool (Worsted)  
8% Nylon

DURABILITY  
60.000 Martindale

LIGHTFASTNESS  
6 (ISO 1-8)

PILLING  
4-5 (ISO 1-5)

C&M (BS5852-0/1)  
Yes

CAL 117  
Yes

CRIB 5 (BS5852-5)  
No - Can be treated



121



191



271



322



371



451



521



591



751



782



951



961

HALLINGDAL 65  
by Kvadrat

Originally designed by Nanna Ditzel in 1965, Hallingdal 65 is an exceptionally durable upholstery fabric that features a harmonious blend of wool and viscose, both dyed before spinning to accentuate their texture. The wool contributes superior durability and flexibility, while the viscose enhances the colour with brilliance and depth.



PRICE CATEGORY  
2

MANUFACTURER  
Kvadrat

MATERIALS  
70% New Wool  
30% Viscose

DURABILITY  
100.000 Martindale

LIGHTFASTNESS  
7 (ISO 1-8)

PILLING  
3-4 (ISO 1-5)

C&M (BS5852-0/1)  
Yes

CAL 117  
Yes

CRIB 5 (BS5852-5)  
Yes



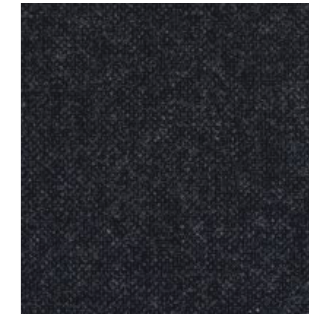
0110



0130



0166



0180



0200



0220



0224



0227



0270



0350



0600



0694

KEIGA  
*By Kvadrat*

With its matte wool base and contrasting shiny yarns, Keiga adds depth to any design with its softly rippled surface, reminiscent of natural landscapes.



0112



0232



0362

---

PRICE CATEGORY  
2

---

MATERIALS  
38% New Wool  
37% Viscose  
16% Linen  
9% Nylon

---

MARTINDALE  
50.000

---

LIGHTFASTNESS  
6

---

PILLING  
3-4



MOSS  
by Sahco



Moss stands out with its textured surface, a combination of twisted yarn and chenille that not only imparts a sense of movement to the fabric, but also provides a soft handle, adding a distinctive dimension to upholstered furniture. Colour options include both one- and two-tone combinations.

PRICE CATEGORY  
2

MANUFACTURER  
Kvadrat

MATERIALS  
52% Cotton  
22% Viscose  
14% Polyacrylic  
6% Linen  
3% Polyester  
3% Nylon

DURABILITY  
50.000 Martindale

LIGHTFASTNESS  
5-7 (ISO 1-8)

PILLING  
4-5 (ISO 1-5)

C&M (BS5852-0/1)  
Yes

CAL 117  
Yes

CRIB 5 (BS5852-5)  
No - Can be treated



0001



0002



0004



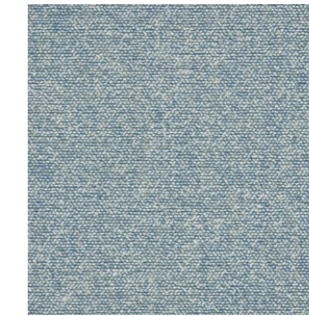
0005



0006



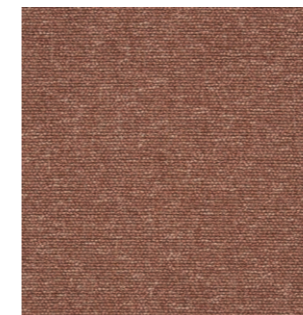
0008



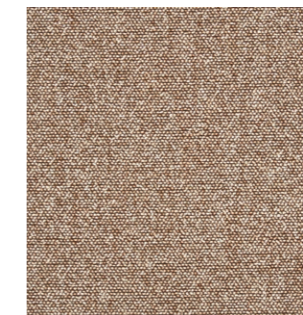
0010



0011



0012



0013



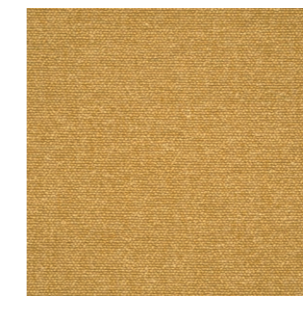
0016



0018



0019



0022

STEELCUT TRIO 3  
by Kvadrat

A durable woollen upholstery fabric with a three-dimensional surface, Steelcut Trio 3 has an intricate weave yet maintains a simple and precise expression. Yarn-dyed and spun from three coloured threads, it has a distinctive and sophisticated pattern reminiscent of small pyramids.



205



253



383

---

PRICE CATEGORY  
2

---

MANUFACTURER  
Kvadrat

---

MATERIALS  
90% New Wool (Worsted)  
10% Nylon

---

DURABILITY  
100.000 Martindale

---

LIGHTFASTNESS  
6-7 (ISO 1-8)

---

PILLING  
4 (ISO 1-5)

---

C&M (BS5852-0/1)  
Yes

---

CAL 117  
Yes

---

CRIB 5 (BS5852-5)  
No

## *Textile Category 3*

BARU  
*By Kvadrat*



This ultra-soft new-wool bouclé offers a comforting volume thanks to wool fibre elasticity and finishing techniques.

Resembling shorn fleece, with yarn dyed in warp and weft, it is soft and textural, with a slight shine from its acrylic blend.

---

PRICE CATEGORY  
3

---

MATERIALS  
87% New Wool  
10% Polyester  
3% Nylon

---

MARTINDALE  
65.000

---

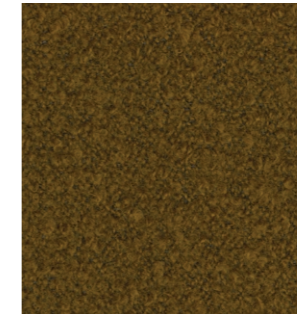
LIGHTFASTNESS  
4-5

---

PILLING  
5



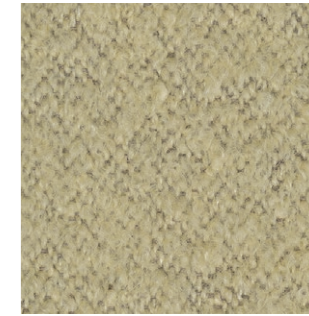
0950



0450



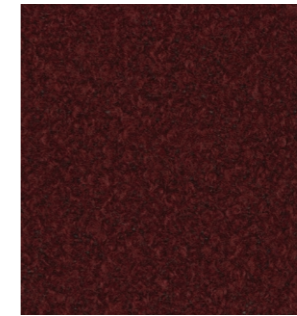
0200



0410



0330



0570

SAFIRE  
by *Sahco*



Safire has a subtle handwoven appearance that is both distinctive and dynamic. Soft and textured bouclé and chenille yarns not only enhance its woolly feel and soft allure but also impart a lively two-tone effect.

---

PRICE CATEGORY  
3

---

MANUFACTURER  
Sahco

---

MATERIALS  
43% Viscose  
17% Polyacrylic  
15% New wool  
9% Cotton  
8% Linen  
8% Polyester

---

DURABILITY  
40.000 Martindale

---

LIGHTFASTNESS  
5-6 (ISO 1-8)

---

PILLING  
3 (ISO 1-5)

---

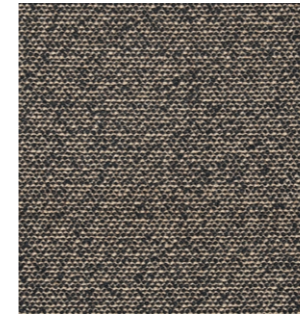
C&M (BS5852-0/1)  
Yes

---

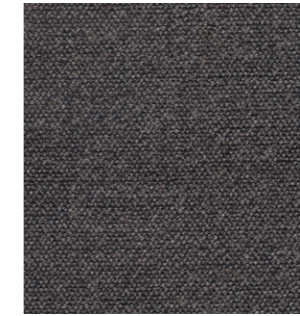
CAL 117  
Yes

---

CRIB 5 (BS5852-5)  
No - Cannot be treated



001



002



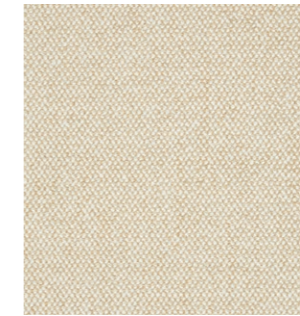
006



008



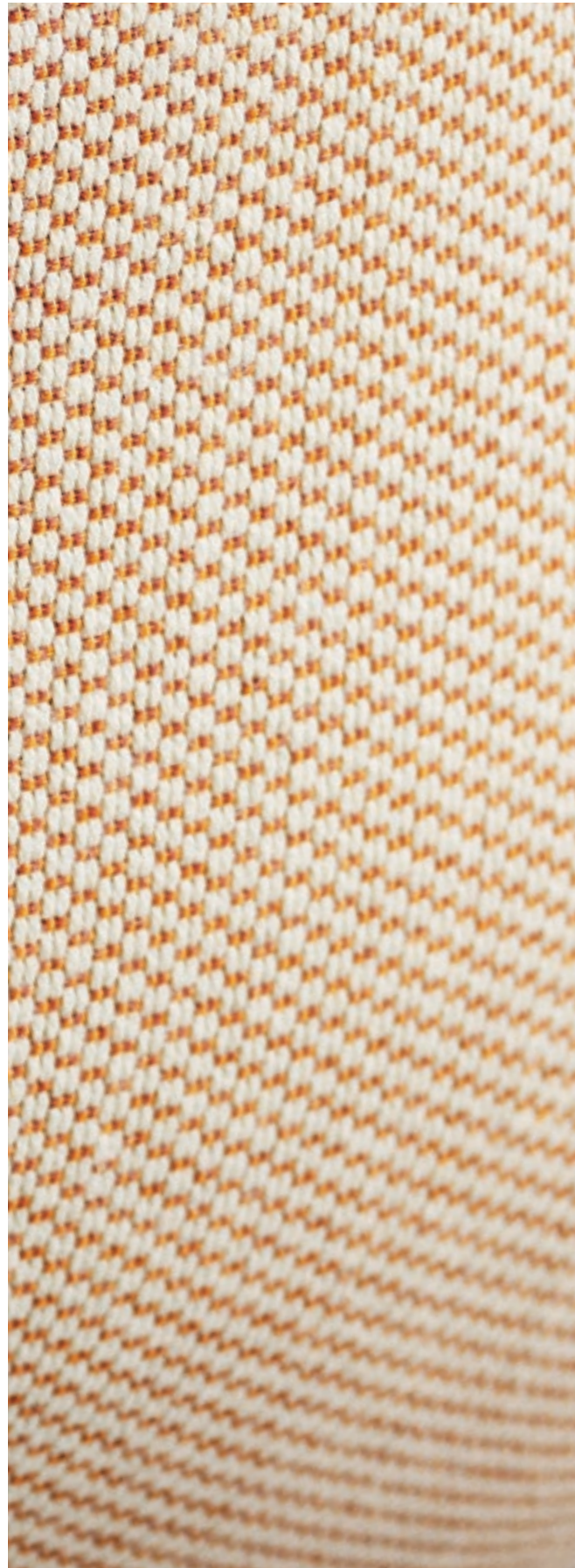
012



014

SERPENTINE  
*By Kvadrat*

The voluminous woollen upholstery features dynamic colour interactions and distinctive tactility, inspired by traditional double Ikat weaves and Mexican colours. It is suitable for a wide range of commercial and residential applications due to its innovative construction and strong functional performance.




---

PRICE CATEGORY  
3

---

MATERIALS  
98% New Wool  
2% Nylon

---

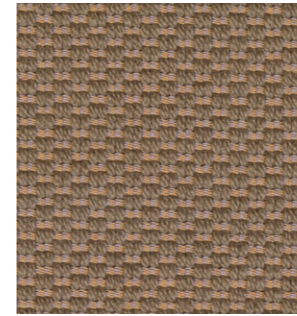
MARTINDALE  
45.000

---

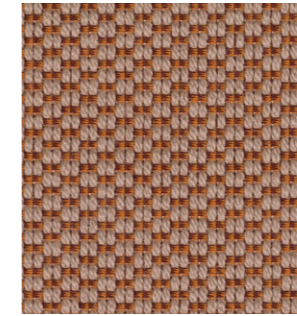
LIGHTFASTNESS  
5-7

---

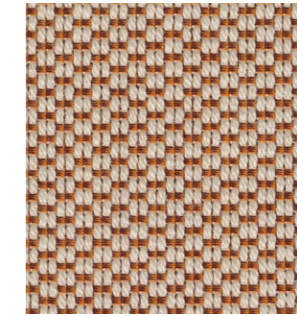
PILLING  
3-4



0238



0438



0428

VIDAR 4  
by Kvadrat



Distinguished by its tightly woven structure and nubby quality, the woollen Vidar 4 upholstery fabric has an inviting, comfortable texture that evokes images of a favourite knit. The weave's soft surface offsets the deep, shadowy tones within, lending a multifaceted richness to each colour option.

---

PRICE CATEGORY  
3

---

MANUFACTURER  
Kvadrat

---

MATERIALS  
94% New Wool  
6% Nylon

---

DURABILITY  
100.000 Martindale

---

LIGHTFASTNESS  
7 (ISO 1-8)

---

PILLING  
4 (ISO 1-5)

---

C&M (BS5852-0/1)  
Yes

---

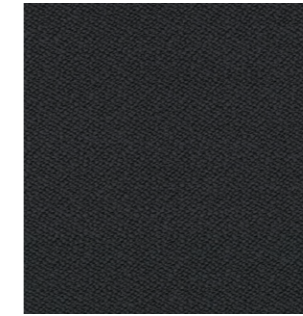
CAL 117  
Yes

---

CRIB 5 (BS5852-5)  
No - Cannot be treated



0146



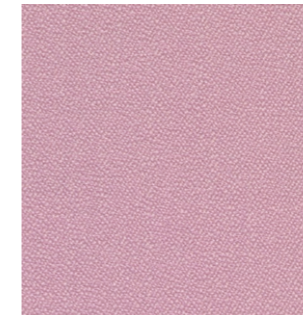
0182



0323



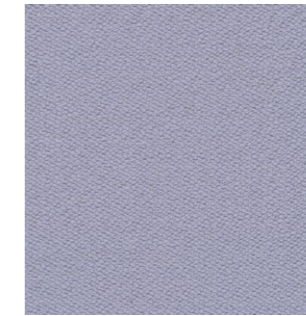
0333



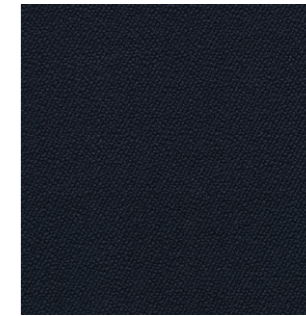
0526



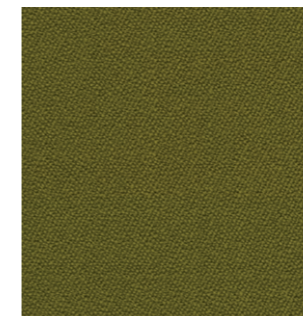
0693



0723



0786



0956

## *Textile Category 4*



GRAND MOHAIR  
*by Danish Art Weaving*

A premium choice for upholstery, thanks to its comfort, durability and aesthetic appeal, Grand Mohair is spun from the fleece of the Angora goat, revered for its luxurious natural appeal. Exceptionally soft to the touch and resistant to wear and tear, its inherent lustre creates a sophisticated appearance.



1103



2600



8205

---

PRICE CATEGORY  
4

---

MANUFACTURER  
Danish Art Weaving

---

MATERIALS  
100% Mohair

---

DURABILITY  
200.000 Wyzenbeek

---

LIGHTFASTNESS  
4,5 (ISO 1-8)

---

PILLING  
5 (ISO 1-5)

---

C&M (BS5852-0/1)  
Yes

---

CAL 117  
Yes

---

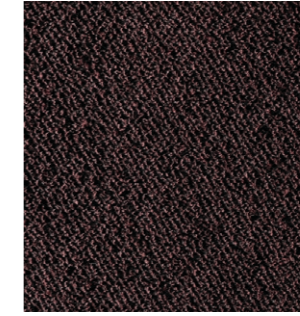
CRIB 5 (BS5852-5)  
Yes

LUPO  
*by Dedar*

Characterised by its looped yarns, the flame-resistant Lupo bouclé is a dense and durable upholstery fabric with a high resistance to wear and tear. Its tactile surface adds visual interest and a soft quality to furniture, making it a comfortable choice for a range of applications.



T19028\_004



T19028\_005



T19028\_008

---

PRICE CATEGORY  
4

---

MANUFACTURER  
Dedar

---

MATERIALS  
74% Polyester Trevira CS  
26% Polyester FR

---

DURABILITY  
80.000 Martindale

---

LIGHTFASTNESS  
4-5 (ISO 1-8)

---

C&M (BS5852-0/1)  
Yes

---

CAL 117  
Yes

---

CRIB 5 (BS5852-5)  
No - Can be treated

AUDO UPHOLSTERY PROGRAMME  
*Leather*

The Audo upholstery programme shows an overview of our textile and leather standard programme. All textile and leather collections are available in all colours.

Please note that the colour references are only intended as a guide. For further information please see manufacturer websites, or contact your local Audo sales representative.

Selection of textiles or leather outside of our upholstery programme, is subject to final testing and approval. Additional deliverytime may also occur.

SORENSENLEATHER.COM  
NEVOTEX.COM  
CA-MO.COM  
SKANDILOCK.COM



# LEATHER UPHOLSTERY SELECTION & FURNITURE

Use table to determine the upholstery options available for fabric-covered items.

- TESTED AND APPROVED.
- NOT TESTED, BUT PRE-APPROVED BY SUPPLIER

PRICE CATEGORY 0	AFTERROOM	BRASILIA	CO CHAIR	HARBOUR CHAIR	HARBOUR LOUNGE CHAIR	INGEBORG	KNITTING CHAIR	MERKUR	MINGLE	MY OWN CHAIR	PASSAGE	READY	THE TIRED MAN	VILHELM	THE PENGUIN	ELIZABETH	THE SEAL
SIERRA, CAMO	●		●	●	●			●			○	●					
PRICE CATEGORY 1																	
DAKAR, NEVOTEX	●	●	●	●	●	○	○	●		○	○	●	○	○	●	●	●
ENVY, SØRENSEN LEATHER	○	○	○			○	○	○	○	○	○	○	○	○	○	○	○
ULTRA, SØRENSEN LEATHER	●	●	●	●	●	○	○	●		○	○	●	○	○	○	○	○
ULTRA CRIB 5, SØRENSEN LEATHER	●	●	●	●	●	○	●	○		○	○	●	○	○	○	○	○
PRICE CATEGORY 2																	
DUNES, SØRENSEN LEATHER	●	●	●	●	○	○	○	●		○	○	●	○	○	●	●	●
NUANCE, SØRENSEN LEATHER	●	○	●	●	○	○	○	○		○	○	○	○	○	○	○	○
PRICE CATEGORY 3																	
SHEEPSKIN CURLY, SKANDILOCK						●			●	●			●	●			
SHEEPSKIN CURLY, NEVOTEX		●					●										

*Leather Category 0*

A corrected leather with a printed surface, Sierra features a uniform appearance that requires minimal maintenance. Ideal for high-traffic areas, the long-lasting material is manufactured without environmentally harmful substances like PCP and CFC. Compliant with the REACH declaration, it adheres to all standards and limits for chrome VI.

---

PRICE CATEGORY  
0

---

MANUFACTURER  
Camo

---

MATERIALS  
Corrected leather

---

THICKNESS  
0.9 – 1.1 mm

---

MATERIALS  
100 % Corrected Leather

---

LIGHTFASTNESS  
≥4 (ISO 1-8)

---

TEARING STRENGTH  
≥20 N

---

FLEXING RESISTANCE  
50.000 cycles

---

C&M (BS5852-0/1)  
Yes

---

CAL 117  
Yes

---

CRIB 5 (BS5852-5)  
No



1611 STONE



0441 ARMY



1058 OCEAN BLUE



1279 HAZE



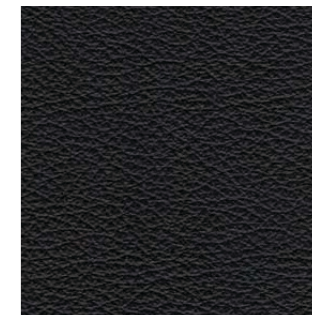
1053 TOFFEE



1513 KELATO WHISKY



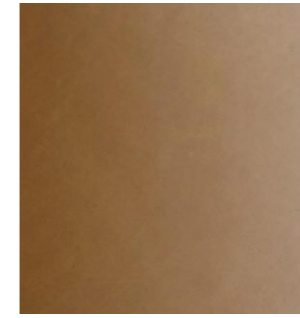
1015 DARK BROWN



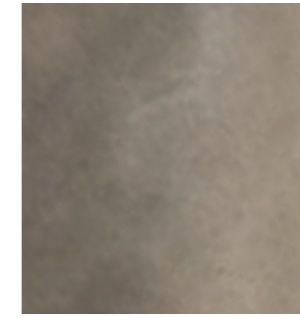
1001 BLACK

*Leather Category 1*

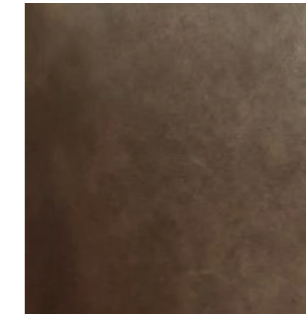
This chrome- and vacuum-tanned, full-grain aniline leather has a waxed surface for an exceptionally soft touch and a glossy finish that highlights its natural texture. Becoming more comfortable over time, it provides a supportive and cosy seating experience and develops a distinctive patina that adds character and uniqueness to each piece of furniture. Leather Standard by Oeko-Tex® certified.



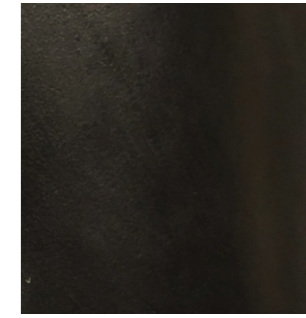
0250 COGNAC



0311 ANTILOP



0329 BROWN



0842 BLACK

---

PRICE CATEGORY  
1

---

MANUFACTURER  
Nevotex

---

MATERIALS  
100 % Aniline Leather

---

LIGHTFASTNESS  
3 (ISO 1-8)

---

TEARING STRENGTH  
≥20 N

---

FLEXING RESISTANCE  
30.000 cycles

---

CAL 117  
Yes

---

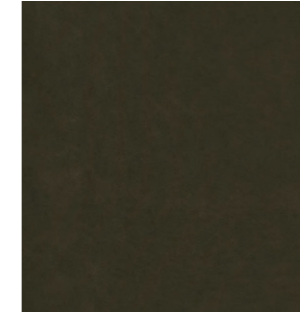
CRIB 5 (BS5852-5)  
No



Smooth to the touch and with a subtle surface sheen, Envy is an elegant aniline leather with subtle natural markings, artfully minimised through a special sanding process. The addition of a light, transparent wax further enhances surface protection, resulting in a delightful feel and a brilliant sense of depth. Leather Standard by Oeko-Tex® certified.



NOUGAT - 20322



OLIVE - 20324

---

PRICE CATEGORY  
1

---

MANUFACTURER  
Sørensen Leather

---

MATERIALS  
100 % Aniline Leather

---

LIGHTFASTNESS  
>3 (ISO 1-8)

---

TEARING STRENGTH  
≥20 N

---

FLEXING RESISTANCE  
Non applicable

---

C&M (BS5852-0/1)  
Yes

---

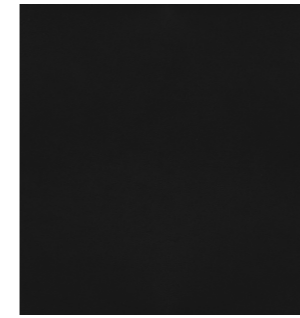
CAL 117  
Yes

---

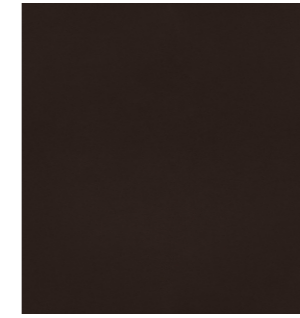
CRIB 5 (BS5852-5)  
No

ULTRA  
*by Sørensen Leather*

A versatile protected leather ideal for everyday use, Ultra has a buffed, embossed texture for a tactile feel. Its uniform grain pattern across the entire hide ensures a consistent look, and a protective finish ensures Ultra is easy to maintain and retains its original appearance for an extended period, resisting signs of aging or fading.



BLACK - 41599



CHOCOLATE - 41589



BRANDY - 41574



CAMEL - 41571

---

PRICE CATEGORY  
1

---

MANUFACTURER  
Sørensen Leather

---

THICKNESS  
0.9 – 1.1 mm

---

MATERIALS  
100% Protected Leather

---

LIGHTFASTNESS  
>5 (ISO 1-8)

---

TEARING STRENGTH  
≥20 N

---

FLEXING RESISTANCE  
50.000 cycles

---

CAL 117  
Yes

---

CRIB 5 (BS5852-5)  
No

ULTRA CRIB 5  
by Sørensen Leather

Featuring a uniform grain structure across the entire hide, Ultra Crib5 offers a uniform appearance, buffed and embossed for a tactile finish. The leather is water repellent, stain-resistant and easy to maintain thanks to its robust protective finish that extends the lifespan.

Available only in the UK, this versatile protected leather is designed to meet stringent flammability requirements, assuring reliability in high-risk environments.



41611



41612



41614



41616

---

PRICE CATEGORY  
1

---

MANUFACTURER  
Sørensen Leather

---

THICKNESS  
0.9 – 1.1 mm

---

MATERIALS  
100% Protected Leather

---

LIGHTFASTNESS  
>5 (ISO 1-8)

---

TEARING STRENGTH  
≥20 N

---

FLEXING RESISTANCE  
50.000 cycles

---

CAL 117  
Yes

---

CRIB 5 (BS5852-5)  
Yes

## *Leather Category 2*

DUNES  
*by Sørensen Leather*

An exclusive aniline leather characterised by its natural, unrefined appearance, Dunes® achieves its luxurious velvety touch through sanding and a special leather oil application. Its matte finish exudes raw elegance, accentuated by unique natural markings that lend individuality to each hide. Patinating through usage and exposure to light, Dunes becomes shinier and smoother over time.



ANTHRAZITE - 21003



COGNAC - 21000

---

PRICE CATEGORY  
2

---

MANUFACTURER  
Sørensen Leather

---

THICKNESS  
1.1 – 1.3 mm

---

CERTIFICATE  
Nordic Swan Ecolabel

---

MATERIALS  
100% Aniline Leather

---

LIGHTFASTNESS  
3 (ISO 1-8)

---

TEARING STRENGTH  
≥20 N

---

FLEXING RESISTANCE  
20.000 cycles

---

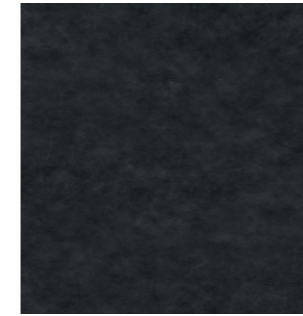
CAL 117  
Yes

---

CRIB 5 (BS5852-5)  
No - Cannot be treated

NUANCE  
*by Sørensen Leather*

Nuance boasts a remarkable depth and dimension that radiates authenticity while offering durability. With its sumptuous, tactile feel, the protected leather is nuanced in both texture and tone, retaining the natural patterns and imperfections inherent to each hide. An invisible coating preserves the softness and protects against wear and tear.



BURNED GREY - 40783



LIGHT GREY - 40782

---

PRICE CATEGORY  
2

---

MANUFACTURER  
Sørensen Leather

---

MATERIALS  
100% Protected Leather

---

THICKNESS  
1.1 – 1.3 mm

---

MATERIALS  
100% Aniline Leather

---

LIGHTFASTNESS  
>5 (ISO 1-8)

---

TEARING STRENGTH  
≥20 N

---

FLEXING RESISTANCE  
50.000 cycles

---

CAL 117  
Yes

---

CRIB 5 (BS5852-5)  
No

## *Leather Category 3*

SHEEPSKIN  
*by Skandilock*



---

PRICE CATEGORY  
3

---

MANUFACTURER  
Skandilock

---

MATERIALS  
Sheepskin

---

THICKNESS  
17 mm



OFF WHITE



SAHARA



MOONLIGHT



HONEY



ESPRESSO



GREEN TEA



SHEEPSKIN  
*by Nevotex*



---

PRICE CATEGORY  
3

---

MANUFACTURER  
Nevotex

---

MATERIALS  
Sheepskin

---

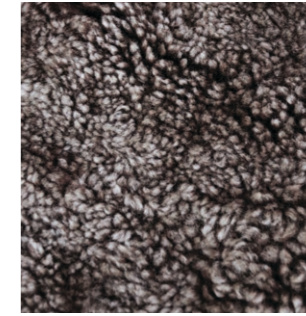
THICKNESS  
17 – 21mm



NATURE



SAHARA



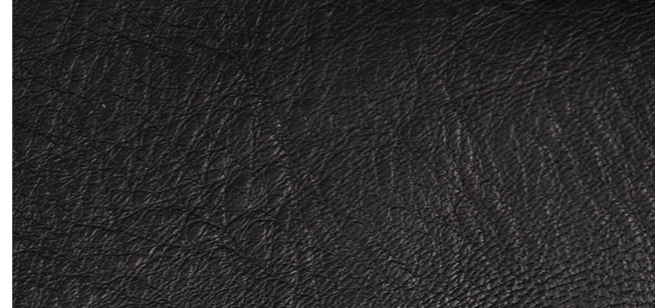
ROOT

## NATURAL MARKINGS ON LEATHER

Individual and unique markings may appear on the leather and should not be considered as defects.



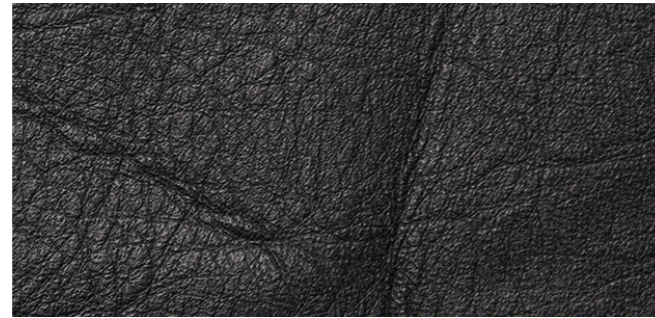
FAT WRINKLES



SCAR / INSECT BITES



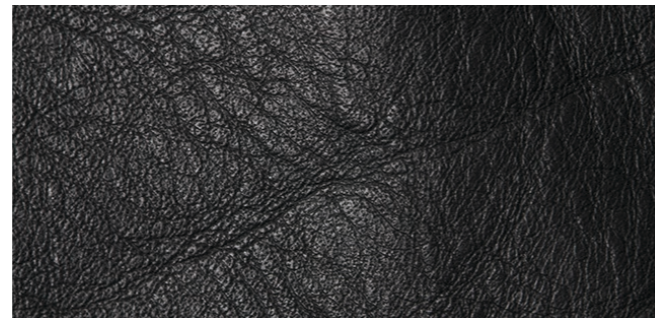
FOLDS



BUTCHING SCAR



HEALED SCARS



FAT WRINKLES

