

Blanket

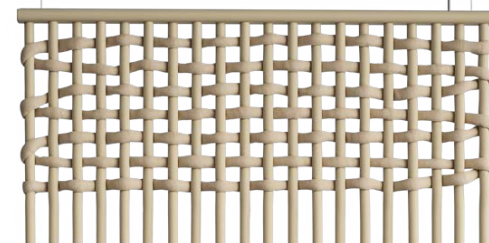
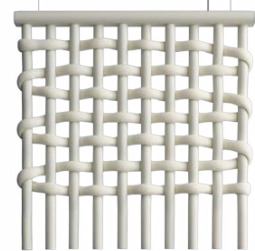
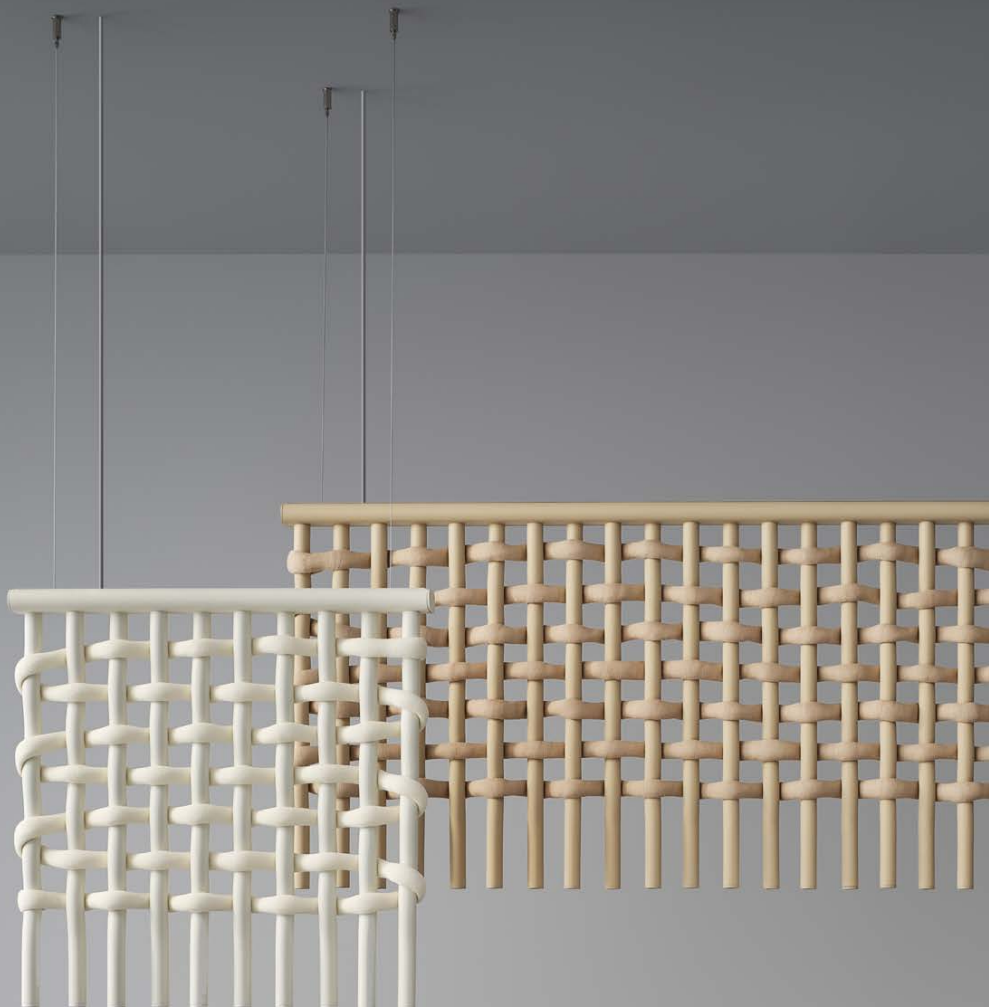
Original lamp form resembles weaved fabric, but magnified to gigantic scale. Fabric's "warp" is made of bent aluminium tubes, and "weft" is made from thick, foam enhanced wool.

It's oversized structure was chosen specifically to divide space optically and acoustically. Areas divided by the lamp are not closed off completely, space can be sensibly manipulated, giving more privacy where it's needed.

Metal used for construction can be completely recycled.

The fitting comes preassembled, despite its large size, it is flat, which makes it easy to stack during transport.

The packaging is made of cardboard, and can be completely recycled.



Blanket

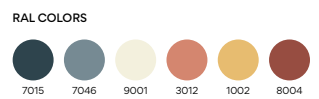
EN

The lamp resembles fabric in texture but it has been enlarged to a giant scale. The "warp" is made of folded aluminum tubes and the "weft" is made of thick wool fortified with foam. This overscaled lighting design has been specially chosen to allow for the division of optical and acoustic space. At the same time, it does not close the space completely, because it is open-work. When dimmed, it can be used to provide mood lighting in spaces for relaxing.

DE

Die Lampe erinnert in ihrer Struktur an Gewebe, jedoch in einen gigantischem Maßstab vergrößert. Der „Kettfaden“ des Gewebes besteht aus gebogenen Aluminiumrohren und der „Schuss“ aus dicker, mit Schaumstoff angereicherter Wolle. Diese maßstabsgetreue Beleuchtungsstruktur wurde gezielt gewählt, um eine optische und akustische Teilung des Raumes zu ermöglichen. Gleichzeitig verschließt sie ihn nicht vollständig, da sie durchbrochen ist. Gedimmt kann sie als Stimmungslicht in Chill Out-Zonen eingesetzt werden.

system power	15W Blanket 1195 x 595
	30W Blanket 595 x 595
color temperature	3000K
	4000K
electrical control	ON / OFF
	DIMM DALI
housing color	RAL color palette
mounting type	pendant
IP	IP20
CRI	>80
UGR	<19



* Original product colors may vary from those illustrated.

