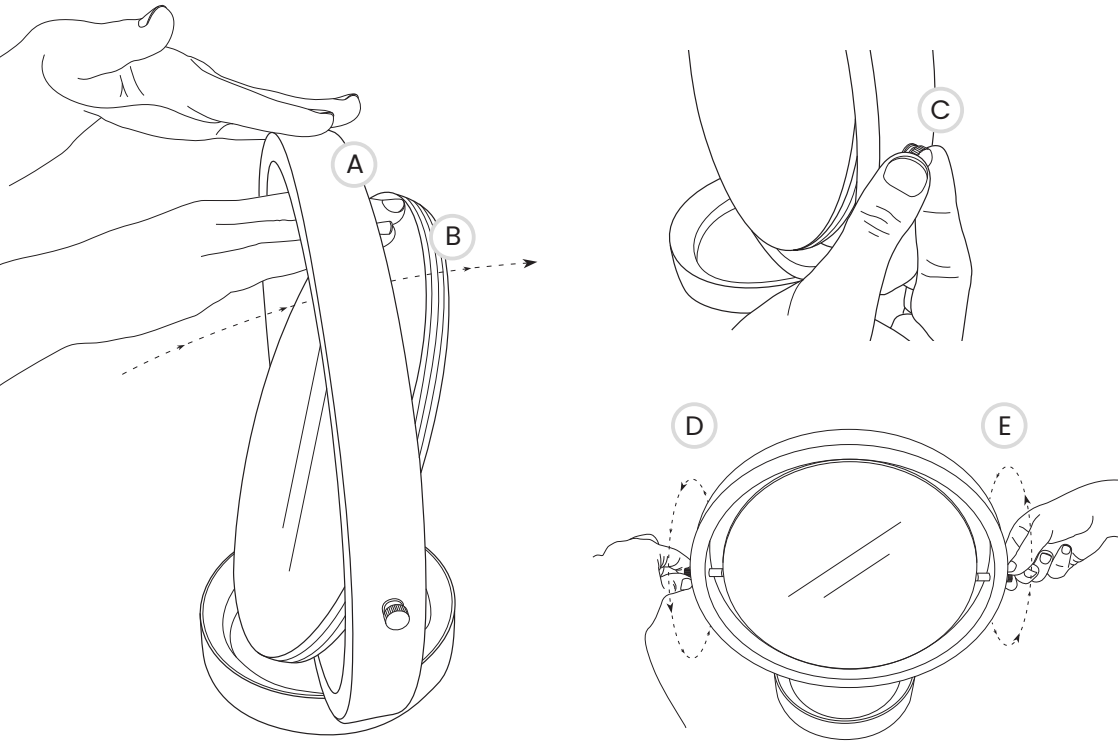


Rosella Mirror Instructions/Care Guide



The Rosella Mirror has been designed to tilt within its steam bent ash hoop to any desired angle. To do this, place one hand firmly on the top of the hoop (A) and gently push the mirror to the chosen angle (B).

The tilting mechanism of the mirror has been pre set to a chosen level of resistance so that it stays at any angle it is positioned to. If, however the mechanism becomes looser over time, the brass thumb screws either side of the hoop (C) can be turned to re-tighten the mechanism. Turn each of the thumb screws clockwise (D) and (E) until you feel resistance. This should ensure the mirror stays in the desired position.

The Rosella Mirror should be cleaned to prevent dust build up and to remove fingerprints. Use a soft, dry duster first, then spray the glass with window/glass cleaner and buff away with a microfibre cloth, making sure no surfaces are left wet.