



The iconic 121 Scarpa dining chair is a straightforward dining chair with a design that can complement both classical and cutting-edge interiors.

The design is characterized by a firm and robust wooden frame that creates a striking contrast to the lightness of the seat and back. The seat and back are anatomically shaped in plywood, covered in fine European leather, and attached by bolts to crosspieces along the center for great comfort. Originally inspired by a sketch made by Tobia's father, Venetian architect and designer, Carlo Scarpa, the 121 came to life with a distinct touch from Afra and Tobia Scarpa in 1965.

The 121 Scarpa dining chair was designed alongside the classic 925 Scarpa lounge chair from 1966. The two chairs are a prime example of Afra and Tobia Scarpa's work and share the same double trestle structure with characteristic rounded joints. Both designs are now a part of the Karakter collection.

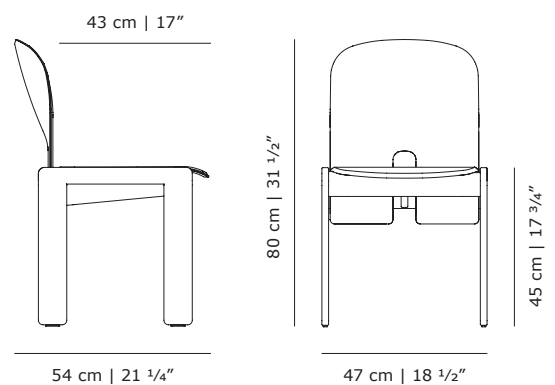
PRODUCT DATA

Design	Afra & Tobia Scarpa. 1965
Product type	Dining chair
Environment	Indoor
Materials	Frame in solid ash, upholstery in saddle leather, plastic glides

CAL.117

CAL.117 foam

LIST \$2,995

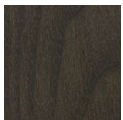




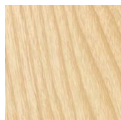
Scarpa 121

Frames and upholstery

Frames

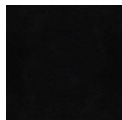


Solid ash
mocca stained



Solid ash
natural

Upholstery - Cassina saddle leather



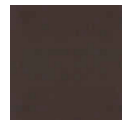
Nero



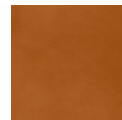
Rosso Bulgaro



Naturale



Marrone



Cognac