

# ChargePort Pro US | TA-7820US



# Desktop Mounting Plate - Screw Fixing



1. Mounting plate pack includes 2 small black screws and 2 larger black screws.



2. Install the black metal base plate in the desired location on the desktop using the 2 larger screws.



3. Finally, locate the ChargePort Pro on the mounting plate and then use the 2 small black screws to secure the ChargePort Pro to the mounting plate.

## Desktop Mounting Plate - Screw Fixing



1. Mounting plate pack includes 2 small black screws and mounting plate with attached adhesive pad.



2. Use the 2 small screw to attach the mounting plate to ChargePort Pro.



3. Remove the protective paper from the adhesive pad and locate the ChargePort Pro on the desk. Press down firmly with your hands to ensure good adhesion.

## Cable Clamp



1. Carefully place the cable clamp over the mains lead and secure to a suitable surface with screw provided.

## Security Lanyard

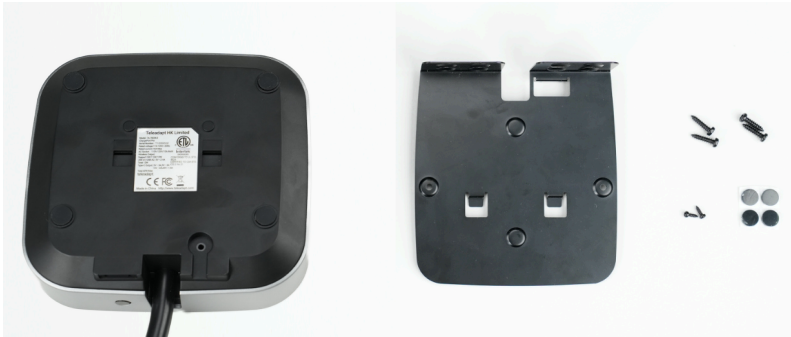


1. Secure one end of the lanyard to the ChargePort Pro using the screw provided.



2. Attach the free end of the lanyard to the furniture as required with the other screw.

## Desktop Mounting Plate - Rear Fixing (not supplied, cost option)



1. Mounting plate pack includes 2 small black grub screws and 4 larger black woodscrews.



2. Locate the bracket on the base of the ChargePort Pro and secure to the rear using the two supplied grub screws.



3. Finally, fix the bracket to the rear of the desk using the 4 woodscrews provided. Select the most appropriate holes that align with your furniture.



Visit our website at: [www.teleadapt.com](http://www.teleadapt.com)

TA-7820US-xxxx, ChargePort Pro Mounting Options Revision 1.18, 2025-03-19.  
All rights reserved. All copyrights and trademarks acknowledged.  
Specifications subject to change without notice.