

by Lassen.
Copenhagen



PRODUCT SHEET

Ingeborg, Lounge Chair
by Flemming Lassen

Ingeborg, Lounge Chair

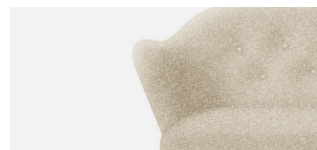
BY FLEMMING LASSEN

Originally Ingeborg was designed in 1940 by Flemming Lassen. The chair was designed by Master carpenter Jakob Kjær, who manufactured Flemming Lassen's furniture for The Carpenters guild Annual Furniture Exhibition. The charming little easy chair is named after Flemming and Mogens Lassen's mother, the artist Ingeborg Winding. Despite its petite size, Ingeborg brightens any room with its charm and exclusive style. Ingeborg looks beautiful from all angles. It can be placed anywhere in a room without taking up too much space.

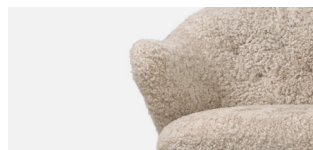


PRODUCT OPTIONS

SEAT



WITH UPHOLSTERY



WITH SHEEPSKIN

BASE



NATURAL OAK



DARK STAINED OAK

SPEC OPTIONS

Available in fabrics from our upholstery programme. Standard lead times apply.

For custom upholstery, please refer to the guiding textile/leather consumption:

COM: 2,6 m / 2,86 yds

COL: 3,8 m² / 40,926 sqft

Prices excl. custom upholstery are equal to Price Category 1 Textile or Leather. Contact Sales support for approval of custom upholstery and to place your order.

The above textile consumption is only valid for textile rolls with a width equal to or greater than 140 cm. For smaller textile rolls, please contact Sales Support for guidance. For textile with pattern, please expect a higher usage for correct pattern fitting. Please contact Sales Support for guidance.

Ingeborg, Lounge Chair

BY FLEMMING LASSEN

TECHNICAL SPECIFICATIONS

PRODUCT TYPE

Lounge chair

COLLI

1

ENVIRONMENT

Indoor

DIMENSIONS

H: 76 cm / 29,9"

SH: 40 cm / 15,7"

W: 76 cm / 29,9"

D: 81 cm / 31,9"

COLOUR

Seat

Dependent upon selected upholstery

Base

Natural oak

Dark stained oak

MATERIALS

Oak, plywood, webbing / belts, foam, wadding, steel

WEIGHT

15 kg / 33,07 lb

TEST

N / A

CERTIFICATIONS

N / A

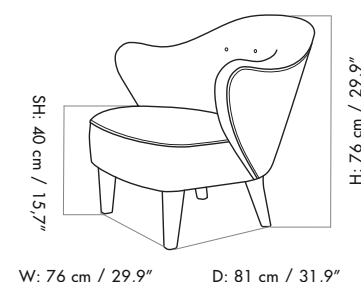
PACKAGING TYPE

Brown box

PACKAGING MEASUREMENTS (H x W x D)

80 cm x 81 cm x 85 cm / 31,5" x 31,9" x 33,5"

MATERIALS & MAINTENANCE

Please visit [menuspace.com](https://www.menuspace.com) for materials, care and maintenance instructions.

W: 76 cm / 29,9"

D: 81 cm / 31,9"