

ABOUT A COLLECTION NEWS

100% RECYCLED POST-CONSUMER PLASTIC



Design by Hee Welling

HAY

About A Collection New Colours

Designed for HAY by Hee Welling, the iconic About A Chair and Stool collection is a multi-functional family of chairs and stools connected around one simple, strong idea, while still retaining the individual qualities of each model.

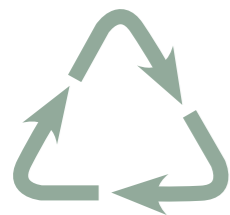
This season sees the About A Chair collection updated in a wide palette of contemporary new colours, with HAY's characteristically fresh and playful approach to colour ensuring the collection remains ever relevant with endless interplay and combination possibilities. Respectfully recreated in new materials, the entire range has been updated with all shells now made from 100% recycled post-consumer plastic. In addition to numerous colours, the collection is also available in multiple textile options, giving the About A Chair collection a versatile expression that makes it suitable for a wide variety of private or public environments.



About A Chair | New colours



About A Chair 222 Family



Recycled plastic

With the objective of recreating HAY's iconic About A Chair and About A Stool Collection to reduce the impact on the environment, all the shells are made from 100% recycled post-consumer plastic derived from household waste, like televisions and washing machines. The plastic is collected, sorted and cleaned in recycling programmes, before being reprocessed into About A Collection shells.

[Link to AAC/AAS video](#)



About A Chair Family



Throughout a high technological process the granulates are crushed, cleaned and sorted.







AAS 32 | Teal green 2.0 shell, WB lacquered oak base & Stainless steel footrest



AAC 12 | White 2.0 shell & WB lacquered oak base



About A Chair 200 Family



AAC 50 | Raisin 2.0 shell & Polished aluminium base



AAC 220 | Dusty mint 2.0 shell & Polished aluminium base



AAC 20 | Soft brick 2.0 shell & Black aluminium base



AAC 220 | Fall green 2.0 shell & Black aluminium base



AAC 220 | Black 2.0 shell & Black aluminium base

About A Collection

New Colours

Highlights

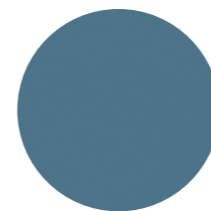
- About A Chair and Stool Collection updated in a wide palette of new contemporary colours
- Introducing nine new colours in fresh, playful tones and seven existing bestselling colours
- All shells are now made from 100% recycled post-consumer plastic
- Post-consumer recycled plastic is material derived from household waste, like televisions and washing machines
- A majority of the unupholstered models are now certified with the EU Ecolabel across the whole chair and bar stool series
- Suitable for a wide variety of private and public environments.



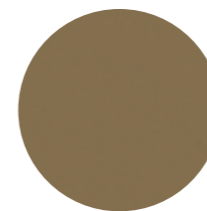


AAC & AAS 2.0 Colours

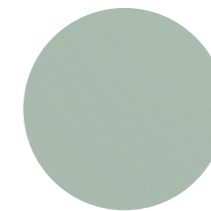
New Colours | 100% recycled plastic



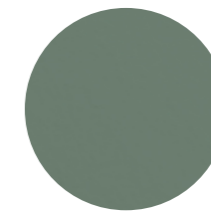
Azure blue



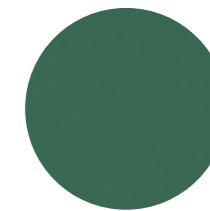
Clay



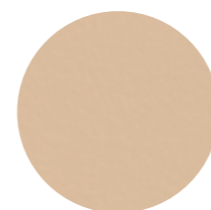
Dusty mint



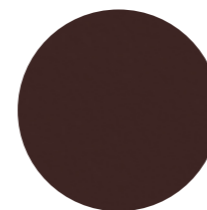
Fall green



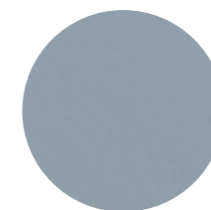
Teal green



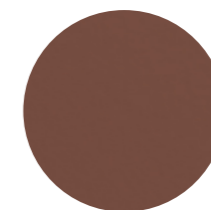
Pale peach



Raisin



Slate blue

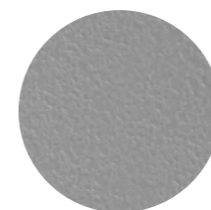


Soft brick

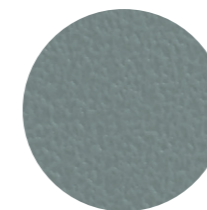


White

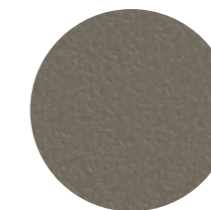
Existing Colours | 100% recycled plastic



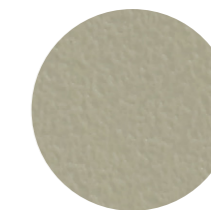
Concrete grey



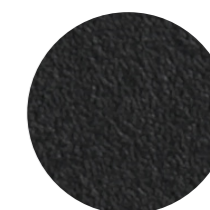
Dusty blue



Khaki



Pastel green



Black



Melange cream

ABOUT A CHAIR 200 FRONT UPHOLSTERY



HAY

About A Chair 200 Front Upholstery

In the most recent collaboration between HAY and designer Hee Welling, the AAC 200 series features a new partially upholstered shell that adds both versatility and comfort to the iconic chair design. Designed with optimal functionality in mind, the curved shell has a slightly higher back and a deep, generous seat, with the lower armrests offering good support, whilst enabling the chair to fit underneath a table or desk. Made in post-consumer recycled plastic, the AAC 200 series offers a variety of shell colours and front upholstery options, as well as different base types, making it a flexible and functional collection suited to a wide variety of domestic, office, and public settings.



AAC 220 | Front upholstery | White 2.0 & Mode 009
AAC 222 | Front upholstery | Clay 2.0 & Remix 242



AAC 222 | Front upholstery | Clay 2.0 & Remix 242



ABOUT A COLLECTION NEW SEAT PADS

HAY

About A Collection New Seat Pads

Designed to add extra comfort to the About a Chair and About a Stool series, a new collection of seat pads in new fabrics and colours has been developed to fit all models within the two series. The padded cushions feature non-slip backing and are available in different sizes.



AAC 222 | Dusty mint 2.0 shell
AAC Seat Pad | Planar 756



AAS 32 | Dusty blue 2.0 shell
AAS Seat Pad | Mode 002



AAC 12 | Pastel green 2.0 shell
AAC Seat Pad | Planar 756



AAC 222 | Soft brick 2.0 shell
AAC Seat Pad | Remix 356



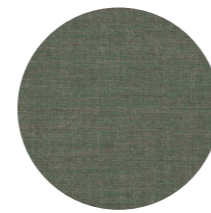
AAC 222 | Pale peach 2.0 shell
AAC Seat Pad | Haku 0201



AAS 38 | Azure blue 2.0 shell
AAS Seat Pad | Mode 002



AAC & AAS Seat Pad Colours



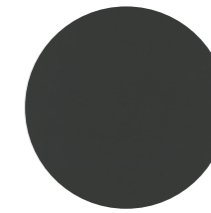
Atlas
931



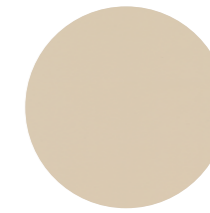
Tadao
200



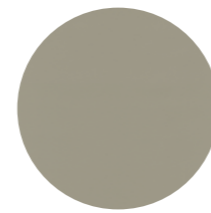
Haku
0101



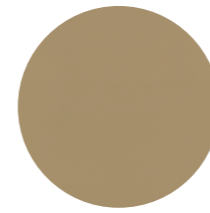
Haku
0191



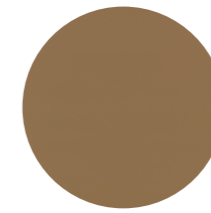
Haku
0201



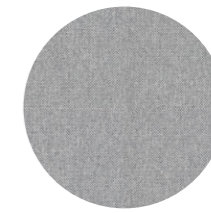
Haku
0241



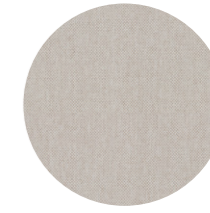
Haku
0321



Haku
0351



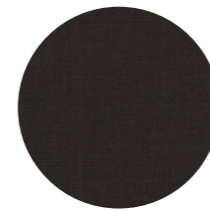
Mode
002



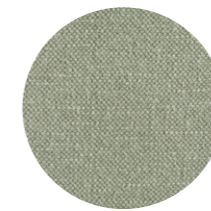
Mode
009



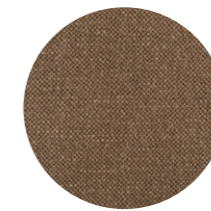
Remix
242



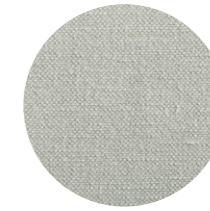
Remix
356



Planar
735



Planar
749



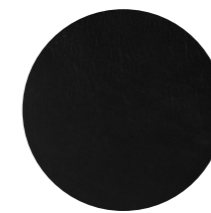
Planar
756



Planar
757



Scozia Leather
Cognac



Scozia Leather
Black

Please use link below to download other sales material of the AAC & AAS new colours, AAC 200 Front Upholstery and new Seat Pads, including packshots and lifestyle photos.

DIGITAL LIBRARY

Please use link below for order placement and further information.

HAYB2B.COM

Videos for training purposes. Not to be shared publicly on any websites or social media. Public videos will be available closer to launch.

INTERNAL TRAINING VIDEO

HAY

