

# FABRIC & LEATHER

OVERVIEW



# HAY FABRIC & LEATHER OVERVIEW

HAY's wide assortment of fabrics and leathers is offered in a good variety of textures, weaves, and colours, all carefully selected for their superior quality, expression, durability, strength, and functionality. All the fabrics are chosen for their ability to complement HAY's extensive assortment of furniture and can be used to cover chairs, stools, and sofas in many different domestic and contract environments.

In this overview you find colours and technical information about all fabrics and leathers in HAY's standard assortment. Furthermore you will find information about the upholstery possibilities for the different furniture models.

## CONTENT

### FABRIC GROUP 1

ATLAS .....	3
LINARA* .....	3
LINT* .....	3
METAPHOR .....	4
MODE .....	4
PLANAR* .....	5
RANDOM FADE .....	5
REMIX 3 .....	6
SURFACE BY HAY .....	6
SWARM .....	7
VALENCIA™ .....	7

### FABRIC GROUP 2

FAIRWAY .....	8
FIELD 2 .....	8
FLAMIBER* .....	8
LINEN GRID* .....	9
LOLA* .....	9
MAGLIA .....	9
MELANGE NAP .....	10
NICO .....	10
OLAVI BY HAY .....	11
OSUMI* .....	11
RELATE .....	11
STEELCUT 3 .....	12
STEELCUT TRIO 3 .....	12
TADAO .....	13

### FABRIC GROUP 3

COMPOUND .....	14
DOT 1682 .....	14
DIVINA 3 .....	15
DIVINA MD .....	15
DIVINA MELANGE 3 .....	16
FIORD 2 .....	16
RE-WOOL .....	17
RODEN* .....	17
RUSKIN* .....	17
STEELCUT QUARTET .....	18
TARTAGLIA .....	18

### FABRIC GROUP 4

BOLGHERI .....	19
CANVAS 2 .....	19
ENCIRCLE .....	19
HALLINGDAL 65 .....	20
ICE FR* .....	20
RAAS .....	21

### FABRIC GROUP 5

BALDER 3 .....	22
HAKU* .....	22
HARALD 3* .....	22
LOFT .....	23
SIERRA LEATHER .....	23

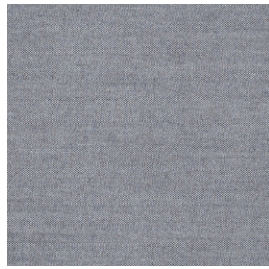
### FABRIC GROUP 6

CODA 2 .....	24
VIDAR 4 .....	24
CALIFORNIA LEATHER .....	25
NEVADA LEATHER* .....	25
SENSE LEATHER .....	25

### UPHOLSTERY MATRIX

CHAIRS .....	26
STOOLS & BAR STOOLS .....	31
LOUNGE .....	32
SOFAS .....	34

# FABRIC GROUP 1



## ATLAS

Kvadrat  
Design by Margrethe Odgaard

**COMPOSITION**  
90% New wool  
(worsted),  
10% Nylon

**DURABILITY**  
100.000 Martindale

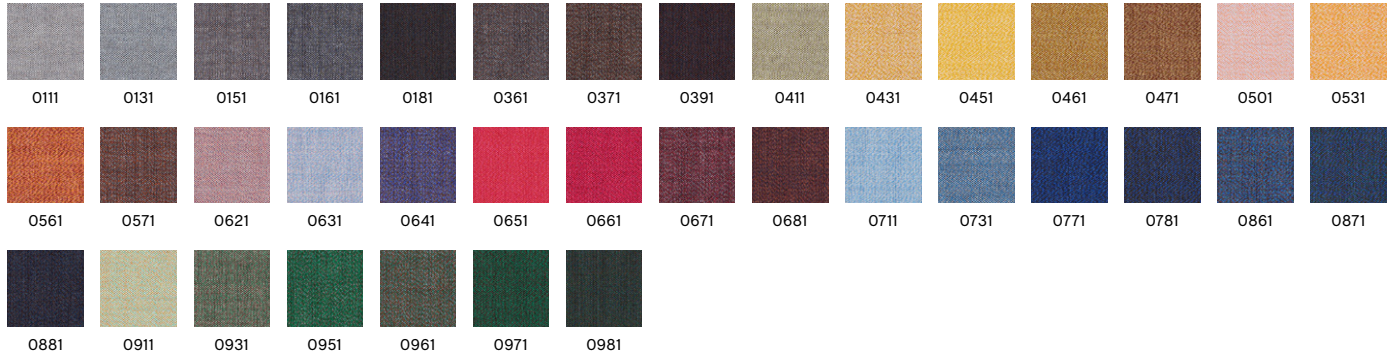
**LIGHTFASTNESS**  
6-7

**PILLING**  
4-5

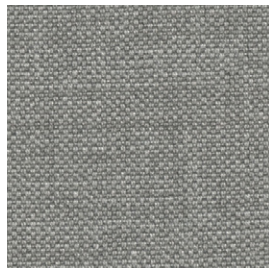
**FIRE TESTS\***  
EN 1021-1/2  
US Cal. Bull. 117-2013  
BS 5852 Crib 5 with  
treatment

**SUSTAINABILITY**  
EU Ecolabel  
Greenguard Gold  
HPD  
EPD

0131



Recommended for contract use  
\*Find more tests and information at kvadrat.dk



## LINARA\*

Romo

**COMPOSITION**  
63% Cotton,  
37% Linen

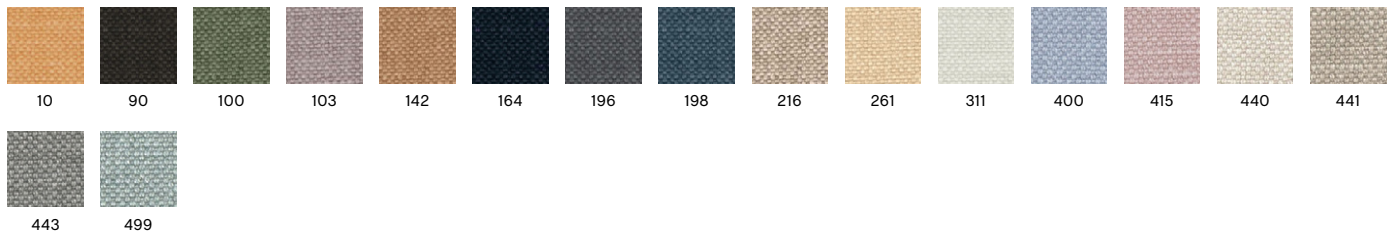
**DURABILITY**  
36.000 Martindale

**LIGHTFASTNESS**  
5-6

**PILLING**  
4

**FIRE TESTS**  
EN 1021-1/2 with FR  
treatment  
US Cal. Bull. 117-2013  
BS 5852 Crib 5 with  
treatment

443



\*Only available in selected colours



## LINT\*

HAY  
Cotton Linen 2

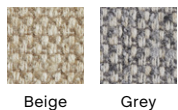
**COMPOSITION**  
40% Acrylic, 28%  
Cotton, 19% Viscose,  
8% Linen, 5%  
Polyester

**DURABILITY**  
18.000 Martindale

**LIGHTFASTNESS**  
5

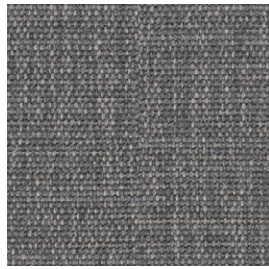
**PILLING**  
2-3

Grey



\*Not available in UK

# FABRIC GROUP 1



## METAPHOR

Maharam

COMPOSITION  
100% Polyester

DURABILITY  
90.000 Martindale

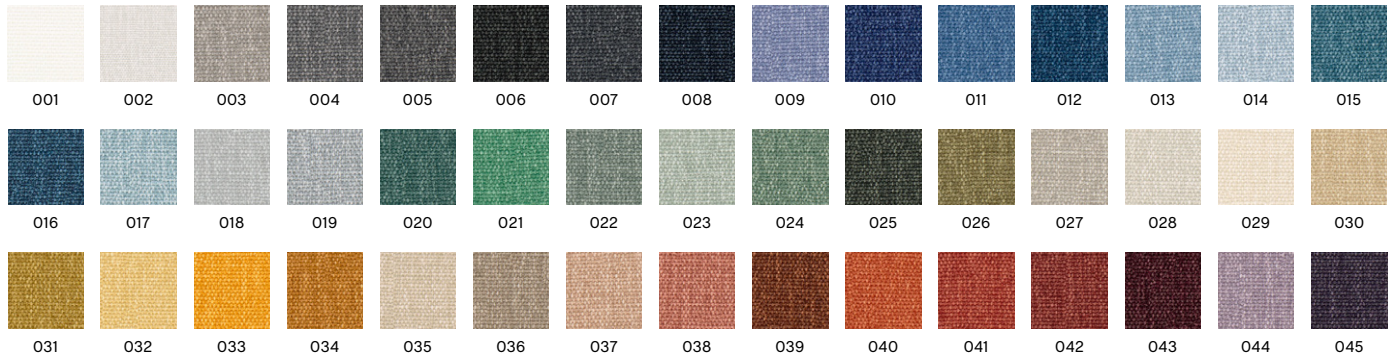
LIGHTFASTNESS  
5-6

PILLING  
3-4

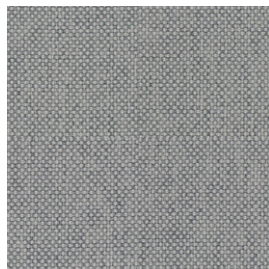
FIRE TESTS  
EN 1021-1/2 with  
FR treatment  
US Cal. Bull. 117-2013  
BS 5852 Crib 5 with  
treatment

SUSTAINABILITY  
Greenguard Gold  
FR Free

004



Recommended for contract use



## MODE

Maharam

COMPOSITION  
80% Post-Consumer  
recycled polyester,  
20% Polyester

DURABILITY  
100.000 Double rubs  
(Wyzenbeek)

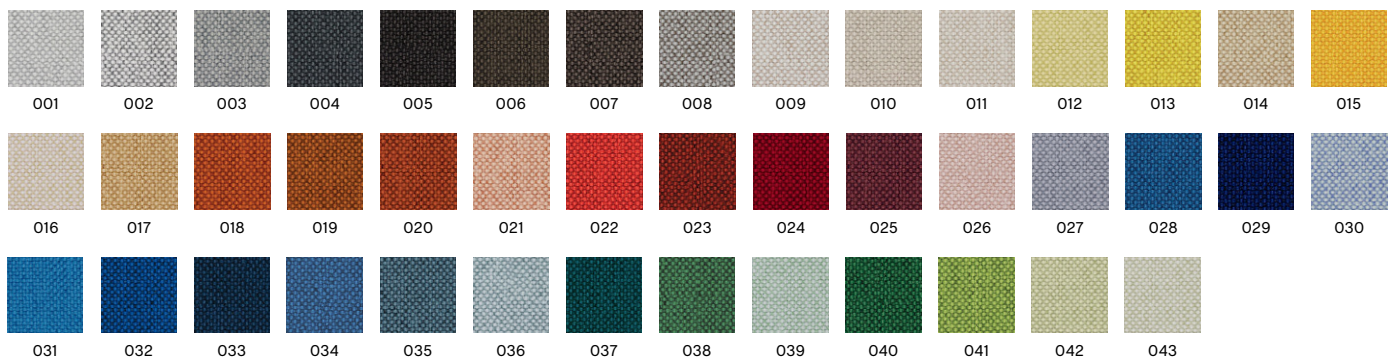
LIGHTFASTNESS  
40+ Hours

PILLING  
CLASS 4

FIRE TESTS  
EN 1021-1/2 with  
FR treatment  
US Cal. Bull. 117-2013  
BS 5852 Crib 5 with  
treatment

SUSTAINABILITY  
Greenguard Gold  
Contains Recycled  
Content  
FR Free

003



Recommended for contract use

# FABRIC GROUP 1



## PLANAR\*

HAY

**COMPOSITION**  
60% Cotton,  
40% Linen

**DURABILITY**  
40.000 Martindale

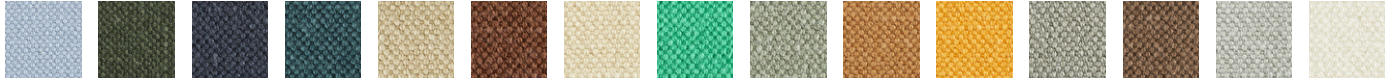
**LIGHTFASTNESS**  
5

**PILLING**  
4

**FIRE TESTS**  
US Cal. Bull. 117-2013

**SUSTAINABILITY**  
OEKO-TEX®  
STANDARD 100

747



366

722

725

726

728

729

731

732

735

739

745

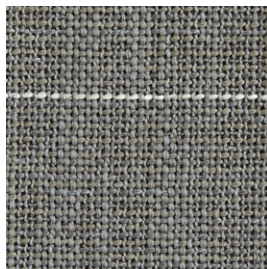
747

749

756

757

\*Not available in UK



## RANDOM FADE

HAY

Cotton Linen 2

**COMPOSITION**  
30% Acrylic, 25%  
Wool, 21% Polyester,  
14% Cotton, 10%  
Polyamide

**DURABILITY**  
35.000 Martindale

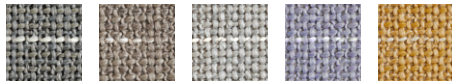
**LIGHTFASTNESS**  
5

**PILLING**  
3-4

**FIRE TESTS**  
EN 1021-1/2 with FR  
treatment

**SUSTAINABILITY**  
OEKO-TEX®  
STANDARD 100

Army



Army

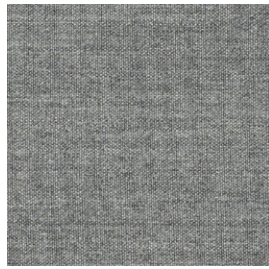
Beige

Light grey

Lilac

Yellow

# FABRIC GROUP 1



## REMIX 3

Kvadrat  
Design by Giulio Ridolfo

**COMPOSITION**  
90% new wool  
(worsted),  
10% nylon

**DURABILITY**  
100.000 Martindale

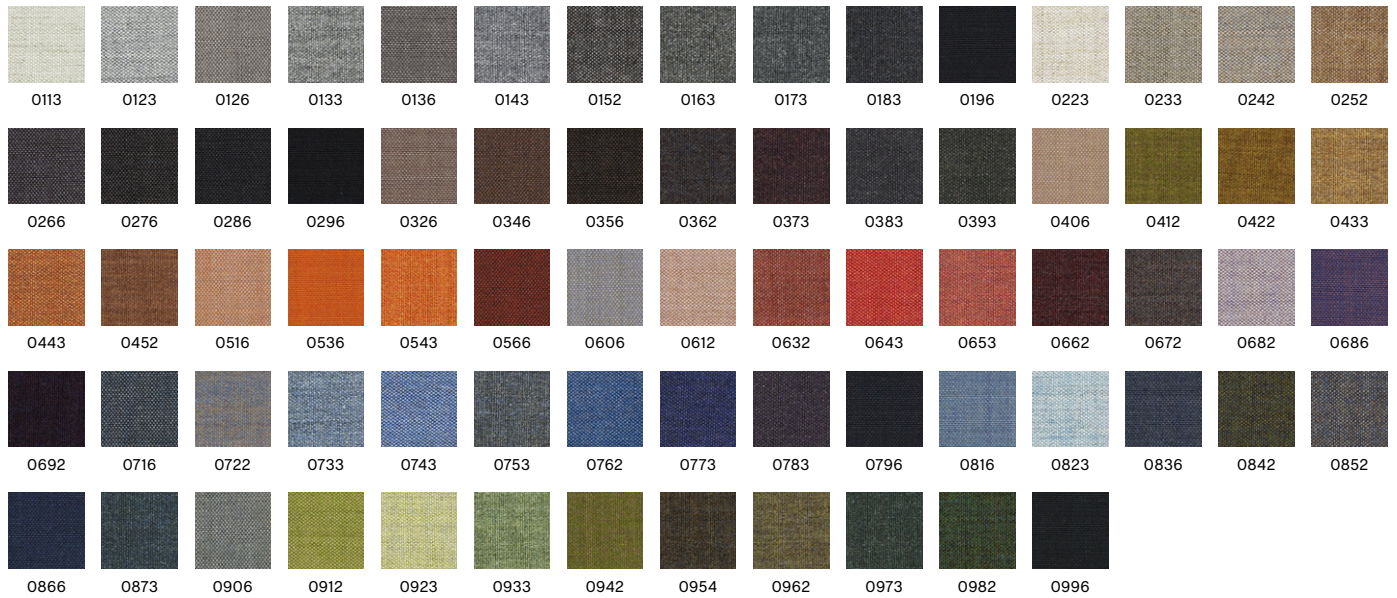
**LIGHTFASTNESS**  
5-7

**PILLING**  
4

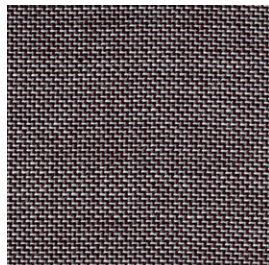
**FIRE TESTS\***  
EN 1021-1/2  
US Cal. Bull. 117-2013  
BS 5852 Crib 5 with  
treatment

**SUSTAINABILITY**  
EU Ecolabel  
Greenguard Gold  
HPD  
EPD

0133



Recommended for contract use  
\*Find more tests and information at kvadrat.dk



## SURFACE BY HAY

Kvadrat  
Design by Louise Sigvardt & HAY

**COMPOSITION**  
90% New wool  
(worsted),  
10% Nylon

**DURABILITY**  
100.000 Martindale

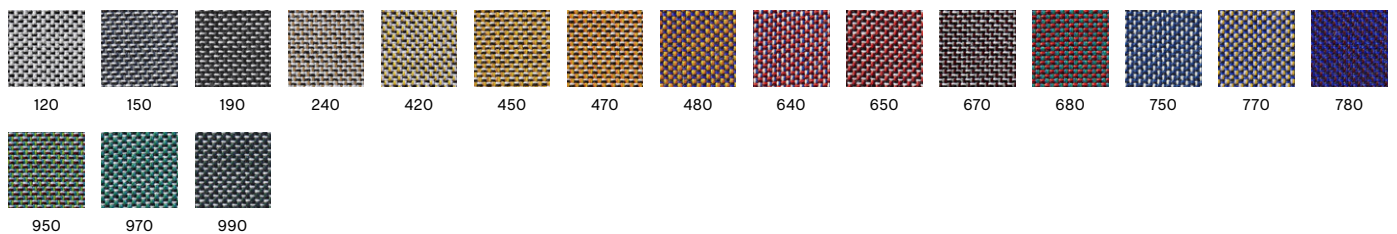
**LIGHTFASTNESS**  
5-6

**PILLING**  
3-4

**FIRE TESTS**  
EN 1021-1/2  
US Cal. Bull. 117-2013  
BS 5852 Crib 5 with  
treatment

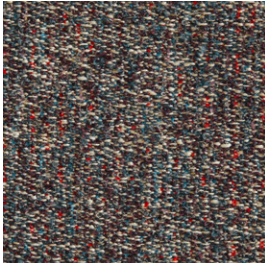
**SUSTAINABILITY**  
EU Ecolabel  
Greenguard Gold

670



Recommended for contract use

# FABRIC GROUP 1



## SWARM

HAY  
Cotton Linen 2

COMPOSITION  
31% Acrylic, 17%  
Cotton, 8% Linen,  
36% Polyester, 8%  
Viscose

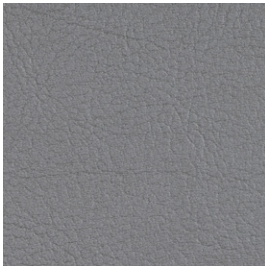
DURABILITY  
28.000 Martindale

LIGHTFASTNESS  
5

PILLING  
3-4

FIRE TESTS  
EN 1021-1/2 with FR  
treatment

Multi colour



## VALENCIA™

Spradling

COMPOSITION  
Vinyl / Urethane  
Topcoat

DURABILITY  
300.000 Martindale

LIGHTFASTNESS  
4-5

COLOUR  
FASTNESS TO  
RUBBING DRY  
5-4/5

COLOUR  
FASTNESS TO  
RUBBING WET  
5-4/5

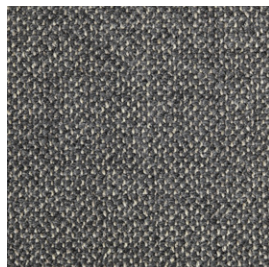
FIRE TESTS  
EN 1021-1/2  
US Cal. Bull. 117-2013  
BS 5852 Crib 5  
(Valencia C5)

4020



Recommended for contract use

## FABRIC GROUP 2



### FAIRWAY

HAY  
Textures

**COMPOSITION**  
34% Acrylic, 26% Polyester, 22% Wool, 12% Cotton, 2% Viscose, 2% Linen

**DURABILITY**  
60.000 Martindale

**LIGHTFASTNESS**  
5

**PILLING**  
4

**FIRE TESTS**  
EN 1021-1/2  
US Cal. Bull. 117-2013  
with FR treatment

**SUSTAINABILITY**  
OEKO-TEX®  
STANDARD 100

Grey 307-201

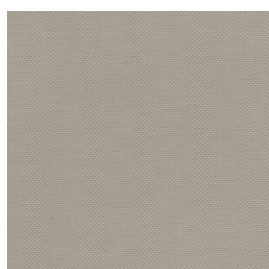


Grey 307-201



Dark blue 308-288

Recommended for contract use



### FIELD 2

Kvadrat

**COMPOSITION**  
100% Trevira CS

**DURABILITY**  
80.000 Martindale

**LIGHTFASTNESS**  
7

**PILLING**  
4-5

**FIRE TESTS\***  
EN 1021-1/2  
US Cal. Bull. 117-2013  
BS 5852 Crib 5

**SUSTAINABILITY**  
EU Ecolabel  
Greenguard Gold

0233



0123



0132



0142



0173



0182



0192



0222



0233



0242



0343



0373



0443



0463



0623



0643



0662



0663



0673



0693



0723



0733



0763



0773



0782



0793



0843



0933



0943



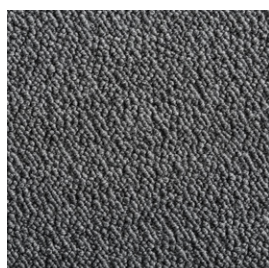
0963



0983

Recommended for contract use

\*Find more tests and information at kvadrat.dk



### FLAMIBER\*

HAY

**COMPOSITION**  
33% Acrylic, 30% Wool, 29% Cotton, 7% Polyester, 1% Viscose

**DURABILITY**  
120.000 Martindale

**LIGHTFASTNESS**  
5-6

**PILLING**  
4-5

**FIRE TESTS**  
US Cal. Bull. 117-2013

Charcoal C8



Charcoal C8



Cream A5



Dark blue J4



Grey C8



Petrol Blue J4



Mimosa E9



Sand J7



Olive E9



Ice blue J7



Mandarin E9



Light grey J7



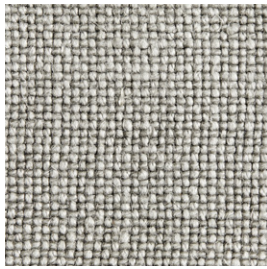
Carne J7

Recommended for contract use

\*Not available in UK



## FABRIC GROUP 2



### LINEN GRID\*

HAY

Cotton Linen 2

COMPOSITION  
100% Linen

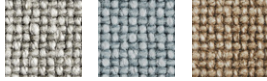
DURABILITY  
25.000 Martindale

LIGHTFASTNESS  
3-5

PILLING  
3

FIRE TESTS  
US Cal. Bul. 117-2013

Adriatic blue



Adriatic blue    Blue    Dark beige

\*Not available in UK



### LOLA\*

HAY

COMPOSITION  
82% Cotton, 9%  
Modal, 9% Polyester

DURABILITY  
100.000 Martindale

LIGHTFASTNESS  
5-6

FIRE TESTS  
EN 1021-1

Rose



Beige    Blue    Dark green    Moss    Navy    Rose    Warm grey    Yellow

Recommended for contract use

\*Not available in UK



### MAGLIA

HAY

Cotton Linen 2

COMPOSITION  
42% Viscose,  
36% Cotton,  
16% Acrylic,  
6% Polyester

DURABILITY  
35.000 Martindale

LIGHTFASTNESS  
5

PILLING  
4-5

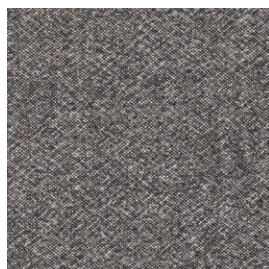
FIRE TESTS\*  
EN 1021-1/2  
US Cal. Bul. 117-2013  
BS 5852 Crib 5 with  
treatment

Cream



Blue black    Cream    Dark green    Olive    Petrol blue    Warm grey

## FABRIC GROUP 2



### MELANGE NAP

Kvadrat  
Design by Akira Minagawa

**COMPOSITION**  
97% new wool  
(worsted),  
3% nylon

**DURABILITY**  
60.000 Martindale

**LIGHTFASTNESS**  
6

**PILLING**  
3

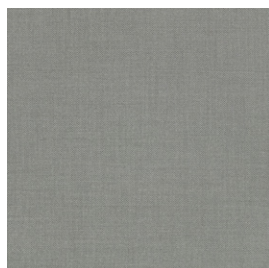
**FIRE TESTS\***  
EN 1021-1/2  
US Cal. Bull. 117-2013  
BS 5852 Crib 5 with  
treatment

**SUSTAINABILITY**  
EU Ecolabel  
Greenguard Gold  
HPD  
EPD

0171



Recommended for contract use  
\*Find more tests and information at kvadrat.dk



### NICO

Maharam

**COMPOSITION**  
63% Wool,  
21% Polyester,  
16% Nylon

**DURABILITY**  
100.000 Martindale

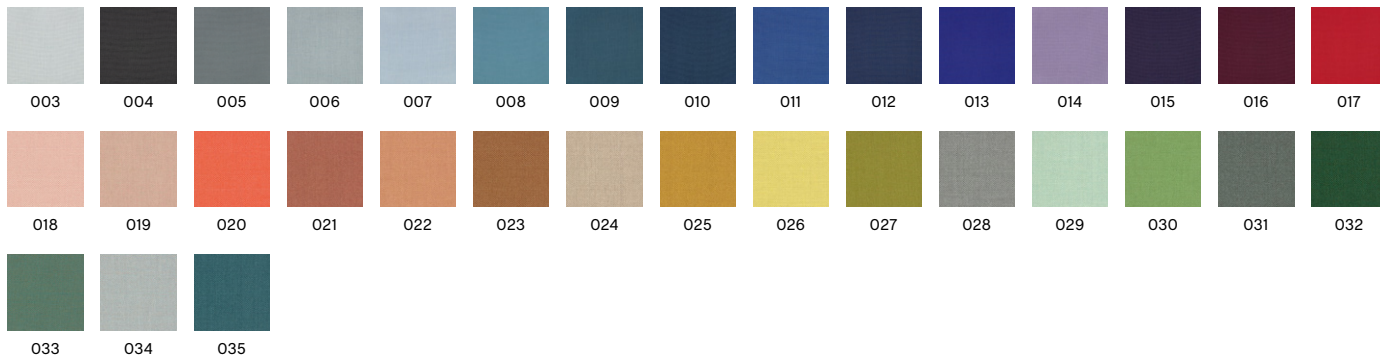
**LIGHTFASTNESS**  
3-6

**PILLING**  
3-4

**FIRE TESTS**  
EN 1021-1/2  
US Cal. Bull. 117-2013  
BS 5852 Crib 5 with  
treatment\*

**SUSTAINABILITY**  
Greenguard Gold  
FR Free  
PFAS Free

028



Recommended for contract use

## FABRIC GROUP 2



### OLAVI BY HAY

Romo & HAY

**COMPOSITION**  
54% Polyester, 26%  
Acrylic, 20% Cotton

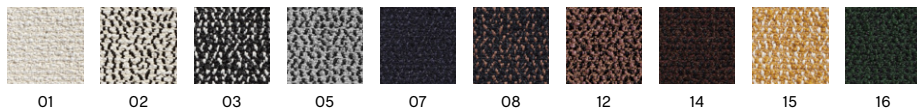
**DURABILITY**  
70.000 Martindale

**LIGHTFASTNESS**  
5-6

**PILLING**  
3-4

**FIRE TESTS**  
1021-1/2 with FR  
treatment  
US Cal. Bul. 117-2013

02



Recommended for contract use



### OSUMI\*

Romo

**COMPOSITION**  
80% Cotton,  
20% Polyester

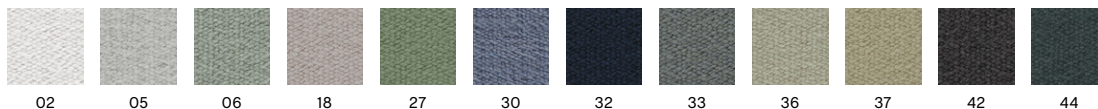
**DURABILITY**  
75.000 Martindale

**LIGHTFASTNESS**  
5

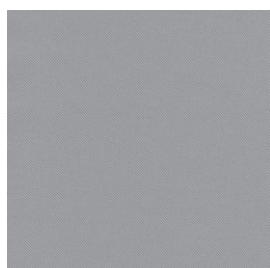
**PILLING**  
4

**FIRE TESTS**  
EN 1021-1/2  
US Cal. Bul. 117-2013  
BS 5852 Crib 5  
With FR Treatment

05



Recommended for contract use  
\*Only available in selected colours



### RELATE

Kvadrat  
Design by Patricia Urquiola

**COMPOSITION**  
100% Trevira CS

**DURABILITY**  
80.000 Martindale

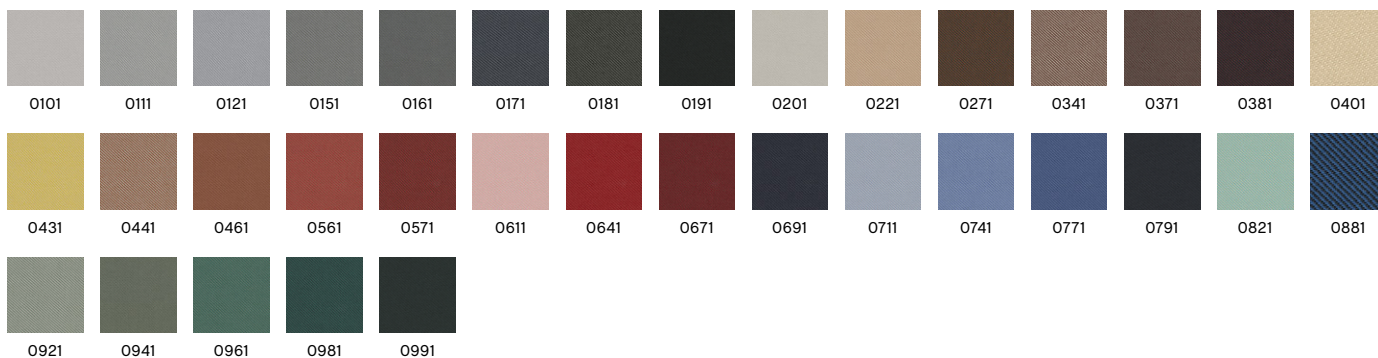
**LIGHTFASTNESS**  
5-7

**PILLING**  
4-5

**FIRE TESTS\***  
EN 1021-1/2  
US Cal. Bul. 117-2013  
BS 5852 Crib 5

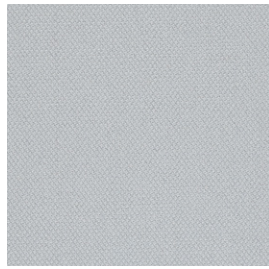
**SUSTAINABILITY**  
EU Ecolabel  
Greenguard Gold

0121



Recommended for contract use  
\*Find more tests and information at kvadrat.dk

## FABRIC GROUP 2



### STEELCUT 3

Kvadrat

Design by Frans Dijkmeijer & Giulio Ridolfo

**COMPOSITION**  
90% new wool  
(worsted),  
10% nylon

**DURABILITY**  
100.000 Martindale

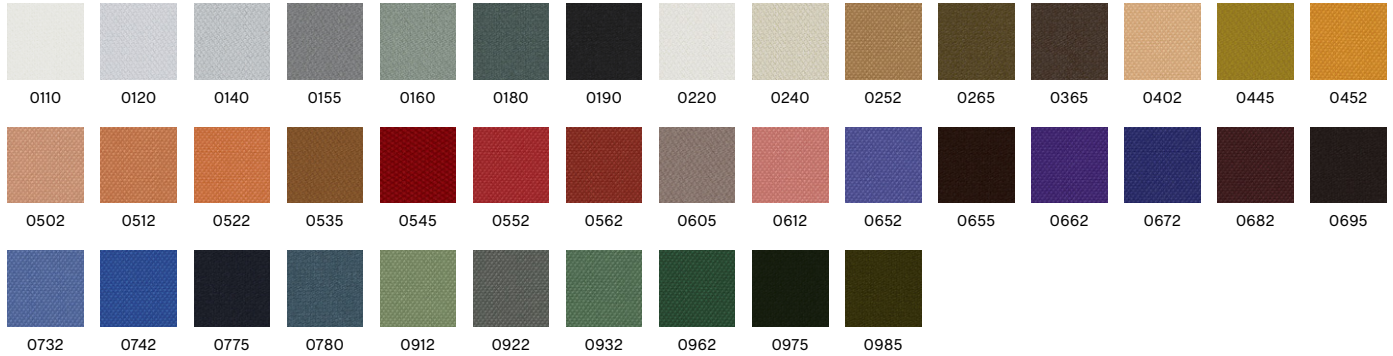
**LIGHTFASTNESS**  
5-7

**PILLING**  
3-4

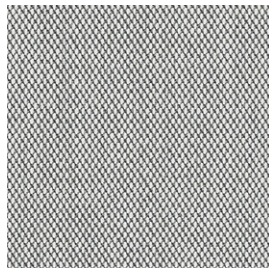
**FIRE TESTS\***  
EN 1021-1/2  
US Cal. Bull. 117-2013  
BS 5852 Crib 5 with  
treatment

**SUSTAINABILITY**  
EU Ecolabel  
Greenguard Gold  
HPD  
EPD

0140



Recommended for contract use  
\*Find more tests and information at [kvadrat.dk](http://kvadrat.dk)



### STEELCUT TRIO 3

Kvadrat

Design by Frans Dijkmeijer & Giulio Ridolfo

**COMPOSITION**  
90% new wool  
(worsted),  
10% nylon

**DURABILITY**  
100.000 Martindale

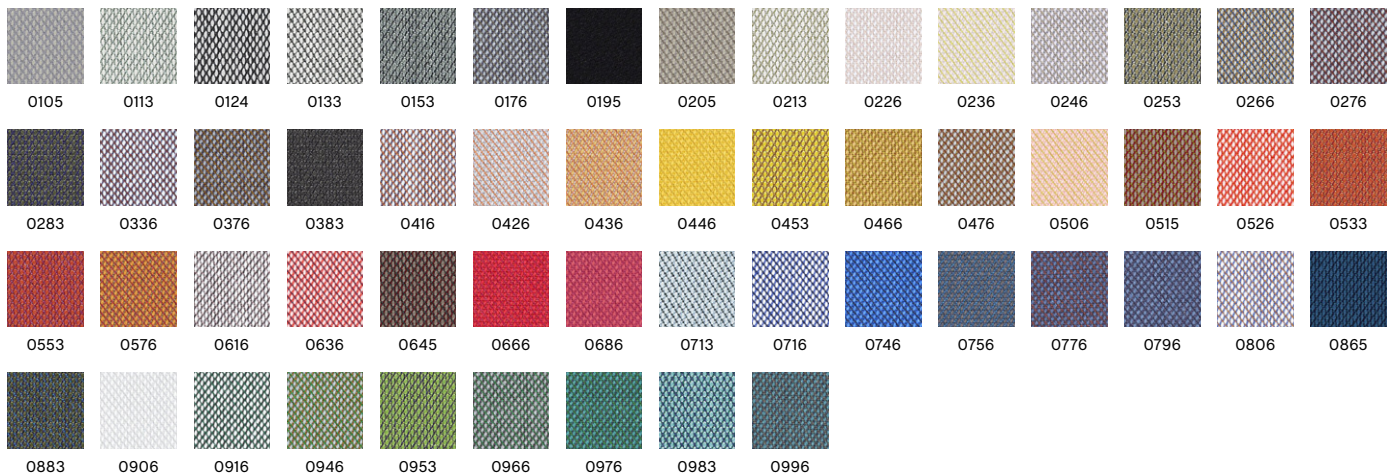
**LIGHTFASTNESS**  
5-7

**PILLING**  
4

**FIRE TESTS\***  
EN 1021-1/2  
US Cal. Bull. 117-2013  
BS 5852 Crib 5 with  
treatment

**SUSTAINABILITY**  
EU Ecolabel  
Greenguard Gold  
HPD  
EPD

0133



Recommended for contract use  
\*Find more tests and information at [kvadrat.dk](http://kvadrat.dk)

## FABRIC GROUP 2



### TADAO

HAY  
Textures

**COMPOSITION**  
46% Wool, 20% Linen,  
19% Polyester,  
15% Cotton

**DURABILITY**  
40.000 Martindale

**LIGHTFASTNESS**  
4

**PILLING**  
4

**FIRE TESTS\***  
EN 1021-1/2  
US Cal. Bull. 117-2013  
BS 5852 Crib 5  
with treatment

720



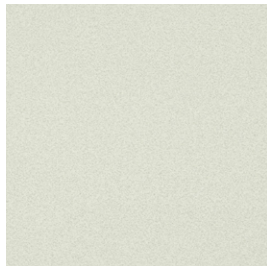
200

410

600

720

# FABRIC GROUP 3



## COMPOUND

Maharam

**COMPOSITION**  
100% Polyurethane

**DURABILITY**  
100.000 Martindale

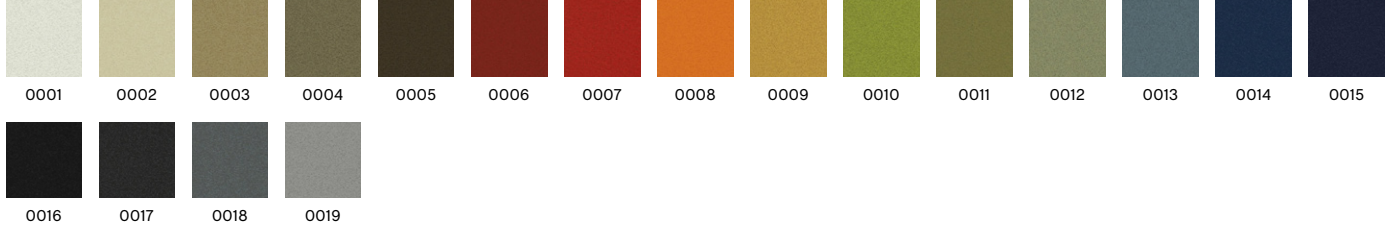
**LIGHTFASTNESS**  
7

**PILLING**  
5

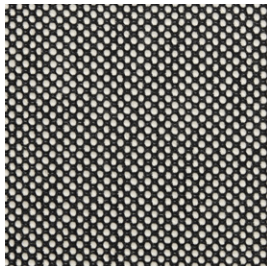
**FIRE TESTS\***  
EN 1021-1/2 with FR treatment  
US Cal. Bull. 117-2013  
BS 5852 Crib 5 with treatment

**SUSTAINABILITY**  
Greenguard Gold  
Pfas-free

0001



Recommended for contract use  
\*Find more tests and information at maharam.com



## DOT 1682

HAY  
Textures

**COMPOSITION**  
55% Wool,  
45% Cotton

**DURABILITY**  
50.000 Martindale

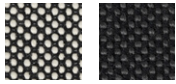
**LIGHTFASTNESS**  
4-5

**PILLING**  
3-4

**FIRE TESTS**  
EN 1021-1/2  
US Cal. Bull. 117-2013

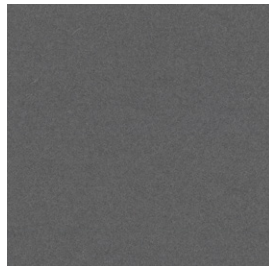
**SUSTAINABILITY**  
OEKO-TEX®  
STANDARD 100

02 Bianco/Nero



02 Bianco/Nero  
03 Bianco/Nero Anthracite

# FABRIC GROUP 3

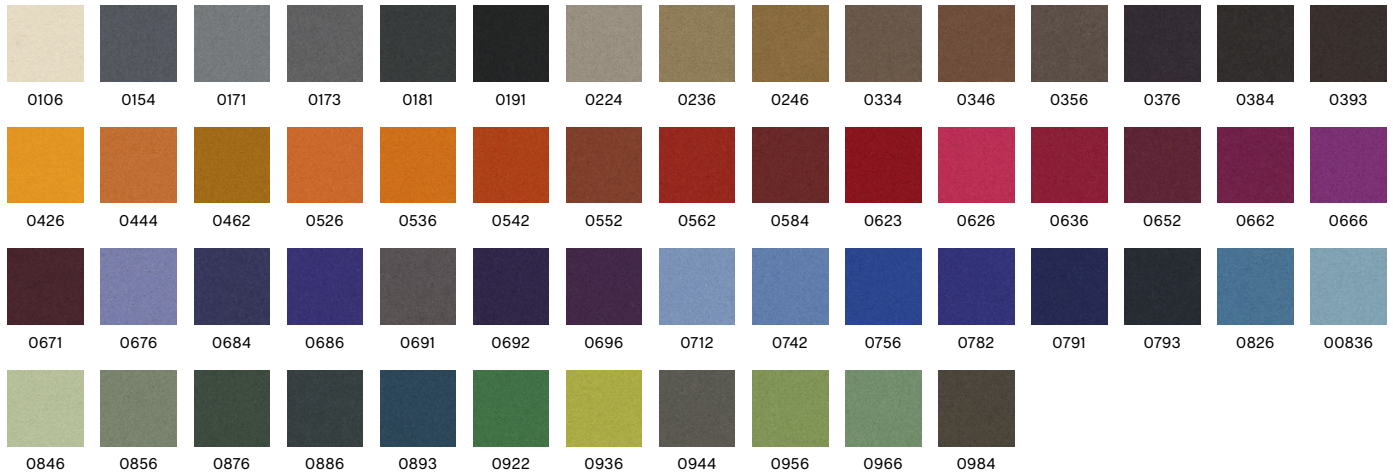


## DIVINA 3

Kvadrat  
Design by Finn Sködt

<b>COMPOSITION</b> 100% new wool	<b>DURABILITY</b> 45.000 Martindale	<b>LIGHTFASTNESS</b> 5-7	<b>PILLING</b> 3	<b>FIRE TESTS*</b> EN 1021-1/2 US Cal. Bull. 117-2013 BS 5852 Crib 5 with treatment	<b>SUSTAINABILITY</b> EU Ecolabel Greenguard Gold HPD EPD
-------------------------------------	--	-----------------------------	---------------------	---	---

0173



Recommended for contract use  
\*Find more tests and information at kvadrat.dk

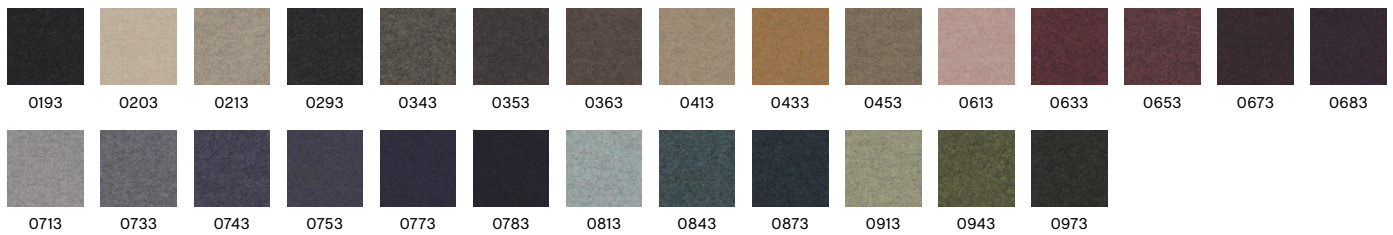


## DIVINA MD

Kvadrat  
Design by Finn Sködt

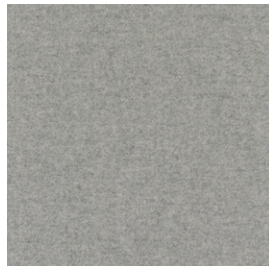
<b>COMPOSITION</b> 100% new wool	<b>DURABILITY</b> 45.000 Martindale	<b>LIGHTFASTNESS</b> 5-6	<b>PILLING</b> 3	<b>FIRE TESTS*</b> EN 1021-1/2 US Cal. Bull. 117-2013 BS 5852 Crib 5 with treatment	<b>SUSTAINABILITY</b> EU Ecolabel Greenguard Gold HPD EPD
-------------------------------------	--	-----------------------------	---------------------	---	---

0713



Recommended for contract use  
\*Find more tests and information at kvadrat.dk

## FABRIC GROUP 3



### DIVINA MELANGE 3

Kvadrat

Design by Finn Sködt

COMPOSITION  
100% new wool

DURABILITY  
45.000 Martindale

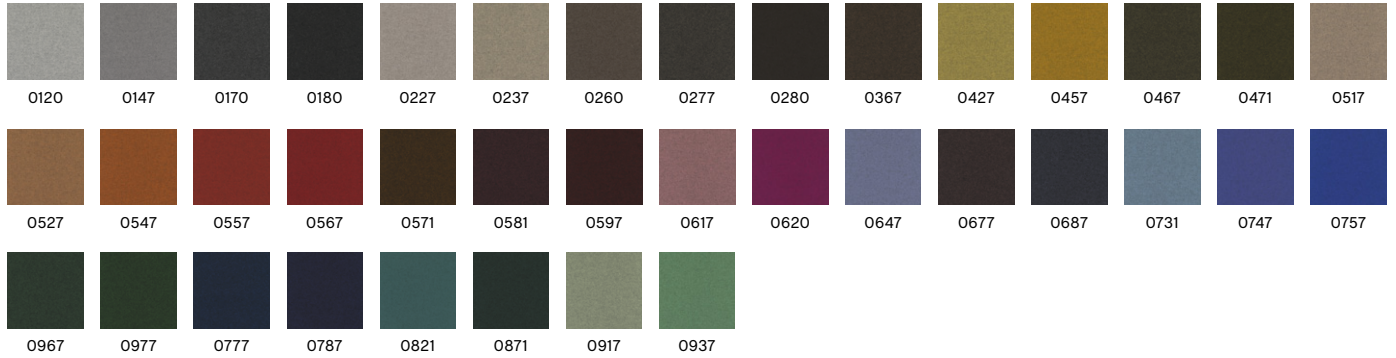
LIGHTFASTNESS  
5-7

PILLING  
3

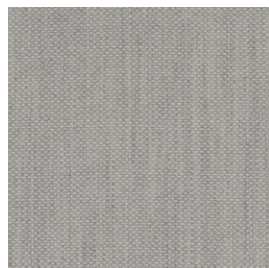
FIRE TESTS\*  
EN 1021-1/2  
US Cal. Bull. 117-2013  
BS 5852 Crib 5  
with treatment

SUSTAINABILITY  
EU Ecolabel  
Greenguard Gold  
HPD  
EPD

0120



Recommended for contract use  
\*Find more tests and information at kvadrat.dk



### FIORD 2

Kvadrat

Design by Louise Sigvardt

COMPOSITION  
92% New wool  
(worsted), 8% Nylon

DURABILITY  
60.000 Martindale

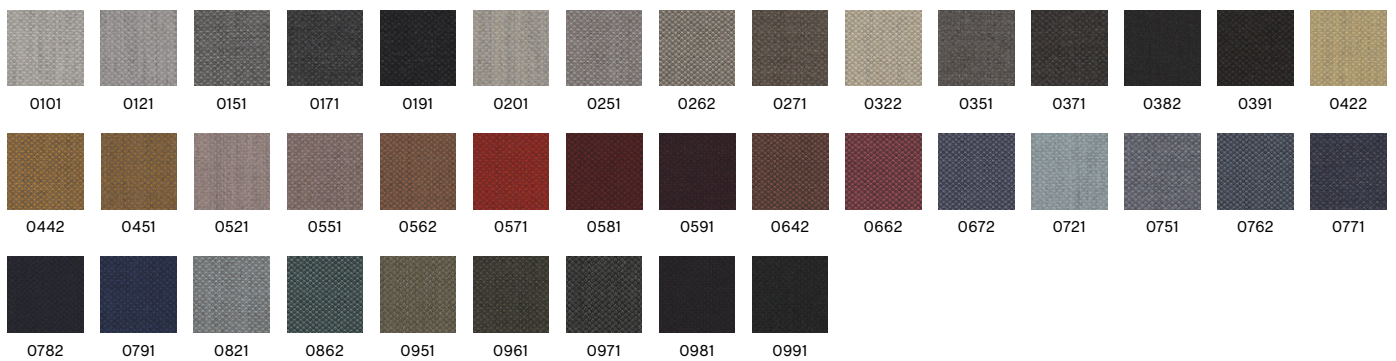
LIGHTFASTNESS  
5-7

PILLING  
4-5

FIRE TESTS\*  
EN 1021-1/2  
US Cal. Bull. 117-2013  
BS 5852 Crib 5 with  
treatment

SUSTAINABILITY  
EU Ecolabel  
Greenguard Gold  
HPD  
EPD

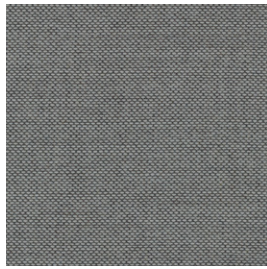
0101



Recommended for contract use  
\*Find more tests and information at kvadrat.dk



## FABRIC GROUP 3



### RE-WOOL

Kvadrat  
Design by Margrethe Odgaard

**COMPOSITION**  
45% Recycled wool,  
45% New wool  
(worsted), 10% Nylon

**DURABILITY**  
100.000 Martindale

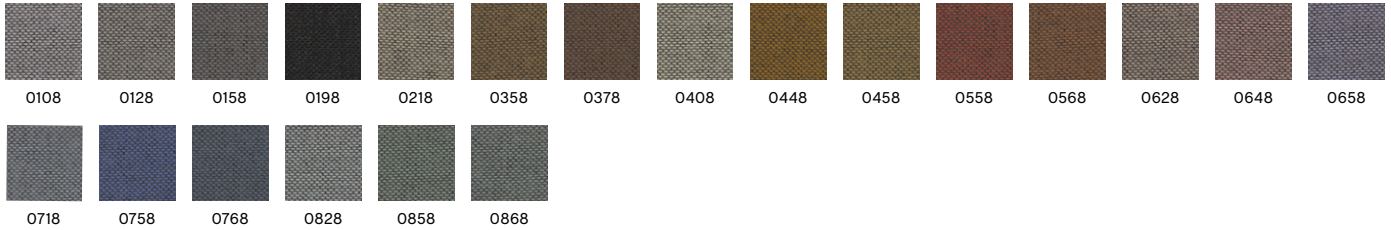
**LIGHTFASTNESS**  
5-7

**PILLING**  
4

**FIRE TESTS\***  
EN 1021-1/2  
US Cal. Bull. 117-2013  
BS 5852 Crib 5 with  
treatment

**SUSTAINABILITY**  
EU Ecolabel  
Greenguard Gold  
HPD

0828



Recommended for contract use  
\*Find more tests and information at [kvadrat.dk](http://kvadrat.dk)



### RODEN\*

Romo

**COMPOSITION**  
55% Viscose, 24%  
Linen, 10% Cotton,  
8% Polyester, 3%  
Polyamide

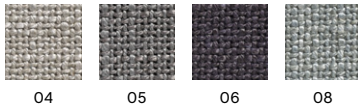
**DURABILITY**  
50.000 Martindale

**LIGHTFASTNESS**  
5-6

**PILLING**  
2-3

**FIRE TESTS**  
EN 1021-1/2  
US Cal. Bull. 117-2013  
BS 5852 Crib 5 with  
treatment

04



\*Only available in selected colours



### RUSKIN\*

Romo

**COMPOSITION**  
70% Viscose, 15%  
Linen, 10% Wool, 5%  
Polyamide

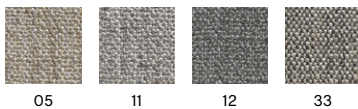
**DURABILITY**  
60.000 Martindale

**LIGHTFASTNESS**  
5

**PILLING**  
3

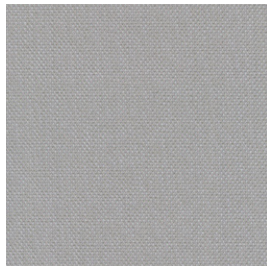
**FIRE TESTS**  
EN 1021-1/2  
BS 5852 Crib 5 with  
treatment

11



\*Only available in selected colours

## FABRIC GROUP 3



### STEELCUT QUARTET

Kvadrat  
Design by Frans Dijkmeijer & Giulio Ridolfo

**COMPOSITION**  
90% New wool,  
10% Nylon

**DURABILITY**  
100.000 Martindale

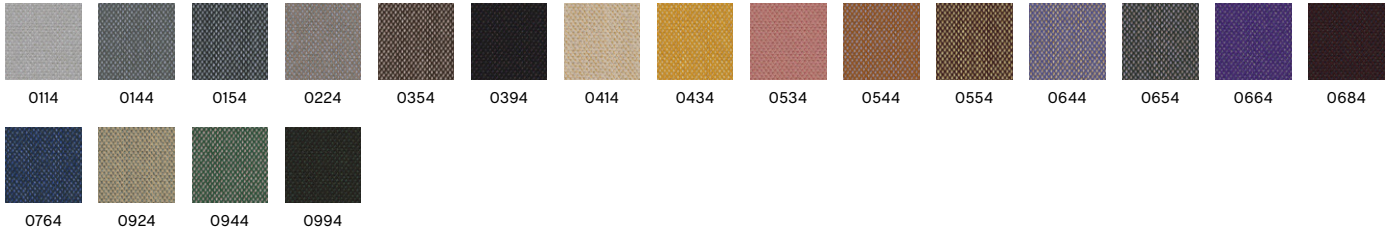
**LIGHTFASTNESS**  
6

**PILLING**  
4-5

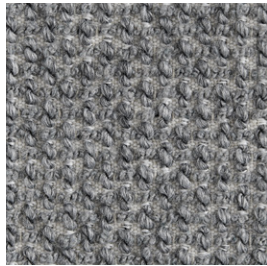
**FIRE TESTS\***  
EN 1021-1/2  
US Cal.Bull.117-2013  
BS 5852 Crib 5 with  
treatment

**SUSTAINABILITY**  
EU Ecolabel  
Greenguard Gold

0114



Recommended for contract use  
\*Find more tests and information at kvadrat.dk



### TARTAGLIA

HAY  
Textures

**COMPOSITION**  
35% Cotton, 25%  
Acrylic,  
35% Polyester,  
5% Wool

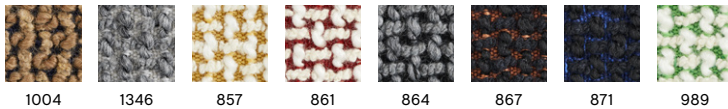
**DURABILITY**  
70.000 Martindale

**LIGHTFASTNESS**  
5

**PILLING**  
4-5

**FIRE TESTS\***  
EN 1021-1/2 with FR  
treatment  
US Cal. Bull. 117-2013

1346



Recommended for contract use

# FABRIC GROUP 4



LGG60

## BOLGHERI

HAY  
Textures

**COMPOSITION**  
35% Viscose, 26%  
Wool, 17% Polyamide,  
15% Silk, 7% Linen

**DURABILITY**  
30.000 Martindale

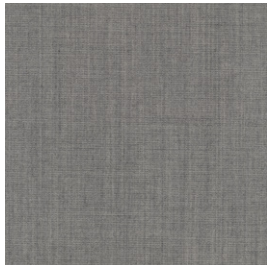
**LIGHTFASTNESS**  
5

**PILLING**  
3-4

**FIRE TESTS**  
EN 1021-1/2  
US Cal. Bull. 117-2013

**SUSTAINABILITY**  
OEKO-TEX®  
STANDARD 100

Recommended for contract use



0124

## CANVAS 2

Kvadrat  
Design by Giulio Ridolfo

**COMPOSITION**  
90% New wool  
(worsted), 10% Nylon

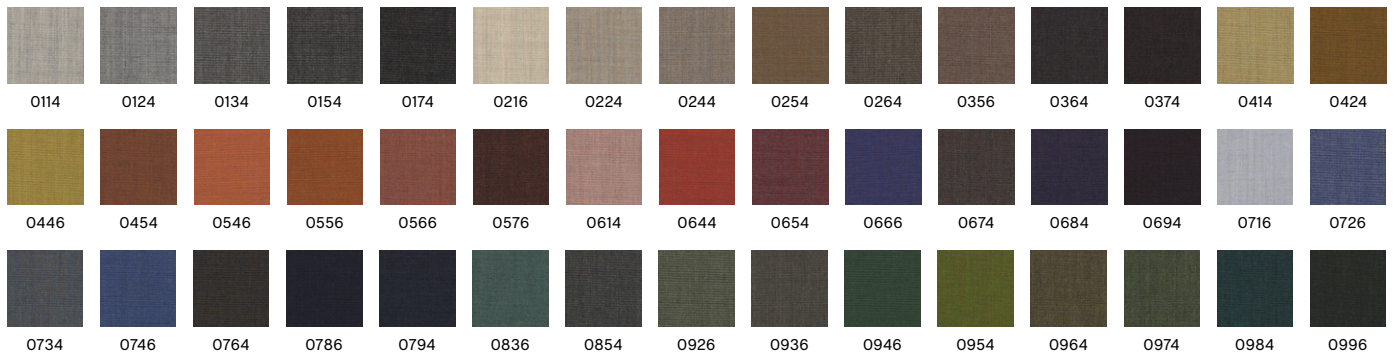
**DURABILITY**  
100.000 Martindale

**LIGHTFASTNESS**  
5-6

**PILLING**  
4

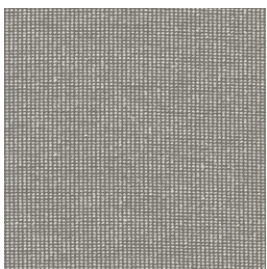
**FIRE TESTS\***  
EN 1021-1/2  
US Cal. Bull. 117-2013  
BS 5852 Crib 5 with  
treatment

**SUSTAINABILITY**  
EU Ecolabel  
Greenguard Gold  
HPD  
EPD



Recommended for contract use

\*Find more tests and information at kvadrat.dk



0222

## ENCIRCLE

Kvadrat  
Design by Karin an Rijlaarsdam

**COMPOSITION**  
100% Trevira CS

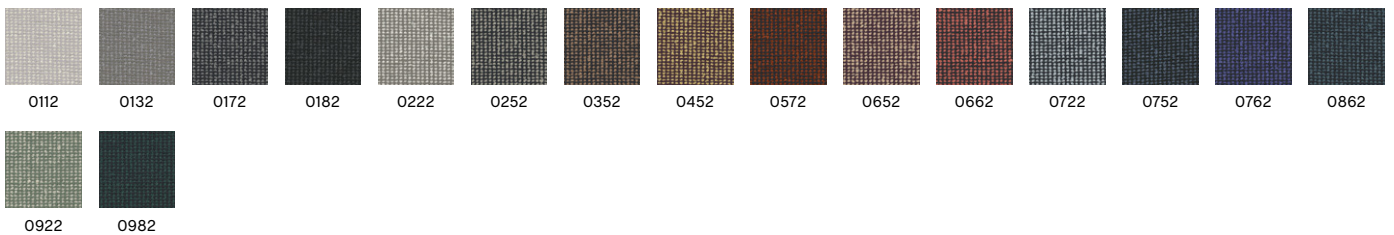
**DURABILITY**  
80.000 Martindale

**LIGHTFASTNESS**  
5-7

**PILLING**  
4

**FIRE TESTS\***  
EN 1021-1/2  
US Cal. Bull. 117-2013  
BS 5852 Crib 5

**SUSTAINABILITY**  
Greenguard Gold



Recommended for contract use

\*Find more tests and information at kvadrat.dk

# FABRIC GROUP 4



## HALLINGDAL 65

Kvadrat  
Design by Nanna Ditzel

**COMPOSITION**  
70% New wool,  
30% Viscose

**DURABILITY**  
100.000 Martindale

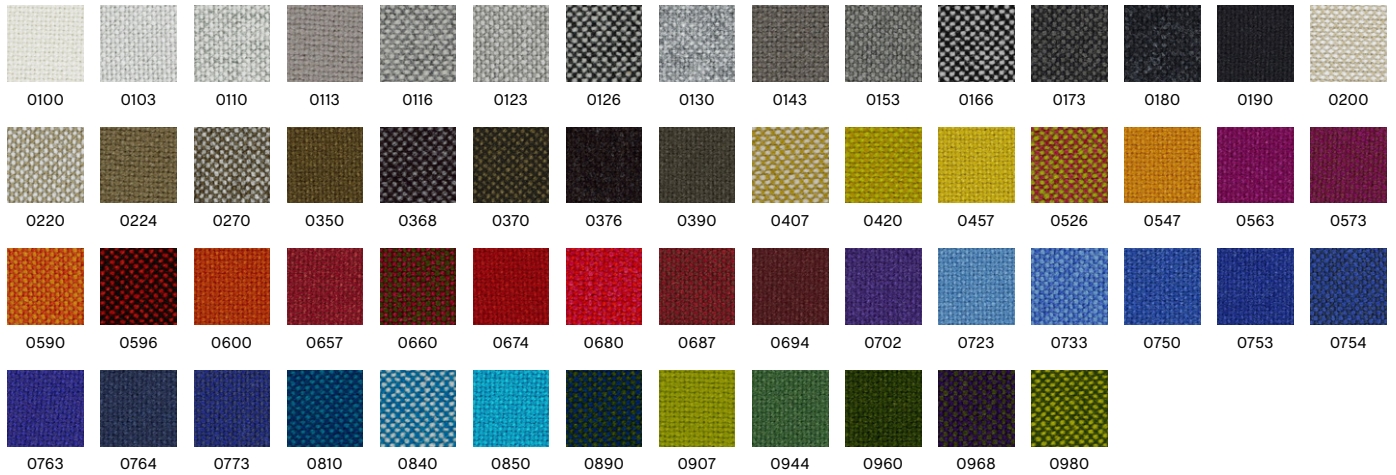
**LIGHTFASTNESS**  
5-7

**PILLING**  
3-4

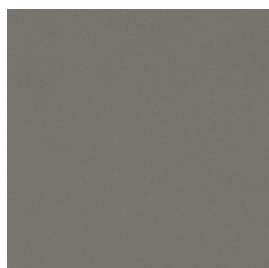
**FIRE TESTS\***  
EN 1021-1/2  
US Cal. Bull. 117-2013  
BS 5852 Crib 5

**SUSTAINABILITY**  
EU Ecolabel  
Greenguard Gold  
HPD  
EPD

0100



Recommended for contract use  
\*Find more tests and information at kvadrat.dk



## ICE FR\*

Romo

**COMPOSITION**  
82% Cotton,  
18% Polyester

**DURABILITY**  
100.000 Martindale

**LIGHTFASTNESS**  
5

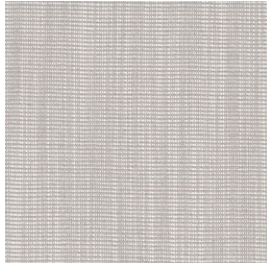
**FIRE TESTS**  
EN 1021-1/2

15 Meteor



\*Only available in UK  
\*Only available in selected colours

# FABRIC GROUP 4



## RAAS

Kvadrat

Design by by Doshi Levien

**COMPOSITION**  
92% New wool  
(worsted), 8% Nylon

**DURABILITY**  
100.000 Martindale

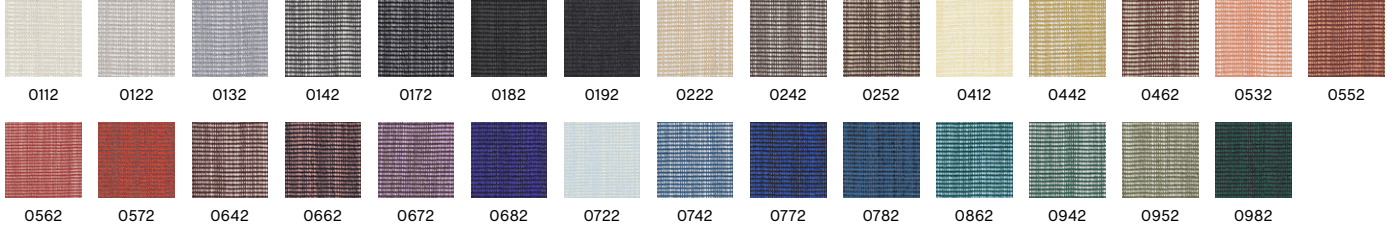
**LIGHTFASTNESS**  
6-7

**PILLING**  
4-5

**FIRE TESTS\***  
EN 1021-1/2  
US Cal. Bull. 117-2013  
BS 5852 Crib 5 with  
treatment

**SUSTAINABILITY**  
EU Ecolabel  
Greenguard Gold  
HPD  
EPD

0122



Recommended for contract use  
\*Find more tests and information at [kvadrat.dk](http://kvadrat.dk)

## FABRIC GROUP 5



### BALDER 3

Kvadrat/Raf Simons  
Design by Fanny Aronssen

**COMPOSITION**  
68% New wool, 26%  
Cotton, 6% Nylon

**DURABILITY**  
100.000 Martindale

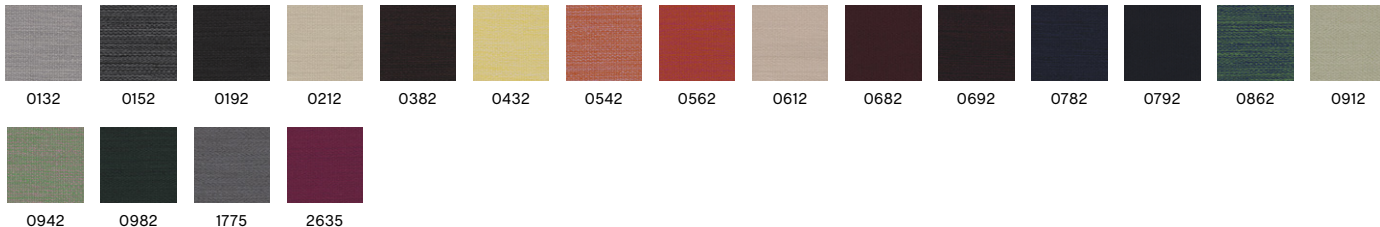
**LIGHTFASTNESS**  
5-7

**PILLING**  
4

**FIRE TESTS\***  
EN 1021-1/2  
US Cal. Bull. 117-2013  
BS 5852 Crib 5 with  
treatment

**SUSTAINABILITY**  
Greenguard Gold  
HPD  
EPD

0132



Recommended for contract use  
\*Find more tests and information at kvadrat.dk



### HAKU\*

Kvadrat  
Design by Teruhiro Yanagihara

**COMPOSITION**  
100% polyurethane/  
silicone (surface)

**DURABILITY**  
100.000 Martindale

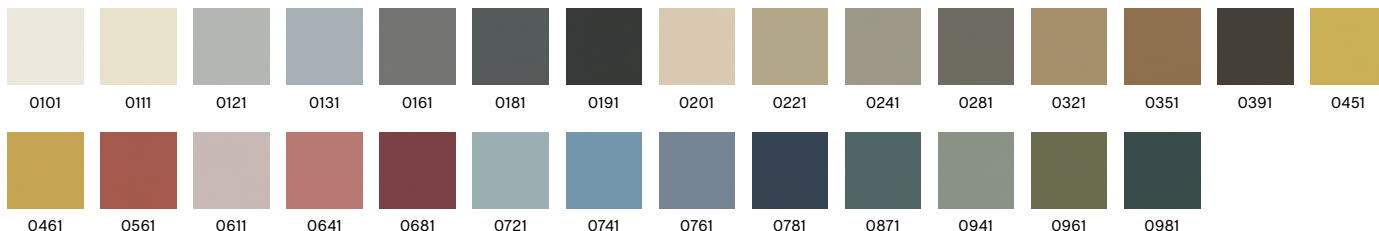
**LIGHTFASTNESS**  
6-7

**PILLING**  
5

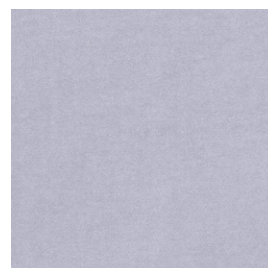
**FIRE TESTS**  
EN 1021-1  
US Cal.Bull.117-2013

**SUSTAINABILITY**  
Greenguard Gold

0121



Recommended for contract use  
\*Find more tests and information at kvadrat.dk  
\*Not available in UK



### HARALD 3\*

Kvadrat/Raf Simons  
Design by Fanny Aronssen

**COMPOSITION**  
100% Cotton

**DURABILITY**  
100.000 Martindale

**LIGHTFASTNESS**  
5-6

**PILLING**  
4-5

**FIRE TESTS**  
EN 1021-1

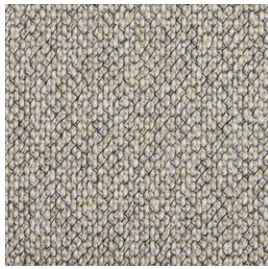
**SUSTAINABILITY**  
Greenguard Gold  
HPD  
EPD

0133



Recommended for contract use  
\*Not available in UK

# FABRIC GROUP 5



## LOFT

HAY

Cotton Linen 2

**COMPOSITION**  
80% Viscose,  
11% Polyester,  
9% Cotton

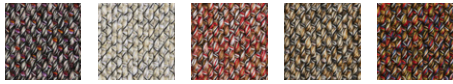
**DURABILITY**  
>100.000 Martindale

**LIGHTFASTNESS**  
5

**PILLING**  
4-5

**FIRE TESTS\***  
EN 1021-1/2  
US Cal. Bull. 117-2013

200



103

200

304

401

500

Recommended for contract use



## SIERRA LEATHER

Camo

**COMPOSITION**  
Corrected leather

**COLOUR FASTNESS TO RUBBING DRY**  
5

**COLOUR FASTNESS TO RUBBING WET**  
4

**LIGHTFASTNESS**  
7

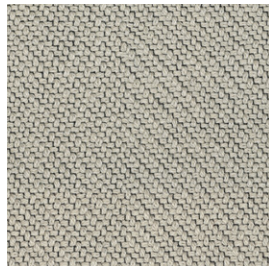
**FIRE TESTS**  
EN 1021-1/2  
US Cal. Bull. 117-2013  
BS 5852 Crib 5 with treatment

SIK1003 Cognac



Recommended for contract use

## FABRIC GROUP 6



### CODA 2

Kvadrat  
Design by Norway Says & Per Bjørnsen

**COMPOSITION**  
90% New wool,  
10% Nylon

**DURABILITY**  
100.000 Martindale

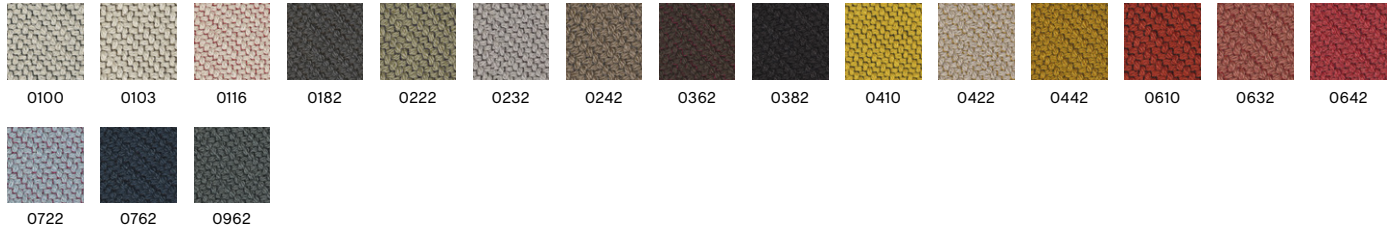
**LIGHTFASTNESS**  
5-7

**PILLING**  
4

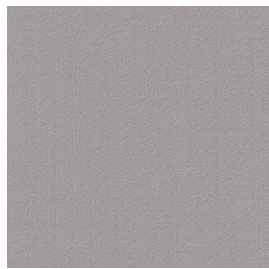
**FIRE TESTS\***  
EN 1021-1/2  
US Cal. Bull. 117-2013  
BS 5852 Crib 5 with  
treatment

**SUSTAINABILITY**  
Greenguard Gold  
HPD  
EPD

0100



Recommended for contract use  
\*Find more tests and information at kvadrat.dk



### VIDAR 4

Kvadrat/Raf Simons  
Design by Fanny Aronsen

**COMPOSITION**  
94% New wool,  
6% Nylon

**DURABILITY**  
100.000 Martindale

**LIGHTFASTNESS**  
5-7

**PILLING**  
4-5

**FIRE TESTS\***  
EN 1021-1/2  
US Cal. Bull. 117-2013  
BS 5852 Crib 5 with  
treatment

**SUSTAINABILITY**  
EU Ecolabel  
Greenguard Gold  
HPD  
EPD

0123



Recommended for contract use  
\*Find more tests and information at kvadrat.dk



## FABRIC GROUP 6



### CALIFORNIA LEATHER

Camo

COMPOSITION Semi aniline leather	COLOUR FASTNESS TO RUBBING DRY 4	COLOUR FASTNESS TO RUBBING WET 3	LIGHTFASTNESS 4	FIRE TESTS EN 1021-1/2 US Cal. Bull. 117-2013 BS 5852 Crib 5 with treatment
-------------------------------------	---	---	--------------------	---

CA5003 Cognac



Recommended for contract use



### NEVADA LEATHER\*

Camo

Selected Leather & Canvas 2

COMPOSITION Aniline leather	COLOUR FASTNESS TO RUBBING DRY 3	COLOUR FASTNESS TO RUBBING WET 3	LIGHTFASTNESS 4	FIRE TESTS EN 1021-1/2 US Cal. Bull. 117-2013 BS 5852 Crib 5	SUSTAINABILITY Free of chrome
--------------------------------	---	---	--------------------	---	----------------------------------

NV2488S Cognac



Recommended for contract use  
\*Only available in selected colours



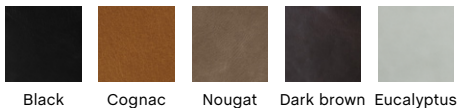
### SENSE LEATHER

HAY

Selected Leather & Canvas 2

COMPOSITION Aniline leather	COLOUR FASTNESS TO RUBBING DRY 3	COLOUR FASTNESS TO RUBBING WET 3	LIGHTFASTNESS 3	FIRE TESTS EN 1021-1/2 US Cal. Bull. 117-2013 BS 5852 Crib 5 with treatment
--------------------------------	---	---	--------------------	---

Cognac



Recommended for contract use











# UPHOLSTERY MATRIX

## STOOLS & BAR STOOLS



		AAS 32 FRONT UPH.	AAS 33	AAS 38 FRONT UPH.	AAS 39	SOFT EDGE 90 BAR STOOL SEAT UPH.	SOFT EDGE 91 BAR STOOL FULL UPH.	SOFT EDGE 95 BAR STOOL SEAT UPH.	NEU 12 BAR STOOL FULL UPH.
FABRIC GROUP 1	ATLAS		●	●	●	●	●	●	●
	LINARA		●	●	●	●	●	●	●
	LINT (NOT AVAILABLE IN UK)		●	●	●	●	●	●	●
	METAPHOR		●	●	●	●	●	●	●
	MODE		●	●	●	●	●	●	●
	PLANAR (NOT AVAILABLE IN UK)		●	●	●	●	●	●	●
	RANDOM FADE		●	●	●	●	●	●	●
	REMIX		●	●	●	●	●	●	●
	SURFACE BY HAY		●	●	●	●	●	●	●
	SWARM		●	●	●	●	●	●	●
	VALENCIA		●	●	●	●	●	●	●
	FABRIC GROUP 2	FAIRWAY		●	●	●	●	●	●
FIELD									
FLAMIBER (NOT AVAILABLE IN UK)			●	●	●	●	●	●	●
LINEN GRID (NOT AVAILABLE IN UK)			●	●	●	●	●	●	●
LOLA (NOT AVAILABLE IN UK)			●	●	●	●	●	●	●
MAGLIA			●	●	●	●	●	●	●
MELANGE NAP			●	●	●	●	●	●	●
NICO			●	●	●	●	●	●	●
OLAVI BY HAY			●	●	●	●	●	●	●
OSUMI			●	●	●	●	●	●	●
RELATE									
STEELCUT			●	●	●	●	●	●	●
STEELCUT TRIO		●	●	●	●	●	●	●	
TADAO		●	●	●	●	●	●	●	
FABRIC GROUP 3	COMPOUND		●	●	●	●	●	●	●
	DOT 1682		●	●	●	●	●	●	●
	DIVINA		●	●	●	●	●	●	●
	DIVINA MD		●	●	●	●	●	●	●
	DIVINA MELANGE		●	●	●	●	●	●	●
	FIORD		●	●	●	●	●	●	●
	RE-WOOL		●	●	●	●	●	●	●
	RODEN		●	●	●	●	●	●	●
	RUSKIN		●	●	●	●	●	●	●
	STEELCUT QUARTET		●	●	●	●	●	●	●
	TARTAGLIA		●	●	●	●	●	●	●
FABRIC GROUP 4	BOLGHERI		●	●	●	●	●	●	●
	CANVAS		●	●	●	●	●	●	●
	ENCIRCLE		●	●	●	●	●	●	●
	HALLINGDAL		●	●	●	●	●	●	●
	ICE (ONLY AVAILABLE IN UK)		●	●	●	●	●	●	●
	RAAS		●	●	●	●	●	●	●
FABRIC GROUP 5	BALDER		●	●	●	●	●	●	●
	HAKU		●	●	●	●	●	●	●
	HARALD (NOT AVAILABLE IN UK)		●	●	●	●	●	●	●
	LOFT		●	●	●	●	●	●	●
	SIERRA LEATHER		●	●	●	●	●	●	●
FABRIC GROUP 6	CODA		●	●	●	●	●	●	●
	VIDAR		●	●	●	●	●	●	●
	CALIFORNIA LEATHER		●	●	●	●	●	●	●
	NEVADA LEATHER		●	●	●	●	●	●	●
	SENSE LEATHER		●	●	●	●	●	●	●





# UPHOLSTERY MATRIX









## LOUNGE

		SOFT EDGE 100 LOUNGE SEAT UPH.	SOFT EDGE 101 LOUNGE FULL UPH.	DAPPER	DORSO	UCHIWA FRONT	UCHIWA BACK	UCHIWA QUILT FRONT	UCHIWA QUILT BACK	UCHIWA OTTOMAN FRONT	UCHIWA OTTOMAN BACK	CAN*	ARBOUR CLUB ARMCHAIR	CHISEL LOUNGE CHAIR
FABRIC GROUP 1	ATLAS		●	●	●	●							●	
	LINARA		●	●	●	●		●		●		●	●	●
	LINT (NOT AVAILABLE IN UK)		●	●	●	●							●	●
	METAPHOR		●	●	●	●							●	●
	MODE		●	●	●	●	●			●			●	●
	PLANAR (NOT AVAILABLE IN UK)		●	●	●	●							●	●
	RANDOM FADE		●	●	●	●							●	●
	REMIX		●	●	●	●		●			●		●	●
	SURFACE BY HAY		●	●	●	●	●		●		●	●	●	
	SWARM		●	●	●	●							●	●
	VALENCIA				●	●							●	●
	FABRIC GROUP 2	FAIRWAY		●	●	●								●
FIELD													●	●
FLAMIBER (NOT AVAILABLE IN UK)			●	●	●	●		●		●			●	●
LINEN GRID (NOT AVAILABLE IN UK)			●	●	●	●							●	●
LOLA (NOT AVAILABLE IN UK)			●	●	●		●		●		●		●	
MAGLIA			●	●	●	●							●	●
MELANGE NAP					●	●							●	
NICO			●	●	●	●							●	●
OLAVI BY HAY			●	●	●	●	●		●		●	●	●	●
OSUMI			●	●	●	●							●	●
RELATE													●	●
STEELCUT			●	●	●	●		●		●	●	●	●	●
STEELCUT TRIO			●	●	●	●	●		●		●		●	●
TADAO		●	●	●	●							●	●	
FABRIC GROUP 3	COMPOUND		●	●	●	●							●	
	DOT 1682		●	●	●	●							●	●
	DIVINA		●	●	●	●							●	●
	DIVINA MD		●	●	●	●							●	●
	DIVINA MELANGE		●	●	●	●							●	●
	FIORD		●	●	●	●							●	●
	RE-WOOL		●	●	●	●							●	●
	RODEN		●	●	●	●	●		●		●	●	●	●
	RUSKIN		●	●	●	●						●	●	●
	STEELCUT QUARTET		●	●	●	●							●	●
	TARTAGLIA		●	●	●	●							●	●
FABRIC GROUP 4	BOLGHERI		●	●	●	●		●		●			●	●
	CANVAS		●	●	●	●	●	●	●	●	●		●	●
	ENCIRCLE		●	●	●	●							●	●
	HALLINGDAL		●	●	●	●	●		●		●		●	●
	ICE (ONLY AVAILABLE IN UK)		●	●	●	●							●	●
	RAAS		●	●	●	●	●		●		●		●	●
FABRIC GROUP 5	BALDER		●	●	●	●							●	●
	HAKU				●								●	
	HARALD (NOT AVAILABLE IN UK)		●	●	●								●	
	LOFT		●	●	●	●							●	●
	SIERRA LEATHER		●	●	●	●	●		●		●		●	●
FABRIC GROUP 6	CODA		●	●	●	●							●	●
	VIDAR		●	●	●	●							●	●
	CALIFORNIA LEATHER		●	●	●	●							●	
	NEVADA LEATHER		●	●	●	●							●	
	SENSE LEATHER		●	●	●	●	●		●		●	●	●	●
	CHISEL LOUNGE CHAIR SHEEPSKIN													●

\*Selected colours - please see fact sheet for further specifications.

# UPHOLSTERY MATRIX

## SOFAS

		AAL SOFA	ARBOUR & ARBOUR CLUB	CAN*	HACKNEY	MAGS**	MAGS SOFT	MAGS OTTOMAN	MAGS SOFT OTTOMAN
									
FABRIC GROUP 1	ATLAS		●	●	●	●	●	●	●
	LINARA		●	●	●	●	●	●	●
	LINT (NOT AVAILABLE IN UK)		●	●	●	●	●	●	●
	METAPHOR		●	●	●	●	●	●	●
	MODE		●	●	●	●	●	●	●
	PLANAR (NOT AVAILABLE IN UK)		●	●	●	●	●	●	●
	RANDOM FADE		●	●	●	●	●	●	●
	REMIX		●	●	●	●	●	●	●
	SURFACE BY HAY		●	●	●	●	●	●	●
	SWARM		●	●	●	●	●	●	●
	VALENCIA		●	●	●	●	●	●	●
	FABRIC GROUP 2	FAIRWAY		●	●	●	●	●	●
FIELD			●	●	●	●	●	●	●
FLAMIBER (NOT AVAILABLE IN UK)			●	●	●	●	●	●	●
LINEN GRID (NOT AVAILABLE IN UK)			●	●	●	●	●	●	●
LOLA (NOT AVAILABLE IN UK)			●	●	●	●	●	●	●
MAGLIA			●	●	●	●	●	●	●
MELANGE NAP			●	●	●	●	●	●	●
NICO			●	●	●	●	●	●	●
OLAVI BY HAY			●	●	●	●	●	●	●
OSUMI			●	●	●	●	●	●	●
RELATE			●	●	●	●	●	●	●
STEELCUT			●	●	●	●	●	●	●
STEELCUT TRIO			●	●	●	●	●	●	●
TADAO			●	●	●	●	●	●	●
FABRIC GROUP 3	COMPOUND		●	●	●	●	●	●	●
	DOT 1682		●	●	●	●	●	●	●
	DIVINA		●	●	●	●	●	●	●
	DIVINA MD		●	●	●	●	●	●	●
	DIVINA MELANGE		●	●	●	●	●	●	●
	FIORD		●	●	●	●	●	●	●
	RE-WOOL		●	●	●	●	●	●	●
	RODEN		●	●	●	●	●	●	●
	RUSKIN		●	●	●	●	●	●	●
	STEELCUT QUARTET		●	●	●	●	●	●	●
	TARTAGLIA		●	●	●	●	●	●	●
FABRIC GROUP 4	BOLGHERI		●	●	●	●	●	●	●
	CANVAS		●	●	●	●	●	●	●
	ENCIRCLE		●	●	●	●	●	●	●
	HALLINGDAL		●	●	●	●	●	●	●
	ICE (ONLY AVAILABLE IN UK)		●	●	●	●	●	●	●
	RAAS		●	●	●	●	●	●	●
FABRIC GROUP 5	BALDER		●	●	●	●	●	●	●
	HAKU		●	●	●	●	●	●	●
	HARALD (NOT AVAILABLE IN UK)		●	●	●	●	●	●	●
	LOFT		●	●	●	●	●	●	●
	SIERRA LEATHER		●	●	●	●**	●	●	●
FABRIC GROUP 6	CODA		●	●	●	●	●	●	●
	VIDAR		●	●	●	●	●	●	●
	CALIFORNIA LEATHER		●	●	●	●**	●	●	●
	NEVADA LEATHER		●	●	●	●**	●	●	●
	SENSE LEATHER		●	●	●	●**	●	●	●

\*Selected colours - please see fact sheet for further specifications.  
 \*\*Chaise longue- and lounge modules are not available in leather

# UPHOLSTERY MATRIX

## SOFAS



		QUILTON	PANDARINE	SILHOUETTE	SILHOUETTE HIGH
FABRIC GROUP 1	ATLAS	●	●	●	●
	LINARA	●	●	●	●
	LINT (NOT AVAILABLE IN UK)	●	●	●	●
	METAPHOR	●	●	●	●
	MODE	●	●	●	●
	PLANAR (NOT AVAILABLE IN UK)	●	●	●	●
	RANDOM FADE	●	●	●	●
	REMIX	●	●	●	●
	SURFACE BY HAY	●	●	●	●
	SWARM	●	●	●	●
	VALENCIA				
	FABRIC GROUP 2	FAIRWAY	●	●	●
FIELD		●	●	●	●
FLAMIBER (NOT AVAILABLE IN UK)		●	●	●	●
LINEN GRID (NOT AVAILABLE IN UK)			●	●	●
LOLA (NOT AVAILABLE IN UK)			●	●	●
MAGLIA		●	●	●	●
MELANGE NAP		●	●	●	●
NICO		●	●	●	●
OLAVI BY HAY		●	●	●	●
OSUMI		●	●	●	●
RELATE		●	●	●	●
STEELCUT		●	●	●	●
STEELCUT TRIO		●	●	●	●
TADAO		●	●	●	●
FABRIC GROUP 3	COMPOUND	●	●		
	DOT 1682	●	●	●	●
	DIVINA	●	●	●	●
	DIVINA MD	●	●	●	●
	DIVINA MELANGE	●	●	●	●
	FIORD	●	●	●	●
	RE-WOOL	●	●	●	●
	RODEN	●	●	●	●
	RUSKIN	●	●	●	●
	STEELCUT QUARTET	●	●	●	●
	TARTAGLIA	●	●	●	●
FABRIC GROUP 4	BOLGHERI	●	●	●	●
	CANVAS	●	●	●	●
	ENCIRCLE	●	●	●	●
	HALLINGDAL	●	●	●	●
	ICE (ONLY AVAILABLE IN UK)		●	●	●
	RAAS	●	●	●	●
FABRIC GROUP 5	BALDER	●	●	●	●
	HAKU		●	●	●
	HARALD (NOT AVAILABLE IN UK)		●		
	LOFT	●	●	●	●
	SIERRA LEATHER	●	●	●	
FABRIC GROUP 6	CODA	●	●	●	●
	VIDAR	●	●	●	●
	CALIFORNIA LEATHER	●			
	NEVADA LEATHER	●	●	●	
	SENSE LEATHER	●	●	●	