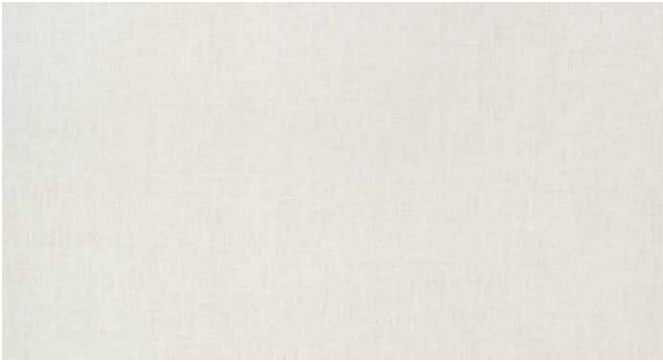


KEEN
Porcelain

 **ARCHITESSA**
an Architectural Ceramics brand



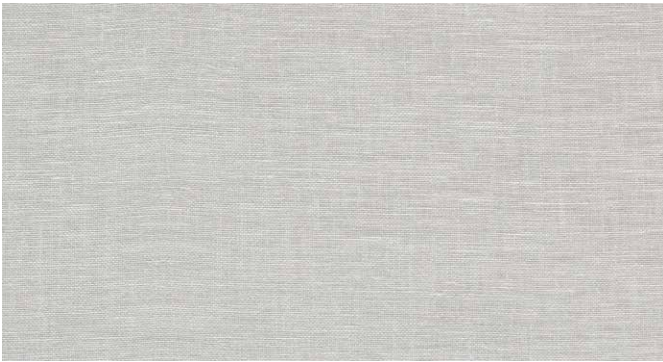
COLORS



White



Taupe



Grey



Beige



Brown

KEEN

 ARCHITESSA
an Architectural Ceramics brand



KEEN White 12x24

www.architessa.com

AVAILABLE SIZES

	FIELD	TRIM
	12x24	3x12 BN
Beige	M	M
Brown	M	M
Grey	M	M
Taupe	M	M
White	M	M

M= Matte

Lead times for specialty & non-stocked items varies depending on product ordered, quantity, and destination. Please contact Architessa to determine the lead time to order samples and material.

DESCRIPTION

KEEN is a fabric look porcelain with a linen texture. Available in five classic colors and two field sizes with a matching bullnose

INSTALLATION & MAINTENANCE

KEEN may be installed using standard porcelain installation methods and materials, as recommended by the Tile Council of North America (TCNA). An Architessa sales representative will advise you on general installation questions.

TECHNICAL INFORMATION

ORIGIN: USA
 AVAILABLE FINISHES: MATTE
 TYPE: PORCELAIN
 EDGE: RECTIFIED
 LOOK: FABRIC
 APPLICATION: WALL & FLOOR
 USE: COMMERCIAL & RESIDENTIAL
 PACKAGING: PLEASE CONSULT YOUR SALES REP
 COLOR VARIATION: V1 - UNIFORM

THICKNESS: 8 MM
 PEI SCALE: N/A
 DCOF: 0.58
 BREAKING STRENGTH: 502 LBS
 WATER ABSORPTION: 0.05%
 STAIN RESISTANCE: YES
 FROST RESISTANCE: YES
 ENVIRONMENT: RECYCLED CONTENT >40%,
 WHITE & TAUPE >11%

CONTACT INFORMATION:

www.architessa.com

1.800.287.1742

For general sales inquiries: sales@architessa.com

For commercial & hospitality sample requests: samples@architessa.com

Headquarters: 1803 Research Blvd. Suite 402 Rockville, MD 20850

