

KEEN
Porcelain

 **ARCHITESSA**
an Architectural Ceramics brand



KEEN

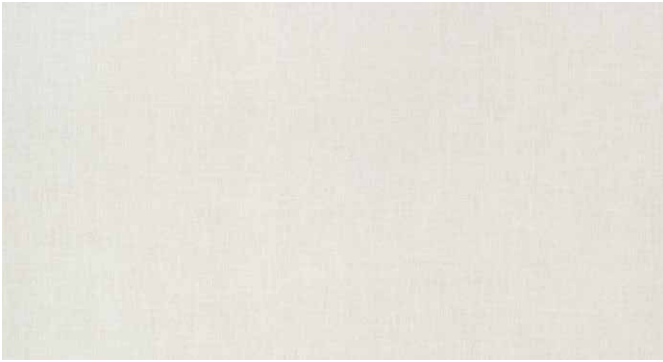
 ARCHITESSA
an Architectural Ceramics brand



KEEN White 12x24

www.architessa.com

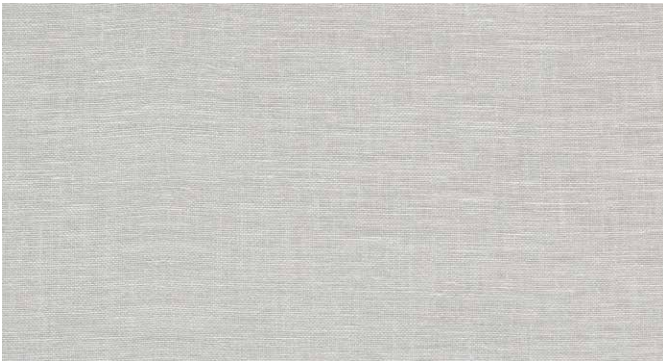
COLORS



White



Taupe



Grey



Beige



Brown

AVAILABLE SIZES

	FIELD	TRIM
	12x24	3x12 BN
Beige	M	M
Brown	M	M
Grey	M	M
Taupe	M	M
White	M	M

M= Matte

Lead times for specialty & non-stocked items varies depending on product ordered, quantity, and destination. Please contact Architessa to determine the lead time to order samples and material.

DESCRIPTION

KEEN is a fabric look porcelain with a linen texture. Available in five classic colors and two field sizes with a matching bullnose.

INSTALLATION & MAINTENANCE

KEEN may be installed using standard porcelain installation methods and materials, as recommended by the Tile Council of North America (TCNA). An Architessa sales representative will advise you on general installation questions.

TECHNICAL INFORMATION

TYPE: GLAZED PORCELAIN

ORIGIN: USA

EDGE: RECTIFIED

THICKNESS: 8MM

LOOK: FABRIC

SHADE VARIATION: 1 - UNIFORM

SURFACE ABRASION: 4

TRAFFIC RATING: COMMERCIAL

DCOF: 0.58

BREAKING STRENGTH: 502 LBF

WATER ABSORPTION: 0.05%

STAIN RESISTANCE: CLASS A

FROST RESISTANCE: YES

ENVIRONMENT: >40% Recycled Content,
>11% (White & Tap Colors), Green Squared
Certified

CONTACT INFORMATION:

www.architessa.com

1.800.287.1742

For general sales inquiries: sales@architessa.com

For commercial & hospitality sample requests: samples@architessa.com

Headquarters: 1803 Research Blvd. Suite 402 Rockville, MD 20850

