

OVERLOOK

Porcelain



ARCHITESSA

an Architectural Ceramics brand





OVERLOOK Grey 24X48 / Blue Glossy 2.5x10 / Blue Matte 2.5x10 / Grey 48X48

OVERLOOK

 ARCHITESSA
an Architectural Ceramics brand



OVERLOOK Blue 32x32

www.architessa.com



OVERLOOK Dolcelinea Black 12x24 / Black 24x24



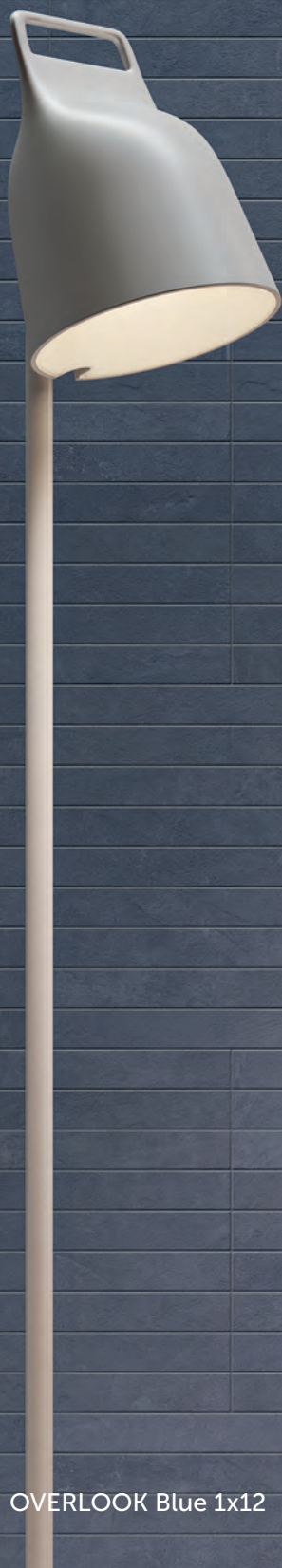
OVERLOOK Glossy 2.5x10



OVERLOOK Grey Incrocio 16x32 / Grey Glossy 2.5x10 / Grey Matte 2.5x10 / Grey 32x32



OVERLOOK Black Glossy 2.5x10 / Black Matte 2.5x10



OVERLOOK Blue 1x12





OVERLOOK Beige 2.5x10

OVERLOOK

 ARCHITESSA
an Architectural Ceramics brand



OVERLOOK White 32x32

www.architessa.com



OVERLOOK Cubo 8x8



OVERLOOK Sagoma 12x12

COLORS



White Matte



White Glossy



Beige Matte



Beige Glossy



Grey Matte



Grey Glossy



Blue Matte



Blue Glossy

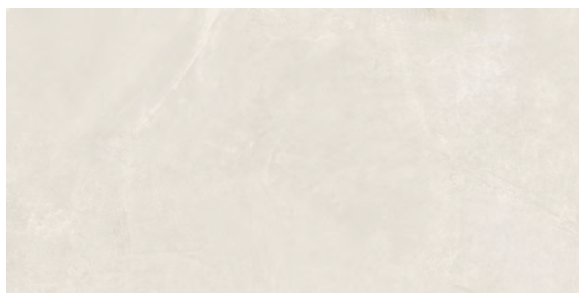


Black Matte

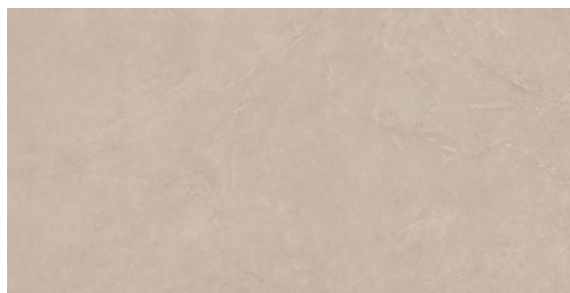


Black Glossy

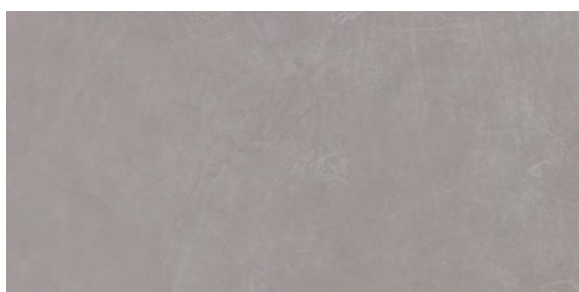
COLORS



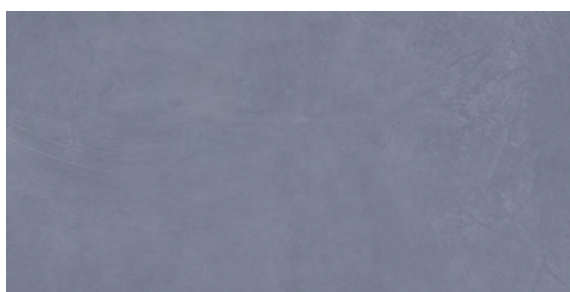
White



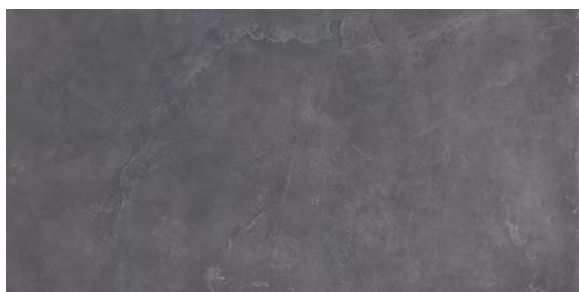
Beige



Grey



Blue



Black

COLORS - DOLCELINEA



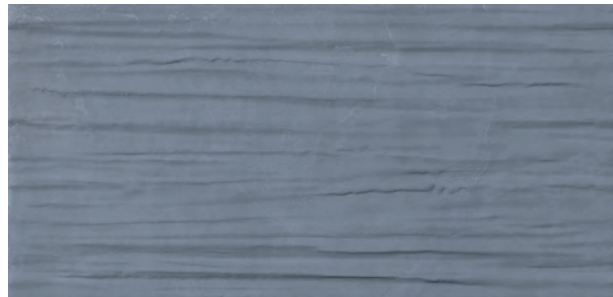
White



Beige



Grey



Blue



Black

COLORS - INCROCI



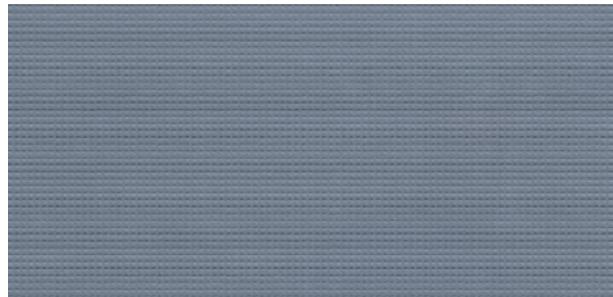
White



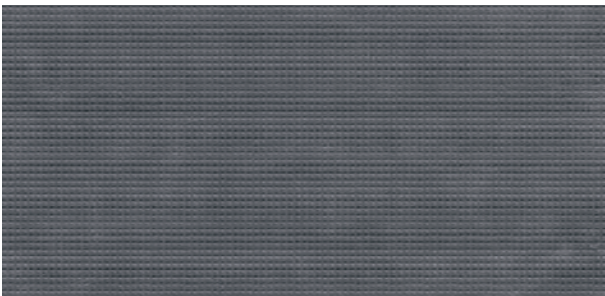
Beige



Grey



Blue



Black

COLORS - DECO



Cubo



Sagoma

AVAILABLE SIZES

	FIELD							
	2.5x10	12x24	12x24 Dolcelinea	24x24	16x32 Incroci	32x32	24x48	48x48
Beige	G*,M*	R9*	R9	R9	R11	R9,R11	R10	R10
Black	G*,M*	R9*	R9	R9	R11	R9,R11	R10	R10
Blue	G*,M*	R9*	R9	R9	R11	R9,R11	R10	R10
Grey	G*,M*	R9*	R9	R9	R11	R9,R11	R10	R10
White	G*,M*	R9*	R9	R9	R11	R9,R11	R10	R10
Multicolor								

	PAVERS		DECO		MOSAIC	
	24x24 20MM	32x32 20MM	8x8 Cubo	12x12 Sagoma	1x1	1x12
Beige					R9, R10	R10
Black					R9, R10	R10
Blue	R11	R11			R9, R10	R10
Grey	R11				R9, R10	R10
White					R9, R10	R10
Multicolor			R10	R10		

G= Glossy, M= Matte, R9= Soft Natural, R10= Natural, R11= Tecnica, *Stocked Sizes | Trims available - ask your rep for info

Lead times for specialty & non-stocked items varies depending on product ordered, quantity, and destination. Please contact Architessa to determine the lead time to order samples and material.

DESCRIPTION

The OVERLOOK collection intends to satisfy the most widely varying contemporary interior design needs. With a covetable and subtle texture, OVERLOOK mimics the look and feel of resin finishes while providing the durability of porcelain tiles.

INSTALLATION & MAINTENANCE

OVERLOOK may be installed using standard porcelain installation methods and materials, as recommended by the Tile Council of North America (TCNA). An Architessa sales representative will advise you on general installation questions.

TECHNICAL INFORMATION

TYPE: COLOR BODY PORCELAIN

ORIGIN: ITALY

EDGE: RECTIFIED, NON-RECTIFIED

THICKNESS: 10MM, 6.5MM, 20MM PAVER

LOOK: MONOCHROMATIC

SHADE VARIATION: 1 - UNIFORM

SURFACE ABRASION: N/A

TRAFFIC RATING: HEAVY COMMERCIAL, MEDIUM TRAFFIC (MATTE BRICK), INTERIOR WALL (LUX MAJOLICA BRICK)

DCOF: >.42 SOFT, >.50 NATURAL, >.65 TECNICA

BREAKING STRENGTH: 250LBS (6.5MM), 400LBS (9.5MM), 2,500LBS (20MM)

WATER ABSORPTION: >0..5%

STAIN RESISTANCE: YES

FROST RESISTANCE: YES (EXCEPT MAJOLICA)

ENVIRONMENT: 20% PRE-CONSUMER RECYCLED CONTENT (20MM), 9.5MM = 12%, GREEN GUARD GOLD CERTIFIED, EPD

CONTACT INFORMATION:

www.architessa.com

1.800.287.1742

For general sales inquiries: sales@architessa.com

For commercial & hospitality sample requests: samples@architessa.com

Headquarters: 1803 Research Blvd. Suite 402 Rockville, MD 20850