



THE LAUREN LIESS VERANDA SERIES

Natural Stone tiles are a wonderful option for those seeking an authentic, timeless look. From tumbled slate to classic marble, Lauren has curated a gorgeous selection that highlights both the strength and weathered appeal of stone.

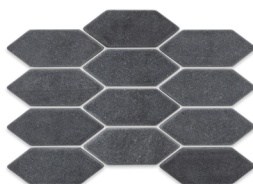
VERANDA SLATE



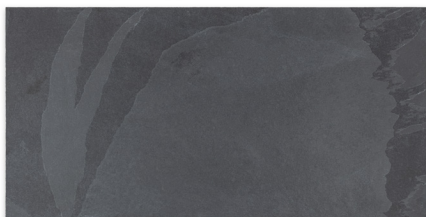
Lauren's go-to tile for modern and traditional interiors alike – Veranda slate tiles are tumbled to make each and every piece one-of-a-kind. When combined with other tiles, the tumbled edges create a natural-feeling textural variation. The clefted edge variety does much the same to create a raw, natural look you'll love.



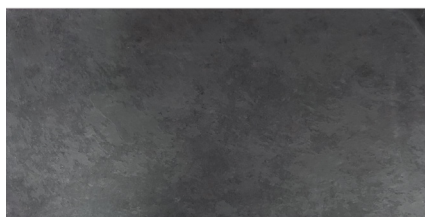
4"x 4" Tumbled Slate



1.5"x 4" Picket Tumbled Mosaic



12"x 24" Cleft Slate



12"x 24" Brushed Slate

VERANDA MARBLE

Lauren loves to bring a sense of age into homes whenever possible. Incorporating antique stone into a space is a sure way to add a feeling of history. Antiqued Veranda marble tiles do just that.



10"x 10" Antiqued White Marble



10"x 10" Antiqued Grey Marble



TECHNICAL & CARE INFO

Natural Stone Series

Natural stone tile may be installed using standard tile installation methods and materials, as recommended by the Tile Council of North America (TCNA). An Architectural Ceramics representative can advise you on general installation questions.

VERANDA - Slate

STONE NAME	Black Slate
ORIGIN	Brazil
TYPE	Slate
FINISHES	Natural Cleft, Brushed, Tumbled
VARIATION	V2 slight variation
EXTERIOR USE	No
THICKNESS	3/8"
NEEDS SEALED	Yes

VERANDA - Marble

STONE NAME	Antiqued Marble
ORIGIN	Turkey
TYPE	Marble
FINISHES	Antiqued
VARIATION	V2 slight variation
EXTERIOR USE	No
THICKNESS	3/4"
NEEDS SEALED	Yes