

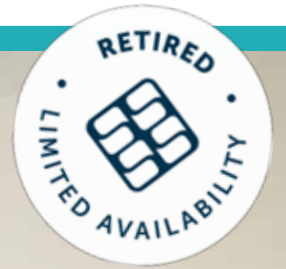
TECHNICOLOR

Porcelain



ARCHITESSA

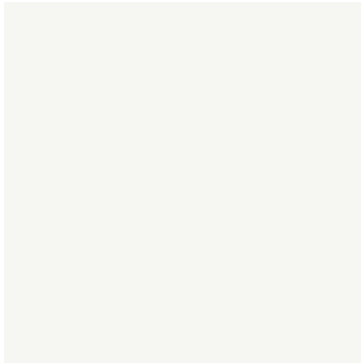
an Architectural Ceramics brand



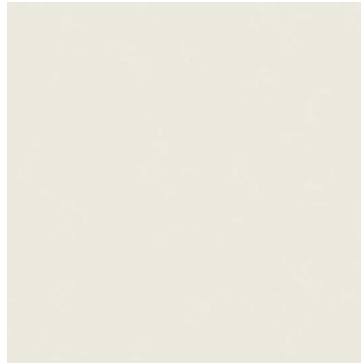


TECHNICOLOR 12x12 Grigio

COLORS



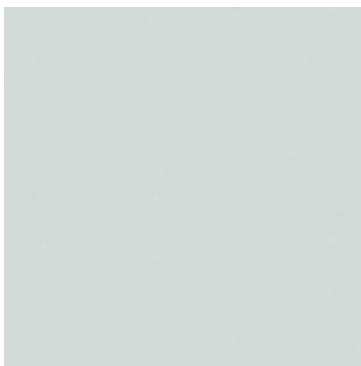
Super White



Avorio



Beige



Silver Gray



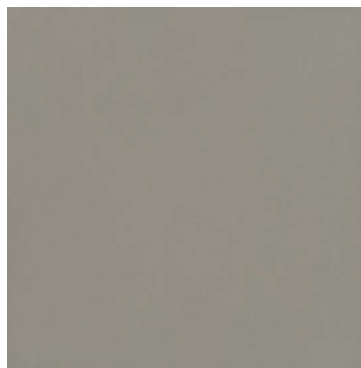
Ash Gray



Blue



Grigio



Tobacco



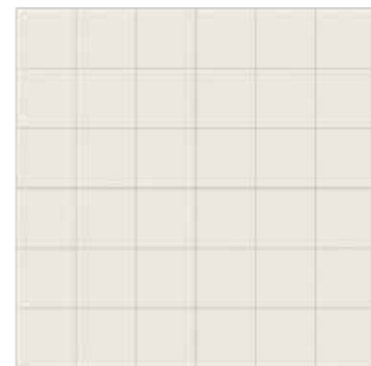
Nero



Super Black



16x19 Linear Mosaic
AVAILABLE IN ALL COLORS



2x2 Mosaic
AVAILABLE IN MOST COLORS

AVAILABLE SIZES

	FIELD				MOSAICS		TRIM		
	24x24	12x24	6x24	12x12	2x2	13x19 Linear	4x12 BN	6x12 CB	1x6 C Corner
Super White	M, P	M*	M, P	M, P	M*	M	M	M	M
Avorio	M, P	M, P	M, P	M, P	M	M	M	M	M
Beige	M, P	M, P	M, P	M, P	M	M	M	M	M
Silver Gray	M, P	M, P	M, P	M, P	M	M	M	M	M
Ash Gray	M, P	M*, P*	M, P	M, P	M+	M	M	M	M
Blue	M, P	M, P	M, P	M, P	M	M	M	M	M
Grigio	M, P	M, P	M, P	M, P	M	M	M	M	M
Tobacco	M, P	M, P	M, P	M, P	M	M	M	M	M
Nero	M, P	M, P	M, P	M, P	M	M	M	M	M
Black	M, P	M, P	M, P	M, P	M	M	M	M	M

M=Matte finish, P=Polished finish, *Stocked Sizes +Discontinued

◇ Special Order from overseas with extended lead times. Please consult with a sales rep for sample & product availability.

Lead times for specialty & non-stocked items varies depending on product ordered, quantity, and destination. Please contact Architessa to determine the lead time to order samples and material.

DESCRIPTION

From super white and black to of-the-moment light blue, the hues found in TECHNICOLOR make up a designer's go-to palette. This minimalist porcelain tile has a versatile size package including planks and rectangles.

INSTALLATION & MAINTENANCE

TECHNICOLOR may be installed using standard porcelain installation methods and materials, as recommended by the Tile Council of North America (TCNA). An Architessa sales representative will advise you on general installation questions.

TECHNICAL INFORMATION

ORIGIN: CHINA
 AVAILABLE FINISHES: MATTE, POLISHED
 TYPE: PORCELAIN
 EDGE: RECTIFIED
 LOOK: MONOCHROMATIC, SOLID
 APPLICATION: WALL & FLOOR
 USE: COMMERCIAL & RESIDENTIAL
 PACKAGING: PLEASE CONSULT YOUR SALES REP
 COLOR VARIATION: V1 - UNIFORM

THICKNESS: 9.5 MM (MATTE), 8.8MM (POLISHED)
 PEI SCALE: N/A
 DCOF: >.42
 BREAKING STRENGTH: COMPLIANT TO ATSM C-648
 >450 LBS
 WATER ABSORPTION: <0.5%
 STAIN RESISTANCE: YES
 FROST RESISTANCE: YES
 ENVIRONMENT: N/A

CONTACT INFORMATION:

www.architessa.com

1.800.287.1742

For general sales inquiries: sales@architessa.com

For commercial & hospitality sample requests: samples@architessa.com

Headquarters: 1803 Research Blvd. Suite 402 Rockville, MD 20850