

ULTIMATE

Porcelain



ARCHITESSA

an Architectural Ceramics brand





ULTIMATE Absolute Black 12x24

ULTIMATE

 ARCHITESSA
an Architectural Ceramics brand



ULTIMATE Absolute Perla 12x24

www.architessa.com

COLORS



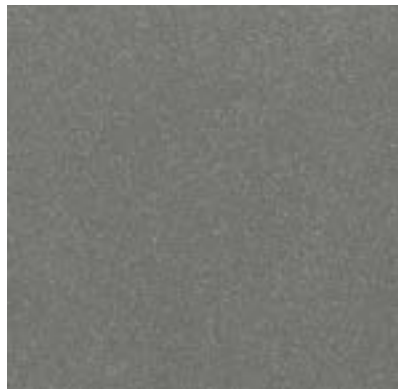
Perla



Crema



Delorian Grey



Ocean Storm



Absolute Black

AVAILABLE SIZES

	FIELD		MOSAICS					
	24x24	12x24	1x1 Diamond	3x3 Classic	1x2 Herringbone	1x12 Lines	1x2 Brick	3x6 Brick
Absolute Black	H, P	H, P	H, P	H, P	H, P	H, P	H, P	H, P
Crema	H, P	H, P	H, P	H, P	H, P	H, P	H, P	H, P
Delorian Grey	H, P	H, P	H, P	H, P	H, P	H, P	H, P	H, P
Ocean Storm	H, P	H, P	H, P	H, P		H, P	H, P	H, P
Perla	H, P	H, P	H, P	H, P	H, P	H, P	H, P	H, P

	TRIM						
	3x12 Bullnose	3x12 Double Bullnose Left	3x12 Double Bullnose Right	6x12 Cove Base	12x12 Stair Tread	1x6 Inside Corner	1x6 Outside Corner
Absolute Black	H, P	H, P	H, P	H	H	H	H
Crema	H, P	H, P	H, P	H	H	H	H
Delorian Grey	H, P	H, P	H, P	H	H	H	H
Ocean Storm	H, P	H, P	H, P	H	H	H	H
Perla	H, P	H, P	H, P	H	H	H	H

H=Honed, P=Polished

Lead times for specialty & non-stocked items varies depending on product ordered, quantity, and destination. Please contact Architessa to determine the lead time to order samples and material.

DESCRIPTION

ULTIMATE is a comprehensive porcelain collection of ten colors, multiple finishes, and endless mosaics. Create visual appeal by layering colors and finishes in your residential or commercial installation with our ULTIMATE collection.

INSTALLATION & MAINTENANCE

ULTIMATE may be installed using standard ceramic tile installation methods and materials, as recommended by the Tile Council of North America (TCNA). An Architessa sales representative will advise you on general installation questions.

TECHNICAL INFORMATION

TYPE: UNGLAZED PORCELAIN
 ORIGIN: ITALY
 EDGE: RECTIFIED
 THICKNESS: 9MM
 LOOK: MARBLE, STONE
 SHADE VARIATION: V2 - SLIGHT VARIATION
 SURFACE ABRASION: 4
 TRAFFIC RATING: COMMERCIAL & RESIDENTIAL

DCOF: ≥ 0.42 HONED
 BREAKING STRENGTH: >250 LBS
 WATER ABSORPTION: $\leq 0.1\%$
 STAIN RESISTANCE: YES
 FROST RESISTANCE: YES
 ENVIRONMENT: $\geq 11\%$ PRE-CONSUMER RECYCLED CONTENT, GREEN SQUARED, GREENGUARD, EPD

CONTACT INFORMATION:

www.architessa.com

1.800.287.1742

For general sales inquiries: sales@architessa.com

For commercial & hospitality sample requests: samples@architessa.com

Headquarters: 1803 Research Blvd. Suite 402 Rockville, MD 20850