

MUD
Porcelain

 **ARCHITESSA**
an Architectural Ceramics brand





MUD

 ARCHITESSA
an Architectural Ceramics brand



MUD Boheme

www.architessa.com

MUD

 ARCHITESSA
an Architectural Ceramics brand



MUD Grey

www.architessa.com



MUD Boheme, Teal, Old White

MUD

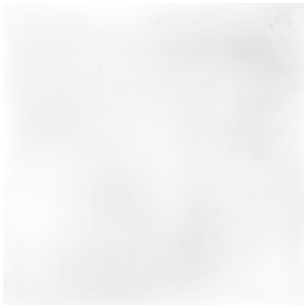
 ARCHITESSA
an Architectural Ceramics brand



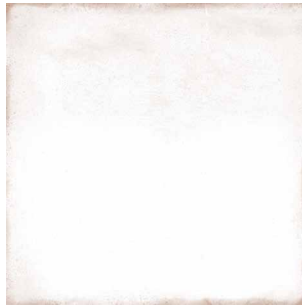
MUD Paths

www.architessa.com

COLORS



Pure White



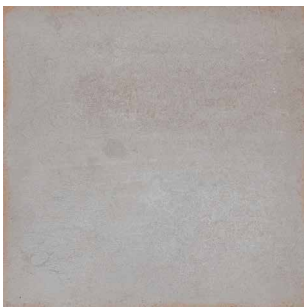
Old White



Pottery



Terra



Grey



Teal



Boheme

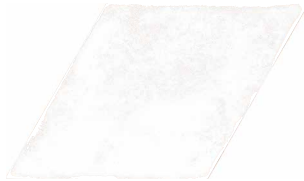


Graphite

COLORS



Pure White



Old White



Pottery



Terra



Grey



Teal

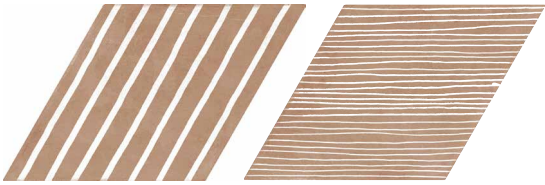


Boheme



Graphite

PATHS DIAMONDS



Paths

(6 piece range)

AVAILABLE SIZES

	FIELD	DIAMOND	TRIM
	5x5	5x9.5	0.43x5.5
Boheme	M	M	M
Graphite	M	M	M
Grey	M	M	M
Old White	M	M	M
Paths		M	
Pottery	M	M	M
Pure White	M	M	M
Teal	M	M	M
Terra	M	M	M

M= Matte

Lead times for specialty & non-stocked items varies depending on product ordered, quantity, and destination. Please contact Architessa to determine the lead time to order samples and material.

DESCRIPTION

MUD reconnects us to natural materials. These complementary square and diamond-shaped porcelain tiles showcase an organic color palette linked by earth and two traditional decors: "paths" and "pottery". Three wooden diamond colors: Light, Mid & Dark adding a touch of warmth to the range.

INSTALLATION & MAINTENANCE

MUD may be installed using standard ceramic tile installation methods and materials, as recommended by the Tile Council of North America (TCNA). An Architessa sales representative will advise you on general installation questions.

TECHNICAL INFORMATION

TYPE: GLAZED PORCELAIN
 ORIGIN: SPAIN
 EDGE: PRESSED
 THICKNESS: 8.5 MM
 LOOK: TERRACOTTA
 SHADE VARIATION: 3 - MODERATE VARIATION
 SURFACE ABRASION: N/A
 TRAFFIC RATING: HEAVY RESIDENTIAL & LIGHT COMMERCIAL

DCOF: N/A
 BREAKING STRENGTH: N/A
 WATER ABSORPTION: <.5%
 STAIN RESISTANCE: YES
 FROST RESISTANCE: YES
 ENVIRONMENT: 62% RECYCLED CONTENT, EPD, LBC
 RED LIST FREE

CONTACT INFORMATION:

www.architessa.com

1.800.287.1742

For general sales inquiries: sales@architessa.com

For commercial & hospitality sample requests: samples@architessa.com

Headquarters: 1803 Research Blvd. Suite 402 Rockville, MD 20850