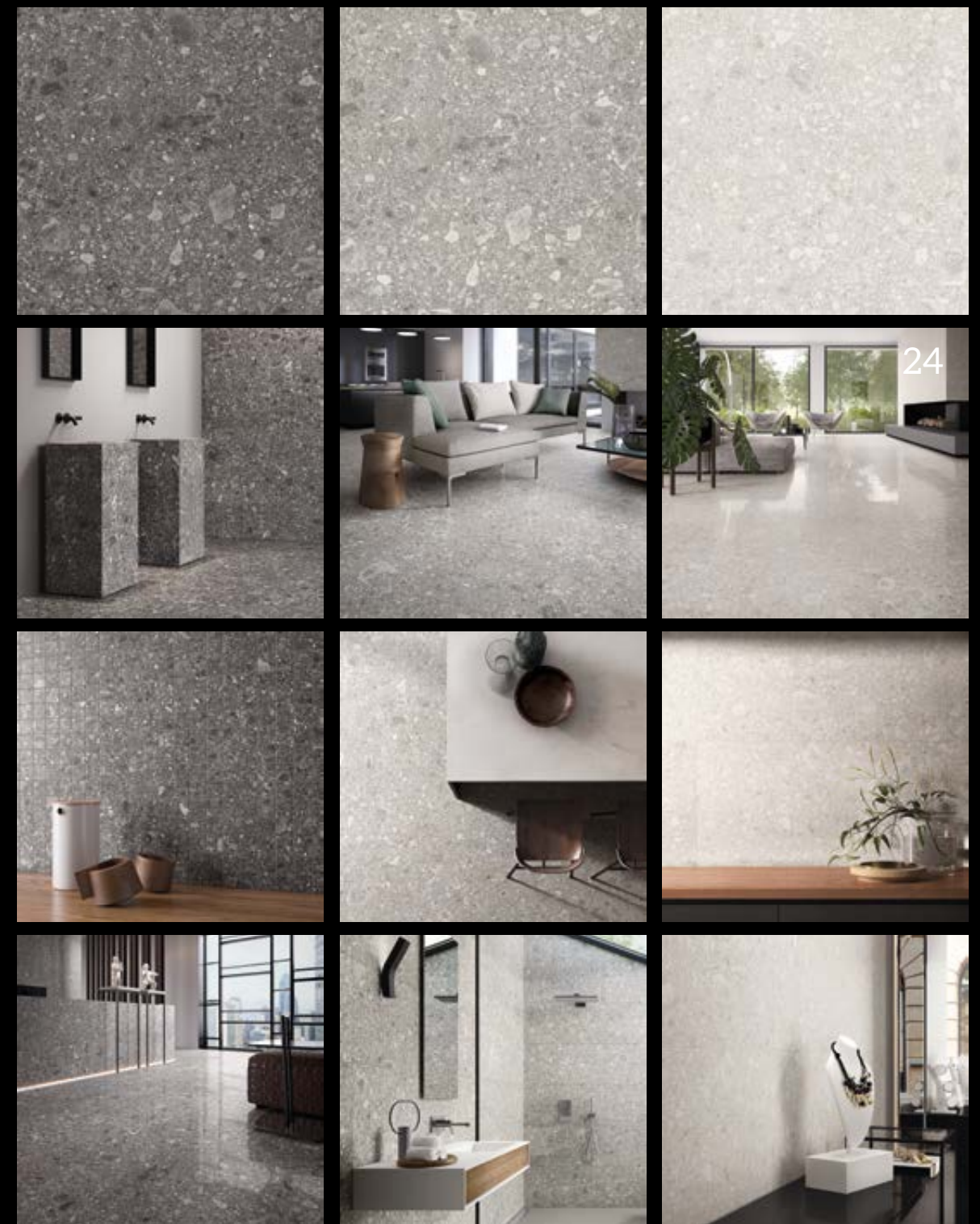


TEMPO
Porcelain

ARCHITECTURAL
CERAMICS



TEMPO



NERO

GRIGIO

BIANCO

TEMPO



90x90 35 ^{7/16} "x35 ^{7/16} "	
45x90 17 ^{11/16} "x35 ^{7/16} "	
30x60 11 ^{13/16} "x23 ^{5/8} "	60x60 23 ^{5/8} "x23 ^{5/8} "

SIZES

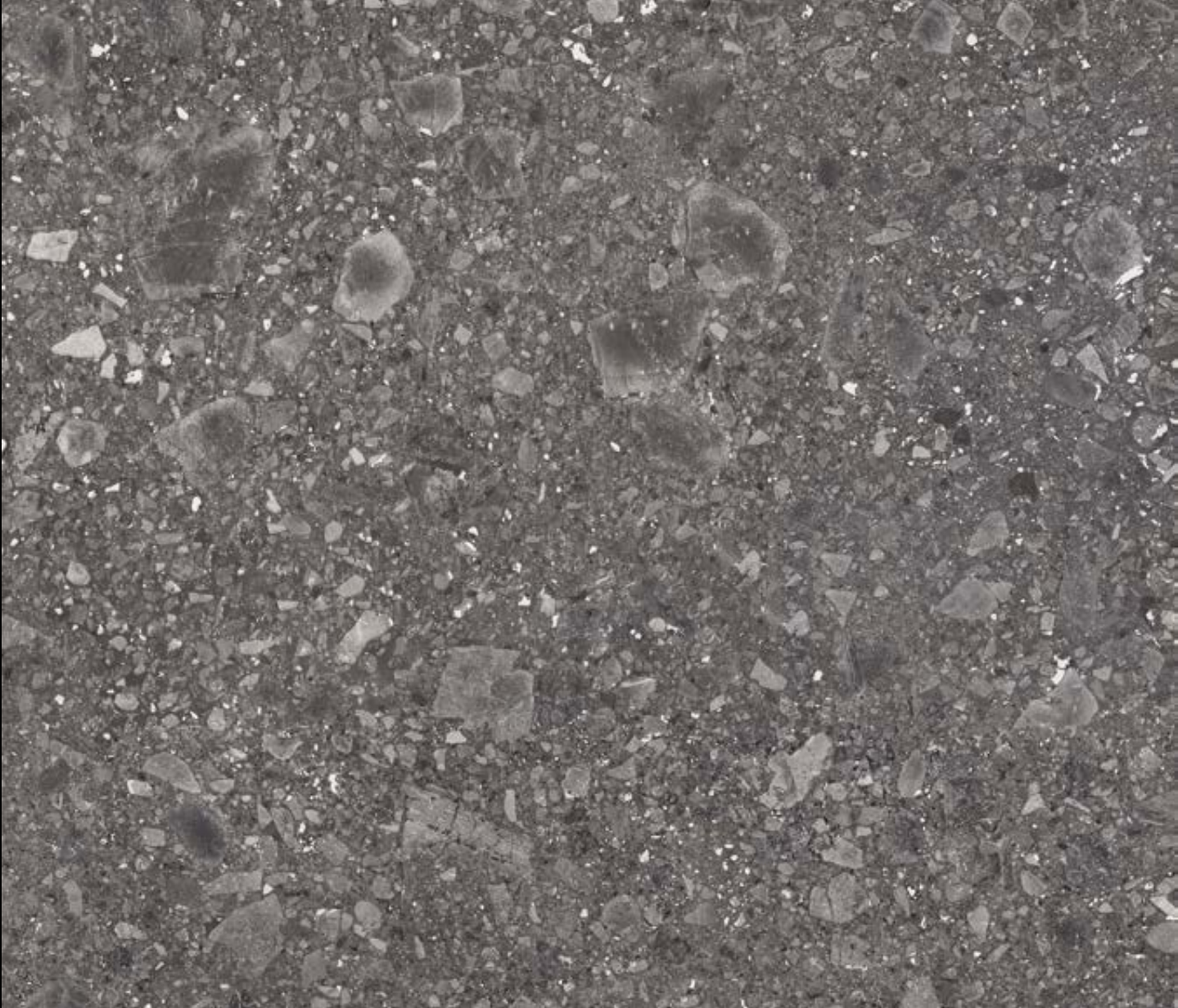


SURFACES

naturale
lappato



NERO NAT. RETT. 60X60 (23^{5/8}" X 23^{5/8}")
NERO NAT. RETT. 30X60 (11^{13/16}" X 23^{5/8}")



TEMPO



NERO NAT. RETT. 60X60 (23^{5/8}"X23^{5/8}")
NERO NAT. RETT. 30X60 (11^{13/16}"X23^{5/8}")

ARCHITECTURAL CERAMICS **AC**

nero

nero

NERO NAT. RETT. 60X60 (23^{5/8}"X23^{5/8}")
NERO NAT. RETT. 30X60 (11^{13/16}"X23^{5/8}")
MOSAICO 30X30 (11^{13/16}"X11^{13/16}")





NERO LAPP. RETT. 90X90 (35^{7/16}" X 35^{7/16}")
NERO NAT. RETT. 90X90 (35^{7/16}" X 35^{7/16}")
NERO NAT. RETT. 45X90 (17^{11/16}" X 35^{7/16}")

nero



GRIGIO NAT. RETT. 90X90 (35^{7/16}" X 35^{7/16}")
GRIGIO NAT. RETT. 45X90 (17^{11/16}" X 35^{7/16}")



TEMPO



GRIGIO NAT. RETT. 90X90 (35^{7/16}"X35^{7/16}")
GRIGIO NAT. RETT. 45X90 (17^{11/16}"X35^{7/16}")

ARCHITECTURAL
CERAMICS **AC**

grigio

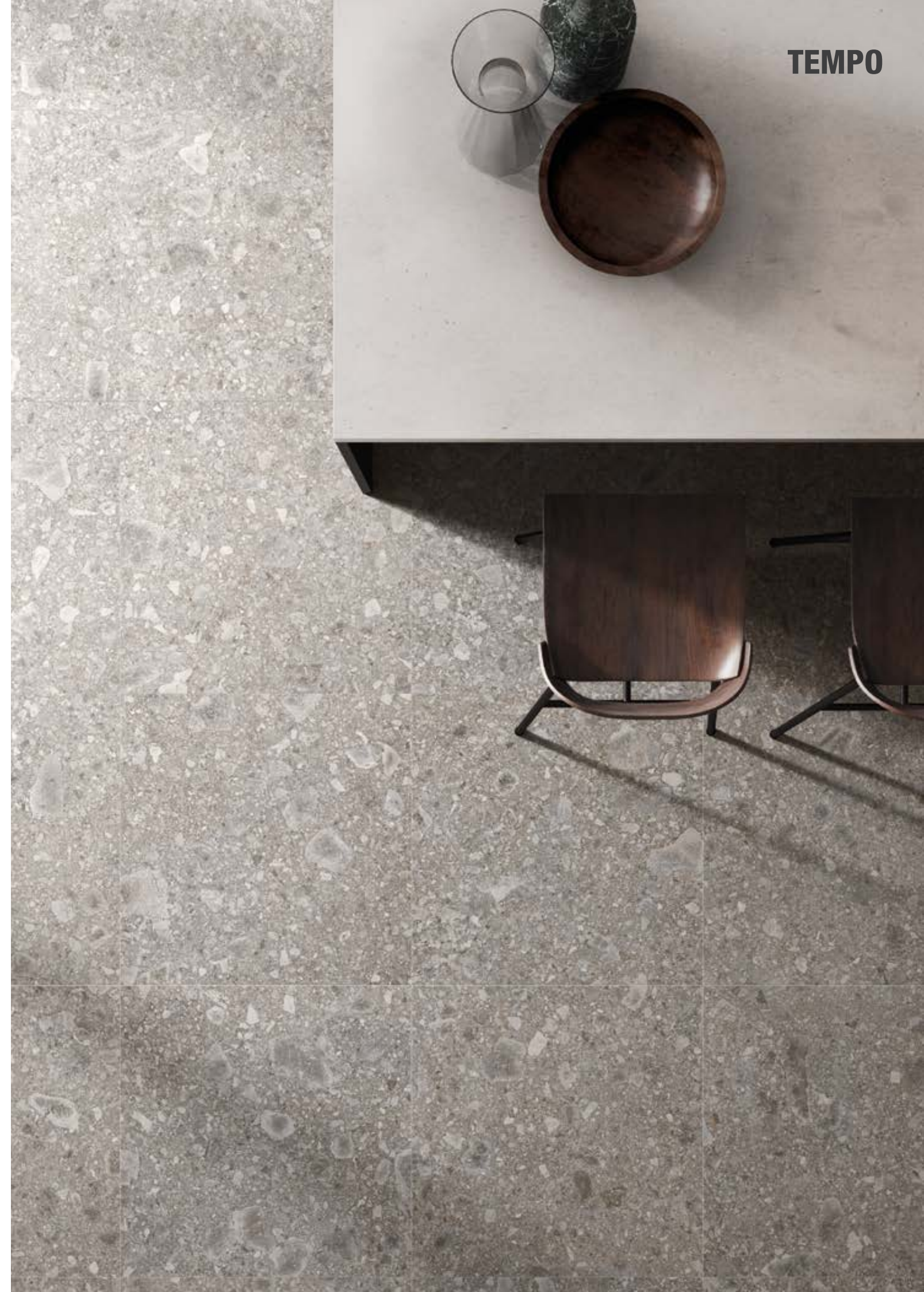


GRIGIO LAPP. RETT. 60X60 (23 5/8" X 23 5/8")
GRIGIO NAT. RETT. 30X60 (11 13/16" X 23 5/8")

ARCHITECTURAL CERAMICS 

grigio

GRIGIO LAPP. RETT. 60X60 (23^{5/8}" X 23^{5/8}")
GRIGIO NAT. RETT. 30X60 (11^{13/16}" X 23^{5/8}")





GRIGIO NAT. RETT. 90X90 (35^{7/16}"X35^{7/16}"")
GRIGIO NAT. RETT. 45X90 (17^{11/16}"X35^{7/16}"")

ARCHITECTURAL CERAMICS 

grigio

bianco

BIANCO LAPP. RETT. 90X90 (35^{7/16}" X 35^{7/16}")
BIANCO NAT. RETT. 30X60 (11^{13/16}" X 23^{5/8}")



TEMPO

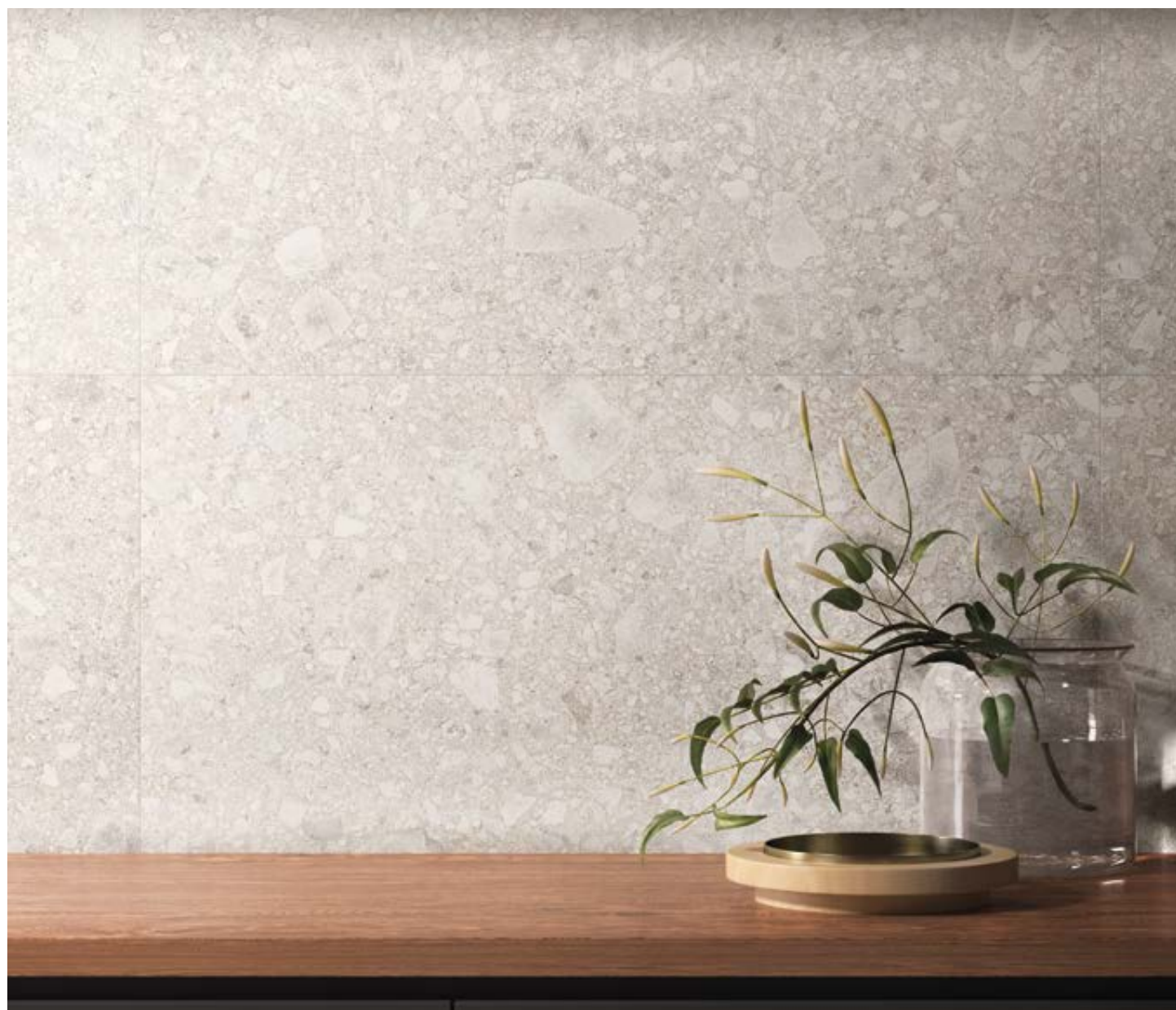


BIANCO LAPP. RETT. 90X90 (35⁷/₁₆"X35⁷/₁₆")
BIANCO NAT. RETT. 30X60 (11¹³/₁₆"X23⁵/₈")

ARCHITECTURAL CERAMICS 

bianco

BIANCO NAT. RETT. 45X90
(17^{11/16}" X 35^{7/16}")

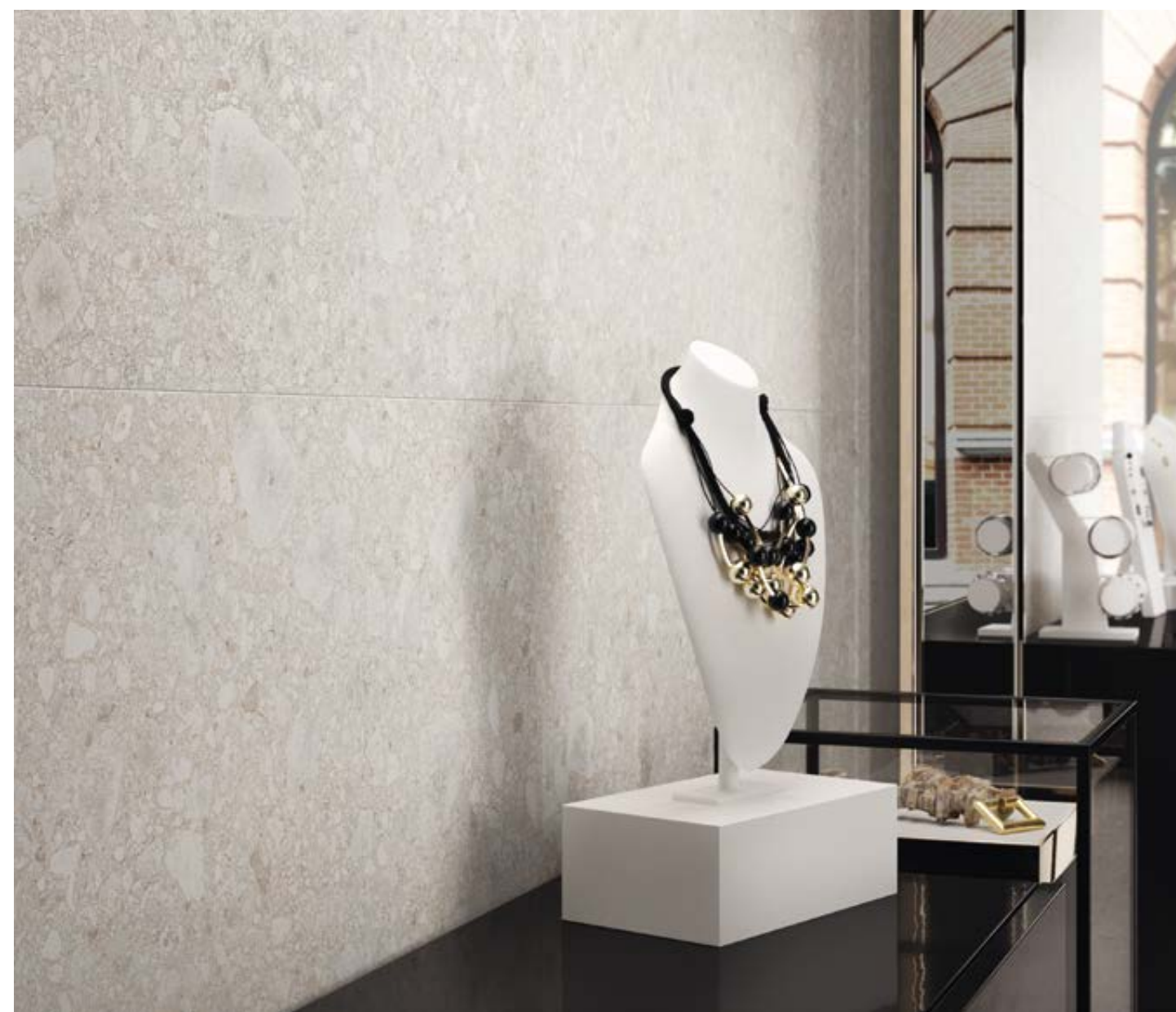


bianco



BIANCO NAT. RETT. 90X90
(35^{7/16}" X 35^{7/16}")

BIANCO NAT. RETT. 45X90
(17^{11/16}" X 35^{7/16}")





BIANCO NAT. RETT. 90X90 (35⁷/₁₆"X35⁷/₁₆")
BIANCO NAT. RETT. 45X90 (17¹¹/₁₆"X35⁷/₁₆")



TEMPO



20MM

ARCHITECTURAL CERAMICS **AC**

grigio

20MM

TEMPO



Tempo 20MM offers the chance to develop extremely aesthetically pleasing external spaces without compromising on technical expertise.

The specific qualities of **Tempo 20MM** allow you to perfectly integrate the material in the surrounding environment, making it possible to create walkways and outdoor paths easily and effectively.

The thickness of **Tempo 20MM** guarantees excellent resistance, making it ideal for use in both indoor and outdoor public spaces.

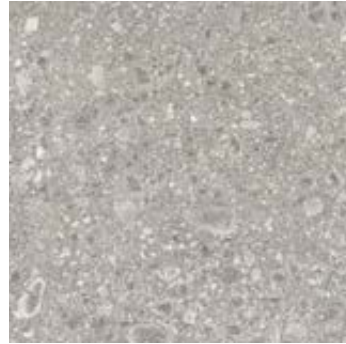
Tempo 20MM is easy to lay on grass, sand and gravel.

By gluing it down to screed it is possible to create industrial and commercial paved driveways. Ideal for access ramps and garages.

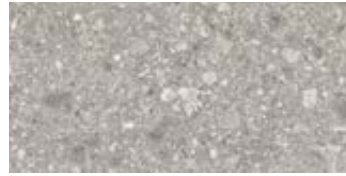
Tempo 20MM is ideal for the creation of cavity floors.



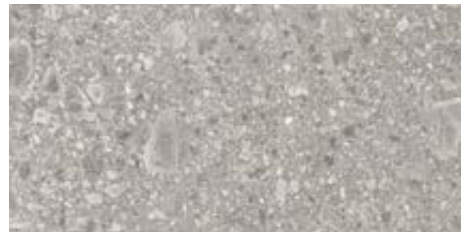
GRIGIO



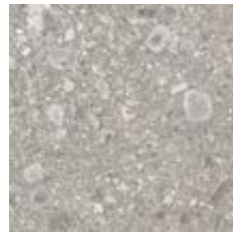
90x90 (35^{7/16}"x35^{7/16}")
E06P GRIGIO NAT. RETT. ● 91
E076 GRIGIO LAPP. RETT. ● 98



45x90 (17^{11/16}"x35^{7/16}")
E06K GRIGIO NAT. RETT. ● 77
E071 GRIGIO LAPP. RETT. ● 87



60x120 (23^{5/8}"x47^{1/4}")
E089 GRIGIO NAT. RETT. ● 89



60x60 (23^{5/8}"x23^{5/8}")
E06F GRIGIO NAT. RETT. ● 73
E06X GRIGIO LAPP. RETT. ● 83



30x60 (11^{13/16}"x23^{5/8}")
E06A GRIGIO NAT. RETT. ● 66
E06T GRIGIO LAPP. RETT. ● 74

Mosaico 5x5*



30x30 (11^{13/16}"x11^{13/16}")
E0JZ GRIGIO NAT. ● 131
E0K3 GRIGIO LAPP. ● 134

Listelli sfalsati*



30x60 (11^{13/16}"x23^{5/8}")
EDH9 GRIGIO NAT. ● 113
EDHE GRIGIO LAPP. ● 118

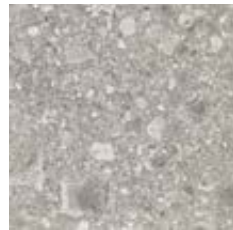
* Su rete in fibra
 On fibre mesh backing
 Sur filet en fibre de verre
 Auf Glasfasernetz
 Sobre malla de fibra
 На волоконной сетке

20MM



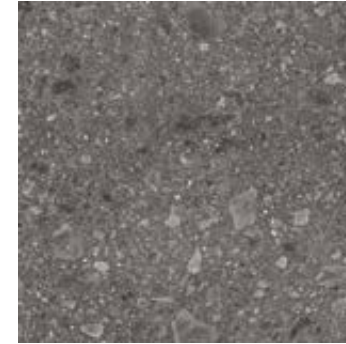
40x120 (15^{3/4}"x47^{1/4}")
E08E GRIGIO NAT. RETT. ● 118

20MM

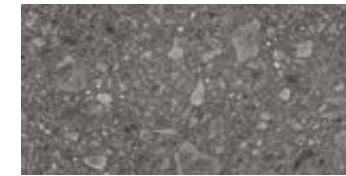


60x60 (23^{5/8}"x23^{5/8}")
E08C GRIGIO NAT. RETT. ● 97

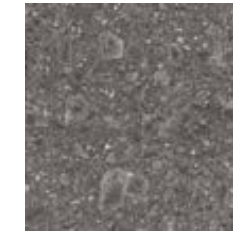
NERO



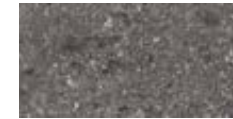
90x90 (35^{7/16}"x35^{7/16}")
E06Q NERO NAT. RETT. ● 91
E077 NERO LAPP. RETT. ● 98



45x90 (17^{11/16}"x35^{7/16}")
E06L NERO NAT. RETT. ● 77
E072 NERO LAPP. RETT. ● 87



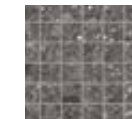
60x60 (23^{5/8}"x23^{5/8}")
E06G NERO NAT. RETT. ● 73
E06Y NERO LAPP. RETT. ● 83



30x60 (11^{13/16}"x23^{5/8}")
E06C NERO NAT. RETT. ● 66
E06U NERO LAPP. RETT. ● 74

Mosaico 5x5*

Tessera - Chip 4,8x4,8 (1^{7/8}"x1^{7/8}")



30x30 (11^{13/16}"x11^{13/16}")
E0K0 NERO NAT. ● 131
E0K4 NERO LAPP. ● 134

Listelli sfalsati*



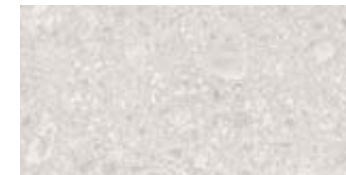
30x60 (11^{13/16}"x23^{5/8}")
EDHA NERO NAT. ● 113
EDHF NERO LAPP. ● 118

* Su rete in fibra
 On fibre mesh backing
 Sur filet en fibre de verre
 Auf Glasfasernetz
 Sobre malla de fibra
 На волоконной сетке

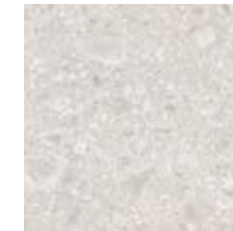
BIANCO



90x90 (35^{7/16}"x35^{7/16}")
E06N BIANCO NAT. RETT. ● 91
E075 BIANCO LAPP. RETT. ● 98



45x90 (17^{11/16}"x35^{7/16}")
E06J BIANCO NAT. RETT. ● 87
E070 BIANCO LAPP. RETT. ● 77



60x60 (23^{5/8}"x23^{5/8}")
E06E BIANCO NAT. RETT. ● 73
E06W BIANCO LAPP. RETT. ● 83



30x60 (11^{13/16}"x23^{5/8}")
E069 BIANCO NAT. RETT. ● 66
E06S BIANCO LAPP. RETT. ● 74

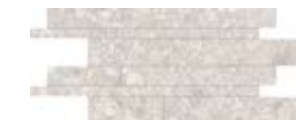
Mosaico 5x5*

Tessera - Chip 4,8x4,8 (1^{7/8}"x1^{7/8}")



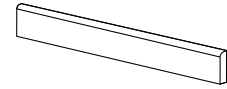
30x30 (11^{13/16}"x11^{13/16}")
E0JY BIANCO NAT. ● 131
E0K2 BIANCO LAPP. ● 134

Listelli sfalsati*



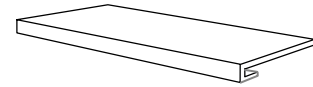
30x60 (11^{13/16}"x23^{5/8}")
EDH8 BIANCO NAT. ● 113
EDHD BIANCO LAPP. ● 118

* Su rete in fibra
 On fibre mesh backing
 Sur filet en fibre de verre
 Auf Glasfasernetz
 Sobre malla de fibra
 На волоконной сетке



BATTISCOPA - SKIRTING
7,5x60 (2¹⁵/₁₆"x23⁵/₈")
Pcs. Box 15 - Ml. x Box 9

- E0HX NERO NAT. RETT.** ● 16
- E0HW GRIGIO NAT. RETT.** ● 16
- E0HV BIANCO NAT. RETT.** ● 16



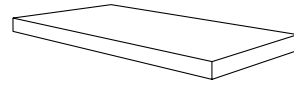
GRADONE - STEP
33x60x3,2x3,2 (12¹⁵/₁₆"x23⁵/₈"x1¹/₄"x1¹/₄")
Pcs. Box 4 - Ml. x Box 2,40

- E0J9 NERO NAT. RETT.** ● 89
- E0J8 GRIGIO NAT. RETT.** ● 89
- E0J7 BIANCO NAT. RETT.** ● 89
- E0JE NERO LAPP. RETT.** ● 95
- E0JD GRIGIO LAPP. RETT.** ● 95
- E0JC BIANCO LAPP. RETT.** ● 95



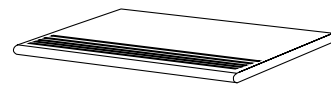
BATTISCOPA - SKIRTING
4,6x90 (1¹³/₁₆"x35⁷/₁₆")
Pcs. Box 8 - Ml. x Box 7,20

- E0J1 NERO NAT. RETT.** ● 23
- E0JD GRIGIO NAT. RETT.** ● 23
- E0HZ BIANCO NAT. RETT.** ● 23



ANGOLARE DX / SX - CORNER TILE DX / SX
33x60x3,2x3,2 (12¹⁵/₁₆"x23⁵/₈"x1¹/₄"x1¹/₄")
Pcs. Box 2 - Ml. x Box 1,20

- E0JJ / E0JN NERO NAT. RETT.** ● 129
- E0JH / E0JM GRIGIO NAT. RETT.** ● 129
- E0JG / E0JL BIANCO NAT. RETT.** ● 129
- E0JS / E0JW NERO LAPP. RETT.** ● 133
- E0JR / E0JV GRIGIO LAPP. RETT.** ● 133
- E0JQ / E0JU BIANCO LAPP. RETT.** ● 133



GRADINO - STAIR TREAD
33x60 (12¹⁵/₁₆"x23⁵/₈")
Pcs. Box 4 - Ml. x Box 2,40

- E0J5 NERO NAT. RETT.** ● 56
- E0J4 GRIGIO NAT. RETT.** ● 56
- E0J3 BIANCO NAT. RETT.** ● 56

20MM

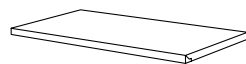


GRADONE STEP
33x60x5 - 11¹³/₁₆"x23⁵/₈"x1¹⁵/₁₆"
Pcs. Box 2 - ML x Box 1,20

- EG8Q GRIGIO NAT. RETT.** ● 99

33x120x5 - 12¹⁵/₁₆"x47¹/₄"x1¹⁵/₁₆"
Pcs. Box 1 - Ml. x Box 1,20

- EG8S GRIGIO NAT. RETT.** ● 139

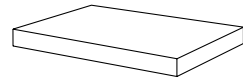


TERMINALE ENDINGPIECE
33x60x2,5 - 12¹⁵/₁₆"x23⁵/₈"x1¹⁵/₁₆"
Pcs. Box 2 - ML x Box 1,20

- EG92 GRIGIO NAT. RETT.** ● 99

33x120x2,5 - 12¹⁵/₁₆"x47¹/₄"x1¹⁵/₁₆"
Pcs. Box 1 - Ml. x Box 1,20

- EG94 GRIGIO NAT. RETT.** ● 139



ANGOLARE DX / SX CORNER TILE DX / SX
33x60x5 - 11¹³/₁₆"x23⁵/₈"x1¹⁵/₁₆"
Pcs. Box 2 - ML x Box 1,20

- EG8U / EG8Y GRIGIO NAT. RETT.** ● 129

33x120x5 - 12¹⁵/₁₆"x47¹/₄"x1¹⁵/₁₆"
Pcs. Box 1 - Ml. x Box 1,20

- EG8W / EG90 GRIGIO NAT. RETT.** ● 146

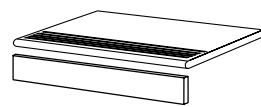


ANGOLO TERMINALE DX / SX ENDINGPIECE CORNER DX / SX
33x60x2,5 - 12¹⁵/₁₆"x23⁵/₈"x1¹⁵/₁₆"
Pcs. Box 2 - ML x Box 1,20

- EG96 / EG9A GRIGIO NAT. RETT.** ● 129

33x120x2,5 - 12¹⁵/₁₆"x47¹/₄"x1¹⁵/₁₆"
Pcs. Box 1 - Ml. x Box 1,20

- EG98 / EG9D GRIGIO NAT. RETT.** ● 146



GRADINO - STAIR TREAD
33x60 - 11¹³/₁₆"x23⁵/₈"
Pcs. Box 2 - ML x Box 1,20

- EG8G GRIGIO NAT. RETT.** ● 86

ALZATA - RISER
16,5x60 - 6¹/₂"x23⁵/₈"
Pcs. Box 2 - ML x Box 1,20

- EG8L GRIGIO NAT. RETT.** ● 35

GRADINO - STAIR TREAD
33x120 - 12¹⁵/₁₆"x47¹/₄"
Pcs. Box 1 - Ml. x Box 1,20

- EG8J GRIGIO NAT. RETT.** ● 137

ALZATA - RISER
16,5x120 - 6¹/₂"x47¹/₄"
Pcs. Box 1 - Ml. x Box 1,20

- EG8N GRIGIO NAT. RETT.** ● 58

PEZZI SPECIALI

TRIMS
PIECES SPECIALES
FORMTEILE
PIEZAS ESPECIALES
СПЕЦИАЛЬНЫЕ ИЗДЕЛИЯ

PEZZI SPECIALI

TRIMS
PIECES SPECIALES
FORMTEILE
PIEZAS ESPECIALES
СПЕЦИАЛЬНЫЕ ИЗДЕЛИЯ

Dry - Pressed Ceramic Tiles ISO 13006 Annex G - UNI EN 14411 Annex G - Bla UGL

CARATTERISTICHE TECNICHE Technical Features - Caracteristiques Techniques - Technische Eigenschaften Technische Eigenschaften - Caracteristicas Tecnicas - Технические Характеристики		NORMA Standard - Norme Norm - Norma - Norma	VALORI Value - Valeur Vorgabe - Valor - Средние		
	PLANARITÀ Flatness Planéité Ebenflächigkeit Planaridad Плоскость	UNI EN ISO 10545/2	± 0,26% / ± 1,5 mm		
		ASTM C485 CALIBRATED ± 0,75% (MAX ± 0,09 in)	-		
		ASTM C485 RECTIFIED ± 0,40% (MAX ± 0,05 IN-SIZE ≤ 60 cm) (MAX ± 0,07 IN-SIZE > 60 cm)	± 0,25%		
	ASSORBIMENTO D'ACQUA (VALORE MEDIO IN %) Water absorption (Average value expressed in %) - Absorption d'eau (Valeur moyenne en %) Wasseraufnahme (Durchschnittswert in %) - Absorción de agua (Valor medio en %) Поглощение воды	UNI EN ISO 10545/3 ≤ 0,5 %	CONFORME		
		ASTM C373	COMPLIANT		
	RESISTENZA ALLA FLESSIONE Modulus of rupture - Resistance a la flexion - Biegefestigkeit Resistencia a la flexion - Прочность на изгиб	SPESSORE	10 mm	20MM	
		UNI EN ISO 10545/4	≥ 50 N/mm ²	≥ 50 N/mm ²	
	FORZA DI ROTTURA Breaking strength - Résistance à la rupture - Bruchlast - Resistencia a la rotura - Разрывное усилие	UNI EN ISO 10545/4	≥ 2000 N	≥ 4000 N	
		ASTM C648	250 Lbs	700 Lbs	
	RESISTENZA AL GELO Frost resistance - Résistance au gel - Frostbeständigkeit Resistencia a las heladas - Морозостойкость	UNI EN ISO 10545/12	CONFORME		
		ASTM C1026	UNAFFECTED		
	RESISTENZA CHIMICA AD ALTE E BASSE CONCENTRAZIONI DI ACIDI E BASI Chemical resistance to high and low acid and basic concentrations Résistance chimique aux hautes et basses concentrations d'acides et de bases Chemikalienfestigkeit bei hohen und niedrigen Konzentrationen von Säuren und Basen Resistencia química con concentraciones altas y bajas de ácidos y bases Химическая стойкость к высоким и низким концентрациям кислот и щелочей	UNI EN ISO 10545/13	UA - ULA - UHA		
		ASTM C-650	UNAFFECTED		
	RESISTENZA ALLE MACCHIE Stain resistance - Résistance aux taches - Fleckenbeständigkeit Resistencia a las manchas - Стойкость к образованию пятен	UNI EN ISO 10545/14	5		
		CTI 81-7D	NO EVIDENT VARIATION		
	COEFFICIENTE DI ATTRITO Slip resistance Coefficient de glissement Rutschfestigkeit Barfußbereich Coeficiente de atrito medio Коэффициент трения	DIN 51130	NAT. R10	LAPP. -	20MM R11
		DIN 51097	B (A+B)	-	C (A+B+C)
		ANSI A 137.1- 2012 DCOF (Section 9.6)	WET ≥ 0,42	-	WET ≥ 0,42
		B.C.R.A.	≥ 0,40	-	≥ 0,40
		AS 4586: 2013 Slip resistance classification of new pedestrian surface materials	P2	-	P3
		BS 7976-2: 2002 Pendulum testers	25-35 Moderate Slip Potential	-	> 36 Low Slip Potential
		ENV 12633-2006 Method of determination of unpolished and polished slip/skid resistance value	1	-	3

For further information on technical specifications, please consult our up-dated general catalogue.



Formato Size	Spessore Thickness	Pz. x Mq. Pieces x Sqm	Pz. x Scat. Pieces x Box	Mq. x Scat. Sqm x Box	Peso x Scat. Weight x Box	Scat. x Pal. Boxes x Pal.	Mq. x Pal. Sqm x Pal.	Peso x Pal. Weight x Pal.
Format	Epaisseur	Pcs / M ²	Pcs / Bte	M ² / Bte	Poids / Bte	Bte / Pal.	M ² / Pal.	Poids / Pal.
Format	Stärke	Stk. x Qm	Stk. x Krt.	Qm x Krt.	Gewicht x Krt.	Krt. x Pal.	Qm x Pal.	Gewicht x Pal.
Tamaño	Espesor	Pzs x Mc.	Pzs x Caja	Mc. x Caja	Peso x Caja	Cajas x Pal.	Mc. x Pal.	Peso x Pal.
Формат	Толщина	Шт x Кв.М.	Шт x Кор.	Кв.М. x Кор.	Вес x Кор.	Кор. x Подд.	Кв.М x Подд.	Вес x Подд.
cm	mm				Kg			Kg
60x120 Naturale	10	1,39	2	1,440	33,17	36	51,84	1194
60x60 Nat./Lapp.	10	2,78	3	1,080	24,29	40	43,20	972
30x60 Nat./Lapp.	10	5,56	6	1,080	24,45	40	43,20	978
90x90 Nat./Lapp.	10	1,23	2	1,620	36,82	24	38,88	884
45x90 Nat./Lapp.	10	2,47	3	1,215	27,85	32	38,88	891
40x120 Naturale	20	2,08	1	0,480	22,46	48	23,04	1078
60x60 Naturale	20	2,78	2	0,720	34,22	32	23,04	1095
30x30 Mosaico Nat./Lapp.	10	11,11	5	0,450	10,90	60	27,00	654
30x60 List. sfalsati Nat./Lapp.	10	5,56	4	0,720	18,25	30	21,60	548



WEBSITE LINKS

www.architecturalceramics.com/catalogs

PLEASE NOTE THIS LINK IS CASE SENSITIVE

CONTACT INFORMATION:

www.architecturalceramics.com

1.800.287.1742

For general sales inquiries: sales@architecturalceramics.com

For commercial & hospitality sample requests: samples@architecturalceramics.com

Headquarters: 800 E Gude Dr Suite F Rockville, MD 20850