

TERRANO

Double Loaded Porcelain

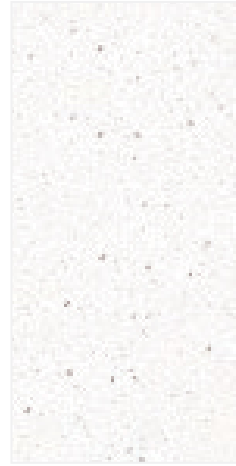
ARCHITECTURAL
CERAMICS



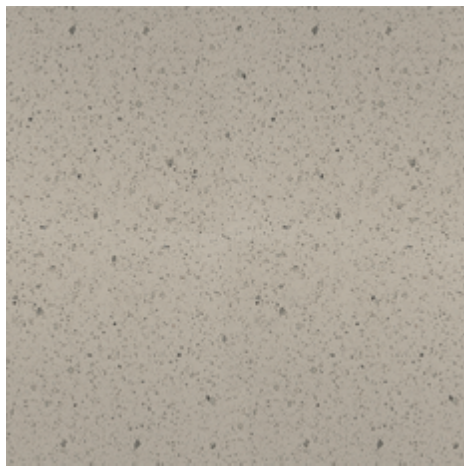
COLORS



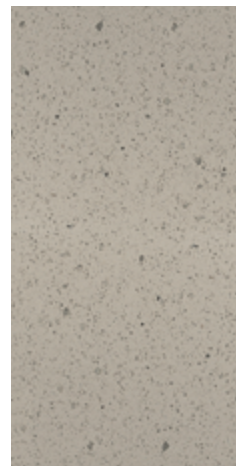
24x24 Crystal White*



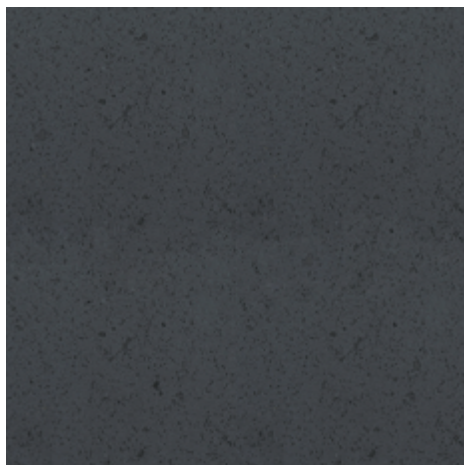
12x24 Crystal White*



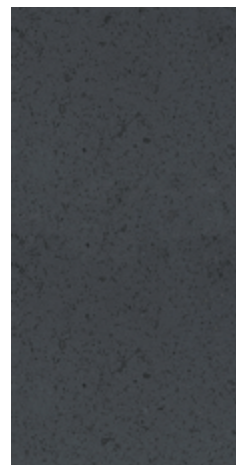
24x24 Moonstone*



12x24 Moonstone*



24x24 Gunmetal*



12x24 Gunmetal*

AVAILABLE SIZES	FIELD	
	24x24	12x24
Crystal White	H*	H*
Moonstone	H*	H*
Gunmetal	H*	H*

H=Honed finish, *Stocked Sizes

Lead times for specialty & non-stocked items varies depending on product ordered, quantity, and destination. Please contact ACI to determine the lead time to order samples and material.

DESCRIPTION

Terrano is a porcelain tile with a contemporary spin on the age old terrazzo look found in historic banks and retailers.

INSTALLATION & MAINTENANCE

Terrano may be installed using standard ceramic installation methods and materials, as recommended by the Tile Council of North America (TCNA). An Architectural Ceramics sales representative will advise you on general installation questions.

TECHNICAL INFORMATION

ORIGIN: CHINA
 AVAILABLE FINISHES: HONED
 TYPE: DOUBLE LOADED PORCELAIN
 EDGE: RECTIFIED
 LOOK: TERRAZZO
 APPLICATION: WALL & FLOOR
 USE: COMMERCIAL & RESIDENTIAL
 PACKAGING: PLEASE CONSULT YOUR ACI SALES REP FOR PACKAGING INFORMATION

COLOR VARIATION: V2-SLIGHT VARIATION
 THICKNESS: 10 MM
 PORCELAIN ENAMEL INSTITUTE SCALE: N/A
 DYNAMIC COEFFICIENT OF FRICTION: >.42
 BREAKING STRENGTH: COMPLIANT TO ASTM C-648 > 250 LBS
 WATER ABSORPTION: < 0.5%
 STAIN RESISTANCE: YES
 FROST RESISTANCE: YES
 ENVIRONMENT:
 PRE-CONSUMER RECYCLED CONTENT OF APPROXIMATELY 20%;
 25% RECYCLED MATERIAL OR WASTE MASS INTEGRATED IN PRODUCTION PROCESSES.

WEBSITE LINKS

www.architecturalceramics.com/catalogs
 PLEASE NOTE THIS LINK IS CASE SENSITIVE

CONTACT INFORMATION:

www.architecturalceramics.com

1.800.287.1742

For general sales inquiries: sales@architecturalceramics.com

For commercial & hospitality sample requests: samples@architecturalceramics.com

Headquarters: 800 E Gude Dr Suite F Rockville, MD 20850