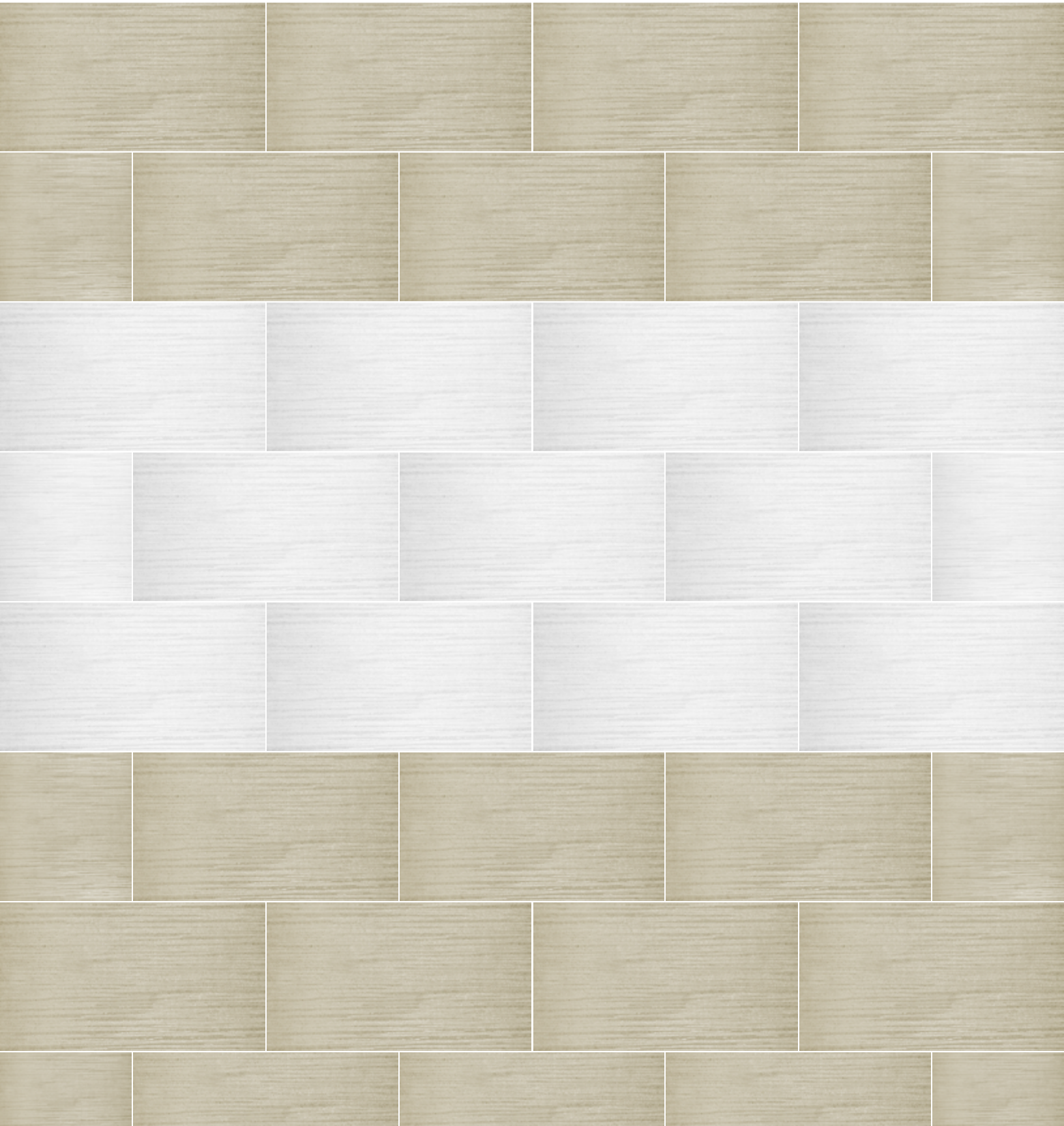


CONTINUUM

Glazed Porcelain

ARCHITECTURAL
CERAMICS



COLORS



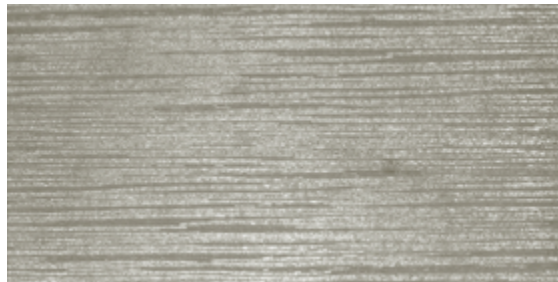
12x24 White



12x24 Ivory



12x24 Taupe



12x24 Grey



12x24 Black

AVAILABLE SIZES

| | FIELD | |
|-------|-------|-------|
| | 12x24 | 24x24 |
| White | SP | SP |
| Ivory | SP | SP |
| Taupe | SP | SP |
| Grey | SP | SP |
| Black | SP | SP |

SP=Semi-Polished

Lead times for specialty & non-stocked items will vary depending on product ordered, quantity, and destination. Please contact ACI to determine the lead time to order samples and material.

DESCRIPTION

Continuum has a semi-polished raised linear look on a plain colored glazed porcelain tile.

INSTALLATION & MAINTENANCE

Continuum may be installed using standard ceramic tile installation methods and materials, as recommended by the Tile Council of North America (TCNA). An Architectural Ceramics sales representative will advise you on general installation questions.

TECHNICAL INFORMATION

ORIGIN: CHINA

AVAILABLE FINISHES: SEMI-POLISHED

TYPE: GLAZED PORCELAIN

EDGE: RECTIFIED

LOOK: FABRIC

APPLICATION: FLOOR & WALL

USE: RESIDENTIAL-LIGHT AND DARK COLORS ARE RATED FOR RESIDENTIAL FLOORS AND WALLS. COMMERCIAL-LIGHT COLORS ARE RATED FOR LIGHT COMMERCIAL APPLICATIONS.

PACKAGING: PACKAGING: PLEASE CONSULT YOUR ACI SALES REP FOR PACKAGING INFORMATION

COLOR VARIATION: V1 - UNIFORM APPEARANCE

THICKNESS: 3/8"

PORCELAIN ENAMEL INSTITUTE SCALE: N/A

COEFFICIENT OF FRICTION: DOES NOT CONFORM

BREAKING STRENGTH: COMPLIANT TO ASTM C-648 > 250 LBS

WATER ABSORPTION: 0.15%

STAIN RESISTANCE: YES

FROST RESISTANCE: YES

ENVIRONMENT: N/A

WEBSITE LINKS

www.architecturalceramics.com/catalogs

PLEASE NOTE THIS LINK IS CASE SENSITIVE

CONTACT INFORMATION:

www.architecturalceramics.com

1.800.287.1742

For general sales inquiries: sales@architecturalceramics.com

For commercial & hospitality sample requests: samples@architecturalceramics.com

Headquarters: 800 E Gude Dr Suite F, Rockville, MD 20850