

ADELE

Cement

 ARCHITESSA
an Architectural Ceramics brand





Adele Sout 8x8

COLORS



Blues



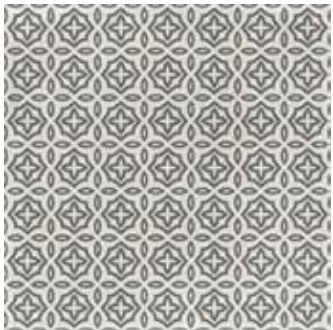
Pattern: 8 pieces



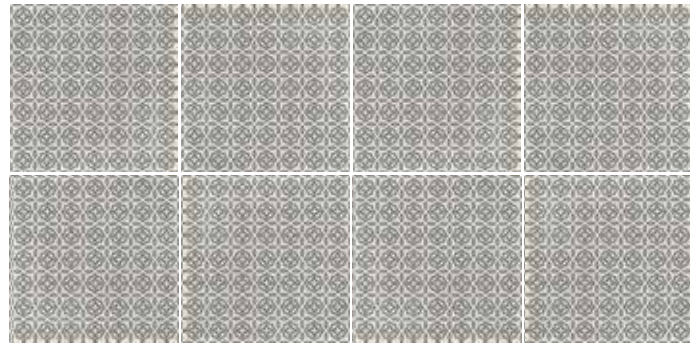
Jazz



Pattern: 8 pieces



Retro



Pattern: 8 pieces



Soul



Pattern: 8 pieces

AVAILABLE SIZES

	FIELD
	8x8
Blues	M*
Jazz	M*
Retro	M*
Soul	M*

M= Matte * = Stocked Sizes

Lead times for specialty & non-stocked items varies depending on product ordered, quantity, and destination. Please contact Architessa to determine the lead time to order samples and material.

DESCRIPTION

ADELE is inspired by the traditional hydraulic floor, also known as cement tiles. The Adele Collection is the perfect accent to any space. Its pattern brings color and design that merges the classic and modern looks, while enhancing any project with its decorative accents.

INSTALLATION & MAINTENANCE

ADELE may be installed using standard cement installation methods and materials, as recommended by the Tile Council of North America (TCNA). An Architessa sales representative will advise you on general installation questions.

TECHNICAL INFORMATION

ORIGIN: SPAIN
 AVAILABLE FINISHES: MATTE
 TYPE: GLAZED PORCELAIN
 EDGE: NOT RECTIFIED
 LOOK: PATTERN
 APPLICATION: WALL & FLOOR
 USE: COMMERCIAL & RESIDENTIAL
 PACKAGING: PLEASE CONSULT YOUR SALES REP

COLOR VARIATION: V3
 THICKNESS: 8 MM
 PORCELAIN ENAMEL INSTITUTE SCALE: CLASS 5
 DYNAMIC COEFFICIENT OF FRICTION: <0.5%
 BREAKING STRENGTH: ASTM C-648 >250LBS
 WATER ABSORPTION: >.5%
 STAIN RESISTANCE: YES
 FROST RESISTANCE: YES
 ENVIRONMENT: N/A

WEBSITE

www.architessa.com/products

CONTACT INFORMATION:

www.architessa.com

1.800.287.1742

For general sales inquiries: sales@architessa.com

For commercial & hospitality sample requests: samples@architessa.com

Headquarters: 1803 Research Blvd. Suite 402 Rockville, MD 20850