

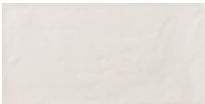
BRICKWORKS

Porcelain

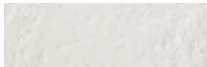
ARCHITECTURAL CERAMICS



GESSO



5x10



2.5x10

CALCE



12x24



12x12



5x10



2.5x10

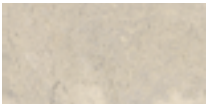
AVANA



12x24



12x12

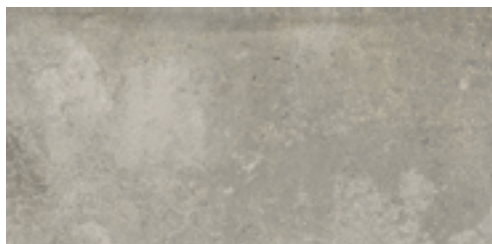


5x10



2.5x10

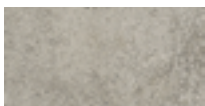
CENERE



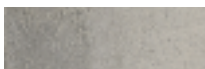
12x24



12x12

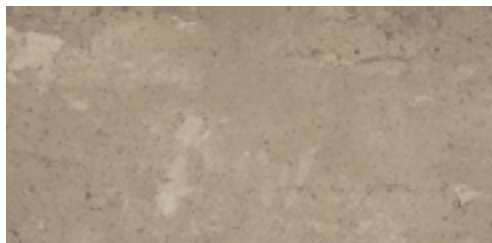


5x10



2.5x10

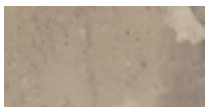
TERRA



12x24



12x12



5x10



2.5x10

MATTONE



12x24



12x12

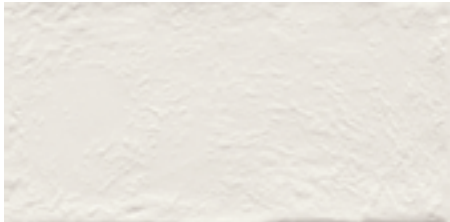
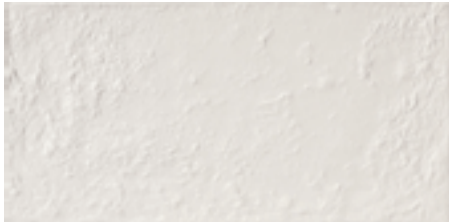
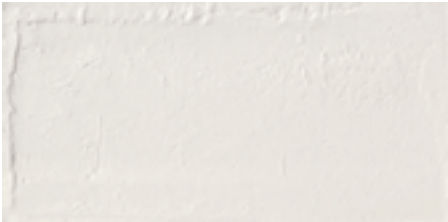
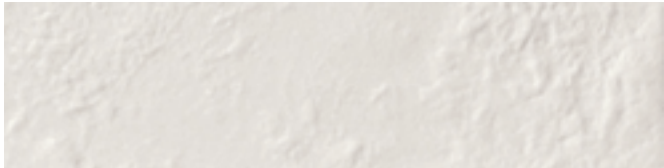
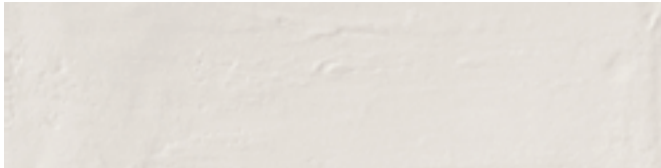
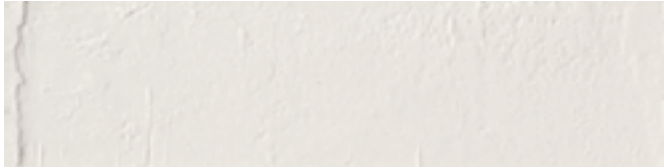


5x10



2.5x10

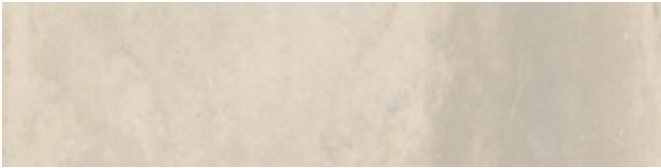
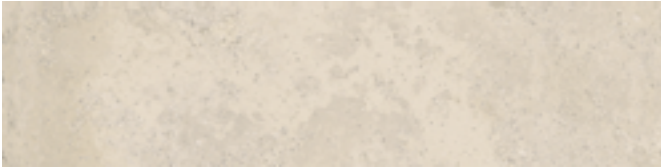
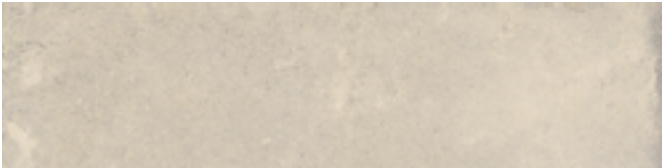
GESSO - EXPECTED PATTERN VARIATION



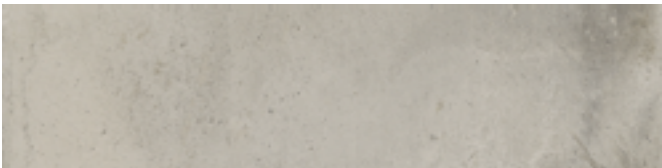
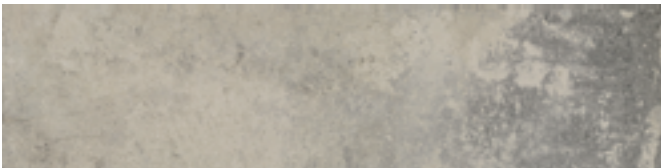
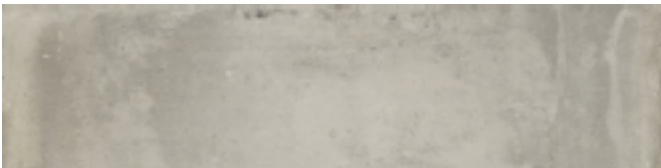
CALCE - EXPECTED PATTERN VARIATION



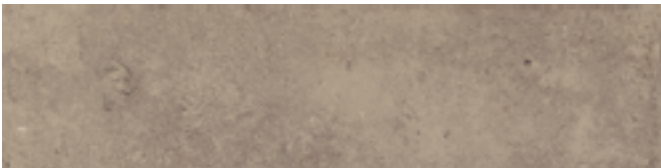
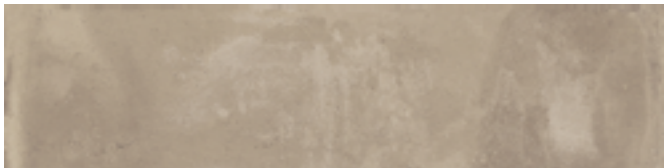
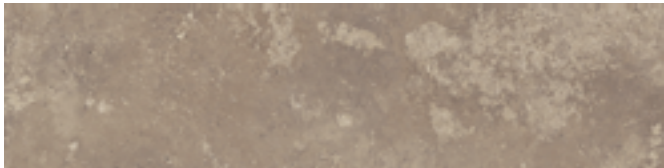
AVANA - EXPECTED PATTERN VARIATION



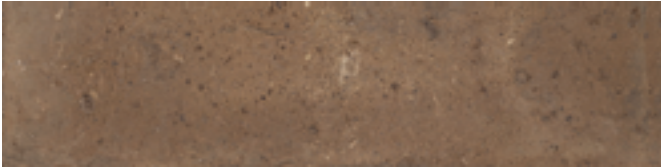
CENERE - EXPECTED PATTERN VARIATION



TERRA - EXPECTED PATTERN VARIATION



MATTONE - EXPECTED PATTERN VARIATION



GESSO

CENERE

CALCE

MATTONE

MATTONE

CALCE

AVANA

TERRA

TERRA

AVANA

CENERE

CENERE

MATTONE

CENERE



CESSO

MATTONE

TERRA

AVANA

AVANA

TERRA



CALCE

CALCE

GENERE

MATTONE



CALCE



MATTONE



CENERE



TERRA



AVANA



CESSO

MATTONE

AVANA

TERRA

TERRA

AVANA

CALCE

MATTONE

MATTONE

CALCE

CESSO

CENERE

GENERE

MATTONE

AVAILABLE SIZES	FIELD				XL FIELD TILE			MOSAICS	TRIM	
	12x24	12x12	5x10	2.5x10	32x32	16x32	24x24	2x2	3x24 BN	2.5x10 BN
Gesso			N	N						N
Calce	N	N	N	N	<i>N</i>	<i>N</i>	<i>N</i>	N	N	N
Avana	N	N	N	N	<i>N</i>	<i>N</i>	<i>N</i>	N	N	N
Cenere	N	N	N	N	<i>N</i>	<i>N</i>	<i>N</i>	N	N	N
Terra	N	N	N	N	<i>N</i>	<i>N</i>	<i>N</i>	N	N	N
Mattone	N	N	N	N	<i>N</i>	<i>N</i>	<i>N</i>	N	N	N

N=Natural finish

Italicized items are special order from Italy with extended lead times. Please consult an ACI sales rep for sample & product availability.

Lead times for specialty & non-stocked items will vary depending on product ordered, quantity, and destination. Please contact ACI to determine the lead time to order samples and material.

DESCRIPTION

Brickworks porcelain pays homage to the distinctive signs of hand-forging brick that creates variations and marks left by hand-crafting and firing of the clay.

INSTALLATION & MAINTENANCE

Brickworks may be installed using standard ceramic tile installation methods and materials, as recommended by the Tile Council of North America (TCNA). An Architectural Ceramics sales representative will advise you on general installation questions.

TECHNICAL INFORMATION

ORIGIN: ITALY

AVAILABLE FINISHES: NATURAL

TYPE: PORCELAIN

EDGE: RECTIFIED (32X32, 16X32, 24X24, 12X24 & 12X12)

NATURAL (5X10 & 2.5X10)

LOOK: BRICK, COTTO

APPLICATION: FLOOR & WALL

USE: HEAVY COMMERCIAL

PACKAGING: PLEASE CONSULT YOUR ACI SALES REP
FOR PACKAGING INFORMATION

COLOR VARIATION: V4 - SUBSTANTIAL VARIATION

V3 - MODERATE VARIATION (XL FIELD)

THICKNESS: 9 MM (XL FIELD IS 10 MM)

PORCELAIN ENAMEL INSTITUTE SCALE: N/A

DYNAMIC COEFFICIENT OF FRICTION: >.42

BREAKING STRENGTH: COMPLIANT TO ASTM C-648 > 250 LBS

WATER ABSORPTION: < 0.5%

STAIN RESISTANCE: YES

FROST RESISTANCE: YES

ENVIRONMENT: 7.5% RECYCLED CONTENT

WEBSITE LINKS

www.architecturalceramics.com/catalogs

PLEASE NOTE THIS LINK IS CASE SENSITIVE

CONTACT INFORMATION:

www.architecturalceramics.com

1.800.287.1742

For general sales inquiries: sales@architecturalceramics.com

For commercial & hospitality sample requests: samples@architecturalceramics.com

Headquarters: 800 E Gude Dr Suite F Rockville, MD 20850