

SILK STONE

Porcelain

ARCHITECTURAL
CERAMICS

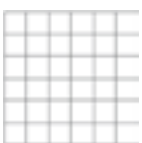
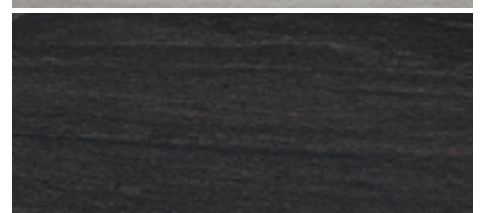
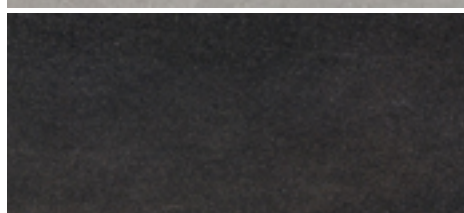
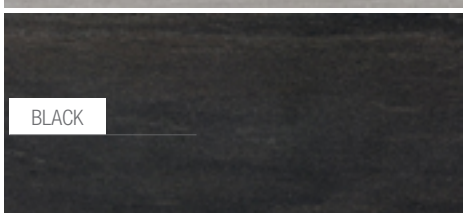
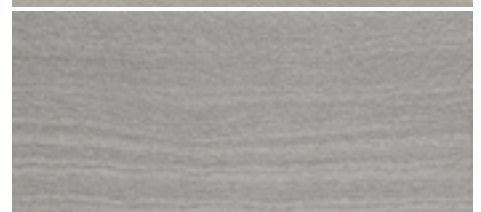
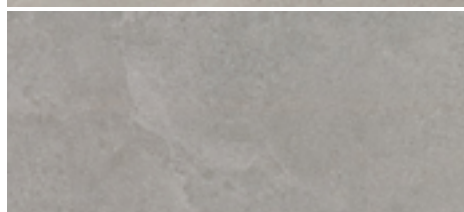
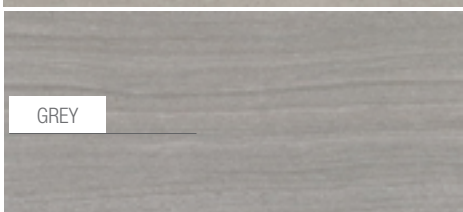
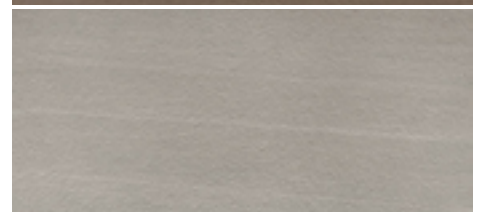
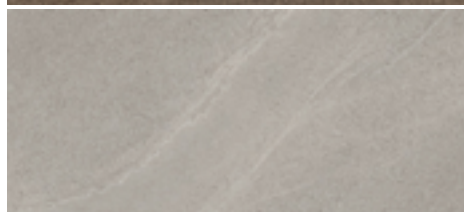
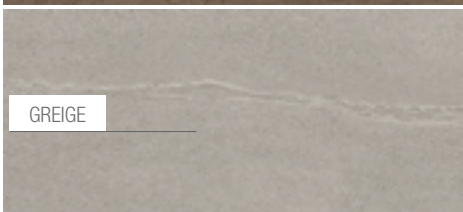
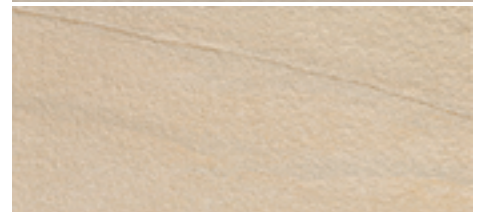
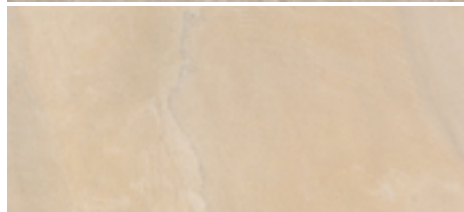
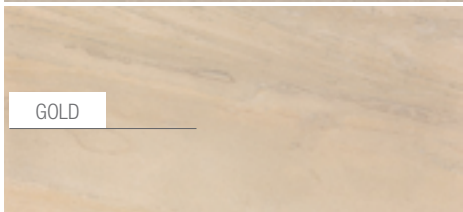
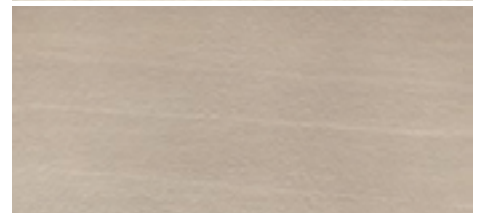
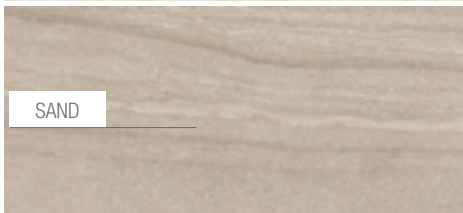
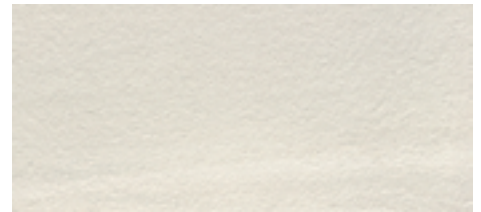
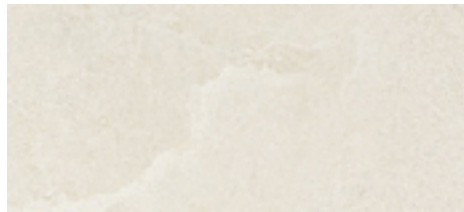
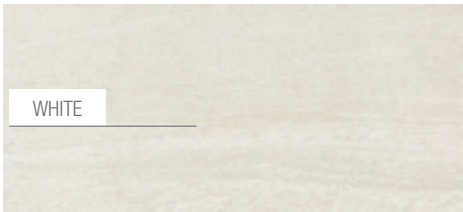


COLORS

FALDA

CONTROFALDA

STRUTTURATO



2x2 Mosaic



6x48 Squadro



12x24 Listelli (2 of each pattern per box)































AVAILABLE SIZES

	FIELD				PLANK	MOSAICS			TRIM		
	24x48	18x36	24x24	12x24	8x48	2x2	6x48 Listelli Squadro	12x24 Mesh Listelli Sfalsati	3.5x24 Bullnose	6x12 Cove	1x6 Cove (Specify in or out)
White Falda (Vein-cut)	<i>L, N</i>	<i>L, N</i>	<i>L, N</i>	<i>L, N</i>	<i>L, N</i>	N	<i>L</i>			<i>N</i>	<i>N</i>
White Controfalda (Cross-cut)	<i>L, N</i>	<i>L, N</i>	<i>L, N</i>	<i>L, N</i>	<i>L, N</i>				N/L	<i>L, N</i>	
White Strutturato	<i>N</i>			<i>N</i>							
Sand Falda (Vein-cut)	<i>L, N</i>	<i>L, N</i>	<i>L, N</i>	<i>L, N</i>	<i>L, N</i>	N	<i>L</i>			<i>N</i>	<i>N</i>
Sand Controfalda (Cross-cut)	<i>L, N</i>	<i>L, N</i>	<i>L, N</i>	<i>L, N</i>	<i>L, N</i>				N/L	<i>L, N</i>	
Sand Strutturato	<i>N</i>			<i>N</i>							
Gold Falda (Vein-cut)	<i>L, N</i>	<i>L, N</i>	<i>L, N</i>	<i>L, N</i>	<i>L, N</i>	N	<i>L</i>			<i>N</i>	<i>N</i>
Gold Controfalda (Cross-cut)	<i>L, N</i>	<i>L, N</i>	<i>L, N</i>	<i>L, N</i>	<i>L, N</i>				N/L	<i>L, N</i>	
Gold Strutturato	<i>N</i>			<i>N</i>							
Brown Falda (Vein-cut)	<i>L, N</i>	<i>L, N</i>	<i>L, N</i>	<i>L, N</i>	<i>L, N</i>	N	<i>L</i>			<i>N</i>	<i>N</i>
Brown Controfalda (Cross-cut)	<i>L, N</i>	<i>L, N</i>	<i>L, N</i>	<i>L, N</i>	<i>L, N</i>				N/L	<i>L, N</i>	
Brown Strutturato	<i>N</i>			<i>N</i>							
Greige Falda (Vein-cut)	<i>L, N</i>	<i>L, N</i>	<i>L, N</i>	<i>L, N</i>	<i>L, N</i>	N	<i>L</i>			<i>N</i>	<i>N</i>
Greige Controfalda (Cross-cut)	<i>L, N</i>	<i>L, N</i>	<i>L, N</i>	<i>L, N</i>	<i>L, N</i>				N/L	<i>L, N</i>	
Greige Strutturato	<i>N</i>			<i>N</i>							
Grey Falda (Vein-cut)	<i>L, N</i>	<i>L, N</i>	<i>L, N</i>	<i>L, N</i>	<i>L, N</i>	N	<i>L</i>			<i>N</i>	<i>N</i>
Grey Controfalda (Cross-cut)	<i>L, N</i>	<i>L, N</i>	<i>L, N</i>	<i>L, N</i>	<i>L, N</i>				N/L	<i>L, N</i>	
Grey Strutturato	<i>N</i>			<i>N</i>							
Black Falda (Vein-cut)	<i>L, N</i>	<i>L, N</i>	<i>L, N</i>	<i>L, N</i>	<i>L, N</i>	N	<i>L</i>			<i>N</i>	<i>N</i>
Black Controfalda (Cross-cut)	<i>L, N</i>	<i>L, N</i>	<i>L, N</i>	<i>L, N</i>	<i>L, N</i>				N/L	<i>L, N</i>	
Black Strutturato	<i>N</i>			<i>N</i>							

L=Lappato, N=Natural finish

Italicized items are special order from Italy with extended lead times. Please consult an ACI sales rep for sample & product availability.

Additional Trim may be available. Please contact your sales representative.

Lead times for specialty & non-stocked items varies depending on product ordered, quantity, and destination. Please contact ACI to determine the lead time to order samples and material.

DESCRIPTION

A product born from stone. The result is a new stone with improved technical properties but the same endless variation created by Nature over millions of years. Silk Stone: technology and creativity for architecture without constraints.

INSTALLATION & MAINTENANCE

Silk Stone may be installed using standard ceramic tile installation methods and materials, as recommended by the Tile Council of North America (TCNA). An Architectural Ceramics sales representative will advise you on general installation questions.

TECHNICAL INFORMATION

ORIGIN: ITALY

AVAILABLE FINISHES: LAPPATO, NATURAL, STRUTTURATO

TYPE: PORCELAIN

EDGE: RECTIFIED

LOOK: MIXED STONE

APPLICATION: WALL & FLOOR

USE: RESIDENTIAL & COMMERCIAL

PACKAGING: PLEASE CONSULT YOUR ACI SALES REP FOR PACKAGING INFORMATION

COLOR VARIATION: V3-MODERATE VARIATION

THICKNESS: 10.5 MM

PORCELAIN ENAMEL INSTITUTE SCALE: N/A

DYNAMIC COEFFICIENT OF FRICTION: >.42

BREAKING STRENGTH: COMPLIANT TO ASTM C-648 > 250 LBS

WATER ABSORPTION: < 0.5%

STAIN RESISTANCE: YES

FROST RESISTANCE: YES

ENVIRONMENT: 7.5% PRE-CONSUMER RECYCLED CONTENT

WEBSITE LINKS

www.architecturalceramics.com/catalogs

PLEASE NOTE THIS LINK IS CASE SENSITIVE

CONTACT INFORMATION:

www.architecturalceramics.com

1.800.287.1742

For general sales inquiries: sales@architecturalceramics.com

For commercial & hospitality sample requests: samples@architecturalceramics.com

Headquarters: 800 E Gude Dr Suite F Rockville, MD 20850