

CONTOURZ

Concrete



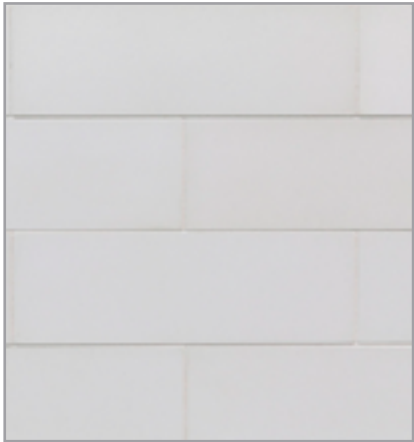
ARCHITESSA

an Architectural Ceramics brand



LUNADA
BAY TILE

CONTOURZ PATTERNS



3 x 9



6 x 9



4" Hex



Zen Break A
(3 x 9)



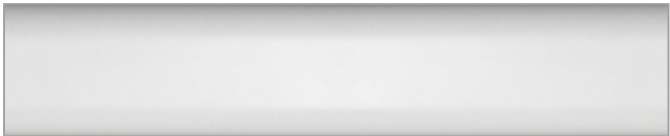
Zen Break B
(3 x 9)



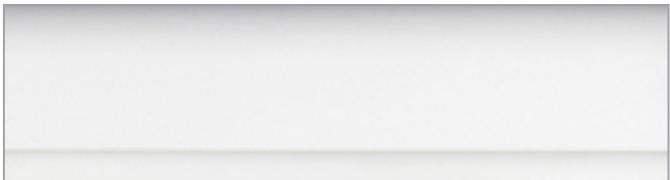
Fanfare Hex
(4")



Trifecta
(9 x 10 1/4)



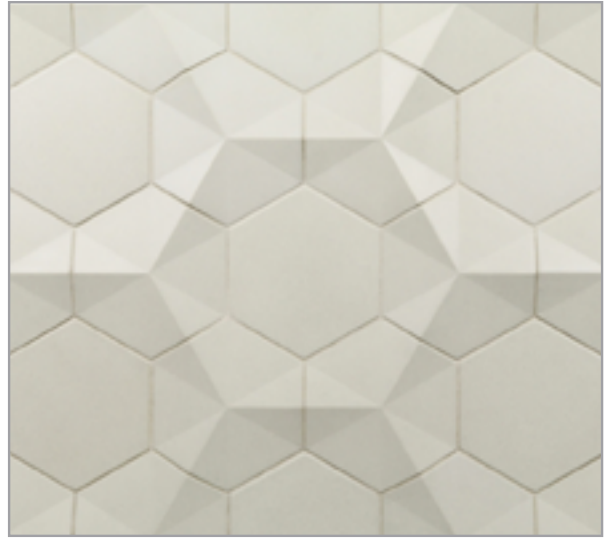
Retro Curve
(1 1/2 x 9)



In & Out
(2 1/2 x 9)



Sea Salt



Soho



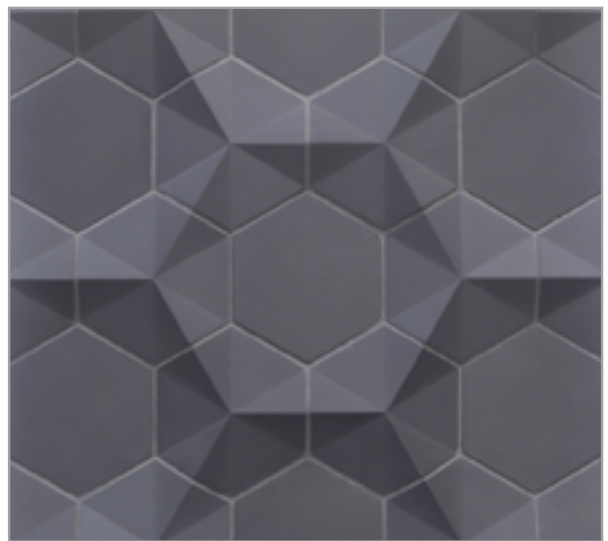
Grayce



Grey Matter



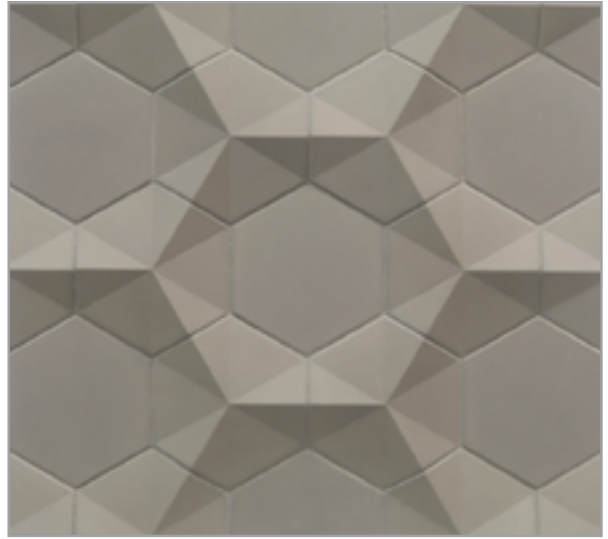
Steel



Nori



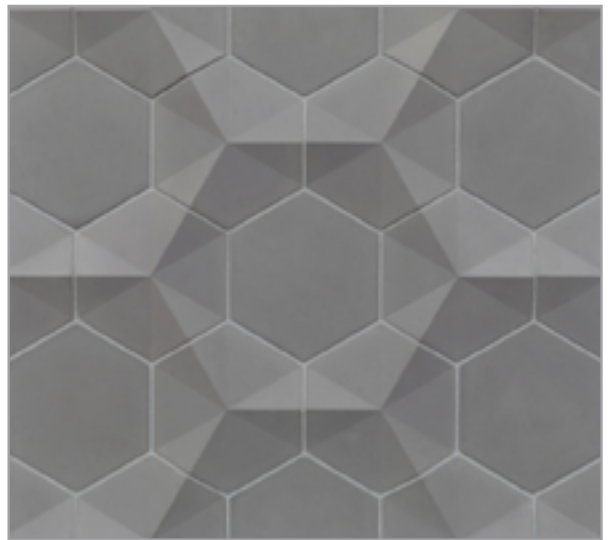
Camo



Portobello



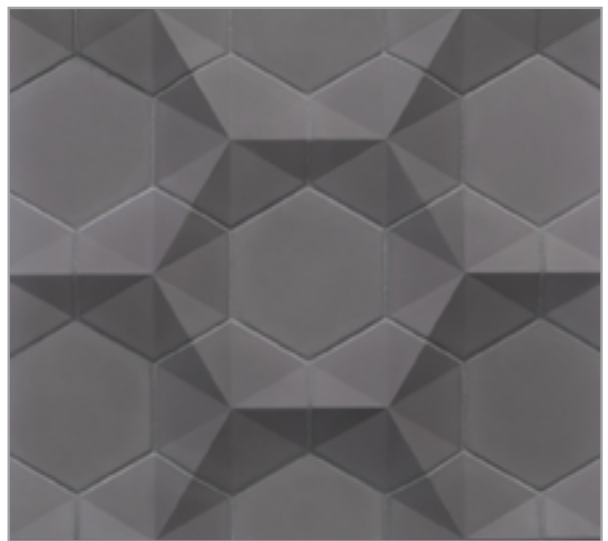
Stone Mountain



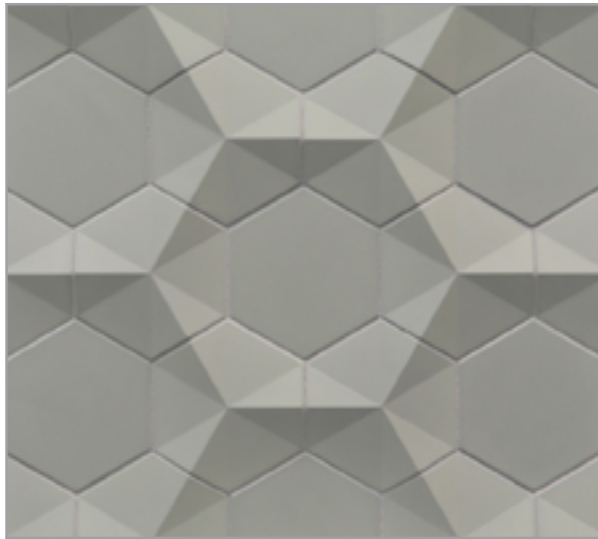
De-Construct



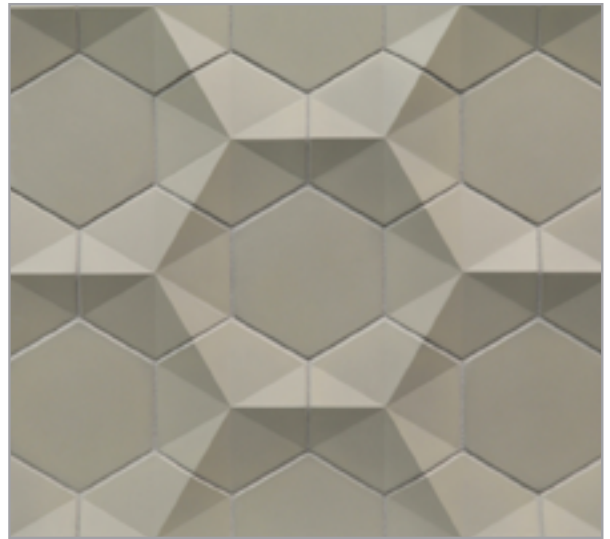
Macchiato



Irony



Herb



Ginger Route



Stoneware



Green Tea



Ginkgo



Urban Mist



Contourz [kon-toors]

Lunada Bay Tile elevates concrete tile design through engineering and artistry to deliver tactile surfaces with modern shapes and colors. The three-dimensional tiles transform walls into sculpture, and the flat field tiles create an atmosphere that ranges from quiet elegance to industrial. Specially engineered to the highest durability for residential and commercial installations, Contourz concrete tiles have a similar thickness to many of Lunada Bay Tile's ceramic and glass tile series giving the design opportunity to combine them with our other tile collections.



PROUD PARTNER OF:



CONTACT INFORMATION:

www.architessa.com

1.800.287.1742

For general sales inquiries: sales@architessa.com

For commercial & hospitality sample requests: samples@architessa.com

Headquarters: 1803 Research Blvd. Suite 402 Rockville, MD 20850