

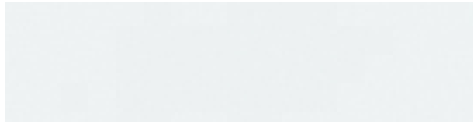
SUBLIME

Glass

ARCHITECTURAL
CERAMICS



COLORS



SUPER WHITE



WARM GREY



BOTTLE GREEN



SPECIAL GREY



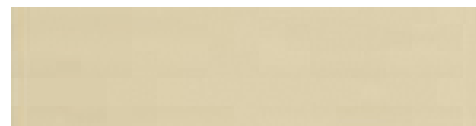
AQUA



DOVE GREY



SAGE



BEIGE



CHARCOAL GREY



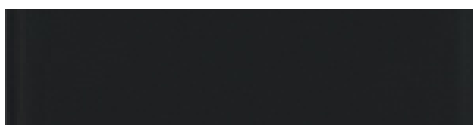
IVORY



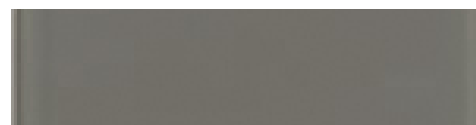
TEAL BLUE



TAUPE



BLACK



GREY

FIELD TILES - GLOSSY FINISH



3x6 SUPER WHITE



2x12 SUPER WHITE



4x16 SUPER WHITE



3x6 BOTTLE GREEN



2x12 BOTTLE GREEN



4x16 BOTTLE GREEN



3x6 AQUA



2x12 AQUA



4x16 AQUA



3x6 SAGE



2x12 SAGE



4x16 SAGE



3x6 CHARCOAL GREY



2x12 CHARCOAL GREY



4x16 CHARCOAL GREY



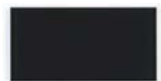
3x6 TEAL BLUE



2x12 TEAL BLUE



4x16 TEAL BLUE



3x6 BLACK



2x12 BLACK



4x16 BLACK

FIELD TILES - GLOSSY FINISH



3x6 WARM GREY



2x12 WARM GREY



4x16 WARM GREY



3x6 SPECIAL GREY



2x12 SPECIAL GREY



4x16 SPECIAL GREY



3x6 DOVE GREY



2x12 DOVE GREY



4x16 DOVE GREY



3x6 BEIGE



2x12 BEIGE



4x16 BEIGE



3x6 IVORY



2x12 IVORY



4x16 IVORY



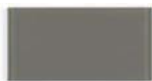
3x6 TAUPE



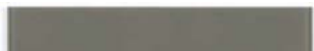
2x12 TAUPE



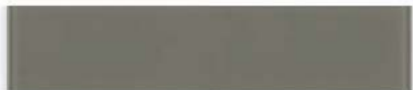
4x16 TAUPE



3x6 GREY



2x12 GREY



4x16 GREY

FIELD TILES - MATTE FINISH



2x12 SUPER WHITE



2x12 BOTTLE GREEN



2x12 AQUA



2x12 SAGE



2x12 CHARCOAL GREY



2x12 TEAL BLUE



2x12 BLACK



2x12 WARM GREY



2x12 SPECIAL GREY



2x12 DOVE GREY



2x12 GREY



2x12 IVORY

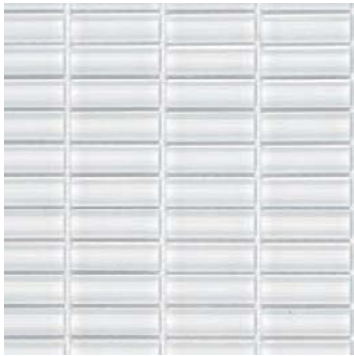


2x12 TAUPE



2x12 GREY

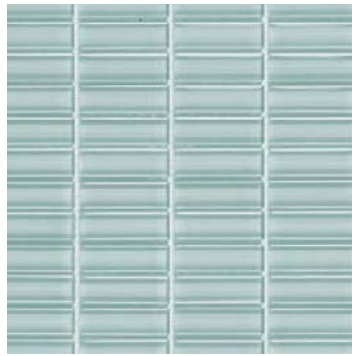
STACKED MOSAICS - GLOSSY FINISH



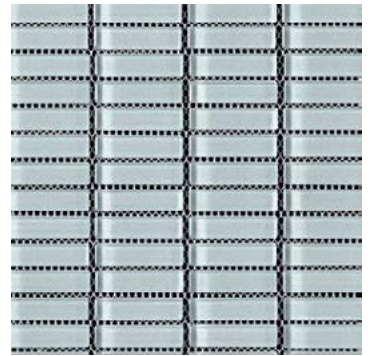
0.6x1.9 STACKED MOSAIC
SUPER WHITE



0.6x1.9 STACKED MOSAIC
BOTTLE GREEN



0.6x1.9 STACKED MOSAIC
AQUA



0.6x1.9 STACKED MOSAIC
SAGE



0.6x1.9 STACKED MOSAIC
CHARCOAL GREY



0.6x1.9 STACKED MOSAIC
TEAL BLUE



0.6x1.9 STACKED MOSAIC
BLACK



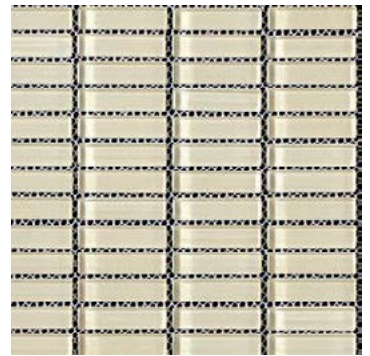
0.6x1.9 STACKED MOSAIC
WARM GREY



0.6x1.9 STACKED MOSAIC
SPECIAL GREY



0.6x1.9 STACKED MOSAIC
DOVE GREY



0.6x1.9 STACKED MOSAIC
BEIGE



0.6x1.9 STACKED MOSAIC
IVORY

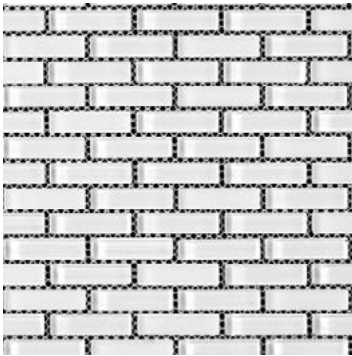


0.6x1.9 STACKED MOSAIC
TAUPE



0.6x1.9 STACKED MOSAIC
GREY

BRICKED MOSAIC - MATTE/GLOSSY FINISH



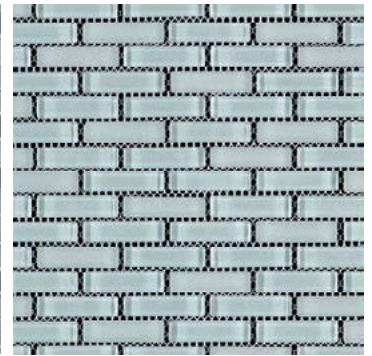
0.6x1.9 BRICKED MOSAIC
SUPER WHITE



0.6x1.9 BRICKED MOSAIC
BOTTLE GREEN



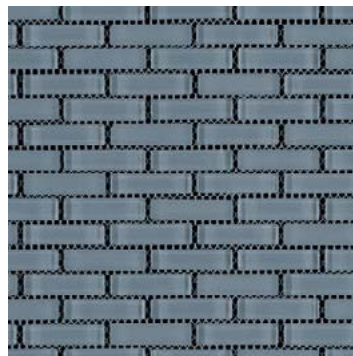
0.6x1.9 BRICKED MOSAIC
AQUA



0.6x1.9 BRICKED MOSAIC
SAGE



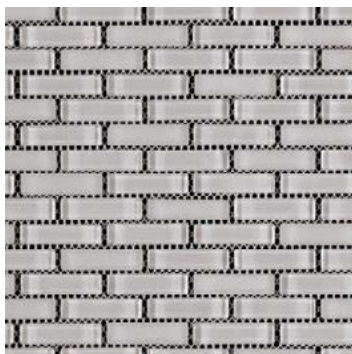
0.6x1.9 BRICKED MOSAIC
CHARCOAL GREY



0.6x1.9 BRICKED MOSAIC
TEAL BLUE



0.6x1.9 BRICKED MOSAIC
BLACK



0.6x1.9 BRICKED MOSAIC
WARM GREY



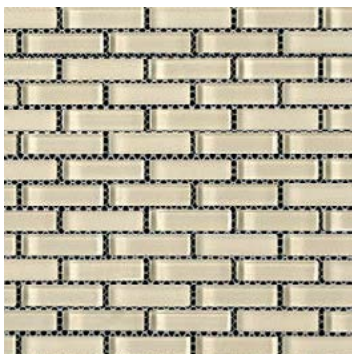
0.6x1.9 BRICKED MOSAIC
SPECIAL GREY



0.6x1.9 BRICKED MOSAIC
DOVE GREY



0.6x1.9 BRICKED MOSAIC
BEIGE



0.6x1.9 BRICKED MOSAIC
IVORY



0.6x1.9 BRICKED MOSAIC
TAUPE



0.6x1.9 BRICKED MOSAIC
GREY



AVAILABLE SIZES	WALL			MOSAIC	
	4x16	2x12	3x6	0.6x1.9 Stacked	0.6x1.9 Bricked
Super White	G	G, M	G	G	G/M
Bottle Green	G	G, M	G	G	G/M
Aqua	G	G, M	G	G	G/M
Sage	G	G, M	G	G	G/M
Charcoal Grey	G	G, M	G	G	G/M
Teal Blue	G	G, M	G	G	G/M
Black	G	G, M	G	G	G/M
Warm Grey	G	G, M	G	G	G/M
Special Grey	G	G, M	G	G	G/M
Dove Grey	G	G, M	G	G	G/M
Beige	G	G, M	G	G	G/M
Ivory	G	G, M	G	G	G/M
Taupe	G	G, M	G	G	G/M
Grey	G	G, M	G	G	G/M

G=Glossy finish, M=Matte finish, G/M=Glossy & Matte finish

Lead times for specialty & non-stocked items varies depending on product ordered, quantity, and destination. Please contact ACI to determine the lead time to order samples and material.

DESCRIPTION

A comprehensive collection of glass tiles and mosaics in both matte and glossy finishes. Available in an assortment of colours that will be sure to complement any decor.

INSTALLATION & MAINTENANCE

Sublime may be installed using standard glass tile installation methods and materials, as recommended by the Tile Council of North America (TCNA). An Architectural Ceramics sales representative will advise you on general installation questions.

TECHNICAL INFORMATION

ORIGIN: CHINA
 AVAILABLE FINISHES: MATTE
 TYPE: GLASS
 EDGE: NOT RECTIFIED
 LOOK: SOLID / MONOCHROMATIC
 APPLICATION: WALL
 USE: COMMERCIAL & RESIDENTIAL
 PACKAGING: PLEASE CONSULT YOUR ACI SALES REP FOR PACKAGING INFORMATION

COLOR VARIATION: V1
 THICKNESS: 5/16"
 PORCELAIN ENAMEL INSTITUTE SCALE: N/A
 DYNAMIC COEFFICIENT OF FRICTION: N/A
 BREAKING STRENGTH: N/A
 WATER ABSORPTION: 0%
 STAIN RESISTANCE: YES
 FROST RESISTANCE: YES
 ENVIRONMENT: N/A

WEBSITE LINKS

www.architecturalceramics.com/catalogs
 PLEASE NOTE THIS LINK IS CASE SENSITIVE

CONTACT INFORMATION:

www.architecturalceramics.com

1.800.287.1742

For general sales inquiries: sales@architecturalceramics.com

For commercial & hospitality sample requests: samples@architecturalceramics.com

Headquarters: 800 E Gude Dr Suite F Rockville, MD 20850