

ADORN

Cement



ARCHITESSA

an Architectural Ceramics brand



COLORS



Ivy Blue



Pattern: 18 pieces



Ivy Cafe



Pattern: 18 pieces



Ivy Aqua



Pattern: 18 pieces



Ivy Navy



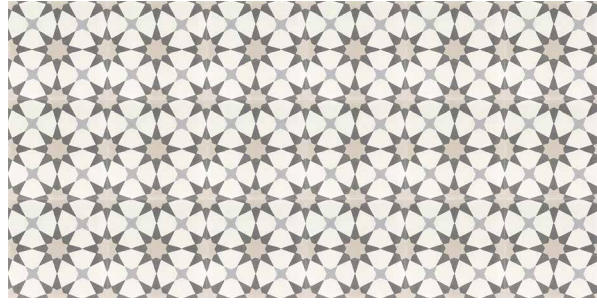
Pattern: 18 pieces

Cement tiles might show variation in color and design and will not be identical piece to piece. This is a result of its handmade process and the nature of cement. We suggest mixing tiles from different boxes during setting to produce a beautiful and naturally rich appearance.

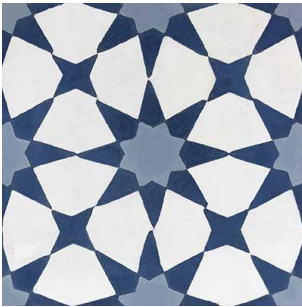
COLORS



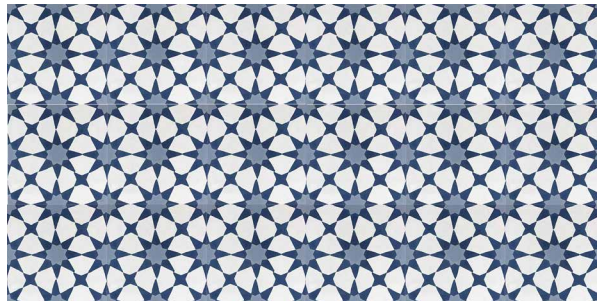
Celine Beige



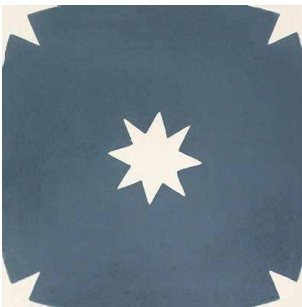
Pattern: 18 pieces



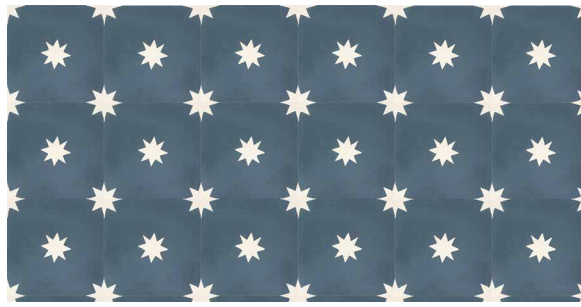
Celine Blue



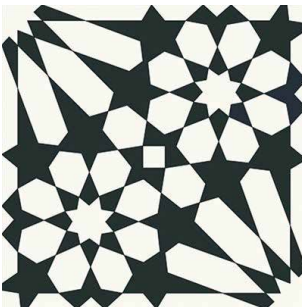
Pattern: 18 pieces



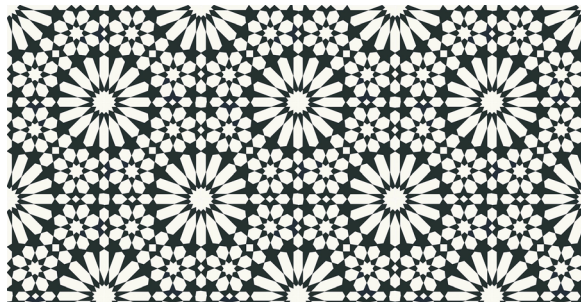
Stella Navy



Pattern: 18 pieces



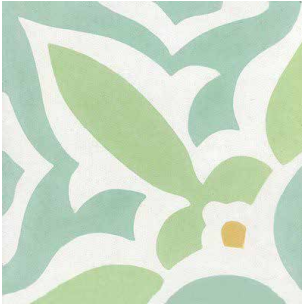
Sabrina Black



Pattern: 18 pieces

Cement tiles might show variation in color and design and will not be identical piece to piece. This is a result of its handmade process and the nature of cement. We suggest mixing tiles from different boxes during setting to produce a beautiful and naturally rich appearance.

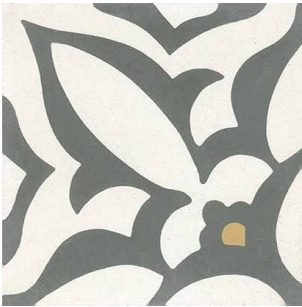
COLORS



Julia Green



Pattern: 18 pieces



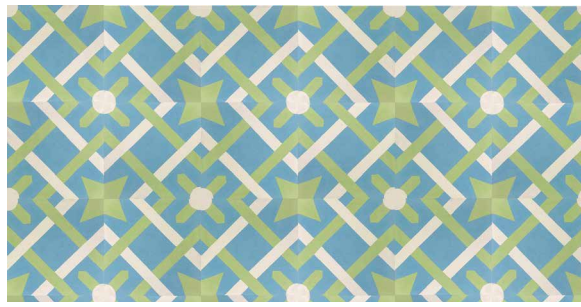
Julia Grey



Pattern: 18 pieces



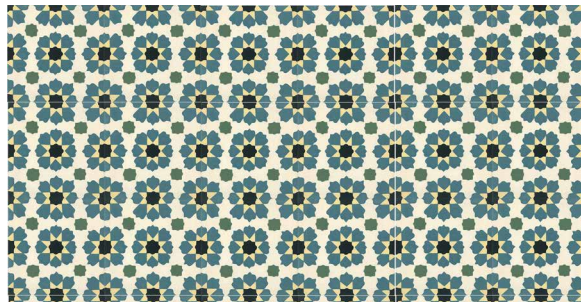
Caroline Blue



Pattern: 18 pieces



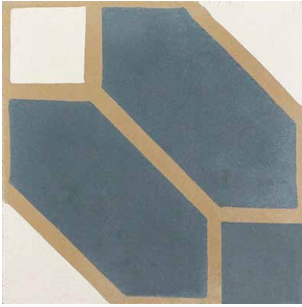
Flora Blue



Pattern: 18 pieces

Cement tiles might show variation in color and design and will not be identical piece to piece. This is a result of its handmade process and the nature of cement. We suggest mixing tiles from different boxes during setting to produce a beautiful and naturally rich appearance.

COLORS



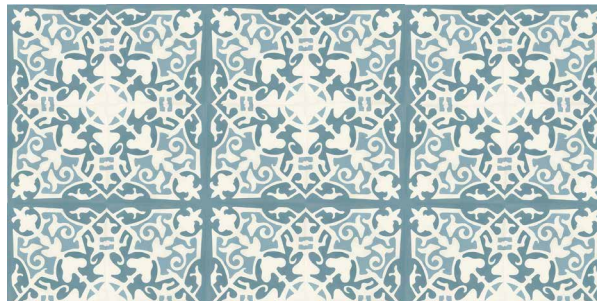
Daphne Blue



Pattern: 18 pieces



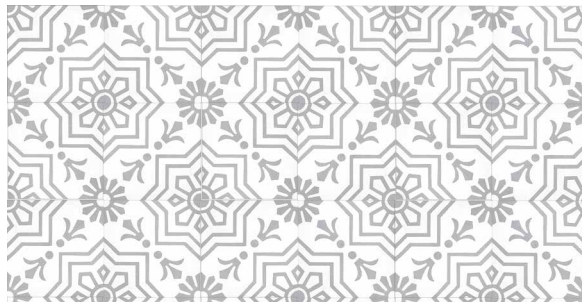
Elsa Blue



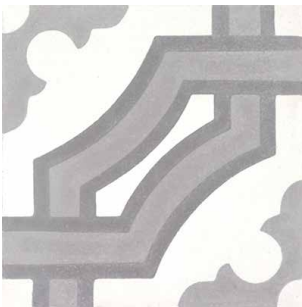
Pattern: 18 pieces



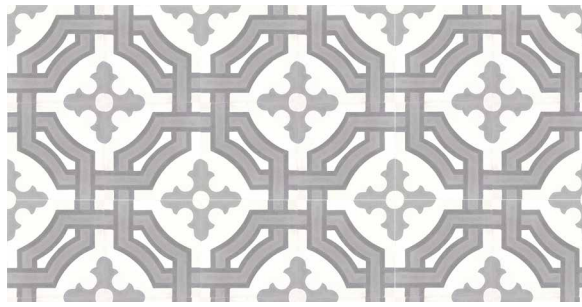
Anna Grey



Pattern: 18 pieces



Lydia Grey



Pattern: 18 pieces

Cement tiles might show variation in color and design and will not be identical piece to piece. This is a result of its handmade process and the nature of cement. We suggest mixing tiles from different boxes during setting to produce a beautiful and naturally rich appearance.

AVAILABLE SIZES

	FIELD
	8x8
Celine Beige	M
Celine Blue	M
Julia Grey	M
Julia Green	M
Ivy Aqua	M
Ivy Cafe	M
Ivy Navy	M*
Ivy Blue	M

	FIELD
	8x8
Lydia Grey	M
Sabrina Black	M*
Flora Blue	M*
Stella Navy	M
Anna Grey	M*
Elsa Blue	M
Daphne Blue	M

M= Matte *Stocked Sizes

Lead times for specialty & non-stocked items varies depending on product ordered, quantity, and destination. Please contact ACI to determine the lead time to order samples and material.

DESCRIPTION

Adorn is a patterned cement tile collection with patterns that make your heart smile. Intricate details liven the design of walls and floors in any area.

INSTALLATION & MAINTENANCE

Adorn may be installed using standard cement installation methods and materials, as recommended by the Tile Council of North America (TCNA). An Architectural Ceramics sales representative will advise you on general installation questions.

TECHNICAL INFORMATION

ORIGIN: MEXICO
 AVAILABLE FINISHES: MATTE
 TYPE: CEMENT
 EDGE: PRESSED
 LOOK: PATTERN; CEMENT
 APPLICATION: INDOOR/OUTDOOR
 USE: FLOORS, WALLS
 PACKAGING: PLEASE CONSULT YOUR ACI SALES REP

COLOR VARIATION: V2
 THICKNESS: 5/8"
 PORCELAIN ENAMEL INSTITUTE SCALE: N/A
 DYNAMIC COEFFICIENT OF FRICTION: 0.65
 BREAKING STRENGTH: 789 LBF
 WATER ABSORPTION: 14.94% (WITHOUT SEALER)
 STAIN RESISTANCE: MUST BE SEALED
 FROST RESISTANCE: YES
 ENVIRONMENT: N/A

WEBSITE

www.architessa.com/pages/datasheets

PLEASE NOTE THIS LINK IS CASE SENSITIVE

CONTACT INFORMATION:

www.architessa.com

1.800.287.1742

For general sales inquiries: sales@architessa.com

For commercial & hospitality sample requests: samples@architessa.com

Headquarters: 1803 Research Blvd. Suite 402 Rockville, MD 20850

INSTALLATION GUIDELINES

Care and Inspection

- 1) Inspect your order carefully. Architessa will not be responsible for any material that has been installed, installation of material means full acceptance.
- 2) Store material in a dry area and do not let boxes or tiles to get wet. Moisture or dampness might cause stains, color fades, cracking, pitting or efflorescence.
- 3) During installation and handling, be careful not to damage the finished surface, edges and corners of the tiles. Carry tiles face to face to avoid scratches.
- 4) Adorn as a cement-based product may have residues on the tile surface. Before starting the installation, it is highly recommended to use a clean cloth to remove any residues.

Installation

- 5) Adorn, as a product of cement and natural materials, is subjected to color and shade variations and it is highly recommended to mix tiles from the different boxes.
- 6) Installation must be made over a flat, level, stable and completely cured subfloor. Moisture, water evaporation or excess of water can cause stains, pitting, cracking and efflorescence to appear on the tile surface, this effect is a natural reaction of cement-based products.
 - 6.1) Isolation membrane is recommended to prevent cracking or fracturing from the movement of the subfloor, never installed tiles over uncured subfloors.
 - 6.2) Waterproof membrane is recommended in all wet areas to prevent leakage of water through to the subfloor or spaces below.
 - 6.3) Radiant heating systems can be used with cement tiles and it is recommended to use a membrane, concrete is a good heat conductor, be sure subfloor, mortar bed and tiles are completely dried to avoid efflorescence.
- 7) When installing we recommend to place the center tiles first, then the borders and finally the field tiles that will surround the pattern.
- 8) Use a high quality thin-set adhesive based in cement, such as a Laticrete or Mapei products. Contact adhesive manufacturer to recommend the appropriate product and Follow manufacturer's instructions. 3/8" mortar bed is recommended.
- 9) Make sure that adhesive is applied to the full back of each tile (100% coverage). It is recommended to apply the back buttering to get a better adherence.
- 10) Do not beat with a mallet or rubber hammer to set tiles, this might cause breakage or form thin cracks that will show up when applying the grout or sealer, perfectly level tiles using hand pressure only, cement tiles cannot be polished down. Remove excess adhesive from the surface with a damp cloth or sponge when it is still fresh to avoid any stains.
- 11) Cement tiles can be cut using a sharp diamond blade in conjunction with water to avoid the chipping of edges.
- 12) Allow tiles and mortar bed to dry out completely before starting to seal and/or polish the tiles. Do not cover the tiles to allow breathing and evaporation. Do not step on tiles until mortar bed is dried.
- 13) For out-doors installations, a roof is highly recommended where cement tiles will be installed to avoid color fading caused by direct sunlight, tiles might also be polished with wax for extra protection and repel direct sunlight.

INSTALLATION GUIDELINES

Cleaning

14) After installation, wash floor with a PH neutral detergent. Use a single disc floor machine with a white pad to remove any residues, remove excess dirt and water. Do not use any acids or alkalines to clean tiles.

15) Use a PH neutral cleaner and fine sandpaper to remove any stain or residues.

Do not allow water or other liquids to spot, pond or ring on the surface tiles.

Sealing, Grouting & Waxing

16) Treatments must be done after installation and when tiles are completely dry. It is highly recommended to make a test on a single piece to check the desired finish.

17) Cement Tiles are porous and not pre-sealed. Therefore, sealing with a penetrating sealer is necessary before grouting; we recommend Miracle, Stonetech, Fila and Drytreat sealers.

17.1) Apply 2 thin coats of a penetrating sealer and a final coat of a Topical sealer to create a protection film over the tile surface, allow it to dry completely, refer to manufacturer instructions. Use a dry absorbent white cloth, clean mop or a solvent resistant sprayer and remove all excess sealant from the tile surface.

17.2) For extra protection it is recommended to polish the Tiles with wax to avoid penetrating stains.

18) Do not use dark color or dyed grouts unless it matches the color of your tile, as they will cause staining specially in light colors, is recommended using un-tinted grouts, on solid color tiles use grout of the similar color. We recommend making a test in a single piece to see the results before applying it to the complete area.

19) Cement tiles are installed edge to edge with a minimal grout line using un-sanded grout to allow expansion, for large grout line use a sanded grout. Recommended grout joint width is 1/16"-1/8". Joints should be full and free of all voids and pits. Once grout has been applied and starts to dry, remove excess grout immediately. Do not affix duct tape, gaffer tape or acid tapes directly on to cement tiles surface this can cause discoloration or staining.

20) There are different types of sealers that offer different finishes, matt, enhanced and gloss sheen, if you prefer a glossy finish Tiles can be polished with wax, this process must be done by a professional. Never grind or buff Tiles with an abrasive pad or disc, this process will damage the color surface.

21) After cleaning process has been completed and accepted, it is recommended to re-seal the tiles and grout lines for extra protection, especially in water places to avoid any water filtrations and moisture.

INSTALLATION GUIDELINES

Maintenance

- 22) For ongoing maintenance, clean regularly with a neutral detergent and buff tiles with a soft white pad, we recommend to add a capful of liquid wax to the water for extra protection.
- 23) Extremely heavy foot traffic or out-door installations may require additional maintenance. A natural patina will occur as the floor is maintained and wears.
- 24) The use of properly sized walk-off mats at entrances and sweeping or dust mopping is most important to remove abrasive grit that may cause wear.

If you have any questions, contact your Architessa Sales Reps before starting installation of your tiles.