

# MERGE

Ceramic

 ARCHITESSA

an Architectural Ceramics brand



[www.architessa.com](http://www.architessa.com)

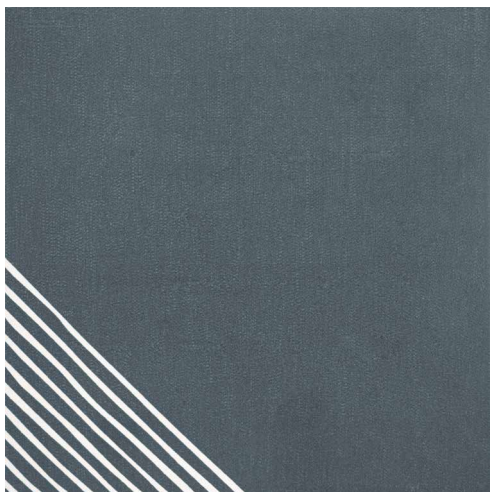


Merge White Diamond 8x8, White Lines 8x8

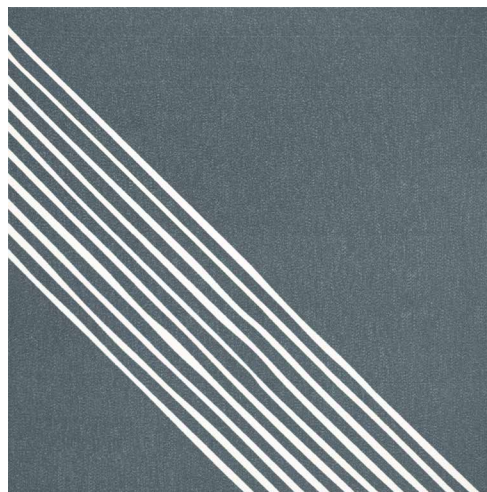


## COLORS

---



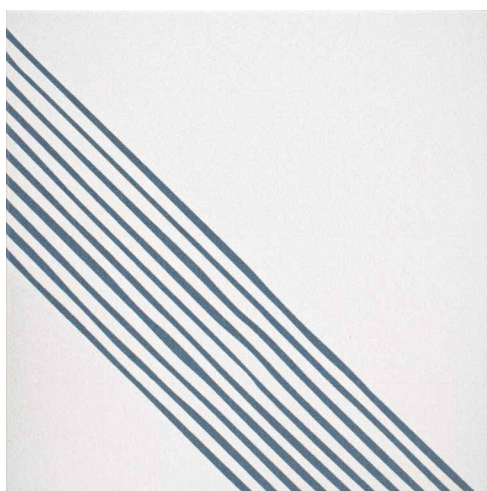
Indigo Diamond



Indigo Lines



White Diamond



White Lines

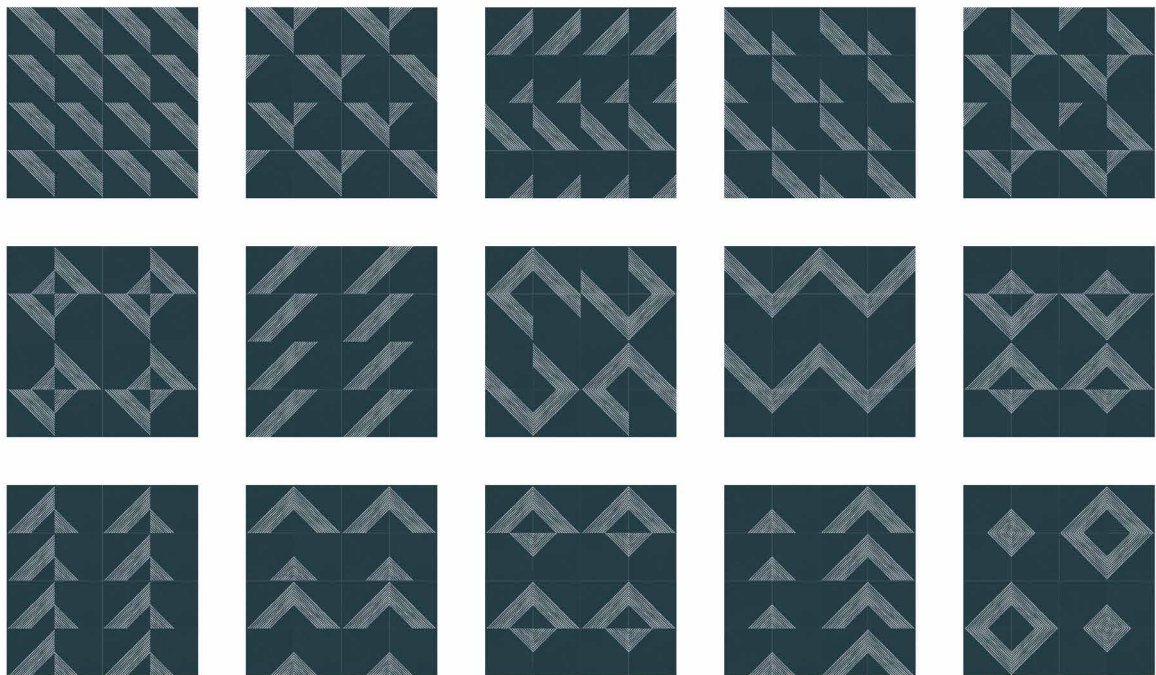
PATTERN OPTIONS



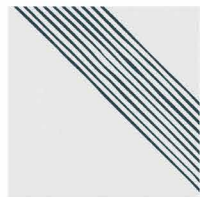
Indigo Diamond



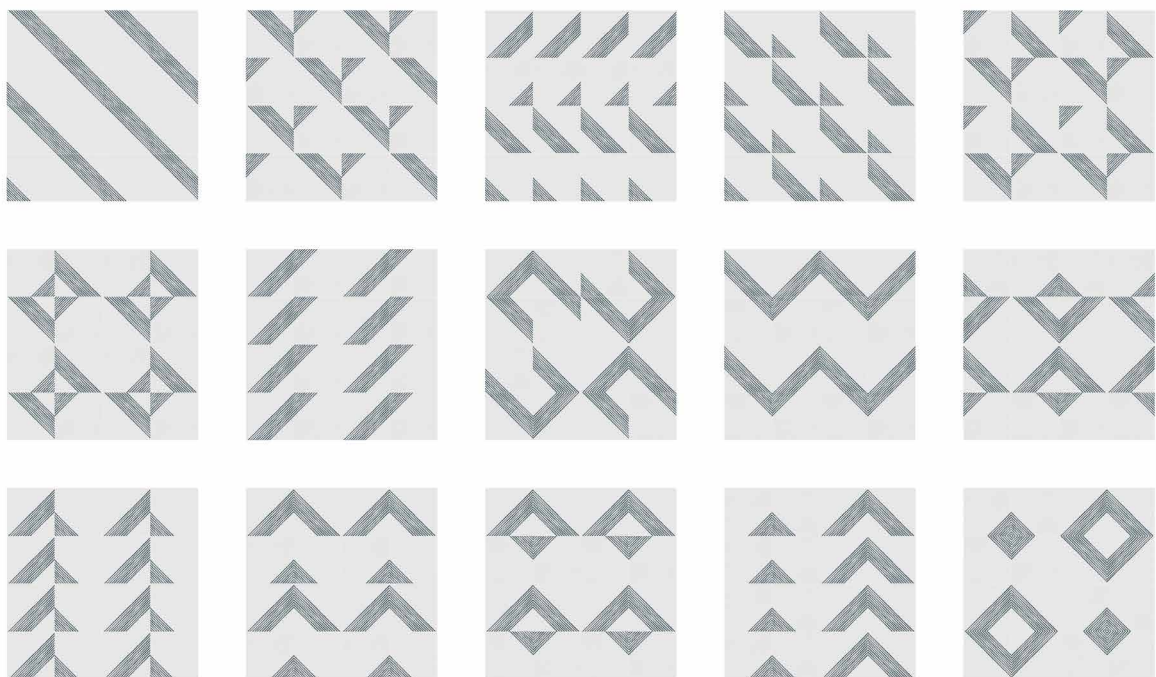
Indigo Lines



White Diamond



White Lines



## AVAILABLE SIZES

	FIELD
	8x8
Indigo Diamond	M
Indigo Lines	M
White Diamond	M
White Lines	M

M= Matte

Lead times for specialty & non-stocked items varies depending on product ordered, quantity, and destination. Please contact Architessa to determine the lead time to order samples and material.

## DESCRIPTION

MERGE is a culmination of pattern and visual motion in a matte and pressed ceramic tile collection. Design your indoor or outdoor floors and walls with this intricate and versatile tile offering.

## INSTALLATION &amp; MAINTENANCE

Merge may be installed using standard porcelain installation methods and materials, as recommended by the Tile Council of North America (TCNA). An Architessa sales representative will advise you on general installation questions.

## TECHNICAL INFORMATION

ORIGIN: BRAZIL  
AVAILABLE FINISHES: MATTE  
TYPE: CERAMIC  
EDGE: PRESSED  
LOOK: PATTERN  
APPLICATION: FLOOR AND WALL  
USE: INDOOR COMMERCIAL AND RESIDENTIAL  
PACKAGING: PLEASE CONSULT YOUR SALES REP

COLOR VARIATION: V1  
THICKNESS: 8.2 MM  
PEI SCALE: 2 - INDIGO, 4- WHITE  
DCOF:  $\geq 0.42$   
BREAKING STRENGTH: 250 LBS  
WATER ABSORPTION: < 3%  
STAIN RESISTANCE: YES  
FROST RESISTANCE: YES  
ENVIRONMENT: 17% PRE-CONSUMER CONTENT

## WEBSITE

[www.architessa.com/products](http://www.architessa.com/products)

## CONTACT INFORMATION:

[www.architessa.com](http://www.architessa.com)

1.800.287.1742

For general sales inquiries: [sales@architessa.com](mailto:sales@architessa.com)

For commercial & hospitality sample requests: [samples@architessa.com](mailto:samples@architessa.com)

Headquarters: 1803 Research Blvd. Suite 402 Rockville, MD 20850