

OSAKA

Porcelain

 ARCHITESSA

an Architectural Ceramics brand



www.architessa.com



OSAKA Fracture Ash 24x24



OSAKA Washi Mix White 8x8 / Ash 24x24

OSAKA

 ARCHITESSA
an Architectural Ceramics brand

OSAKA Cream 24x24

www.architessa.com

COLORS



Cream



Fracture Cream



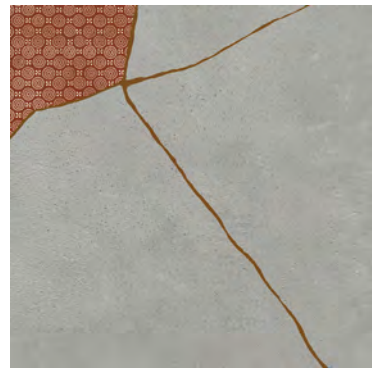
Washi Fracture Cream



Ash



Fracture Ash



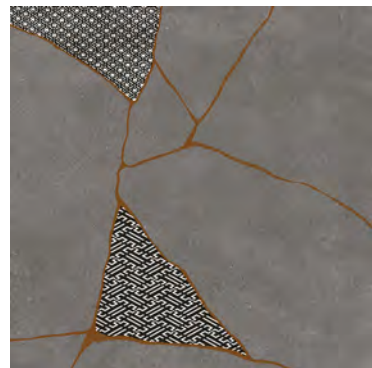
Washi Fracture Ash



Steel



Fracture Steel



Washi Fracture Steel



Charcoal

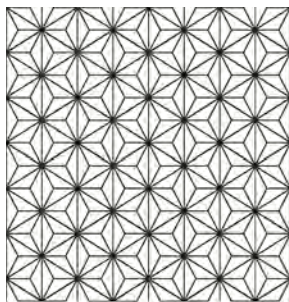


Fracture Charcoal



Washi Fracture Charcoal

COLORS - DECO



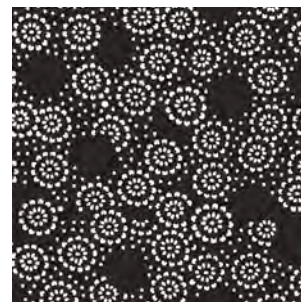
Washi White



Washi Terra



Washi Cobalt



Washi Black

COLORS - MIXED DECO



Washi-Mix Terra



Washi-Mix Cobalt



Washi-Mix White

AVAILABLE SIZES

	FIELD			
	36x36	24x48	24x24	8x8
Ash	N	N	N*	N
Charcoal	N	N	N*	N
Cream	N	N	N*	N
Steel	N	N	N*	N
Fracture Ash		N	N*	
Fracture Charcoal		N	N*	
Fracture Cream		N	N*	
Fracture Steel		N	N*	
Washi Black				G
Washi Cobalt				G*

	FIELD			
	36x36	24x48	24x24	8x8
Washi Terra				G
Washi White				G*
Washi-Mix Cobalt				G
Washi-Mix Terra				G
Washi-Mix White				G
Washi-Fracture Ash			N	
Washi-Fracture Charcoal			N	
Washi-Fracture Cream			N	
Washi-Fracture Steel			N	

N= Natural, G= Glossy | *Stock Sizes

Lead times for specialty & non-stocked items varies depending on product ordered, quantity, and destination. Please contact Architessa to determine the lead time to order samples and material.

DESCRIPTION

OSAKA concrete-look ceramic tiles are inspired by the Japanese art of repairing broken pottery with golden lacquer. OSAKA celebrates the organic sophistication of re-composition with golden veining across its textured surfaces.

INSTALLATION & MAINTENANCE

OSAKA may be installed using standard porcelain installation methods and materials, as recommended by the Tile Council of North America (TCNA). An Architessa sales representative will advise you on general installation questions.

TECHNICAL INFORMATION

TYPE: GLAZED PORCELAIN

ORIGIN: ITALY

AVAILABLE FINISHES: MATTE

EDGE: RECTIFIED

THICKNESS: 10MM

LOOK: CONCRETE

SHADE VARIATION: 2 - SLIGHT (NATURAL),

3 - MODERATE (FRACTURE),

4 - SUBSTANTIAL (WASHI FRACTURE)

SURFACE ABRASION: N/A

DCOF: >0.42 (MATTE)

BREAKING STRENGTH: 1300 N MIN.

WATER ABSORPTION: ≤0.5%

STAIN RESISTANCE: YES, CLASS 5

FROST RESISTANCE: YES

ENVIRONMENT: >40% PRE- CONSUMER

RECYCLED CONTENT, EPD

CONTACT INFORMATION:

www.architessa.com

1.800.287.1742

For general sales inquiries: sales@architessa.com

For commercial & hospitality sample requests: samples@architessa.com

Headquarters: 1803 Research Blvd. Suite 402 Rockville, MD 20850