

**PLANC**  
Stone

 **ARCHITESSA**  
an Architectural Ceramics brand



[www.architessa.com](http://www.architessa.com)



# PLANC™

Large Format Stone Veneer System

## EXPERIENCE THE ART OF LINEAR WALL CLADDING

PLANC™ range consists of large format linear stone strips, carefully crafted in modular sizes, and expressly designed to cover expansive walls for both residential and commercial projects.

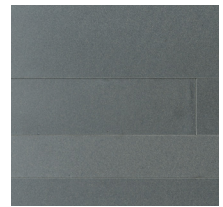
This new wider, longer format allows the stone's intrinsic character to fully shine - from sprawling ancient mineral formations to subtle tonal variations, our new PLANC™ system showcases natural stone at its very finest.



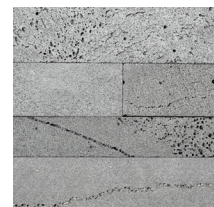
## PLANC™ Colors



Ebony Basalt



Grey Basalt



Platinum



Silver Grey Quartz



Graphite



RESIDENCE, SYDNEY, AU  
PLATINUM PLANC | CUSTOM



## PLANC™ Specs

Built to generous scale, the new **large format** tile, PLANC™, yields a breath-taking and expansive style. At 31.5" in length, each tile stretches well beyond typical finish dimensions found in the stone industry, ensuring that each project using it will truly stand out. We show PLANC™ in a staggered format, however each tile set is supplied as 3 loose strips so patterns and staggers are unique to each installation.

### Unit Dimensions

<b>One PLANC™ SET:</b> 31.5" Long x 3.1" / 2.4" / 5.5" Tall
<b>Thickness:</b> 0.8" Thick

### Weight

12.5 lbs/sq ft
-------------------

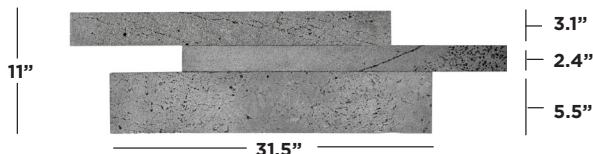
### Coverage

2.4 sq ft/set
---------------

### PACKAGING & USAGE SPECS

Pc / Set	Sq Ft / Set	Sets / Crate	Sq Ft / Crate
3	2.4	63	151.2
Interior	Exterior	Freeze / Thaw	Wet Applications
✓	✓	✓	✓

### One PLANC™ SET



Displayed here in an optional staggered formation. For layout options, consult our PLANC™ pattern guide.

### Finger-jointed Corner Example



Corners are mitered or toothed together in interlocking fashion on-site

## The Art of Linear Wall Cladding

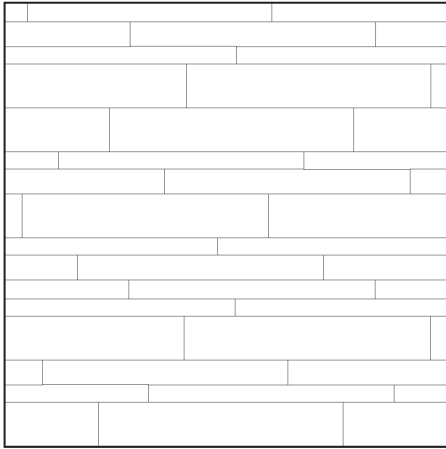
Comprising of Lavastone, Basalt, and Quartz, the PLANC™ format represents an original and modern way of integrating natural stone into a project, putting on display each stone's unique character and distinctive style.



## Popular Patterns Guide

Each set of PLANC™ comes to your project as 3 loose, large-format strips of stone in our pre-configured sizes of 31.5" long by 2.4", 3.1" and 5.5" high. Using your imagination as your guide, PLANC™ can be laid in many different patterns and combinations. Below are the most commonly used patterns that you can specify with your installation team.

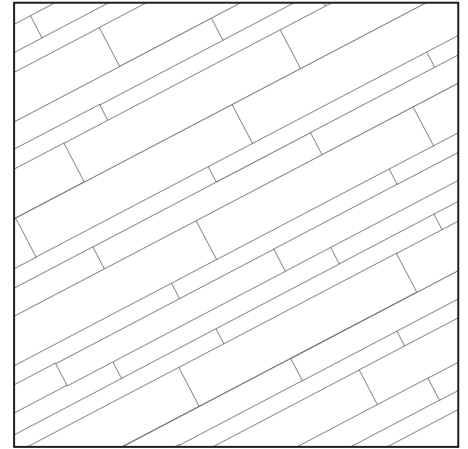
**Running Bond**



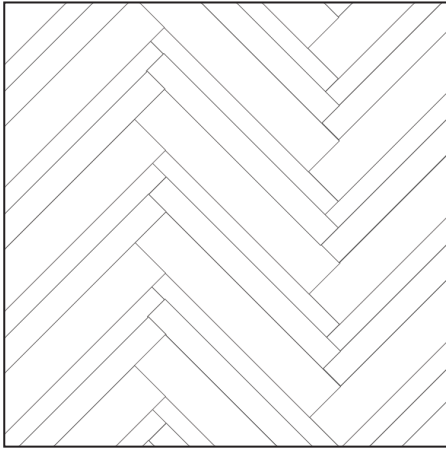
**Soldier Stacked (Dry-Stacked)**



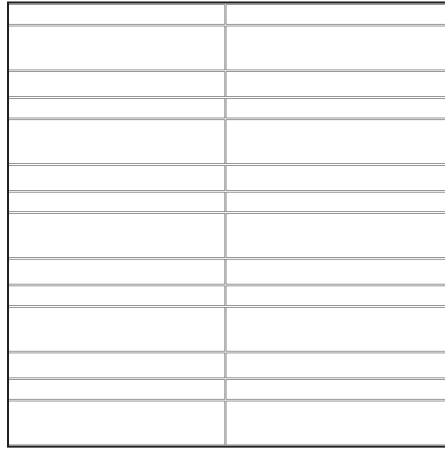
**Angular, Randomized Running Bond**



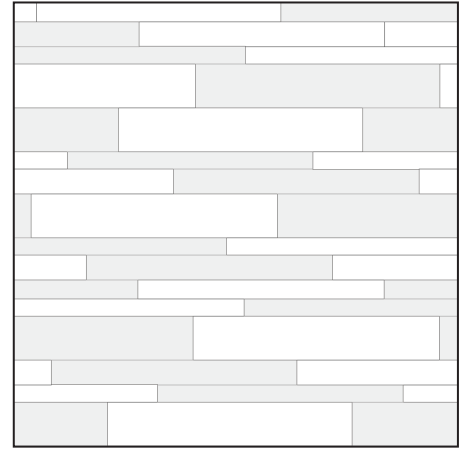
**Herringbone**



**Soldier Stacked (1/16" Joints, Grouted)**



**Dimensionalized, Running Bond**



\*Dimensionalize individual strips w/ spacers in setting bed for 3D look.

**Striking Architectural Lines in one Highly Flexible System. Start Your Dreaming.**

Packaged as three loose strips per set, PLANC™ can be laid staggered, symmetrical, asymmetrical, or simply however catches your eye. In PLANC™, we deliver a versatile large format veneer with a truly streamlined appearance.



RESIDENCE, LOS ANGELES, CA  
**PLATINUM PLANC**





RESIDENCE, SYDNEY, AU  
**PLATINUM PLANC | CUSTOM**



RESIDENCE, MINNEAPOLIS, MN  
**SILVER GREY QUARTZ**



## CONTACT INFORMATION:

[www.architessa.com](http://www.architessa.com)

1.800.287.1742

For general sales inquiries: [sales@architessa.com](mailto:sales@architessa.com)

For commercial & hospitality sample requests: [samples@architessa.com](mailto:samples@architessa.com)

Headquarters: 1803 Research Blvd. Suite 402 Rockville, MD 20850

# PLANC™

## Installation Guide for PLANC™ Large Format Tile



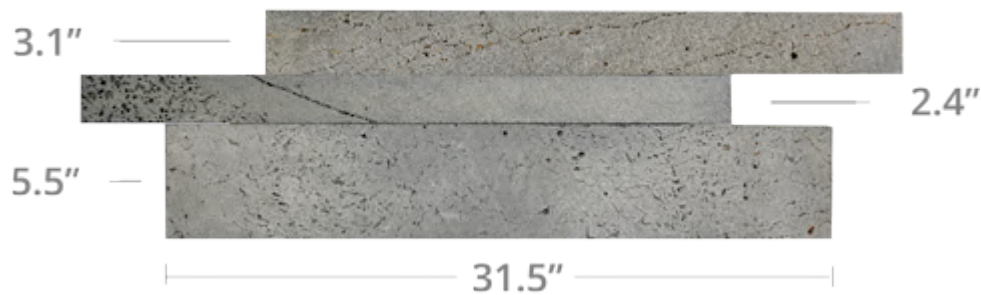
### **Introduction to Planc™**

For more information not contained in this document, contact your local distributor for assistance. Planc™ Large Format Tile products are designed to offer a large scale linear looking natural stone veneer option, open to being set in a variety of patterns. Planc™ Large Format Tiles adhere to the following physical properties

STONE CLASSIFICATION: Basalt, Quartz, or Lavastone

COLOR: Platinum, Graphite, Grey Basalt, Ebony Basalt, Silver Grey Quartz

SIZE: Each Planc™ Set consists of three loose strips of stone. Each strip is 31.5" long, and each set will have one strip at each of the following heights, 5.5", 3.1", 2.4". All strips are .8" thick and each set covers 2.4 sq ft.



WEIGHT: approx 12.5 lbs per sq ft, or 30 lbs per set.

PACKAGING: 1 set = 2.4 sq ft. ; 63 sets per crate = 151.2 square feet per crate

### **Estimating Stone Required**

Determine the amount of the Planc™ Large Format Tile to be ordered by measuring the area to be covered. Measure the length times the height to determine the square footage required. Subtract the square footage for window and door openings. Always allow a minimum of 10% for error and wastage when ordering.

### **Professional Installation Recommended**

PLANC™ Wide Format Stone Veneers can be installed by most home handyman with a limited knowledge of building and construction; however we strongly recommend they be installed by professional licensed tradesmen.



### **Tools and Material Needed**

[1] For cutting and modifying Planc™ Large Format Tile, a quality tile **wet saw with a continuous rim diamond blade** is required and should **tilt** if miter cuts are necessary; these are usually available for hire on a daily basis from large equipment hire firms in your area. [2] An angle grinder may be used for around small protrusions in the wall such as pipes, steelwork etc. [3] Steel trowel, [4] ½" (half-inch) notched trowel, [5] large sponge, and [6] recommended tile thinset adhesive, meeting or exceeding ANSI 118.4 & 118.11 standards.

**Optional materials** that **may be required**, depending on the substrate and application include:

Metal Lath  
Thick Bed Mortar  
Waterproofing Membrane  
Grout and Grout Spacers  
Natural Stone Sealer

### **Preparing Your Substrate for Installation**

It is mandatory that local building codes be followed in the installation of Planc™ Large Format Tile. Please consult your building authority with any specific questions relating to the local building codes.

Planc™ Large Format Tiles weigh approximately 12.5 lbs per sq ft; therefore it is critical that they are fixed to an appropriate substrate to ensure a successful installation. Planc™ Large Format Tiles may be applied over any masonry surface, concrete block, brick, cement, etc. Painted surfaces must be sandblasted, or otherwise stripped of paint. If a new wall needs to be built of a thinner and lighter substrate, cement board is the correct material to use. **PLANC™ Wide Format Stone Veneer SHOULD NOT be installed over drywall or sheet rock.**

All walls should be checked for plumb and corrected as necessary to within 1/8" tolerance over 10' and no more than 1/16" tolerance in any 2'.

### **Installing Over Open Stud Walls**

Planc™ Large Format Tiles can be installed over open stud walls using either cement board or a combination of wood sheathing, metal lath, and scratch coat. First ensure the wood or steel frame is structurally capable of supporting the weight of the Planc™ Large Format Tiles.

If using cement board, it must be a minimum of 1/2" thick to support the weight of the Planc™ Large Format Tiles and must be securely fixed to the framework of either wood or steel. We suggest that the board be glued and screwed to the frame. First, cover the entire frame, where contact with the cement board is made, with a good quality mastic type adhesive and then fix the cement board to the frame, screwing at 24 inch centers using screws that are a minimum of 2 inches long. To ensure safety, strength and permanent fixing, this work should only be done by a qualified and licensed builder. If project is either exterior or will be exposed to moisture, a waterproofing / anti fracture membrane, to comply with ANSI 118.10 will be required between the cement board and the setting material.

If using wood sheathing, it must be exterior grade and covered with an exterior sheathing product such as 15 lb builders felt or 4 mil polyethylene. A 3.4# galvanized diamond wire metal lath is then to be affixed to the substrate per manufacturer's recommendations and then covered with a thick bed mortar mix. If project is either exterior or will be exposed to moisture, a waterproofing / anti fracture membrane, to comply with ANSI 118.10 will be required between the scratch coat and the setting material.

Please refer to Appendix A for detailed substrate drawings over open stud walls.

### **Installing Over Block, Brick, CMU, or Poured Concrete**

First ensure that the surface is clean and free of any foreign agents, including paint that may interfere with the bond between stone and substrate. This may require light sandblasting or waterblasting.

\*\* Special note for pre-fabricated concrete tilt up construction – all release agents must be removed from concrete surfaces prior to Planc™ Large Format Tile installation.

Next, in all installations over brick, or over other concrete substrates with uneven surfaces, a thick bed mortar mix is troweled onto the substrate to even out any inconsistencies in the substrate and provide a mortar base with which to adhere the setting material to. If the project is either exterior or will be exposed to moisture, a waterproofing / anti fracture membrane, to comply with ANSI 118.10 will be required between the mortar bed and the setting material.

Please refer to Appendix A for detailed substrate drawings over concrete substrates.

### **Installing Over Steel**

First ensure that the surface is clean and free of any surface contamination, such as rust, dirt, paint, and manufacturing oils. **Refer to the steel manufacturer's guidelines for adequately removing all manufacturing oils as to not interfere with the bond between Planc™ Large Format Tiles and substrate.** If possible, tack weld a wire lath onto the steel in accordance with ANSI A108.0 – 3.3 standards. Once the lath is in place, a thick bed mortar mix is troweled onto the steel to fully cover the lath and form a suitable bonding substrate with which to adhere the setting material to. If the project is either exterior or will be exposed to moisture, a waterproofing / anti fracture membrane, to comply with ANSI 118.10 will be required between the mortar bed and the setting material.

Alternatively, Planc™ Large Format Tiles can be adhered directly to a contaminant-free steel substrate using an epoxy based tile adhesive meeting or exceeding ANSI 118.3



standards. This method should only be used when tack welding wire lath and creating a mortar bed on the steel substrate is not feasible. A waterproofing / anti fracture membrane is not required in this method.

Please refer to Appendix A for detailed substrate drawings over steel.

### **Installing the Planc™ Large Format Tiles**

Make certain the back of each tile is free of dirt, sand, or loose particles. When necessary, wash them completely. If the back of the tile is dry, dampen it first with a wet sponge, but do not saturate. This prevents the natural stone from pulling the moisture from the adhesive, allowing it to cure naturally and with a stronger bond.

Select a tile thinset adhesive that meets or exceeds ANSI 118.4 and 118.11 standards, and mix per the manufacturer's instructions. When laying Planc™ Large Format Tiles it is necessary to start the bottom row on a level line in order to maintain consistent levels in each row **as you work up the wall**. Always start installing PLANC™ at the bottom row, and **start each row at an outside corner** if one exists. It is also important that they rest on a secure base such as a concrete floor or footing to help carry the weight until the thinset has fully set.

Planc™ Large Format Tiles can be laid in a variety of patterns to suit the design of the project. Most typical is a **randomized, staggered fashion**, in an effort to minimize any vertical seams lining up from one course to the next. However, the loose nature of this tile product allows for it to be laid in many other patterns including straight stacks, symmetrical / asymmetrical columns, vertically, herringbone, and many others. It's recommend to lay out the pattern in a large area before installing on the wall to ensure the desired look is achieved.

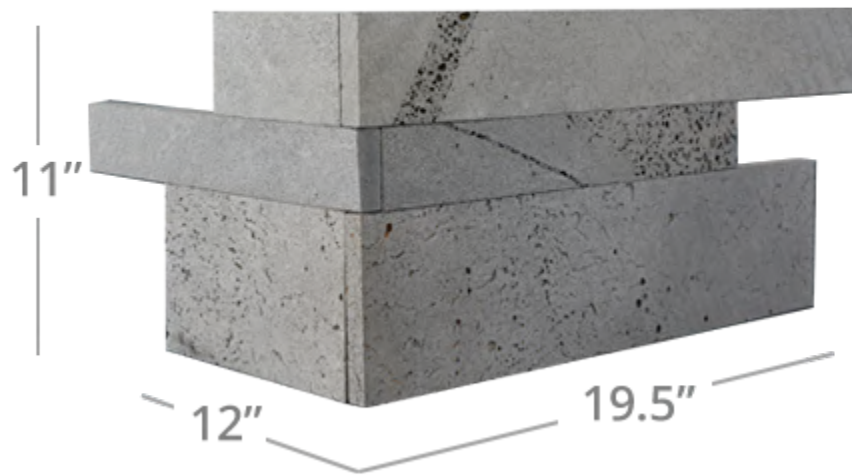
When fixing the tiles to the wall use a generous amount of recommended tile thinset adhesive and apply it to the back of each tile and to the wall. Screed the tile adhesive on to the wall using a 1/2" square notch trowel and then lightly back butter the back of each tile as its being set. By applying the adhesive to the back of each tile and to the wall, this ensures the maximum possible adhesion to your wall surface, as all the gaps, voids and cracks are filled.

Press each tile into the adhesive, rotating slightly, forcing some of the adhesive to squeeze out freely. Any adhesive forced out beyond the finished joint or on the panel surface itself must be removed before the adhesive is allowed to set. Be sure not to allow any adhesive to harden on the face of the panels as this will help in the cleanup process. **Tight joints will provide a neat appearance**, but Planc™ Large Format Tiles can also be set using a grout joint between the tiles to achieve a different look.

### **How to Address Corners**

Outside 90 degree corners can be handled either by **[1]** miter cutting individual tiles or **[2]** using an overlapping corner technique where the cut edge of each tile alternates position as you work your way from course to course. The overlapping technique is only possible with the Lavarock color since the cut edge will have the same finish as the face

of the tile. See photo below for details. Miter-cuts should be used in all off-angle (45°, 60°, etc) corner applications.



#### **Special Note on Moisture Rich Environments and Freeze Thaw Climates**

Natural stone is an excellent choice of building material for any environment and climate, be it interior or exterior, adjacent or completely submerged in water, desert hot or polar cold. Certain products should be used and procedures followed in some of these environments, as noted below:

**Moisture Rich Environments** – It is critical that a waterproofing membrane meeting or exceeding ANSI 118.10 standards be applied between the substrate and tile adhesive to form a waterproof barrier. This will ensure moisture will not reach the substrate material and potentially degrade its ability to support the tile installation.

**Pool Applications** – It is especially important to **thoroughly seal** your pool application; note that you may be required to **re-seal** your pool application more frequently than other areas of your project. **We recommend re-sealing your pool application every 18-24 months**, or sooner if you notice your sealer has worn off or any adverse affect to your stone.

**Freeze / Thaw Climates** – Planc™ Large Format Tiles will not be affected at all by the normal freezing and thawing of the climate which they are exposed to, however, the same cannot be said about the substrate to which they are applied. It is critical that a waterproof / anti-fracture membrane meeting or exceeding ANSI 118.10 standards be applied between the substrate and tile



adhesive to form a water and fracture proof barrier, capable of resisting substrate movement during freeze thaw cycles.

### **Special Note on Control Joints on Exterior Façade Installations**

Natural Stone is a stable building material and will not move on its own. All buildings however will move over time, settling in response to applied loads, foundation settlement, traffic vibrations, and changes in temperature and humidity.

In determining if and where movement joints may be needed as part of a stone veneer installation, consideration should be given to where differential movement is expected, for example at the intersection of different materials or at transition points between two different type of wall assemblies. Movement joints should be included as part of the building envelope by the structural engineer, and their location and should be clearly indicated on the building elevations.

Stone veneer installations should not be installed directly over top of existing movement joints. The installation should stop at the movement joint, and restart on the other side of the joint with a backer rod and **color-matched sealant** used to fill the movement joint gap.

### **Post Installation Guidelines**

#### **Cleaning**

Work carefully and meticulously, to avoid adhesive dropping onto the tiles during installation. Should some thinset find its way onto the face of a tiles, allow it to dry until it is crumbly, then pick it off carefully, and use a soft bristle brush to lightly clean the spot where the adhesive may have left a slight mark.

Excess dirt and film may be removed using clean water and a soft bristle brush. It is important not to allow excessive adhesive to dry on face of the tiles. Carefully remove it with a damp rag prior to it hardening.

**WARNING:** Acidic cleaning agents must not be used under any circumstances as this will cause unnecessary damage to natural stone and void any warranty.

#### **Sealing**

Natural Stone products must be sealed with a good quality penetrating sealer for all exterior applications. recommends sealing interior applications of Grey Basalt and Ebony Basalt Planc to assist in keeping these polished finishes clean and

smudge free. Always test the sealer on an off-cut or in an inconspicuous place on the finished stone wall before applying to the entire stone surface.

Follow the manufacturer's instructions regarding the application of the sealer. Sealed stone may be easier to keep clean than unsealed stone and certain sealers also repel stains. However, sealers must be periodically reapplied, especially on exterior applications, and could alter the natural coloring of the stone.

If you've installed Planc™ Large Format Tiles in a pool, it will be important to re-seal your application periodically. We recommend every 18-24 months, or whenever you notice that your sealer has worn off. This maintenance will ensure the stone stays stable and in good condition.

### **Ongoing Maintenance**

Though natural stone will last many lifetimes, routine maintenance may be required from time to time. Depending on the application – as with any wall finish - various types of scaling or build-up may occur. Should you experience a need to clean your Planc™ Large Format Tiles please adhere to the following recommendations:

1. Regular dusting for interior applications and hose washing for exterior applications is recommended.
2. In the event that cleaning agents are needed, please select a natural detergent that is non-corrosive and non-acidic to remove build-up in problem areas. Test your detergent in an inconspicuous place to verify compatibility and results.
3. In some cases, a low grade pressure wash may be used. However, the stone should never be exposed to a direct angle of attack from the nozzle. Note that up-close attack from a pressure washer may corrode the stone, so please stand a minimum of 5 feet away when pressure washing.

### **WARNING**

Please DO NOT:

1. Acid wash the stone.
2. High-Pressure Wash the stone (directly or indirectly).
3. Use any sharp object, such as a steel scraper, knife, or screwdriver, to remove stubborn deposits from the face of the stone. This can result in damage to the natural texture of the product.

### **Disclaimer**

This Installation Guide is intended for general informational purposes only and should not be considered as professional technical or legal advice. It is designed as a reference only and shall not be construed as a substitute to seeking professional advice relevant to your particular circumstances to evaluate its accuracy, completeness and relevance for your



specified application, or employing professional and licensed contractors to install Products. Therefore we do not take any responsibility for any error or misinformation that may be contained within this guide.

## **Warranty**

### **Norstone USA, INC, Rassan Trading Inc. — Limited Warranty**

Subject to these terms and conditions, all subsidiaries and affiliates warrants its products for a period of fifty (50) years from the date of original purchase from Companies against manufacturing defects when used on a structure which conforms to all building codes and regulations and when installed in accordance with Companies' instruction, specifications and guidelines. In the event of a defect, Companies will credit the cost of the products purchased or, at Companies' option, repair or provide new products to replace any products determined to be defective. This warranty is limited to the original purchaser and may not be transferred to any subsequent owner. This limited warranty does not cover damage from: a) settlement of the building or improvement or other structural movements; b) contact with chemicals or paint; c) deterioration or discoloration due to airborne contaminants; or d) staining or oxidation. This limited warranty covers only manufacturing defects in products. not responsible for labor costs in removal and replacement of defective products.

THIS LIMITED WARRANTY DOES NOT COVER, AND SHALL AUTOMATICALLY BECOME NULL AND VOID, FOR THE FOLLOWING REASONS: (i) ABUSE; (ii) MISUSE; (iii) ACCIDENT; (iv) IMPROPER INSTALLATION, APPLICATION OR MAINTENANCE; (v) FAILURE TO NOTIFY & COMPANIES OF A CLAIMED COVERED DEFECT IMMEDIATELY WHEN NOTICED; OR (vi) FAILURE TO USE THE PRODUCTS IN ACCORDANCE WITH INSTRUCTIONS, SPECIFICATIONS AND GUIDELINES. THIS WARRANTY IS EXCLUSIVE, AND EXCEPT AS EXPRESSLY SET FORTH HEREIN, ]MAKES NO OTHER WARRANTIES OF ANY KIND, EXPRESS OR IMPLIED, AND DISCLAIMS ALL WARRANTIES, INCLUDING ANY IMPLIED WARRANTY OF MERCHANTABILITY OR FITNESS FOR A PARTICULAR PURPOSE. IN ANY EVENT, THE SOLE REMEDY OF THE ORIGINAL PURCHASER SHALL BE A CREDIT FOR THE COST OF THE PRODUCTS PURCHASED FROM NORSTONE & COMPANIES' OR, AT NORSTONE & COMPANIES' OPTION, REPAIR OR REPLACEMENT OF SUCH PRODUCTS. NORSTONE & COMPANIES SHALL UNDER NO CIRCUMSTANCES, WHETHER FOR A FAILURE OF ITS LIMITED WARRANTY OR OTHERWISE, BE LIABLE TO BUYER OR OTHERWISE FOR SPECIAL, INCIDENTAL, DIRECT, PUNITIVE, OR CONSEQUENTIAL DAMAGES, OR FOR DAMAGES IN EXCESS OF ANY AMOUNTS PAID TO NORSTONE & COMPANIES HEREUNDER. NO WAIVER, ALTERATION, ADDITION OR MODIFICATION OF THE FOREGOING CONDITIONS SHALL BE VALID UNLESS MADE IN WRITING AND SIGNED BY AN OFFICER OF COMPANIES.

**Appendix A – Substrate Detail**

Appendix A details proper installation procedures over various substrates in both interior and exterior applications.

Open Stud – cement board – Exterior.....12

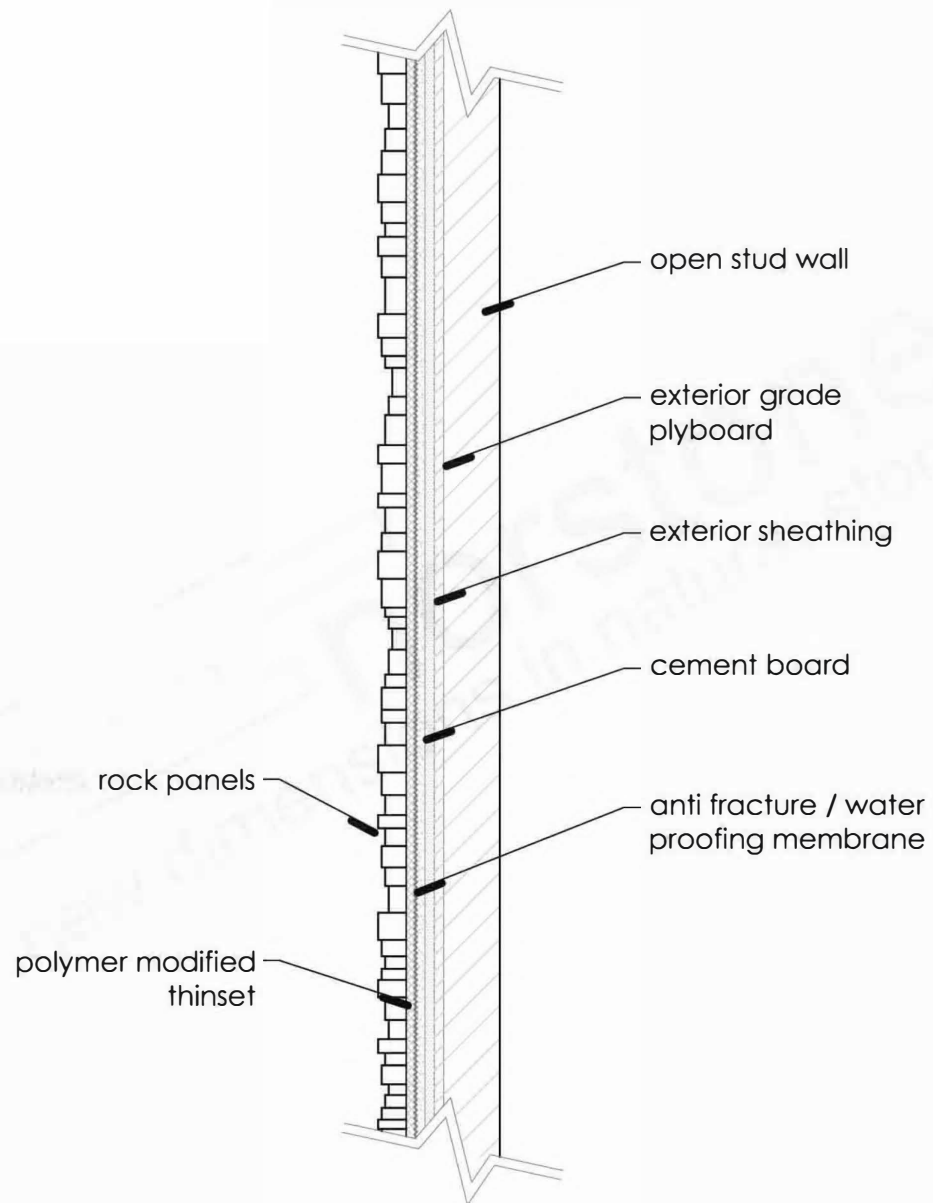
Open Stud – Lathe and Mortar – Exterior.....13

Open Stud – Interior.....14

Concrete.....15

Steel – Epoxy Adhesive.....16

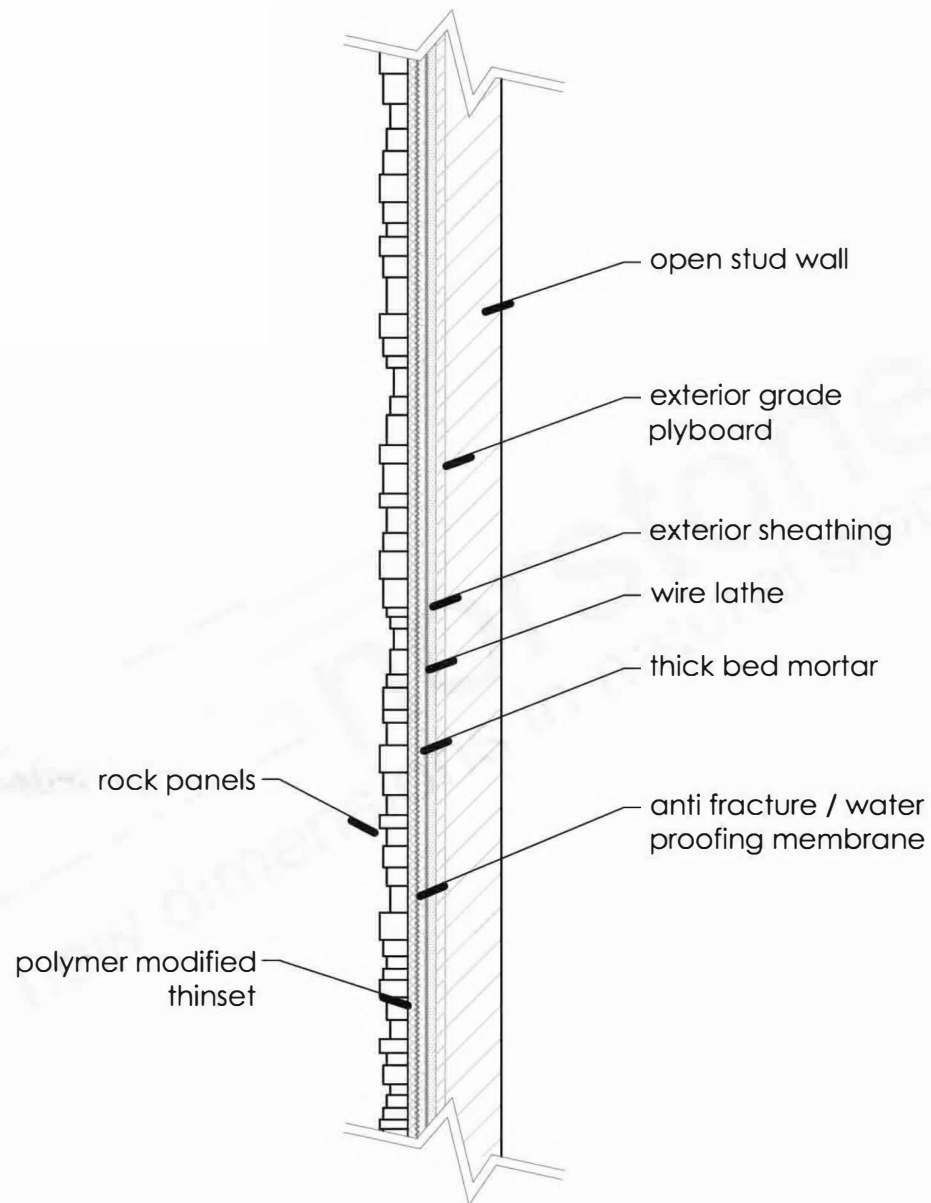
Steel – Lathe and Mortar.....17



**rock panel detail - open stud wall - exterior #1**

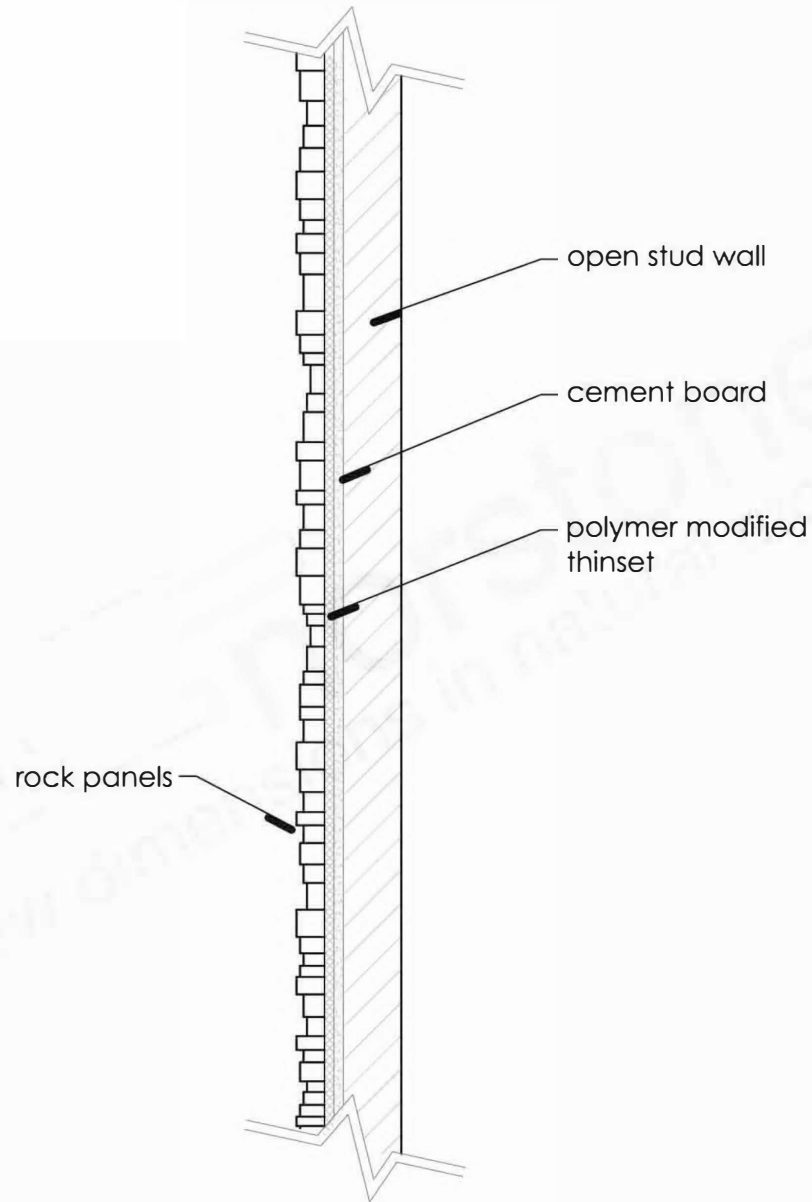
n.f.s.





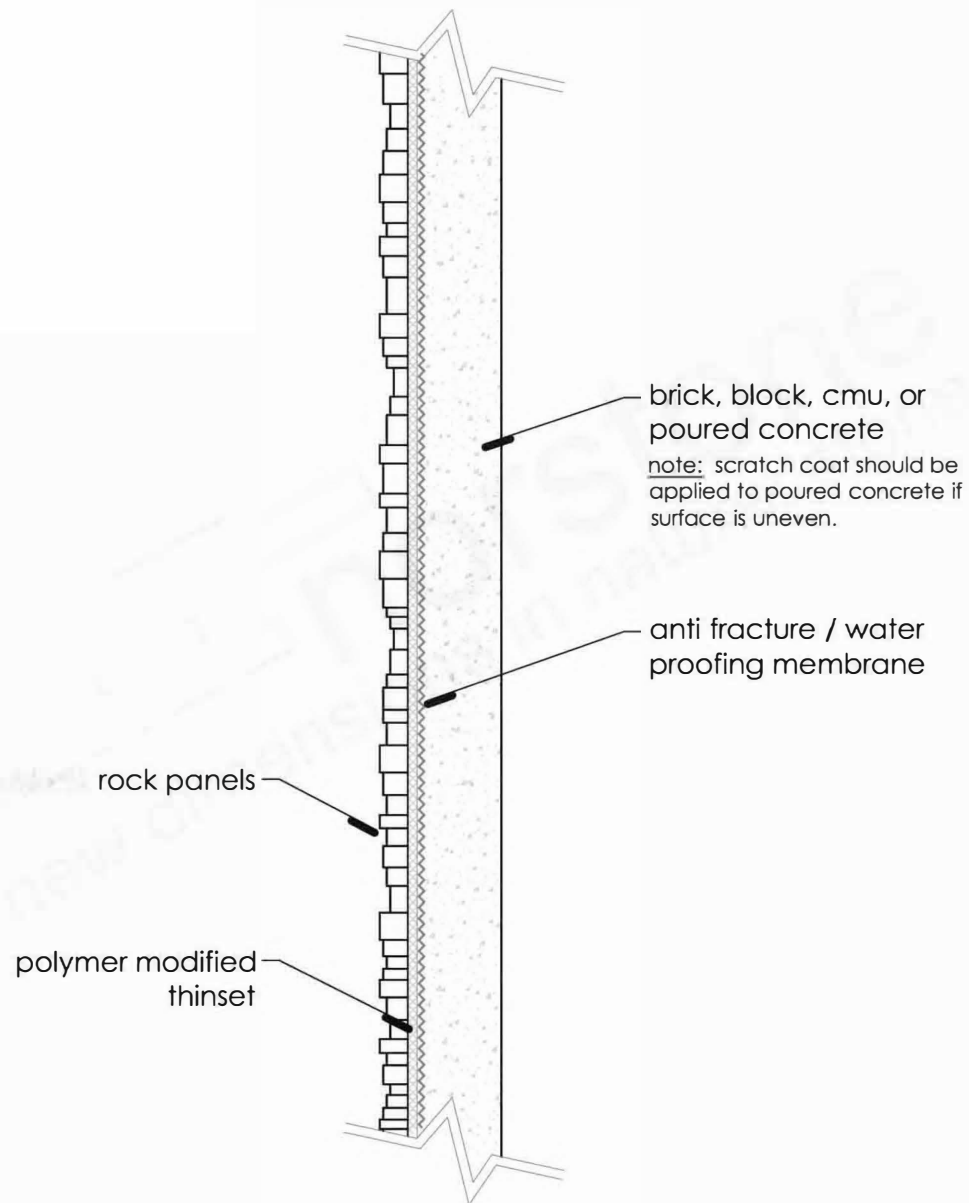
**rock panel detail - open stud wall - exterior #2**

n.t.s.



**rock panel detail - open stud wall - interior**

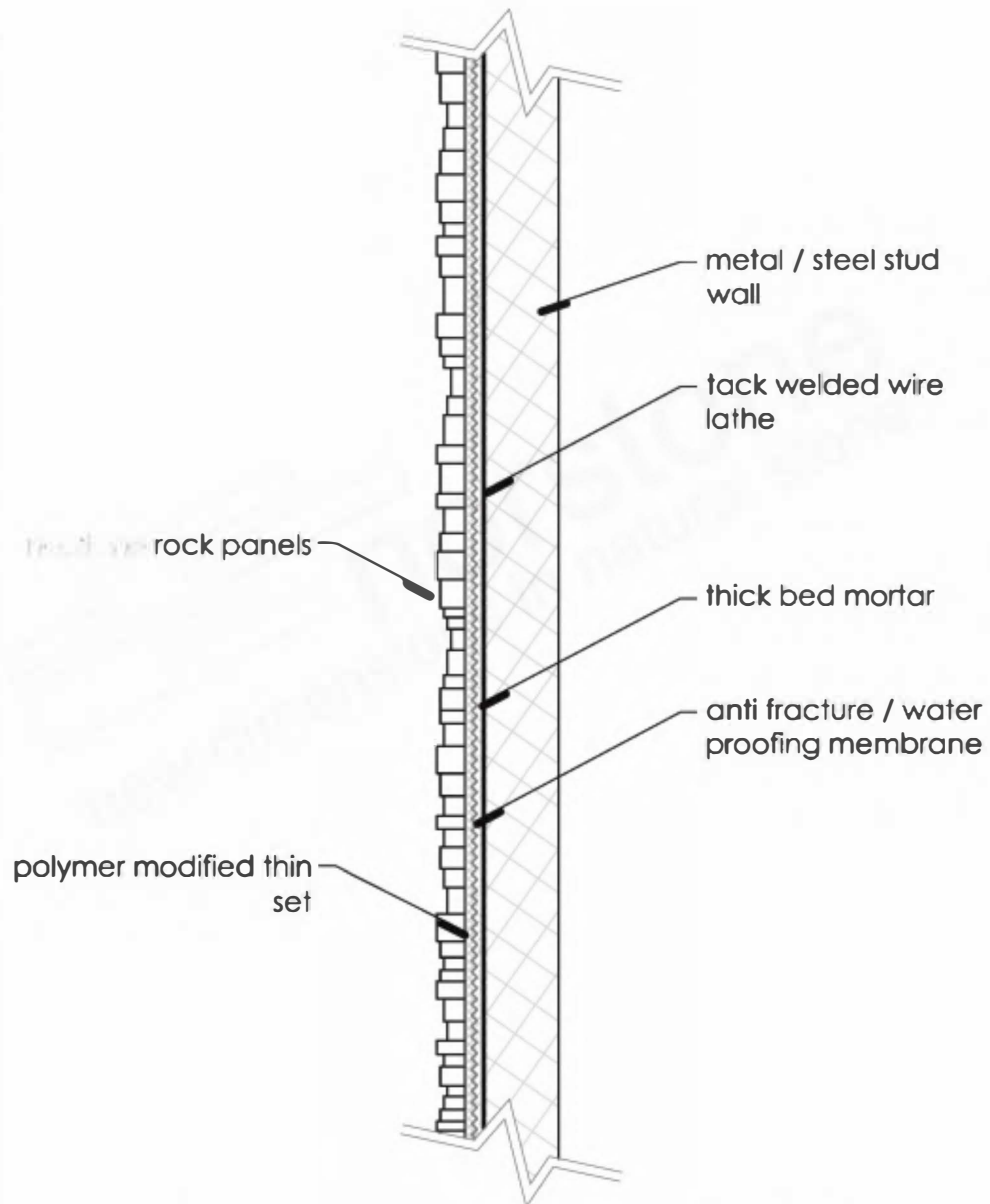
n.t.s.



**rock panel detail - concrete wall - exterior**

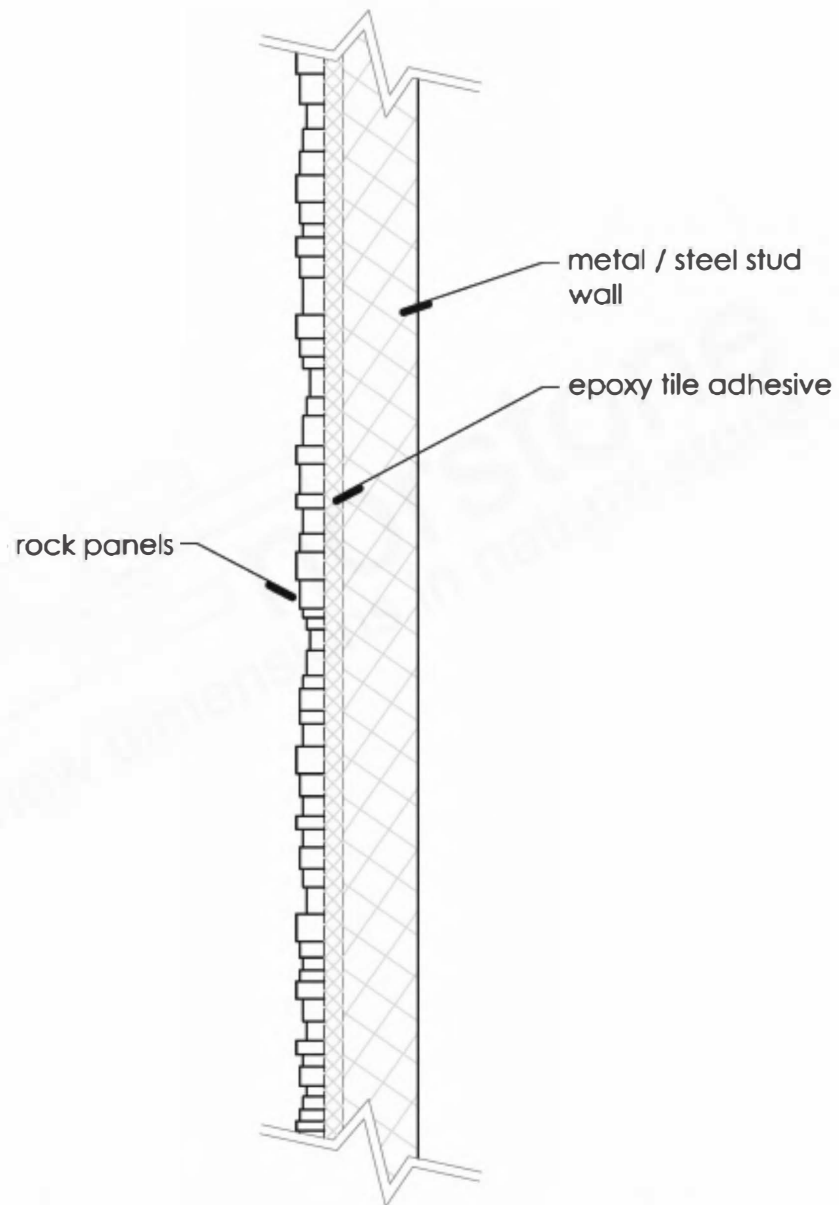
n.t.s.





**rock panel detail - steel #1 - exterior**

n.f.s.



**rock panel detail - steel #2 - exterior**

n.i.s.