

2024

# Fabric Overview UK

ferm  
LIVING



# Made To Order & Customisation Concept

The Customisation Concept serves as an overview of the various textiles and types of leather available for firm LIVING's upholstered furniture. The materials have been handpicked so you can make our furniture your own.

## ONE SIZE DOESN'T FIT ALL

Our homes are distinct, personal spaces that uniquely reflect the people who live there. They say the magic happens in the details, and often, that's what makes us fall in love with a specific piece that we want to move into our home. That is precisely why we have introduced the firm LIVING customisation concept, so that you can tailor selected pieces to fit your specific taste.

With our Made to Order products, you can choose between a wide variety of fabrics and leathers that we have selected among leading textile and leather suppliers, making it possible for you to customise your furniture with an array of materials and colour combinations.

## THE PERFECT FIT

The majority of our sofas and seating collection are included in the customisation concept. Among them are Catena, Rico, Turn, Dase, Buur and family of Herman Chairs.

For our sofas, you can choose between an exciting variety of textiles that range from faded velvet, cottons, linens and wool, available in an array of colours and patterns from premium fabric suppliers that include Kvadrat, Sørensen Leather and Gabriel.

For our Herman Chairs, there are a wide range of options available: customise everything from the frame to the colour of wooden backrest, and choose between various seat fabrics, woods and leathers to form your ideal chair.

To see a complete selection of our Made to Order materials, please refer to the Customisation Concept section of our Product Overview, where you can get an overview of all of the different customisation options that we offer.

We are also happy to upholster furniture using non-standard fabric options and customer's own materials (COM) upon fabric approval. For further information please contact our Sales Representatives.



# FABRIC & LEATHER OPTIONS

	CATENA COLLECTION	RICO COLLECTION	HERMAN COLLECTION	TURN COLLECTION	DASE COLLECTION	BUUR COLLECTION
<i>Price Group 1</i>						
Cotton Linen	•				•	
Soft Bouclé	•	•	•		•	•
Soft FR		•				
<i>Price Group 2</i>						
Linara FR*	•			•		
Rich Velvet		•			•	•
<i>Price Group 3</i>						
Bouclé	•	•	•	•	•	•
Check	•					
Louisiana	•	•				
Nordic Bouclé	•	•			•	•
Pasadena	•			•		
<i>Price Group 4</i>						
Classic Linen	•					
Confetti Bouclé	•	•			•	
Leather - Ultra			•			
Tonus 4*		•	•	•	•	•
Wool Bouclé	•	•				
<i>Price Group 5</i>						
Hallingdal 65	•	•	•	•	•	
Leather - Envy			•			

\* Extra Crib5 FR treatment available, 10% upcharge



# COTTON LINEN

## Composition

60% cotton  
40% linen

---

## Fire rating

CAL117: pass  
EN 1021 1/2: not pass  
BS 5852 0,1 C&M: pass with a  
Crib5 interliner - on request  
BS 5852 Crib5: not pass

---

## Martindale

24.000

---

## Price group

1

---

## Care instructions

Vacuum frequently on medium power.  
Remove wet stains by carefully dabbing with  
a lint-free cloth or sponge wrung in warm  
detergent-free water. If the stain remains,  
we recommend professional dry cleaning.

---

## Colour fastness to light

Scale 1-5 or 1-8; 1 worst and 5 or 8 best  
4 (8)

---

## Pass for

Catena  
Dase  
Turn



Natural



# SOFT BOUCLÉ

## Composition

90% polyester  
5% cotton  
5% polyacrylic

---

## Fire rating

CAL117: pass  
EN 1021 1/2: not tested  
BS 5852 0,1 C&M: pass with treatment  
Crib5: not pass

---

## Martindale

75.000

---

## Price group

1

---

## Care instructions

Vacuum frequently on medium power.  
Remove wet stains by carefully dabbing with a lint-free cloth or sponge wrung in warm detergent-free water. If the stain remains, we recommend professional dry cleaning.

---

## Colour fastness to light

Scale 1-5 or 1-8; 1 worst and 5 or 8 best  
5 (5)

---

## Pass for

Buur  
Catena  
Dase  
Herman  
Rico



Off-White/Sand



Natural



Dark Brown



# SOFT FR

## Composition

95% polyester, 5% polyamide

---

## Fire rating

EN 1021 1/2: not tested  
CAL117: not tested  
BS 5852 0,1 C&M: pass  
BS 5852 Crib5: not pass

---

## Martindale

45.000

---

## Price group

1

---

## Care instructions

Vacuum frequently on medium power.  
Remove wet stains by carefully dabbing with a lint-free cloth or sponge wrung in warm detergent-free water. If the stain remains, we recommend professional dry cleaning.

---

## Colour fastness to light

Scale 1-5 or 1-8; 1 worst and 5 or 8 best  
6 (8)

---

## Pass for

Rico



901 Off-White



904 Sand



805 Grey



# LINARA FR

## By Romo

### Composition

63% cotton  
37% polyester

### Fire rating

EN 1021 1/2: pass  
CAL 117: not pass  
BS 5852 0,1 C&M: Pass  
BS 5852 Crib 5: pass with treatment

### Martindale

36.000

### Price group

2

### Care instructions

Vacuum frequently on medium power.  
Remove wet stains by carefully dabbing with a lint-free cloth. If the stain remains, we recommend professional dry cleaning.

### Colour fastness to light

Scale 1-5 or 1-8; 1 worst and 5 or 8 best  
5-6 (8)

### Pass for

Catena  
Turn

More information [here](#).

### ferm LIVING colour selection (fabric swatches available)



B2494/93

B2494/66

B2494/89

### All available colours





# LINARA FR

## By Romo

### Composition

63% cotton  
37% polyester

### Fire rating

EN 1021 1/2: pass  
CAL 117: not pass  
BS 5852 0,1 C&M: Pass  
BS 5852 Crib 5: pass with treatment

### Martindale

36.000

### Price group

2

### Care instructions

Vacuum frequently on medium power.  
Remove wet stains by carefully dabbing with a lint-free cloth. If the stain remains, we recommend professional dry cleaning.

### Colour fastness to light

Scale 1-5 or 1-8; 1 worst and 5 or 8 best  
5-6 (8)

### Pass for

Catena  
Turn

More information [here](#).





# LINARA FR

## By Romo

### Composition

63% cotton  
37% polyester

### Fire rating

EN 1021 1/2: pass  
CAL 117: not pass  
BS 5852 0,1 C&M: Pass  
BS 5852 Crib 5: pass with treatment

### Martindale

36.000

### Price group

2

### Care instructions

Vacuum frequently on medium power.  
Remove wet stains by carefully dabbing with a lint-free cloth. If the stain remains, we recommend professional dry cleaning.

### Colour fastness to light

Scale 1-5 or 1-8; 1 worst and 5 or 8 best  
5-6 (8)

### Pass for

Catena  
Turn

More information [here](#).





# RICH VELVET

**Composition**  
100% polyester

**Fire rating**  
CAL117: pass  
EN 1021 1/2: pass  
BS 5852 0,1 C&M: pass  
BS 5852 Crib5: not pass

**Martindale**  
170.000

**Price group**  
2

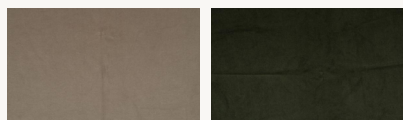
**Care instructions**  
Vacuum frequently on medium power.  
Remove wet stains by carefully dabbing with a lint-free cloth or sponge wrung in warm detergent-free water.

**Colour fastness to light**  
Scale 1-5 or 1-8; 1 worst and 5 or 8 best  
6 (8)

**Pass for**  
Buur  
Dase  
Rico

[More information here.](#)

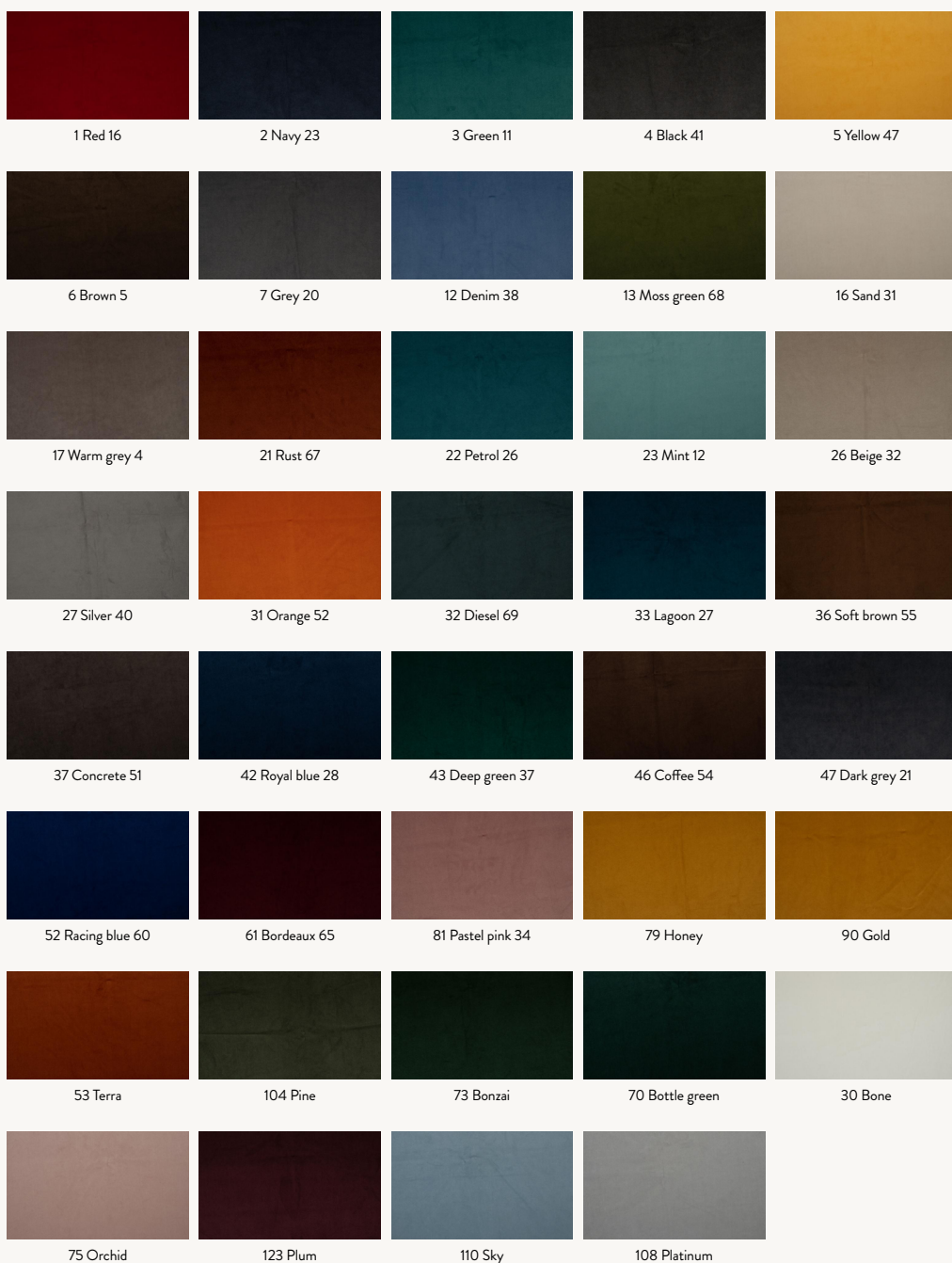
## ferm LIVING colour selection (fabric swatches available)



26 Beige 32

104 Pine

## All available colours



# BOUCLÉ

## Composition

35% acrylic  
24% polyester  
19% viscose  
14% cotton  
5% linen  
3% other fibres

---

## Fire rating

CAL117: pass  
EN 1021 1/2: pass  
BS 5852 0,1 C&M: pass  
BS 5852 Crib5: not pass

---

## Martindale

30.000

---

## Price group

3

---

## Care instructions

Vacuum frequently on medium power.  
Remove wet stains by carefully dabbing with a lint-free cloth or sponge wrung in warm detergent-free water. If the stain remains, we recommend professional dry cleaning.

---

## Colour fastness to light

Scale 1-5 or 1-8; 1 worst and 5 or 8 best  
4-5 (8)

---

## Pass for

Buur  
Catena  
Dase  
Herman  
Rico  
Turn



Off-White



Sand



# CHECK

## Composition

30% wool, 20% acrylic, 15% cotton, 15% polyester, 10% linen, 10% viscose

---

## Fire rating

CAL117: pass  
EN 1021 1/2: pass  
BS 5852 0,1 C&M: pass  
BS 5852 Crib5: not pass

---

## Martindale

28.000

---

## Price group

3

---

## Care instructions

Vacuum frequently on medium power.  
Remove wet stains by carefully dabbing with a lint-free cloth or sponge wrung in warm detergent-free water. If the stain remains, we recommend professional dry cleaning.

---

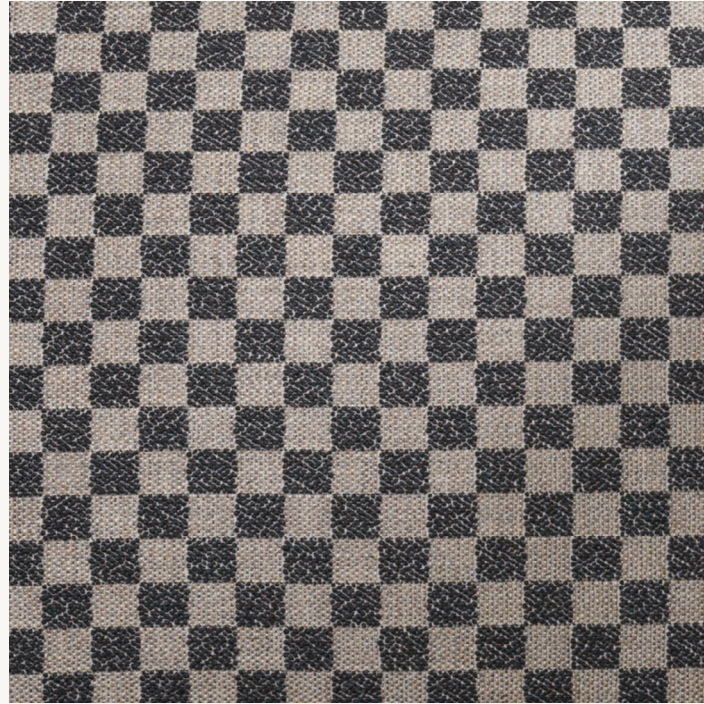
## Colour fastness to light

Scale 1-5 or 1-8; 1 worst and 5 or 8 best  
4-5 (8)

---

## Pass for

Catena



Sand/Black

# LOUISIANA

## Composition

20% wool  
20% viscose  
15% linen  
15% cotton  
15% polyester  
15% acrylic

---

## Fire rating

CAL117: pass  
EN 1021 1/2: pass with treatment  
BS 5852 0.1 C&M: pass with treatment  
BS 5852 Crib5: not pass

---

## Martindale

30.000

---

## Price group

3

---

## Care instructions

Vacuum frequently on medium power. Remove wet stains by carefully dabbing with a lint-free cloth or sponge wrung in warm detergent-free water. If the stain remains, we recommend professional dry cleaning.

---

## Colour fastness to light

Scale 1-5 or 1-8; 1 worst and 5 or 8 best  
5 (8)

---

## Pass for

Catena  
Buur  
Rico (not available for Rico Sofa Curve)



Sand/Black



# NORDIC BOUCLÉ

## Composition

30% wool  
30% cotton  
30% acrylic  
5% polyester  
5% other fibers

---

## Fire rating

CAL117: pass  
EN 1021 1/2: not tested  
BS 5852 0,1 C&M: pass with treatment  
Crib5: not pass

---

## Martindale

25.000

---

## Price group

3

---

## Care instructions

Remove wet stains by carefully dabbing with a lint-free cloth or sponge wrung in warm detergent-free water. If the stain remains, we recommend professional dry cleaning.

---

## Colour fastness to light

Scale 1-5 or 1-8; 1 worst and 5 or 8 best  
4 (8)

---

## Pass for

Buur  
Catena  
Dase  
Rico



Off-white

# PASADENA

## Composition

34% linen  
27% viscose  
17% polyester  
12% cotton  
8% wool  
2% acrylic

---

## Fire rating

CAL117: pass  
EN 1021 1/2: pass with treatment  
BS 5852 0,1 C&M: pass with treatment  
BS 5852 Crib5: not pass

---

## Martindale

30.000

---

## Price group

3

---

## Care instructions

Vacuum frequently on medium power.  
Remove wet stains by carefully dabbing with a lint-free cloth or sponge wrung in warm detergent-free water. If the stain remains, we recommend professional dry cleaning.

---

## Colour fastness to light

Scale 1-5 or 1-8; 1 worst and 5 or 8 best  
5 (8)

---

## Pass for

Catena  
Turn



Sand/Black



# CLASSIS LINEN

## Composition

100% Linen

---

## Fire rating

EN 1021 1/2: pass  
CAL117: pass  
BS 5852 0, 1 C&M: pass  
BS 5852 Crib5: not pass

---

## Martindale

25.000

---

## Price group

4

---

## Care instructions

Vacuum frequently on medium power.  
Remove wet stains by carefully dabbing with a lint-free cloth or sponge wrung in warm detergent-free water. If the stain remains, we recommend professional dry cleaning.

---

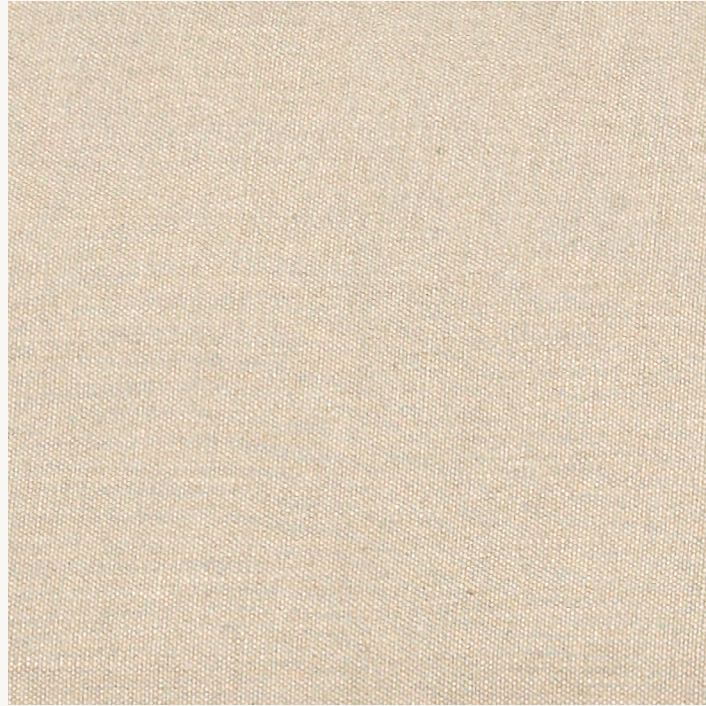
## Colour fastness to light

Scale 1-5 or 1-8; 1 worst and 5 or 8 best  
4 (5)

---

## Pass for

Catena



Natural

# CONFETTI BOUCLÉ

## Composition

40% cotton, 22% acrylic, 16% viscose,  
11% wool, 11% polyester

---

## Fire rating

CAL117: pass  
EN 1021 1/2: pass  
BS 5852 0,1 C&M: pass  
BS 5852 Crib5: not pass

---

## Martindale

100.000

---

## Price group

4

---

## Care instructions

Vacuum frequently on medium power.  
Remove wet stains by carefully dabbing with  
a lint-free cloth or sponge wrung in warm  
detergent-free water. If the stain remains,  
we recommend professional dry cleaning.

---

## Colour fastness to light Scale 5 (8)

---

## Pass for

Catena  
Dase  
Rico



Light Grey



# ULTRA LEATHER

By Sørensen Leather

## Composition

100% protected leather

## Fire rating

CAL117: pass  
EN 1021 1/2: pass  
BS 5852 0,1 C&M: pass  
BS 5852 Crib5: pass with treatment

## Price group

4

## Care instructions

Vacuum frequently with a soft brush. For stains use boiled water with natural soap. Whip 2-3 tablespoons of soap flakes in 1 litre water and only use the foam. Apply the foam with a soft cloth, let it dry and wipe off the leather thoroughly with a soft cotton cloth.

## Colour fastness to light

Scale 5-7 (8)

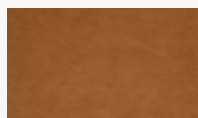
≥ 5 (8)

## Pass for

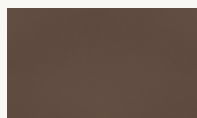
Herman

More information [here](#).

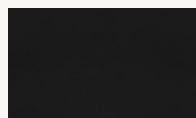
## ferm LIVING colour selection (fabric swatches available)



Brandy - 41574

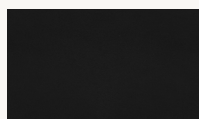


Safari - 41586



Black - 41599

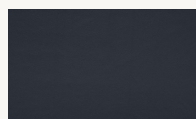
## All available colours



Black - 41599



Black Brown - 41590



Navy - 41573



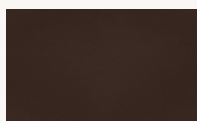
Anthrazite - 41580



Lava - 41575



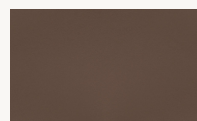
Chocolate - 41589



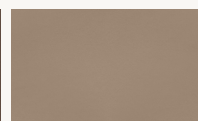
Brown - 41588



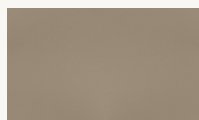
Grey - 41585



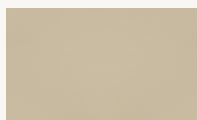
Safari - 41586



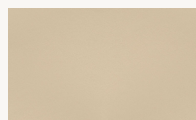
Earth - 41584



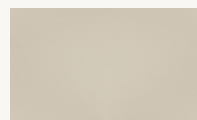
Altweiss - 41576



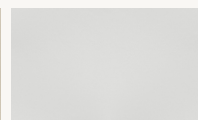
Marble - 41583



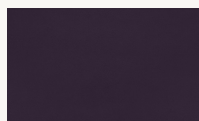
Sand - 41582



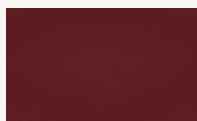
Eggshell - 41581



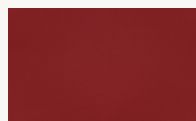
White - 41594



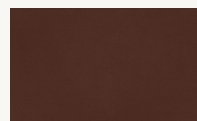
Purple - 41593



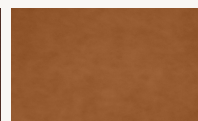
Brick - 41579



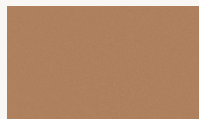
Poppy - 41578



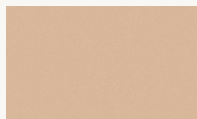
Cognac - 41598



Brandy - 41574



Camel - 41571



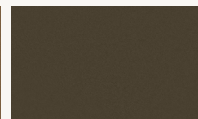
Honey - 41572



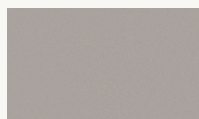
Leaf - 41566



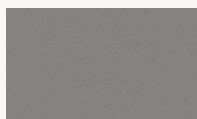
Marsh - 41570



Moss - 41569



Oat - 41568



Smoke - 41567

# TONUS 4

By Kvadrat

**Composition**  
90% new wool  
10% helanca

**Sustainability**  
EU Ecolabel  
Greenguard Gold

**Fire rating**  
CAL117: pass  
EN 1021 1/2: pass  
BS 5852 0,1 C&M: pass  
BS 5852 Crib5: pass with treatment

**Martindale**  
100.000

**Price group**  
4

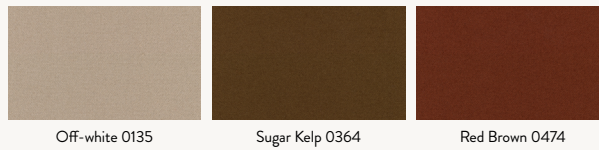
**Care instructions**  
Vacuum frequently on medium power.  
Remove wet stains by carefully dabbing with a lint-free cloth or sponge wrung in warm detergent-free water. If the stain remains, we recommend professional dry cleaning.

**Colour fastness to light**  
Scale 1-5 or 1-8; 1 worst and 5 or 8 best  
5-7 (8)

**Pass for**  
Buur  
Dase  
Herman  
Rico  
Turn

More information [here](#).

## ferm LIVING colour selection (fabric swatches available)



## All available colours





# WOOL BOUCLÉ

## Composition

32% cotton, 61% wool and 7% nylon

---

## Fire rating

CAL117: pass  
EN 1021 1/2: pass  
BS 5852 0,1 C&M: pass  
BS 5852 Crib5: not pass

---

## Martindale

25.000

---

## Price group

4

---

## Care instructions

Vacuum frequently on medium power.  
Remove wet stains by carefully dabbing with a lint-free cloth or sponge wrung in warm detergent-free water. If the stain remains, we recommend professional dry cleaning.

---

## Colour fastness to light

Scale 1-5 or 1-8; 1 worst and 5 or 8 best  
4 (5)

---

## Pass for

Catena  
Rico



Off-white



Natural



Sugar Kelp

# HALLINGDAL 65

By Kvadrat

## Composition

70% new wool  
30% viscose

## Sustainability

EU Ecolabel  
Greenguard Gold

## Fire rating

CAL117: pass  
EN 1021 1/2: pass  
BS 5852 0,1 C&M: pass  
BS 5852 Crib5: pass

## Martindale

100.000

## Price group

5

## Care instructions

Vacuum frequently on medium power.  
Remove wet stains by carefully dabbing with a lint-free cloth or sponge wrung in warm detergent-free water. If the stain remains, we recommend professional dry cleaning.

## Colour fastness to light

Scale 1-5 or 1-8; 1 worst and 5 or 8 best  
5-7 (8)

## Pass for

Catena  
Dase  
Herman  
Rico  
Turn

[More information here.](#)

## ferm LIVING colour selection (fabric swatches available)



## All available colours





# LEATHER - ENVY

By Sørensen Leather

## Composition

100% aniline leather

## Fire rating

CAL117: pass  
EN 1021 1/2: pass  
BS 5852 0,1 C&M: not tested  
BS 5852 Crib5: not pass

## Price group

5

## Care instructions

Vacuum frequently with a soft brush. For stains use boiled water with natural soap. Whip 2-3 tablespoons of soap flakes in 1 litre water and only use the foam. Apply the foam with a soft cloth, let it dry and wipe off the leather thoroughly with a soft cotton cloth.

## Colour fastness to light Scale 3 (8)

Pass for  
Herman

More information [here](#).

## ferm LIVING colour selection (fabric swatches available)



Olive - 20324

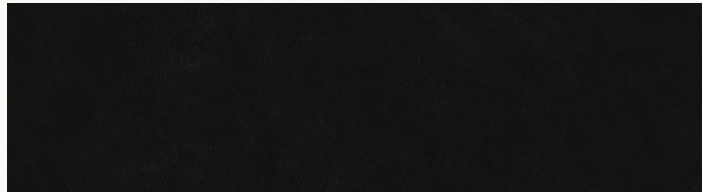


Cognac - 20320



Black - 20321

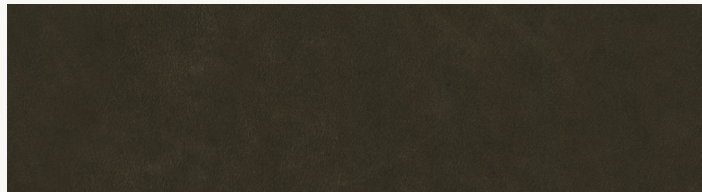
## All available colours



Black - 20321



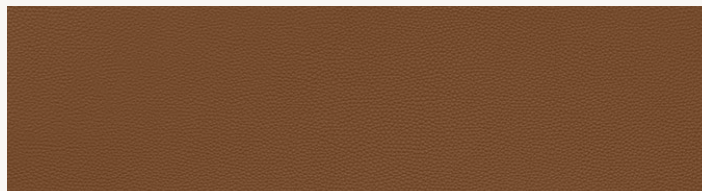
Anthrazite - 20323



Olive - 20324



Nougat - 20322



Cognac - 20320

For more information please contact your  
firm LIVING sales contact

**Space to feel comfortably you**