

Fabric & Leather Overview

Spring Summer 2026 UK & Ireland



FERM
LIVING

Made To Order & Customisation Concept

The Customisation Concept serves as an overview of the various textiles and types of leather available for Ferm Living's upholstered furniture. The materials have been handpicked so you can make our furniture your own.

One size doesn't fit all

Our homes are distinct, personal spaces that uniquely reflect the people who live there. They say the magic happens in the details, and often, that's what makes us fall in love with a specific piece that we want to move into our home. That is precisely why we have introduced the Ferm Living customisation concept, so that you can tailor selected pieces to fit your specific taste.

With our Made to Order products, you can choose between a wide variety of fabrics and leathers that we have selected among leading textile and leather suppliers, making it possible for you to customise your furniture with an array of materials and colour combinations.

The perfect fit

The majority of our sofas and seating collection are included in the customisation concept. Among them are Catena, Rico, Turn, Dase, Buur and family of Herman Chairs.

For our sofas, you can choose between an exciting variety of textiles that range from faded velvet, cottons, linens and wool, available in an array of colours and patterns from premium fabric and leather suppliers that include Kvadrat, Skandilock, Sørensen Leather and Gabriel.

For our Herman Chairs, there are a wide range of options available: customise everything from the frame to the colour of wooden backrest, and choose between various seat fabrics, woods and leathers to form your ideal chair.

To see a complete selection of our Made to Order materials, please refer to the Customisation Concept section of our Product Overview, where you can get an overview of all of the different customisation options that we offer.

We are also happy to upholster furniture using non-standard fabric options and customers' own materials (COM), subject to fabric approval and a minimum order quantity. For further information, please contact our Sales Representatives.

Fabric and Leather options

	Catena Collection	Rico Collection	Herman Collection	Turn Collection	Dase Collection	Buur Collection	Orbo Lounge Chair
Price Group 1							
Cotton Linen by Ferm Living	•				•		
Soft Bouclé by Ferm Living	•	•	•		•	•	•
Autumn by Kvadrat****		•					
Price Group 2							
Linará FR**** by Romo	•			•			
Main Line Flax*** by Camira		•	•		•		•
Rich Velvet by Nevotex	•	•			•	•	•
Drape by Ferm Living	•						
Price Group 3							
Bouclé by Ferm Living	•	•	•	•	•	•	•
Check by Ferm Living	•						
Louisiana by Ferm Living ****	•	•				•	
Nordic Bouclé by Ferm Living	•	•			•	•	•
Pasadena by Ferm Living	•			•			
Raw Bouclé by Ferm Living		•				•	•
Can Lis by Ferm Living	•	•					
Devoré Velvet by Ferm Living*		•				•	
Cilla by Ferm Living		•					
Price Group 4							
Leather - Ultra**** by Sørensen Leather			•				
Tonus 4**** by Kvadrat		•	•	•	•	•	•
Price Group 5							
Hallingdal 65*** by Kvadrat	•	•	•	•	•		•
Leather - Envy by Sørensen Leather			•				
Price Group 6**							
Sheepskin*** by Skandilock		•				•	

* Only available for selected Rico Series products

** Only available for Buur Lounge Chair, Rico Lounge Chair, Rico Lounge Chair Piccolo and Rico Pouf

*** Inherently Crib 5 compliant and therefore do not require treatment or incur any surcharge

**** Extra Crib5 FR treatment available, 10% upcharge

Cotton Linen

By Ferm Living

Composition

60% cotton
40% linen

Fire rating

CAL117: not pass
EN 1021 1/2: not pass
BS 5852 0,1 C&M: pass with a
Crib5 interliner - on request
BS 5852 Crib5: not pass

Martindale

24.000

Price group

1

Care instructions

Vacuum frequently on medium power.
Remove wet stains by carefully dab-
bing with a lint-free cloth or sponge
wrung in warm detergent-free water.
If the stain remains, we recommend
professional dry cleaning.

Colour fastness to light

4 (8)

Pilling

4-5 (5)

Pass for

Catena
Dase



Natural

Soft Bouclé

By Ferm Living

Composition

90% polyester
5% cotton
5% polyacrylic

Fire rating

CAL117: pass
EN 1021 1/2: pass with treatment
BS 5852 0,1 C&M: pass with treatment
Crib5: not pass

Martindale

75.000

Price group

1

Care instructions

Vacuum frequently on medium power.
Remove wet stains by carefully dabbing with a lint-free cloth or sponge wrung in warm detergent-free water. If the stain remains, we recommend professional dry cleaning.

Colour fastness to light

5 (8)

Pilling

4 (5)

Pass for

Buur
Catena
Dase
Herman
Rico



Off-White/Sand



Natural



Dark Brown

Autumn

By Kvadrat

Composition
100% recycled polyester

Sustainability
EU Ecolabel
Greenguard Gold

Fire rating
CA117: pass
EN 1021 1/2: pass
BS 5852 0,1 C&M: pass with treatment
Crib5: pass with treatment

Martindale
50.000

Price group
1

Care instructions
Vacuum frequently on medium power.
Remove wet stains by carefully dabbing with a lint-free cloth or sponge wrung in warm detergent-free water. If the stain remains, we recommend professional dry cleaning.

Colour fastness to light
7 (8)

Pilling
4 (5)

Pass for
Rico

More information [here](#).

Ferm Living colour selection (fabric swatches available)



0361

All available colours



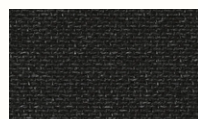
0101



0131



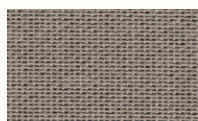
0171



0191



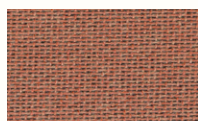
0221



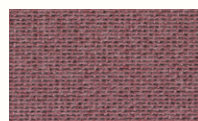
0331



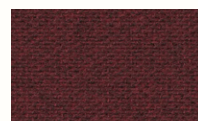
0361



0551



0651



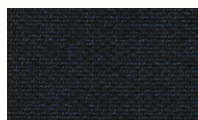
0681



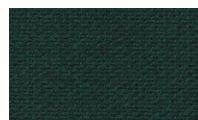
0751



0771



0791



0971

Linara FR

By Romo

Composition
63% cotton
37% polyester

Fire rating
EN 1021 1/2: pass
CAL 117: not pass
BS 5852 0, 1 C&M: Pass
BS 5852 Crib 5: pass with treatment

Martindale
36.000

Price group
2

Care instructions
Vacuum frequently on medium power.
Remove wet stains by carefully dabbing with a lint-free cloth. If the stain remains, we recommend professional dry cleaning.

Colour fastness to light
5-6 (8)

Pass for
Catena
Turn

More information [here](#).

Ferm Living colour selection (fabric swatches available)



B2494/93

B2494/66

B2494/89

All available colours



Linara FR

By Romo

Composition
63% cotton
37% polyester

Fire rating
EN 1021 1/2: pass
CAL 117: not pass
BS 5852 0, 1 C&M: Pass
BS 5852 Crib 5: pass with treatment

Martindale
36.000

Price group
2

Care instructions
Vacuum frequently on medium power.
Remove wet stains by carefully dabbing with a lint-free cloth. If the stain remains, we recommend professional dry cleaning.

Colour fastness to light
5-6 (8)

Pass for
Catena
Turn

More information [here](#).



Linara FR

By Romo

Composition
63% cotton
37% polyester

Fire rating
EN 1021 1/2: pass
CAL 117: not pass
BS 5852 0, 1 C&M: Pass
BS 5852 Crib 5: pass with treatment

Martindale
36.000

Price group
2

Care instructions
Vacuum frequently on medium power.
Remove wet stains by carefully dab-
bing with a lint-free cloth. If the stain
remains, we recommend professional
dry cleaning.

Colour fastness to light
5-6 (8)

Pass for
Catena
Turn

More information [here](#).



Linara FR

By Romo

Composition
63% cotton
37% polyester

Fire rating
EN 1021 1/2: pass
CAL 117: not pass
BS 5852 0, 1 C&M: Pass
BS 5852 Crib 5: pass with treatment

Martindale
36.000

Price group
2

Care instructions
Vacuum frequently on medium power.
Remove wet stains by carefully dabbing with a lint-free cloth. If the stain remains, we recommend professional dry cleaning.

Colour fastness to light
5-6 (8)

Pass for
Catena
Turn

More information [here](#).



Main Line Flax

By Camira

Composition
75% virgin wool
25% flax

Fire rating
CAL117: pass
EN 1021 1/2: pass,
BS 5852 0,1 C&M: pass
Crib5: pass

Martindale
50.000

Price group
2

Care instructions
Vacuum frequently on medium power.
Remove wet stains by carefully dabbing with a lint-free cloth or sponge wrung in warm detergent-free water. If the stain remains, we recommend professional dry cleaning.

Colour fastness to light
4-5 (8)

Pilling
4 (5)

Pass for
Rico
Herman
Dase

More information [here](#).

Ferm Living colour selection (fabric swatches available)

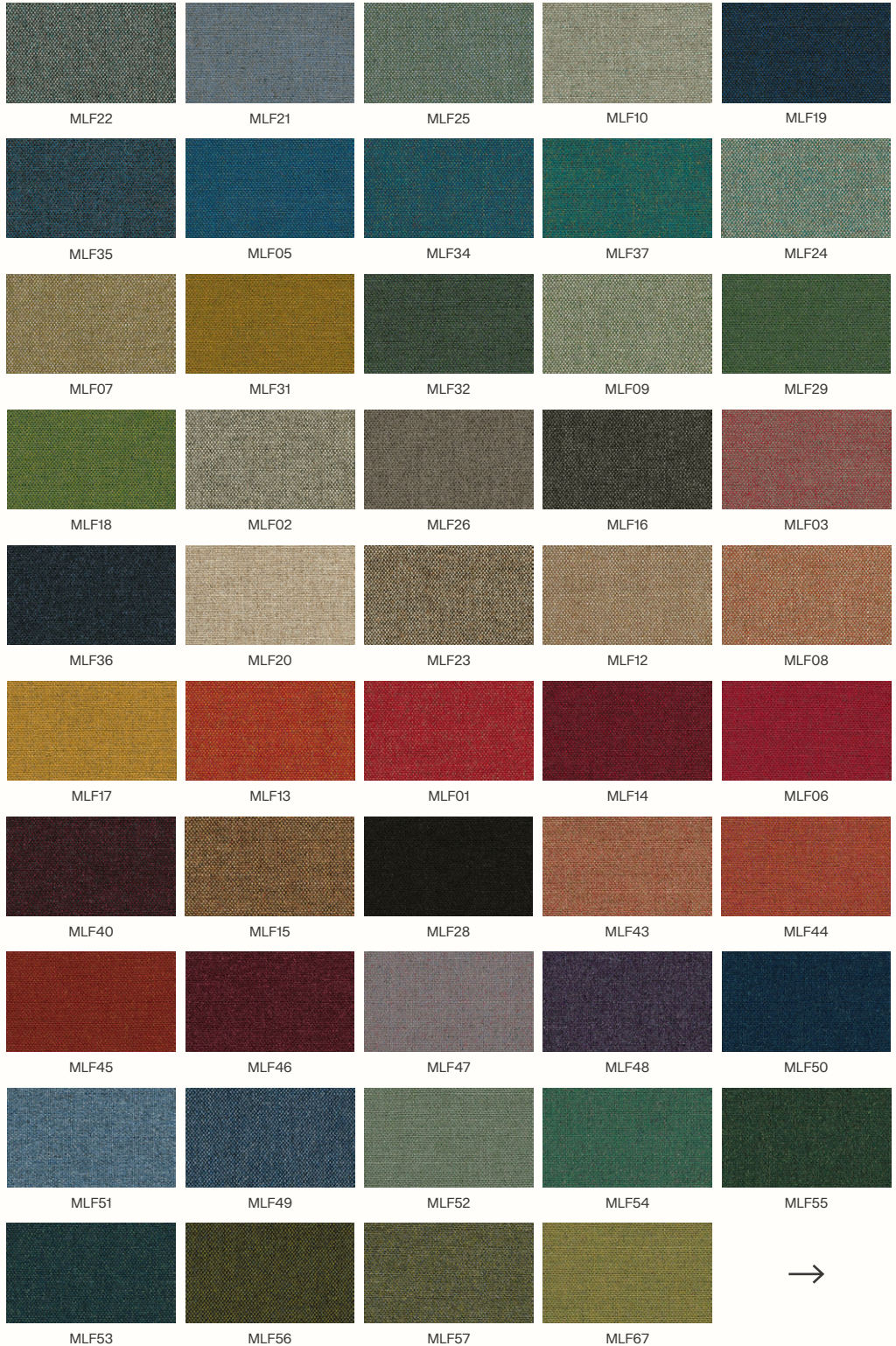


Sand MLF20

Navy MLF63

Coffee MLF23

All available colours



MLF22

MLF21

MLF25

MLF10

MLF19

MLF35

MLF05

MLF34

MLF37

MLF24

MLF07

MLF31

MLF32

MLF09

MLF29

MLF18

MLF02

MLF26

MLF16

MLF03

MLF36

MLF20

MLF23

MLF12

MLF08

MLF17

MLF13

MLF01

MLF14

MLF06

MLF40

MLF15

MLF28

MLF43

MLF44

MLF45

MLF46

MLF47

MLF48

MLF50

MLF51

MLF49

MLF52

MLF54

MLF55

MLF53

MLF56

MLF57

MLF67



Main Line Flax

By Camira

Composition
75% virgin wool
25% flax

Fire rating
CAL117: pass
EN 1021 1/2: pass,
BS 5852 0,1 C&M: pass
Crib5: pass

Martindale
50.000

Price group
2

Care instructions
Vacuum frequently on medium power.
Remove wet stains by carefully dab-
bing with a lint-free cloth or sponge
wrung in warm detergent-free water.
If the stain remains, we recommend
professional dry cleaning.

Colour fastness to light
4-5 (8)

Pilling
4 (5)

Pass for
Rico
Herman
Dase

More information [here](#).



Rich Velvet

By Nevotex

Composition
100% polyester

Fire rating
CAL117: pass
EN 1021 1/2: pass
BS 5852 0,1 C&M: pass with treatment
BS 5852 Crib5: not pass

Martindale
170.000

Price group
2

Care instructions
Vacuum frequently on medium power.
Remove wet stains by carefully dabbing with a lint-free cloth or sponge wrung in warm detergent-free water.

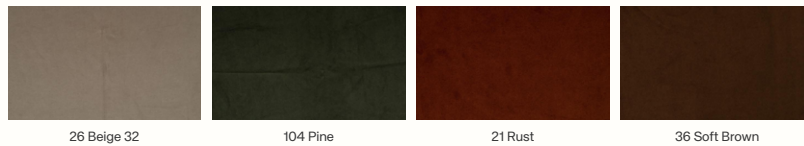
Colour fastness to light
6 (8)

Pilling
4-5 (5)

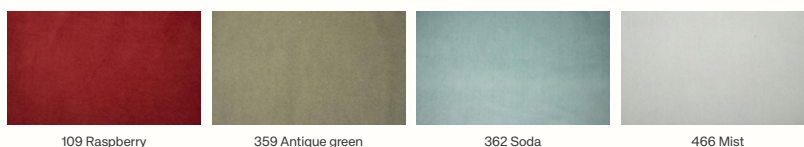
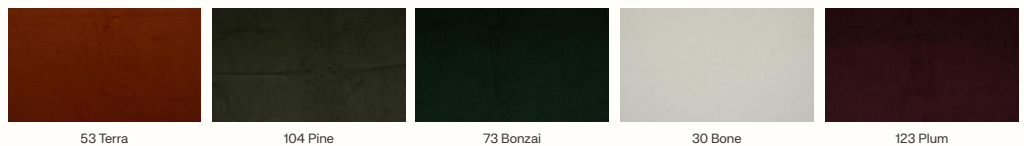
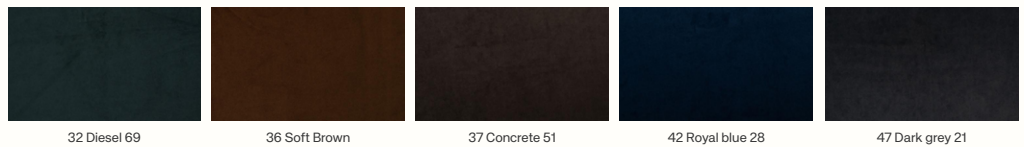
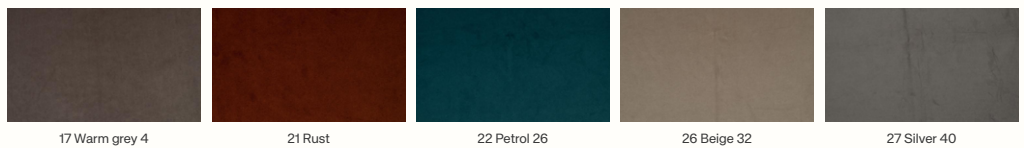
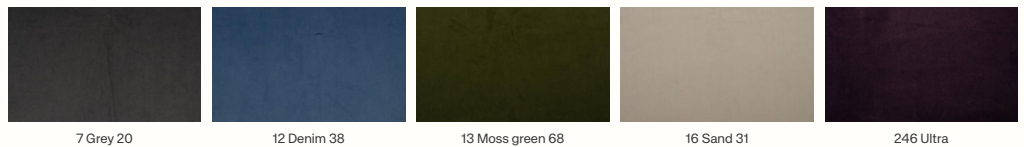
Pass for
Buur
Dase
Rico
Catena

More information under Megan+ [here](#).

Ferm Living colour selection (fabric swatches available)



All available colours



Drape

By Ferm Living

Composition

55% linen
45% jute

Fire rating

CAL117: pass
EN 1021 1/2: pass
BS 5852 0,1 C&M: pass
Crib5: not pass

Martindale

≥ 20.000

Price group

2

Care instructions

Vacuum frequently on medium power.
Remove wet stains by carefully dabbing with a lint-free cloth or sponge wrung in warm detergent-free water. If the stain remains, we recommend professional dry cleaning.

Colour fastness to light

4 (8)

Pilling

≥ 4 (5)

Pass for

Catena - Loose Cover



Natural

Bouclé

By Ferm Living

Composition

35% acrylic
24% polyester
19% viscose
14% cotton
5% linen
3% other fibres

Fire rating

CAL117: pass
EN 1021 1/2: pass
BS 5852 0,1 C&M: pass
BS 5852 Crib5: not pass

Martindale

30.000

Price group

3

Care instructions

Vacuum frequently on medium power.
Remove wet stains by carefully dabbing with a lint-free cloth or sponge wrung in warm detergent-free water. If the stain remains, we recommend professional dry cleaning.

Colour fastness to light

4-5 (8)

Pilling

4 (5)

Pass for

Buur
Catena
Dase
Herman
Rico
Turn



Off-White



Sand

Check

By Ferm Living

Composition

30% wool
20% acrylic
15% cotton
15% polyester
10% linen
10% viscose

Fire rating

CAL117: pass
EN 1021 1/2: pass
BS 5852 0,1 C&M: pass
BS 5852 Crib5: not pass

Martindale

28.000

Price group

3

Care instructions

Vacuum frequently on medium power.
Remove wet stains by carefully dabbing with a lint-free cloth or sponge wrung in warm detergent-free water. If the stain remains, we recommend professional dry cleaning.

Colour fastness to light

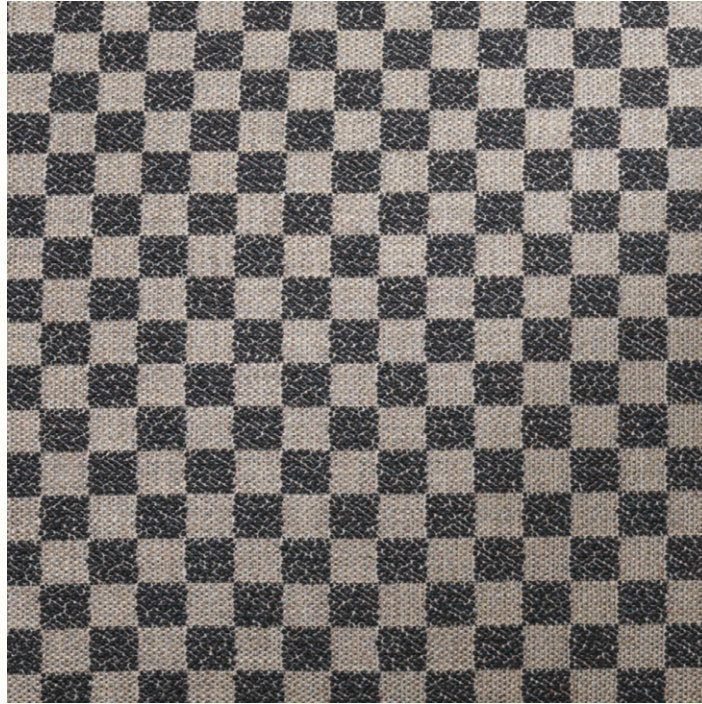
4-5 (8)

Pilling

4 (5)

Pass for

Catena



Sand/Black

Louisiana

By Ferm Living

Composition

Sand/Black

20% wool, 20% viscose

15% linen, 15% cotton

15% polyester, 15% acrylic

Sand/Off-white & Sand/Chocolate

24% viscose, 22% linen

18% polyester, 13% wool

13% cotton, 10% acrylic

Fire rating

CAL117: pass

EN 1021 1/2: pass with treatment

BS 5852 0.1 C&M: pass with treatment

BS 5852 Crib5: pass with treatment -
against MOQ

Martindale

30.000

Price group

3

Care instructions

Vacuum frequently on medium power.
Remove wet stains by carefully dab-
bing with a lint-free cloth or sponge
wrung in warm detergent-free water.
If the stain remains, we recommend
professional dry cleaning.

Colour fastness to light

5 (8)

Pilling

3/4 (5)

Pass for

Catena

Buur

Rico (not available for Rico Sofa Curve
and Rico modular sofa collection)



Sand/Black



Sand/Off-white



Sand/Chocolate

Nordic Bouclé

By Ferm Living

Composition

30% wool
30% cotton
30% acrylic
5% polyester
5% other fibers

Fire rating

CAL117: pass
EN 1021 1/2: not tested
BS 5852 0,1 C&M: pass with treatment
Crib5: not pass

Martindale

25.000

Price group

3

Care instructions

Remove wet stains by carefully dabbing with a lint-free cloth or sponge wrung in warm detergent-free water. If the stain remains, we recommend professional dry cleaning.

Colour fastness to light

4 (8)

Pilling

3-4 (5)

Pass for

Buur
Catena
Dase
Rico



Off-white

Raw Bouclé

By Ferm Living

Composition

40% wool
36% cotton
17% linen
7% polyester

Fire rating

BS 5852 0,1: pass
CAL117: pass
Crib 5: not pass
EN 1021 1/2: pass

Martindale

>40.000

Price group

3

Care instructions

Vacuum frequently on medium power.
Remove wet stains by carefully dabbing with a lint-free cloth or sponge wrung in warm detergent-free water. If the stain remains, professional dry cleaning is recommended.

Colour fastness to light

5 (8)

Pilling

4 (5)

Pass for

Rico
Buur
Orbo



Natural



Tan

Pasadena

By Ferm Living

Composition

34% linen
27% viscose
17% polyester
12% cotton
8% wool
2% acrylic

Fire rating

CAL117: pass
EN 1021 1/2: pass with treatment
BS 5852 0,1 C&M: pass with treatment
BS 5852 Crib5: not pass

Martindale

30.000

Price group

3

Care instructions

Vacuum frequently on medium power.
Remove wet stains by carefully dabbing with a lint-free cloth or sponge wrung in warm detergent-free water. If the stain remains, we recommend professional dry cleaning.

Colour fastness to light

5 (8)

Pilling

4 (5)

Pass for

Catena
Turn



Sand/Black

Can Lis

By Ferm Living

Composition

28% viscose
21% wool
21% acrylic
14% polyester
12% linen
4% cotton

Fire rating

CAL117: pass
EN 1021 1/2: pass with treatment
BS 5852 0,1 C&M: pass with treatment
Crib5: not pass

Martindale

35.000

Price group

3

Care instructions

Vacuum frequently on medium power.
Remove wet stains by carefully dabbing with a lint-free cloth or sponge wrung in warm detergent-free water. If the stain remains, we recommend professional dry cleaning.

Colour fastness to light

5 (8)

Pilling

4 (5)

Pass for

Catena
Rico



Sand/Off-white

Devoré Velvet

By Ferm Living

Composition
100% cotton

Fire rating
CA117: pass
EN 1021 1/2: pass with treatment
- against MOQ
BS 5852 0,1 C&M: pass with treatment
- against MOQ
Crib5: not pass

Martindale
>50.000

Price group
3

Care instructions
Vacuum frequently on medium power.
Remove wet stains by carefully dabbing with a lint-free cloth or sponge wrung in warm detergent-free water. If the stain remains, we recommend professional dry cleaning.

Colour fastness to light
4-5 (8)

Pilling
4 (5)

Pass for
Rico (only available for selected products)
Buur



Rust



Flint Grey



Blush

Cilla

By Ferm Living

Composition
73% polyester
20% wool
7% nylon

Fire rating
CA117: pass
EN 1021 1/2: pass with treatment
BS 5852 0,1 C&M: pass with treatment
Crib5: not pass

Martindale
>40.000

Price group
3

Care instructions
Vacuum frequently on medium power.
Remove wet stains by carefully dabbing with a lint-free cloth or sponge wrung in warm detergent-free water. If the stain remains, we recommend professional dry cleaning.

Colour fastness to light
5 (8)

Pilling
4 (5)

Pass for
Rico



Taupe

Ultra Leather

By Sørensen Leather

Composition
100% protected leather

Fire rating
CAL117: pass
EN 1021 1/2: pass
BS 5852 0,1 C&M: pass
BS 5852 Crib5: pass with treatment

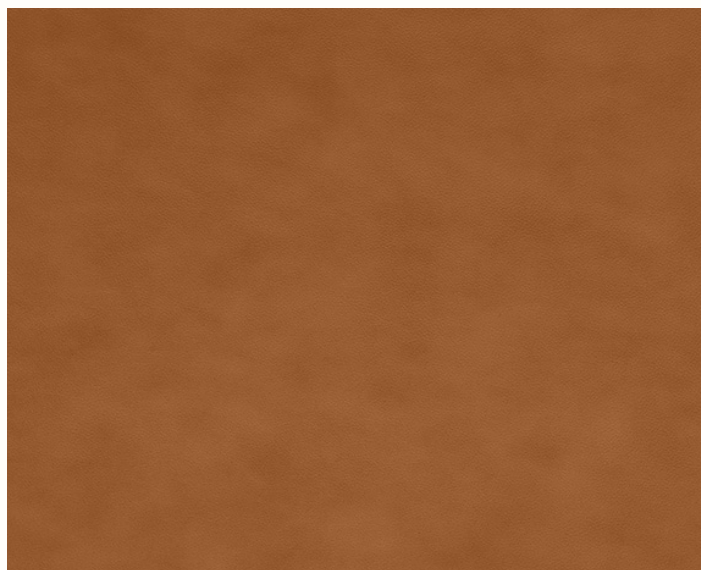
Price group
4

Care instructions
Vacuum frequently with a soft brush.
For stains use boiled water with natural soap. Whip 2-3 tablespoons of soap flakes in 1 litre water and only use the foam. Apply the foam with a soft cloth, let it dry and wipe off the leather thoroughly with a soft cotton cloth.

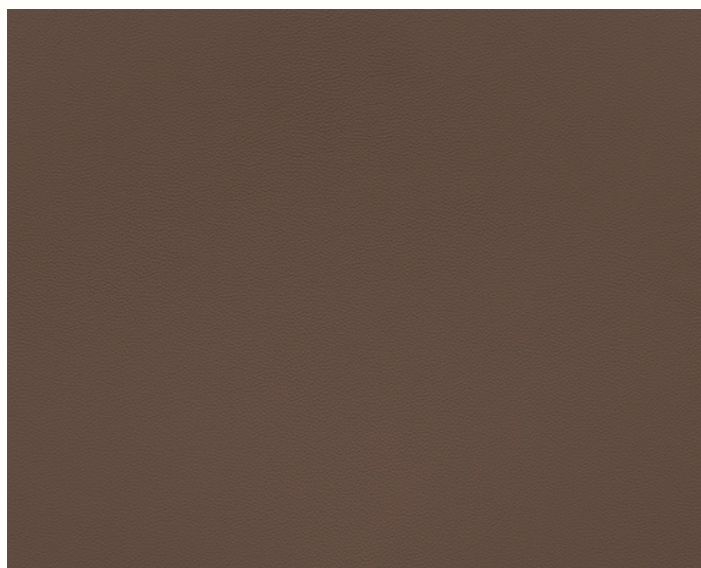
Colour fastness to light
≥ 5 (8)

Pass for
Herman

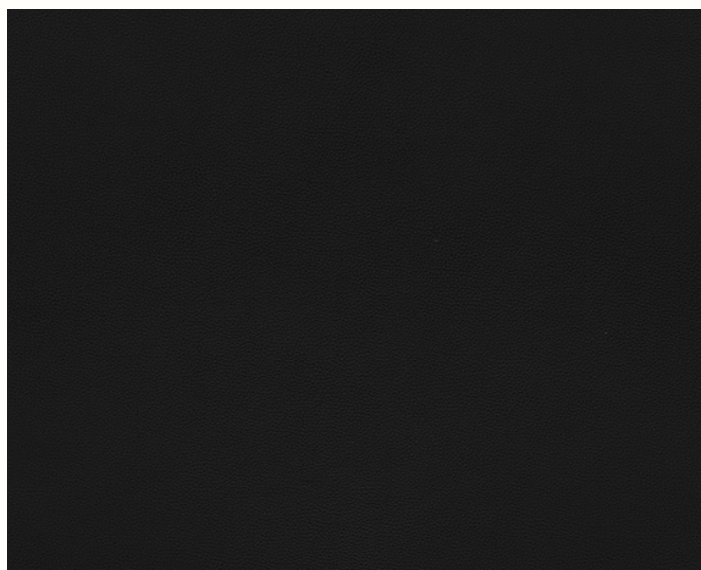
More information [here](#).



Brandy - 41574



Safari - 41586



Black - 41599

Tonus 4

By Kvadrat

Composition
90% new wool
10% helanca

Sustainability
EU Ecolabel
Greenguard Gold

Fire rating
CAL117: pass
EN 1021 1/2: pass
BS 5852 0,1 C&M: pass
BS 5852 Crib5: pass with treatment

Martindale
100.000

Price group
4

Care instructions
Vacuum frequently on medium power.
Remove wet stains by carefully dabbing with a lint-free cloth or sponge wrung in warm detergent-free water. If the stain remains, we recommend professional dry cleaning.

Colour fastness to light
5-7 (8)

Pilling
3 (5)

Pass for
Buur
Dase
Herman
Rico
Turn

More information [here](#).

Ferm Living colour selection (fabric swatches available)



All available colours



Hallingdal 65

By Kvadrat

Composition
70% new wool
30% viscose

Sustainability
EU Ecolabel
Greenguard Gold

Fire rating
CAL117: pass
EN 1021 1/2: pass
BS 5852 0,1 C&M:
pass
BS 5852 Crib5: pass

Martindale
100.000

Price group
5

Care instructions
Vacuum frequently on medium power.
Remove wet stains by carefully dabbing with a lint-free cloth or sponge wrung in warm detergent-free water. If the stain remains, we recommend professional dry cleaning.

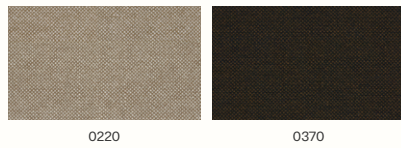
Colour fastness to light
5-7 (8)

Pilling
3-4 (5)

Pass for
Catena
Dase
Herman
Rico
Turn

More information [here](#).

Ferm Living colour selection (fabric swatches available)



All available colours



Hallingdal 65

By Kvadrat

Composition

70% new wool
30% viscose

Sustainability

EU Ecolabel
Greenguard Gold

Fire rating

CAL117: pass
EN 1021 1/2: pass
BS 5852 0,1 C&M: pass
BS 5852 Crib5: pass

Martindale

100.000

Price group

5

Care instructions

Vacuum frequently on medium power.
Remove wet stains by carefully dabbing with a lint-free cloth or sponge wrung in warm detergent-free water. If the stain remains, we recommend professional dry cleaning.

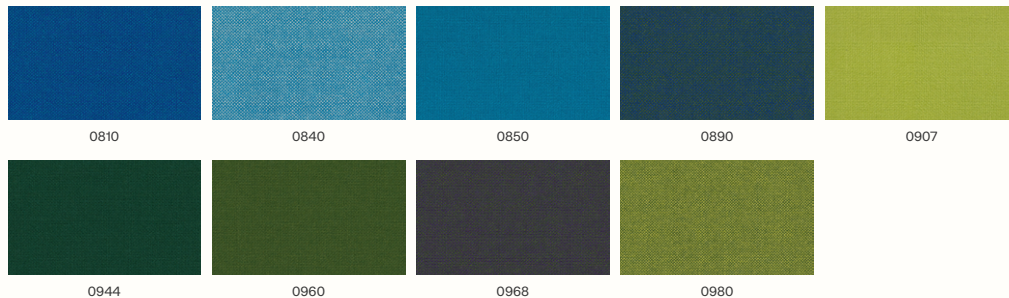
Colour fastness to light

5-7 (8)

Pass for

Catena
Dase
Herman
Rico
Turn

More information [here](#).



Leather - Envy

By Sørensen Leather

Composition
100% aniline leather

Fire rating
CAL117: pass
EN 1021 1/2: pass
BS 5852 0,1 C&M: not tested
BS 5852 Crib5: not pass

Price group
5

Care instructions
Vacuum frequently with a soft brush.
For stains use boiled water with natural soap. Whip 2-3 tablespoons of soap flakes in 1 litre water and only use the foam. Apply the foam with a soft cloth, let it dry and wipe off the leather thoroughly with a soft cotton cloth.

Colour fastness to light
3 (8)

Pass for
Herman

More information [here](#).



Cognac - 20320



Black - 20321

Sheepskin

By Skandilock

Composition

Sheepskin, Australian Crossbred,
Lamb/Sheep

Fire rating

CAL117: pass
EN 1021 1/2: pass
BS 5852 0,1 C&M: pass
BS 5852 Crib5: pass

Price group

6

Care instructions

Use a sponge, lukewarm water, and a mild wool shampoo for cleaning and immediately treat any spots with water. Keep the furniture out of direct sunlight to prevent color changes in the wool.

Colour fastness to light

4-5 (8)

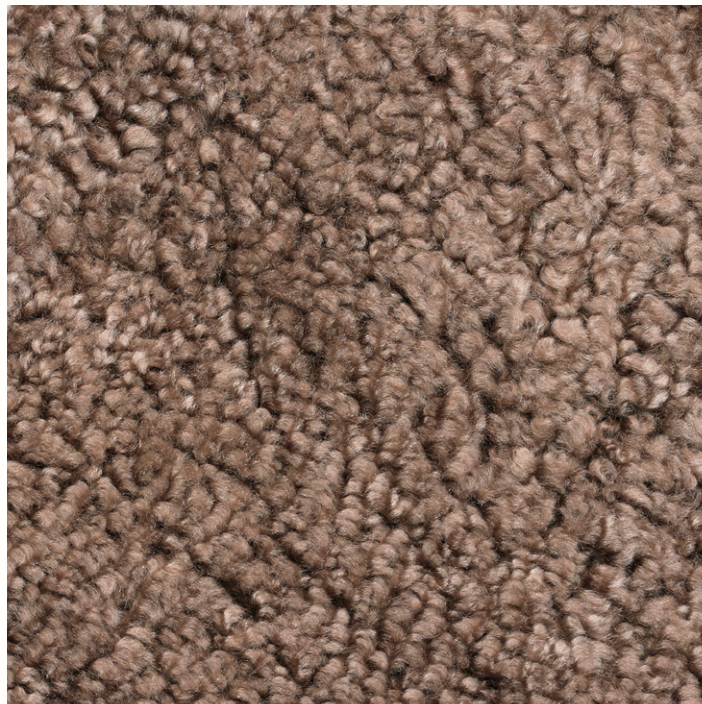
Pass for

Rico Lounge Chair
Rico Lounge Chair Piccolo
Rico Pouf
Buur

More information [here](#).



09 Moonlight



07 Sahara

For more information, please contact
your Ferm Living Sales contact

Space to feel comfortably you