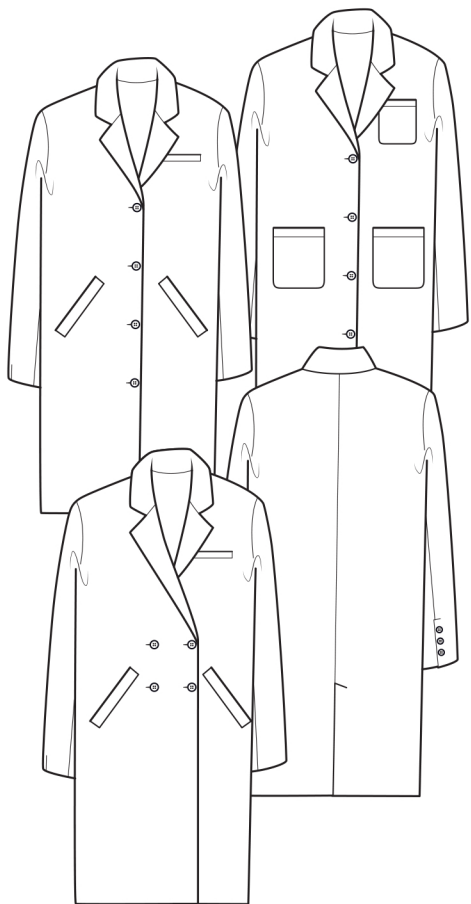


The Classic Coat



UK size	4	6	8	10	12	14	16	18	20	22
Bust (inch)	28	30	32	34	36	38	40	42	44	46
Waist (inch)	21	23	25	27	29	31	33	35	37	39
Hips (inch)	31	33	35	37	39	41	43	45	47	49
Bust (cm)	71	76	81	86	91	96	101	106	111	116
Waist (cm)	54	59	64	69	74	79	84	89	94	99
Hips (cm)	79	84	89	94	99	104	109	114	119	124

Finished measurements (cm/inches) – SN = side neck – OA = overarm

Length (cm)	106	106.5	107	107.5	108	108.5	109	109.5	110	110.5
SN to hem (inch)	41¾	42	42¼	42½	42¾	43	43¼	43½	43¾	44
Sleeve OA (cm)	74	75	76	77	78	79	80	81	82	83
SN to cuff (inch)	29¼	29½	30	30¼	30¾	31	31½	32	32¼	32¾
Bicep (cm)	32	33.5	35	36.5	38	40.5	42	43.5	45	46.5
on sleeve (inch)	12½	13	13¾	14½	15	15¾	16¼	17	17½	18
Bust (cm)	89	94	99	104	109	114	119	124	129	134
at underarm (inch)	35	37	39	41	43	45	47	49	51	53
Hip (cm)	89	94	99	104	109	114	119	124	129	134
(inch)	35	37	39	41	43	45	47	49	51	53
Hem (cm)	89	94	99	104	109	114	119	124	129	134
(inch)	35	37	39	41	43	45	47	49	51	53

Fabric required – Single or double-breasted

120cm wide	3.20	3.20	3.20	3.20	3.20	3.50	3.50	3.50	3.50	3.50
150cm wide	2.60	2.60	2.60	2.60	2.60	3.00	3.00	3.00	3.00	3.00
48" wide	3½yd	3½yd	3½yd	3½yd	3½yd	4yd	4yd	4yd	4yd	4yd
60" wide	3yd	3yd	3yd	3yd	3yd	3½yd	3½yd	3½yd	3½yd	3½yd

Lining

120cm wide	2.00	2.00	2.00	2.00	2.00	2.60	2.60	2.60	2.60	2.60
48" wide	2½yd	2½yd	2½yd	2½yd	2½yd	2½yd	2½yd	2½yd	2½yd	2½yd

Interfacing

120cm wide	1.20	1.20	1.20	1.20	1.20	1.20	1.20	1.20	1.20	1.20
48" wide	1¼yd	1¼yd	1¼yd	1¼yd	1¼yd	1¼yd	1¼yd	1¼yd	1¼yd	1¼yd

Welt pocket bag – either lining or cotton fabric

120cm wide	0.50	0.50	0.50	0.50	0.50	0.50	0.50	0.50	0.50	0.50
48" wide	½yd	½yd	½yd	½yd	½yd	½yd	½yd	½yd	½yd	½yd

Fabric Suggestions Medium weight coating fabrics: wools, tweeds, velvet, corduroy.

An unlined version would also suit cotton canvas, linen or denim for summer.

Also required – 4 large buttons for the front, 6 buttons for the sleeve cuffs plus a small button for the DB coat and matching sewing thread.