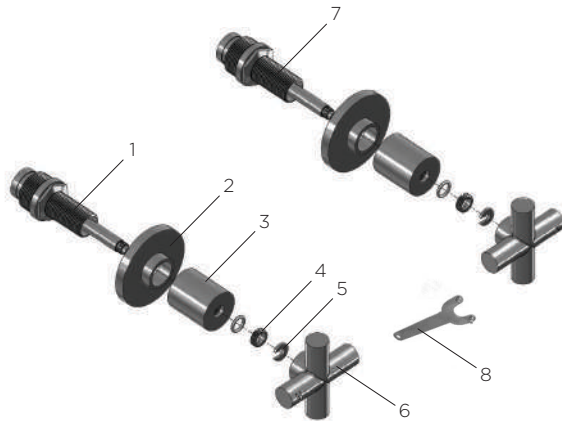


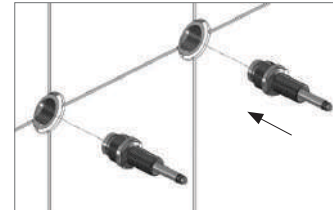
JUMPER VALVE WALL TOP ASSEMBLY



1. Hot cartridge
2. Backplate
3. Fixing nut
4. Nut
5. C-clip
6. Handle
7. Cold cartridge
8. Installation tool

INSTALLATION INSTRUCTIONS

1. Ensure the seat surface is clean and smooth, if required re-seat and flush. Disassemble the handle and back plate from the spindle if required. Install the jumper valve spindle into the breech seat and tighten the locking nut. Ensure the spindle sits correctly in terms of direction and depth before waterproofing.
2. Slide the cover plate and fixing nut over the spindle and hand tighten (if there is not enough thread to tighten the fixing nut on you will require spindle extensions, these can be purchased separately).



3. Install parts 4, 5 and 6 then tighten accordingly. Use care when using the provided 2 prong spanner to avoid scratching the spindle. Test for leaks around the spindle bodies and to ensure the wall tops are functioning correctly.

