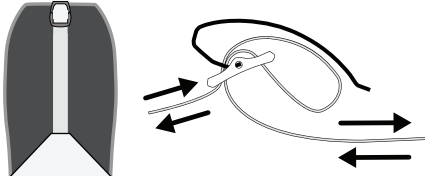


SKIN SETUP & TRIMMING

For video instructions & tutorials visit: genuineguidegear.com/g3u

1. Prepare the tail strap.

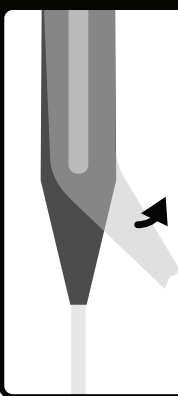


Adjust the tail clip to be about half way along the tail strap.
1. Push slack into the center loop.
2. Pull tight on the other end.

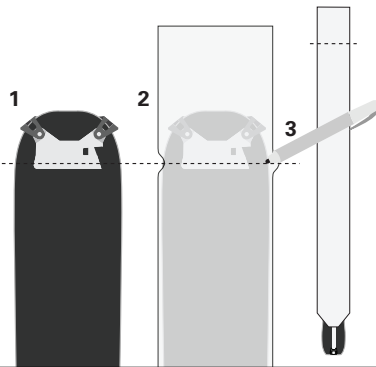
NOTE

Less fabric at the tail = lower weight and increased glide.

2. Remove release liner.



2. Determine skin length.

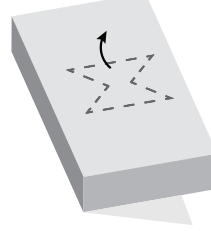


1. Position the ESCAPIST tip.
2. **With the tail strap secured on the ski**, extend skin flush centered along the length of the ski.
3. Mark the "fold line" on the skin where it overlays the tip assembly bulge.

*Do not trim excess skin material yet, wait for step #5.

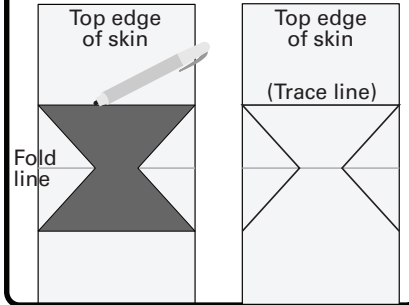
3. Remove skin tip marking template.

Remove the perforated skin marking template from the bottom of the box.



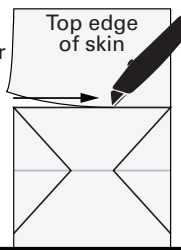
4. Trace and mark trim shape.

Align the center of the skin tip marking template with the fold line.

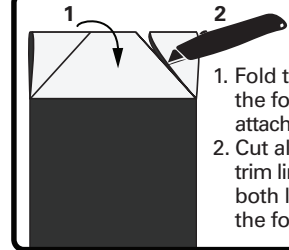


5. Trim excess length.

Using a utility knife or a sharp pair of scissors, trim the top line to remove excess length.



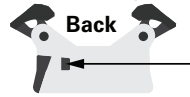
6. Fold skin over itself and trim.



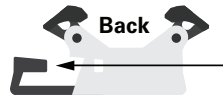
1. Fold the skin at the fold line and attach glue to glue.
2. Cut along the trim lines through both layers of the folded skin

7. Prepare ESCAPIST tip.

1. Press the red tab on the back of the ESCAPIST tip to release.

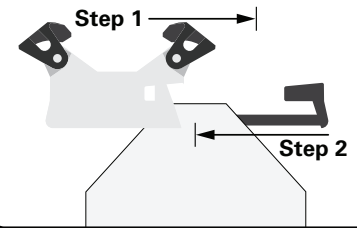


2. Pull the red skewer apart from the white tip assembly.

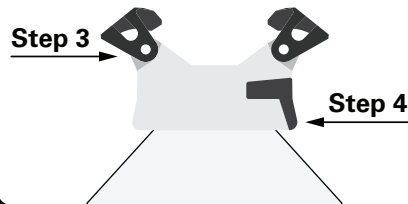


8. Begin tip and skewer install.

Insert folded skin into ESCAPIST tip about 3/4 of the way, then insert skewer into the skin about 1/2 way.



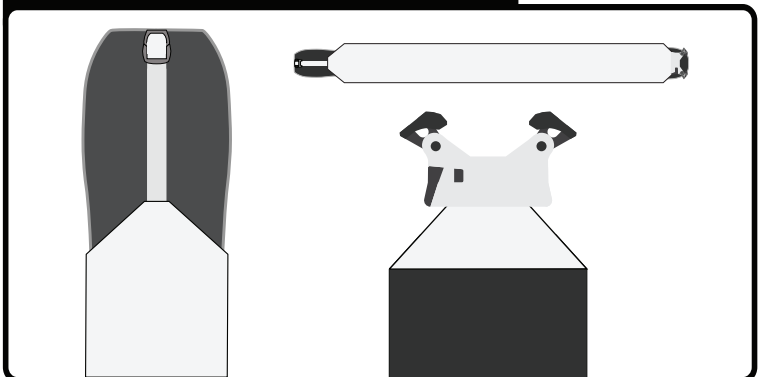
9. Complete insertion until skewer clicks into place.



DOUBLE CHECK

Flip over the tip to check the tab on the skewer is fully engaged in the tip body. If it is not, go back and trim away a little more fabric from step #6.

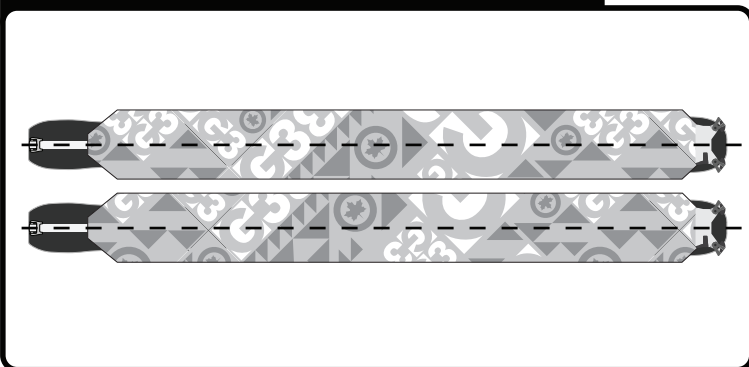
10. Readjust skin tail to confirm sizing.



ESCAPIST
CUSTOMIZABLE
CLIMBING SKINS

CARE + STORAGE

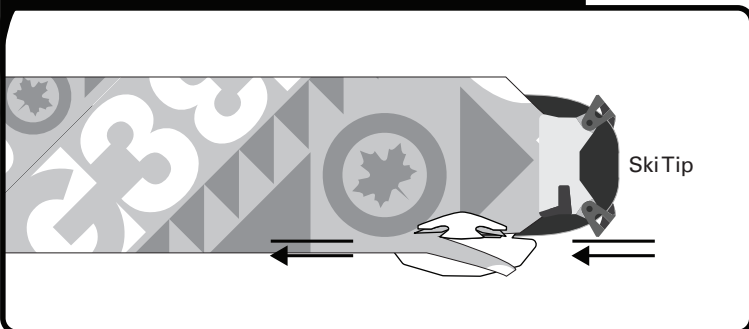
11. Attach & center skin for sidecut trimming.



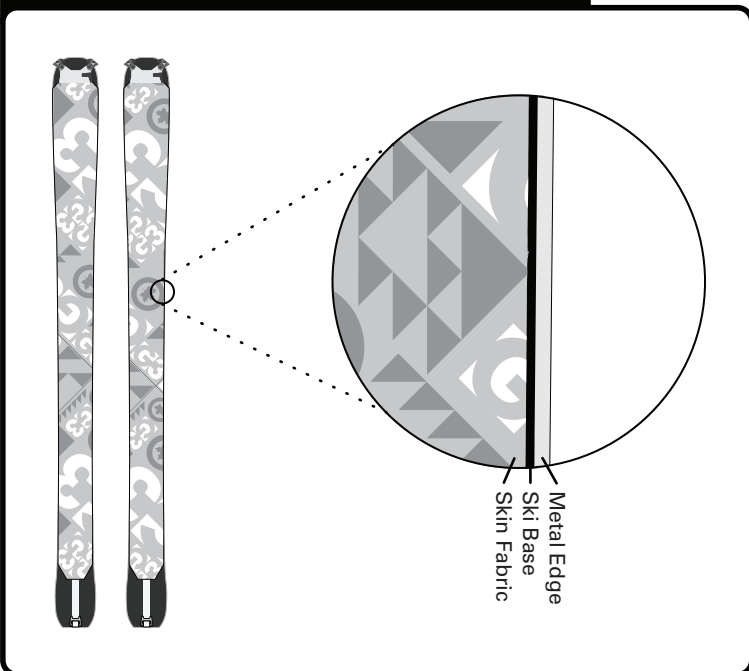
12. Align G3 trim tool with ski edge.



13. Trim from tip to tail along the ski edge, repeat on both sides.



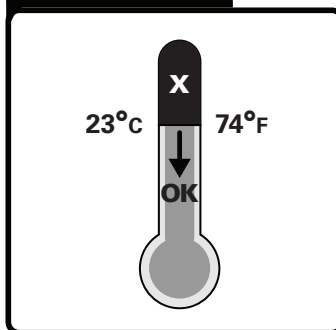
14. Trimmed skins should reveal both edges.



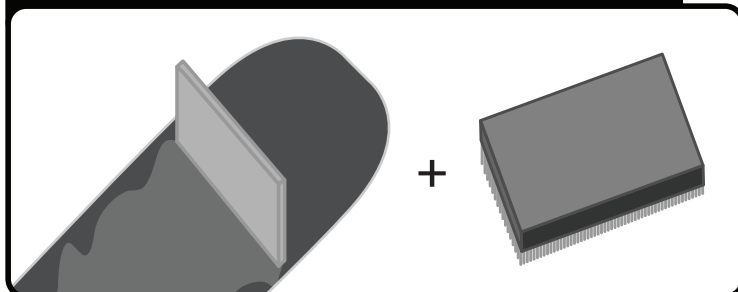
Keep skin glue clean.



Keep skins in a cool, dry place.



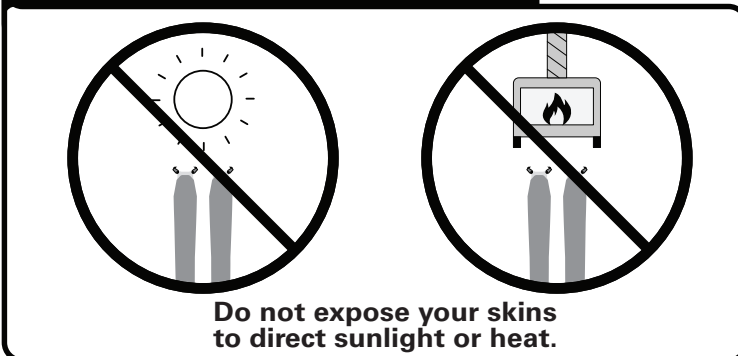
Thoroughly scrape and brush excess wax from skins.



Do not store your skins on your skis.



Thoroughly dry both sides of your skins.



WARRANTY

G3 warrants that the product will meet the specification stated in the instructions and G3 agrees to repair or replace the product free of charge if the product does not conform to the specifications. ALL WARRANTIES OF MERCHANTABILITY OR OF FITNESS FOR A PARTICULAR PURPOSE ARE HEREBY EXCLUDED AND/OR WAIVED. For more warranty information go to www.genuineguidegear.com

WARNING

Winter backcountry travel is inherently dangerous. There is always the risk of serious injury or death. You are solely responsible for your actions and decisions. Familiarize yourself with the use of this product, its limitations and capabilities. Learn proper skiing techniques, avalanche awareness and exercise good judgment in conjunction with using this product properly. Use this equipment and ski at your own risk.