

FRITZ HANSEN



LEATHER GUIDE

Fritz Hansen offers a wide variety of leather types, selected for their unique beauty, high quality and supreme durability – regardless of which furniture design they cover.

LEATHER

A NATURAL MATERIAL:

Leather is prized for its natural beauty and durability. The surface of each hide bears witness to the active life of the animal. Insect bites, scars and wrinkles are all normal features of leather, adding to its unique and characterful expression.

NATURAL MARKS

Typical characteristics of leather include:

- Insect bites
- Scars
- Wrinkles
- Beauty marks
- Colour variations
- Grain variations
- Hair whirls



CARE & MAINTENANCE

All types of leather from Fritz Hansen benefit from regular vacuuming with a soft brush nozzle. Avoid using cleaning products and sharp objects on leather. If cleaning is required, dissolve 2-3 tablespoons of soap flakes in 1 litre of hot water, whipping to a foam. Apply the foam to the leather with a soft cloth. Allow to dry before gently buffing the surface with a soft cotton cloth.

STAIN REMOVAL

We recommend only soap flakes for stain removal. Damage caused by stain removers and chemical cleaners is not covered by warranty.

CAUTION

Spot cleaning is not recommended for leather as it can cause discolouration. Instead, treat the entire surface area as recommended.

Textile dyes from non-colourfast clothing may permanently discolour leather with a natural surface finish (Grace, Natural, Rustik, Embrace).

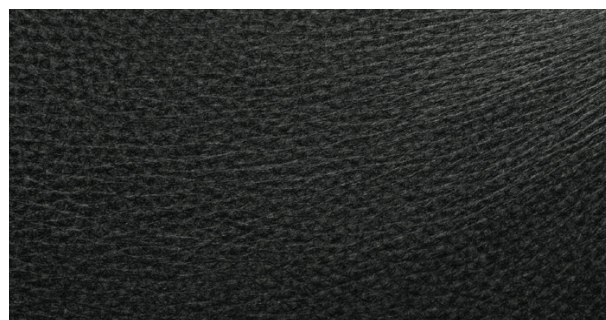
AURA

Aura is a durable leather with a firm handle, a matte finish and a uniform look. Each hide has been treated – or ‘corrected’ – with a surface finish for added durability, protecting it from both light and dirt. Sanded with an artificial grain, very few natural marks remain. As corrected leather is a hard-wearing, easy to maintain fabric with good comfort, it is a popular upholstery for furniture in high traffic areas. Aura was originally developed for Arne Jacobsen furniture.

FEATURES

European rawhide. Chrome-tanned. Water-based aniline dye. Water and dirt repellent. Stain- and smudge-resistant.

Thickness: 1.4 – 1.6 mm.



BLACK BLACK BROWN COGNAC WALNUT

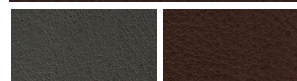
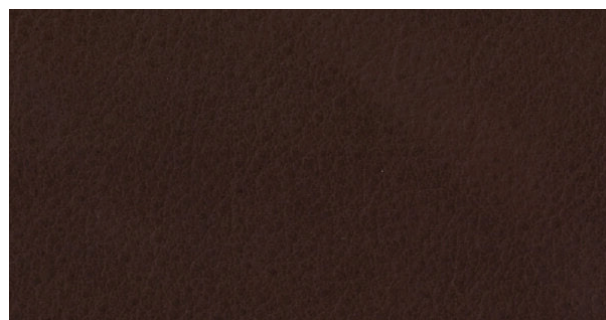
EMBRACE

A premium, full grain aniline leather, Embrace has an untreated surface that displays its natural beauty and unique characteristics – including wrinkles and colour variations. Its superior degree of comfort, breathability and softness make it an excellent choice for upholstery. Over time, aniline leathers will patinate with use and exposure to light: coloured aniline leathers will fade, and natural aniline leathers will darken.

FEATURES

Finest European rawhide. Chrome-tanned. Water-based aniline dye. Extremely supple and soft to the touch.

Thickness 1.2 – 1.4 mm.



CONCRETE GREY CHOCOLATE

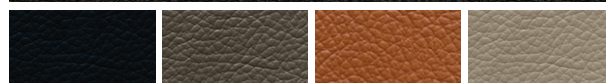
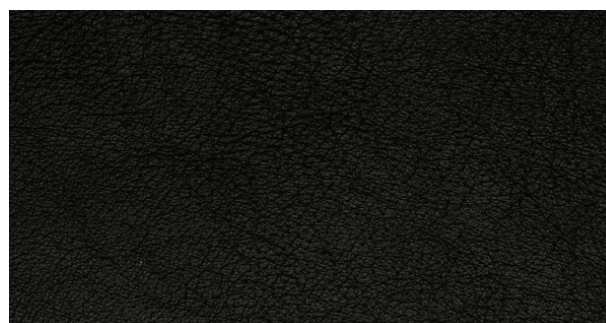
ESSENTIAL

Lightly buffed for a fine grain finish, Essential has a smooth, uniform appearance and a soft handle. This easy-to-maintain, stain-resistant leather has a high level of colourfastness, making it ideal for use on everyday furniture.

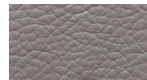
FEATURES

European rawhide. Chrome-tanned. Water-based aniline dye. Smudge-proof. Water and dirt repellent. Stain resistant. OEKO-TEX™-certified.

Thickness: 1.0 – 1.2 mm.



BLACK STONE WALNUT LIGHT GREY



LAVA

GRACE

Grace is a premium, aniline leather from the finest quality hide. Displaying characterful, unique markings, it has a soft handle and an exclusive look. Its natural surface structure varies in colour and acquires a lighter patina over time. Breathable and comfortable, this full grain leather adds a timeless sense of luxury to furniture designs.

FEATURES

Finest European rawhide. Water-based aniline dye. Chrome- and vegetable-tanned for enhanced firmness. Visible natural marks. Patinates naturally over time according to light conditions and usage.

Thickness: 1.2 – 1.4 mm.



BLACK

DARK BROWN

WALNUT

NATURAL

Natural is a full grain, aniline leather made from premium quality hide - less than 1% of all hides in the world can be used for this type of leather. Displaying unique, natural characteristics, it also offers a high degree of comfort, breathability and softness. Its open surface will darken over time to a beautiful, rich tone.

FEATURES

Finest European rawhide. Vegetable-tanned with extracts from the mimosa plant. Patinates over time from its original light colour to pale pink to light brown.

Thickness 1.2 – 1.4 mm.



NATURAL

RUSTIK

A premium upholstery choice, Rustik is made from the highest quality hide. Its natural surface is vegetable-tanned and chrome-free, retaining its beautiful, natural imperfections which lend unique character to furniture. Rustik patinates over time, lightening with use and conditions.

FEATURES

Finest European rawhide. Chrome-free. Water-based aniline dye. Patinates to a lighter colour over time.

Thickness: 1.2 – 1.4 mm.



RUSTIK

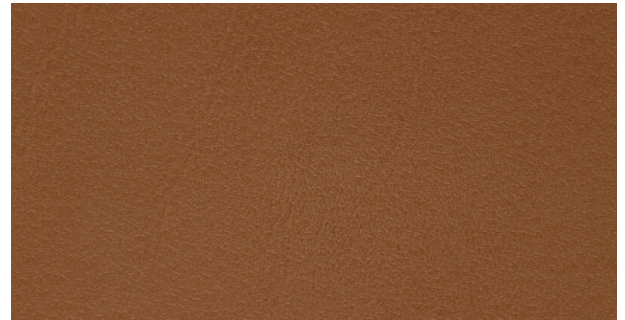
SOFT

Supremely smooth and soft, as its name suggests, this leather offers exceptional comfort. The fine grain, semi-aniline leather has a light surface finish for durability and ease of use, retaining its natural shape and uniform surface structure as well as its unique characteristics.

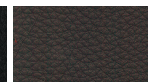
FEATURES

European rawhide. Chrome-tanned. Water-based aniline dye. Smudge-proof. Colourfast. Water and dirt repellent. Stain resistant. OEKO-TEX®-certified.

Thickness: 1.0 – 1.2 mm.



BLACK



BLACK BROWN



COGNAC



WALNUT