

NIBCO®

Fire Protection Valves



c **UL** us
LISTED

FM
APPROVED

NIBCO®

BUTTERFLY VALVES



GD-4865-8N



- Grooved style
- Nylon coated ductile iron body
- Extended neck
- Elastomer encapsulated disc
- Internal supervisory switches
- Working pressure 20.7 bar-300 PSI

Material No.	Size (Inch)
NLK662E	2 ½
NLK662F	3
NLK662H	4
NLK662K	6
NLK662L	8
NLK662M	10
NLK856F	76mm
NLK856K	165mm

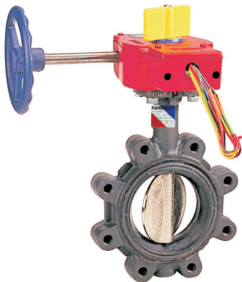


GD-4865C-8N



- Grooved style
- Designed for normally closed position monitoring
- Nylon coated ductile iron body
- Extended neck
- Elastomer encapsulated disc
- Internal monitoring switches
- Working pressure 20.7 bar-300 PSI

Material No.	Size (Inch)
NLK862E	2 ½
NLK862F	3
NLK862H	4
NLK862K	6
NLK862L	8
NLK862M	10
NLK862FF	76mm
NLK862KK	165mm



LD-3510-8



- Lug style
- Molded in seat
- Internal supervisory switches
- Working pressure 17.2 bar-250 PSI

Material No.	Size (Inch)
NLG801D	2
NLG801E	2 ½
NLG801F	3
NLG801H	4
NLG801J	5
NLG801K	6
NLG801L	8
NLG801M	10
NLG801N	12



WD-3510-8



- Wafer style
- Molded in seat
- Internal supervisory switches
- Working pressure 17.2 bar-250 PSI

Material No.	Size (Inch)
NLH801D	2
NLH801E	2 ½
NLH801F	3
NLH801H	4
NLH801J	5
NLH801K	6
NLH801L	8
NLH801M	10
NLH801N	12

Visit our website for the most current information.

NIBCO®

CHECK VALVES

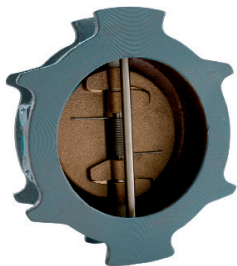


F-908-W



- Iron body
- Flanged
- Bolted bonnet
- Horizontal swing
- Renewable seat and disc
- Working pressure 12.1 bar-175 PSI

Material No.	Size (Inch)
NHDX00E	2 ½
NHDX00F	3
NHDX00H	4
NHDX00J	5
NHDX00K	6
NHDX00L	8
NHDX00M	10
NHDX00N	12



KW-900-W-LF



- Lead-free*
- Iron body
- Wafer style
- Double-door
- Rubber seat
- Spring actuated
- Working pressure 17.2 bar-250 PSI

Material No.	Size (Inch)
NLM15XE	2 ½
NLM15XF	3
NLM15XH	4
NLM15XJ	5
NLM15XK	6
NLM15XL	8
NLM15XM	10
NLM15XN	12
NLM15XT*	14
NLM15XU*	16

*Note: 14" and 16" sizes, 200 PSI
WWP, FM approved only



KG-900-W-LF



- Lead-free*
- Iron body
- Grooved style
- Twin disc
- Bronze disc
- Nitrile
- Spring actuated
- Working pressure 17.2 bar-250 PSI

Material No.	Size (Inch)
NLM25XE	2 ½
NLM25XF	3
NLM25XH	4
NLM25XJ	5
NLM25XK	6
NLM25XL	8
NLM25XM	10
NLM25XN	12



KT-403-W

- Bronze
- Horizontal swing
- Rubber disc
- NPT threads
- Working pressure 13.8 bar-200 PSI

Material No.	Size (Inch)
NL7E006	½
NL7E008	¾
NL7E00A	1
NL7E00B	1 ¼
NL7E00C	1 ½
NL7E00D	2

Visit our website for the most current information.

*Weighted average lead content ≤ 0.25%

GATE VALVES



F-607-RWS



- Iron body
- Flanged
- Outside screw and yoke
- Resilient wedge
- Pre-grooved stem for supervisory switch
- Epoxy coated interior/exterior
- Working pressure 20.6 bar-300 PSI

Material No.	Size (Inch)
NS2920XE	2 ½
NS2920XF	3
NS2920H	4
NS2920K	6
NS2920L	8
NS2920M	10
NS2920N	12
NS2920T*	14
NS2920XU*	16

*Note: 14" and 16" sizes, 250 PSI



F-607-OTS



- Iron body
- Flanged
- Outside screw and yoke
- Solid wedge
- Bolted bonnet
- Pre-grooved stem for supervisory switch
- Working pressure 12.1 bar-175 PSI

Material No.	Size (Inch)
NH24LOE	2 ½
NH24LOF	3
NH24LOH	4
NH24LOJ	5
NH24LOK	6
NH24LOL	8
NH24LOM	10
NH24LON	12

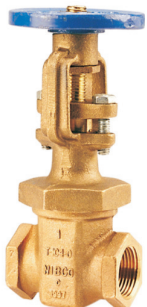


F-609-RWS



- Iron body
- Flanged
- Indicator post pattern
- Non-rising stem
- Resilient wedge
- Epoxy coated interior/exterior
- Working pressure 20.6 bar-300 PSI

Material No.	Size (Inch)
NS5031H	4
NS5031K	6
NS5031L	8
NS5031M	10
NS5031N	12



T-104-0



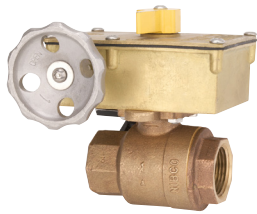
- Bronze
- Outside Screw and Yoke
- Solid Wedge
- Block Pattern
- Screw-over Bonnet
- NPT threads
- Working pressure 12.1 bar-175 PSI

Material No.	Size (Inch)
NL03L06	½
NL03L08	¾
NL03L0A	1
NL03L0B	1 ¼
NL03L0C	1 ½
NL03L0D	2

Visit our website for the most current information.

*Weighted average lead content ≤ 0.25%

BALL VALVES



KT-505-8



- Bronze
- Full port 1" to 2", standard port 2-1/2"
- Two-piece body
- Chrome plated brass ball and silicon bronze stem
- Blowout-proof stem
- Multi-turn actuator
- Threaded end connections
- Dezincification resistant
- Working pressure 20.7 bar-300 PSI

Material No.	Size (Inch)
NL93X7A	1
NL93X7B	1 ¼
NL93X7C	1 ½
NL93X7D	2
NL93X7E	2 ½



KT-585-70-UL
Full Port



- Bronze
- Full port
- Two-piece body
- Chrome plated ball
- Blowout-proof stem
- Reinforced PTFE seats
- NPT threads
- Working pressure 20.7 bar-300 PSI

Material No.	Size (Inch)
NL95044	¼
NL95045	3/8
NL95046	½
NL95048	¾
NL9504A	1

KT-580-70-UL

Conventional Port

NL9504B	1 ¼
NL9504C	1 ½
NL9504D	2



T-FP-600A



- Brass
- Two-piece body
- Full port
- PTFE seats
- Blowout-proof stem
- NPT threads
- Working pressure 40 bar-580 PSI

Material No.	Size (Inch)
NL998H4	¼
NL998H5	3/8
NL998H6	½
NL998H8	¾
NL998HA	1
NL998HB	1 ¼
NL998HC	1 ½
NL998HD	2
NL998HE	2 ½
NL998HF	3
NL998HH	4

Visit our website for the most current information.

INDICATOR POSTS



NIP-1AU



- Indicator Post
 - Upright Post
- For use with non-rising stem indicator post style gate valves F-609-RWS

Material No.	Product No.
RG02985	NIP-1AU
RG02986	NIP-1AUE
RG02987	NIP-1AUJEE
RG02988	NIP-1AUJEE



NIP-2AW



- Indicator Post
 - Wall Post
- For use with non-rising stem indicator post style gate valves F-609-RWS

Material No.	Product No.
RG02984P	NIP-2AW

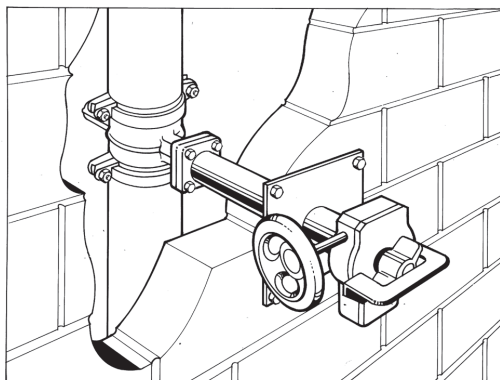
BUTTERFLY VALVES INDICATOR POST ASSEMBLIES

Available as Wall Post (WP*) or Underground (GP**)

Available with Internal Supervisory Switch 2" - 8" (UL Listed Indoor/Outdoor) - (8N Version)

Available with Grooved, Wafer or Lug Style Valves (UL Listed, Not FM Approved)

See Tech Bulletin on nibco.com for proper post sizing



Mounting Hole Size

2" - 8" — 5¹/₂" hole diameter

10" - 12" — 7¹/₂" hole diameter

GD-4865-8WP

Grooved Butterfly
Wall Post Assembly
(22" standard length)

LD-3510-4GP

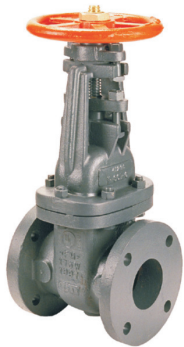
Lug/Wafer Butterfly
Underground Post Assembly **
(66" standard length)

* 9" x 9" painted steel wall plate included with wall post assembly.

** Ground line to top of indicator should be at least 36".

Visit our website for the most current information.

350 PSI WWP FIRE PROTECTION VALVES*



F-697-0



- Iron body, bronze mounted trim (IBBM)
- Class 250 flanged
- Outside screw and yoke
- Solid wedge
- Bolted bonnet
- Pre-grooved stem for supervisory switch
- Working pressure 20.7 bar-300 PSI FM
- Working pressure 24.1 bar-350 PSI UL

Material No.	Size (Inch)
NHAWLOE	2 ½
NHAWLOF	3
NHAWLOH	4
NHAWLOK	5
NHAWLOL	6
NHAWLOM	8
NH24L0M	10



GD-6865-8N



- Grooved style
- Nylon coated ductile iron body
- Extended neck
- Elastomer encapsulated disc
- Internal supervisory switches
- Working pressure 350 PSI

Material No.	Size (Inch)
NLK984E	2 ½
NLK984F	3
NLK984H	4
NLK984L	6
NLK984M	8
NLK985F	10
NLK985K	76mm
NLK856K	165mm



GD-6865C-8N



- Grooved style
- Designed for normally closed position monitoring
- Nylon coated ductile iron body
- Extended neck
- Elastomer encapsulated disc
- Internal monitoring switches
- Working pressure 20.7 bar-350 PSI

Material No.	Size (Inch)
NLK962E	2 ½
NLK962F	3
NLK962H	4
NLK962K	6
NLK962L	8
NLK962M	10
NLK962FF	76mm
NLK962KK	165mm



KG-900-W 350



- Grooved end connections
- Bronze disc
- Renewable disc
- Spring actuated
- Working pressure 24.1 bar-350 PSI

Material No.	Size (Inch)
NLM350XE	2 ½
NLM350XF	3
NLM350XH	4
NLM350XK	6
NLM350XL	8
NLM350XM	10

*These valves are being added to the NIBCO® hi-rise iron gate and check valve line in keeping up with today's higher system pressure trends. (See current Fire Protection Catalog pages).

Visit our website for the most current information.

VALVES



Pressure-rated bronze, iron and alloy-iron gate, globe and check valves • Pressure-rated bronze ball valves • Boiler specialty valves • Commercial and industrial butterfly valves • Lined butterfly valves • Circuit balancing valves • Carbon and stainless steel ball valves • ANSI flanged steel ball valves • Lined ball valves • Pneumatic and electric actuators and controls • Grooved ball and butterfly valves • High performance butterfly valves • UL/FM fire protection valves • MSS specification valves • Bronze specialty valves • Low pressure gate, globe, check and ball valves • Frostproof sillcocks • Quarter-turn supply stops • Quarter-turn low pressure valves • PVC and CPVC plumbing and industrial ball valves • Bronze & Iron Y-strainers • Sample valves • Sanitary valves • Lead-Free* valves • Coil-Connect® Kits

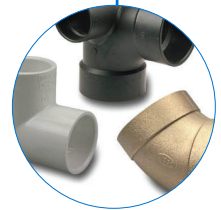
*Weighted average lead content ≤0.25%

FITTINGS

Wrot and cast copper pressure and drainage fittings • Cast copper alloy flanges • Wrot and cast press fittings • ABS and PVC DWV fittings • Schedule 40 PVC pressure fittings • CPVC CTS fittings • CPVC CTS-to-metal transition fittings • Schedule 80 PVC and CPVC systems • CPVC BlazeMaster® fire protection fittings • Lead-Free* fittings

BlazeMaster® is a registered trademark of The Lubrizol Corporation.

*Weighted average lead content ≤0.25%



FLEXIBLE PIPING SYSTEMS

PE-RT and PEX tubing for potable and radiant applications • Insulated tubing • Risers • Ice maker tubing • Silicon Performance Bronze® fittings • Poly alloy fittings • Home Run Manifold® • Radiant heat manifolds • Ball valves and supply stops • Connections, tools and accessories • Radiant heat controls and panels



INDUSTRIAL PLASTICS

Thermoplastic pipe, valves, and fittings in PVC, Corzan® CPVC, polypropylene and PVDF Kynar® • Pneumatic and electric actuation systems • BlazeMaster® CPVC fire protection fittings

BlazeMaster® and Corzan® are registered trademarks of the Lubrizol Corporation • Kynar® is a registered trademark of Arkema Inc.



eNIBCO

EDI—Electronic Data Interchange • VMI—Vendor Managed Inventory • NIBCO.com • NIBCOpartner.com



NIBCO®
AHEAD OF THE FLOW®

NIBCO INC.
WORLD HEADQUARTERS
WEB: www.nibco.com

1516 MIDDLEBURY STREET
ELKHART, IN 46516-4740
USA

DOMESTIC CUSTOMER SERVICE
PHONE: 800.234.0227
FAX: 800.234.0557

TECHNICAL SERVICE
PHONE: 888.446.4226
FAX: 888.336.4226

INTERNATIONAL OFFICE
PHONE: +1/574.295.3327
FAX: +1/574.295.3455