

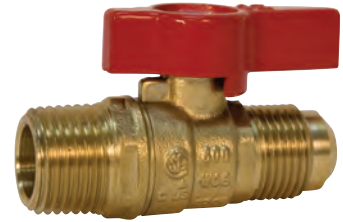
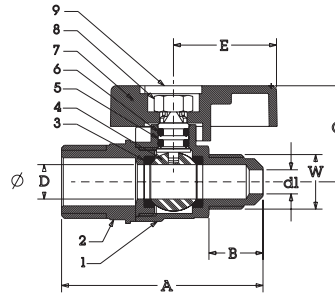
# Gas Ball Valve

## GBV38M\*/GBVA12M — Flare x MPT, Lever Handle

- CSA Certified to ½ PSI for indoor appliance connections per ANSI Z21.15/CSA 9.1
- 5 PSI for indoor shut-off per ASME B16.44 and CGA CR91-002

### MATERIAL LIST

PART	SPECIFICATION
1. Body	Forged Brass <sup>1</sup> CU>57%
2. End Piece	Forged Brass <sup>1</sup> CU>57%
3. Seat	PTFE, Glass Reinforced
4. Ball	Brass, Chrome Plated
5. Stem	Brass
6. O-Ring	Nitrile
7. Handle	Aluminum, Painted Red
8. Nut	Steel, Plated
9. ID Plate	Aluminum



### DIMENSIONS—WEIGHT

Size (In.)	A	B	C	d <sup>1</sup>	D	E	W	Wgt
3/8	2.35	.62	1.14	.28	.39	1.19	5/8-18 UNF	.34
1/2	2.47	.75	1.14	.39	.39	1.19	3/4-16 UNF	.36

\* GBV3/8 and GBV12FL not CSA certified

Note: <sup>1</sup> For Material Certification, contact NIBCO Technical Services.

NOT FOR USE WITH POTABLE DRINKING WATER APPLICATIONS AFTER JANUARY 3, 2014.



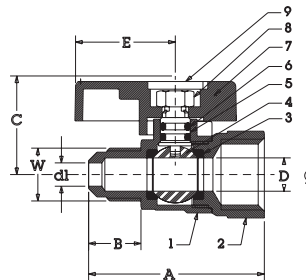
**WARNING:** This product can expose you to chemicals including lead, which is known to the State of California to cause cancer and birth defects or other reproductive harm. For more information go to [www.P65Warnings.ca.gov](http://www.P65Warnings.ca.gov).

## GBVA — Flare x FPT, Lever Handle

- CSA Certified to ½ PSI for indoor appliance connections per ANSI Z21.15/CSA 9.1
- 5 PSI for indoor shut-off per ASME B16.44 and CGA CR91-002

### MATERIAL LIST

PART	SPECIFICATION
1. Body	Forged Brass <sup>1</sup> CU>57%
2. End Piece	Forged Brass <sup>1</sup> CU>57%
3. Seat	PTFE, Glass Reinforced
4. Ball	Brass, Chrome Plated
5. Stem	Brass
6. O-Ring	Nitrile
7. Handle	Aluminum, Painted Red
8. Ball Seat	PTFE
9. Nut	Steel, Plated
10. ID Plate	Aluminum



### DIMENSIONS—WEIGHT

Size (In.)	A	B	C	d <sup>1</sup>	D	E	W	Wgt
3/8	2.13	.62	1.14	.28	.39	1.19	5/8-18 UNF	.35
1/2	2.25	.75	1.14	.39	.39	1.19	3/4-16 UNF	.44

Note: <sup>1</sup> For Material Certification, contact NIBCO Technical Services.

NOT FOR USE WITH POTABLE DRINKING WATER APPLICATIONS AFTER JANUARY 3, 2014.



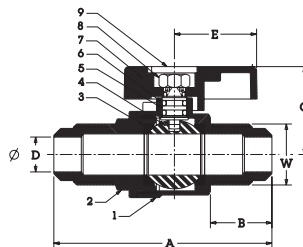
**WARNING:** This product can expose you to chemicals including lead, which is known to the State of California to cause cancer and birth defects or other reproductive harm. For more information go to [www.P65Warnings.ca.gov](http://www.P65Warnings.ca.gov).

## GBVA38FL/GBV12FL\* — Flare x Flare, Lever Handle

- CSA Certified to ½ PSI for indoor appliance connections per ANSI Z21.15/CSA 9.1
- 5 PSI for indoor shut-off per ASME B16.44 and CGA CR91-002

### MATERIAL LIST

PART	SPECIFICATION
1. Body	Forged Brass <sup>1</sup> CU>57%
2. End Piece	Forged Brass <sup>1</sup> CU>57%
3. Seat	PTFE, Glass Reinforced
4. Ball	Brass, Chrome Plated
5. Stem	Brass
6. O-Ring	Nitrile
7. Handle	Aluminum, Painted Red
8. Ball Seat	PTFE
9. Nut	Steel, Plated
10. ID Plate	Aluminum



### DIMENSIONS—WEIGHT

Size (In.)	A	B	C	D	E	W	Wgt
3/8	2.37	.62	1.14	.28	1.19	5/8-18 UNF	.36
1/2	2.62	.75	1.14	.39	1.19	3/4-16 UNF	.47

\* GBV3/8 and GBV12FL not CSA certified

Note: <sup>1</sup> For Material Certification, contact NIBCO Technical Services.

NOT FOR USE WITH POTABLE DRINKING WATER APPLICATIONS AFTER JANUARY 3, 2014.



**WARNING:** This product can expose you to chemicals including lead, which is known to the State of California to cause cancer and birth defects or other reproductive harm. For more information go to [www.P65Warnings.ca.gov](http://www.P65Warnings.ca.gov).