

# BUILT-IN FIREPLACE

**550 BUILT-IN FIREPLACE**

**KUNA 700 BUILT-IN FIREPLACE**

**750 BUILT-IN FIREPLACE**

**750 CORE BUILT-IN FIREPLACE**

**ASSEMBLY & OPERATING INSTRUCTIONS.**



**Questions, problems, missing parts?** Before returning to your retailer, call our Customer Service Department at Tel: (010) 001 6342, 8 a.m. - 5 p.m., CAT, Monday-Thursday and Friday till 2 p.m. Or send us an E-mail at [service@megagroup.co.za](mailto:service@megagroup.co.za) or visit us online at: [www.megamaster.co.za](http://www.megamaster.co.za)

**megamaster™**

TOGETHER, MADE BETTER

# THIS MANUAL IS DESIGNED TO FIT INTO A DRAWER,

## BUT THAT'S NOT WHERE IT BELONGS.

We get it. You've just unboxed your Megamaster Built-in Fireplace and you can't wait to fire it up. The feeling of warmth and relaxation and everything else you could possibly imagine certainly aren't going to assemble themselves.

At Megamaster, we believe anything worth doing is worth doing well. That's why, as with all of our products, we've put a lot of thought and effort into this user manual. It really is the first step towards making your time with friends and family more valuable.

### INSTALLATION INSTRUCTIONS & USER MANUAL

Actual product may differ slightly from the picture above Megamaster products and factories comply with the Quality Management System standards required by all major retailers in South Africa.

+27 (0)12 802 1515 PO Box 15, Woodlands, 072, SouthAfrica

[www.megamaster.co.za](http://www.megamaster.co.za)

Email: [service@megagroup.co.za](mailto:service@megagroup.co.za)

**megamaster**<sup>™</sup>  
TOGETHER. MADE BETTER<sup>™</sup>

At Megamaster, we understand that the warmth of the flames is really the warmth of human connection. And that the more we kindle it, the brighter it burns. Times may change. Technology may come or go. But there will always be one real and meaningful place for us to gather. For hugs. For smiles. For literally laughing out loud. Where our hearts and minds are free because we have everything we truly need.

We believe that, in those moments, it's more than a Fireplace. It's a celebration. It's together, made better.

Safety Instructions and fire bricks information .....	<b>4</b>
Hardware Contents .....	<b>6 - 7</b>
Size and Measurements .....	<b>9</b>
Typical/Recommended Installation .....	<b>10 - 11</b>
Operating Instructions .....	<b>12</b>
Care and Maintenance .....	<b>11</b>
Trouble Shooting. ....	<b>14</b>
Warranty Information .....	<b>16</b>



- Please read the following instructions carefully before attempting to assemble, operate or install the product.
- Failure to follow these instructions may result in serious bodily injury and/or property damage.
- Please ensure that you inspect the unit prior to any installation for any defects as this may affect the workmanship and structure warranty after the installation. If you have questions regarding the product please call customer service at (+27) 10 001 6342 or email [service@megagroup.co.za](mailto:service@megagroup.co.za)
- FOR OUTDOOR USE ONLY.
- TO REDUCE THE RISK OF BURN HAZARD OR OTHER INJURY, READ THE MANUAL CAREFULLY AND COMPLETELY BEFORE USING THE PRODUCT.



## DANGER

1. Do not repair or replace any part of the unit unless specifically recommended in this manual. All other service should be referred to a qualified technician. This unit is not intended to be installed in or on recreational vehicles or boats.
2. Children should not be left alone or unattended in an area where the unit is being used. Do not allow them to sit, stand or play in or around the unit at any time.
3. Do not touch the unit while it is in operation, or until it has cooled down after use.
4. Do not use gasoline, alcohol, or other highly volatile fluids to ignite the unit.
5. Do not add starter fluid or lighter fluid to already hot or warm unit.
6. Do not use this unit unless all parts are in place. The unit must be properly assembled according to the assembly instructions.
7. Do not leave the unit unattended while in use.
8. Do not operate the unit under unprotected combustible constructions. Use only in well ventilated areas. Do not use in buildings, garages, sheds or other such enclosed areas.

## IMPORTANT NOTES REGARDING FIRE BRICKS

- The fire bricks must be handled with care, as improper or negligent use may lead to damage / breakage.
- The fire bricks must be placed flat on the bottom of the Fireplace or Braai as intended use.
- Cleaning ash from the fire bricks must be done with a soft bristle brush.
- No Chemicals or accelerants may be used on the fire bricks.
- fire bricks must be left to naturally cool after use, as accelerated cooling may lead to breakage / damage.

# WHEW,

We feel much better knowing you're safer for having taken the time to go through that first section thoroughly.

Now, let's get on with putting your Megamaster Built-in Fireplace together so you can enjoy and cosy up with some friend and family.

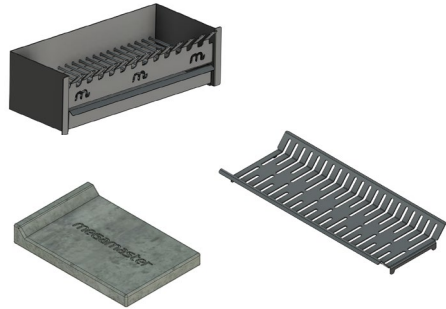
***megamaster***<sup>™</sup>  
TOGETHER, MADE BETTER<sup>™</sup>

## Features:

### 1. Grate and Ash pan

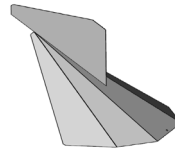
The grate and ash pan provide an easy to use, quick start element to your unit, the ash pan can be easily removed to clean it. These two parts are working elements in the fireplace thus, may need to be replaced when worn. NB for wood burning only, no coal or anthracite.

The 750 Core Fireplace comes with a newly designed basket grate and 3x heat- resistant fire brick.



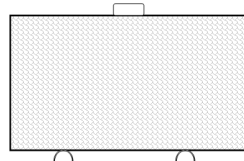
### 2. Rotating Cowl (Optional)

The rotating cowl is not included with this product but can be purchased separately, the cowl prevents rainwater from entering the chimney and aids with the draft of the chimney. You may also choose to build your own cowl / chimney outlet according to the design of your home. Product includes two stainless steel ball bearings and bolt-on base.



### 3. Fire Screen (Optional)

A fire screen may be purchased to complement your unit, it will prevent embers or sparks emitted from the fireplace from falling onto your carpet, laminated wooded floors or tiles. It will also provide some safety when young children are around, although you should never leave young children unoccupied when using this unit.



**Optional Extras are available from your nearest retailer or directly from MegaMaster. Please visit our website for a full range of Fireplace accessories - [www.megamaster.co.za](http://www.megamaster.co.za)**

**Replacement Grate and ash pan - Cowl and Base - Flue Pipes - 45 Degree Bends**

### Did you make sure everything's in the box? Great!

We go out of our way to ensure everything is perfect, but in the unlikely event that anything is out of place, please don't hesitate to contact our friendly customer service before you continue. Please report within 7 days of purchase.

**The smallest things can be really important.**

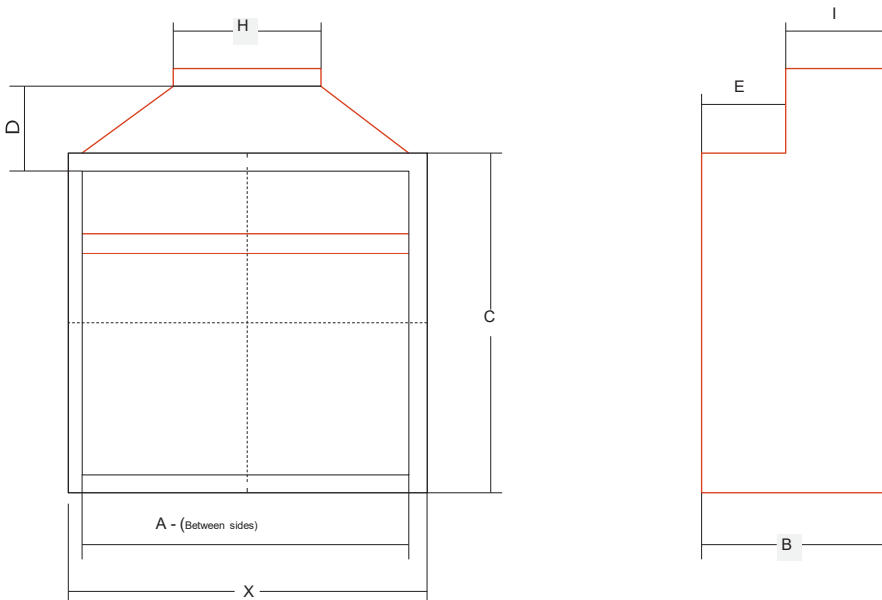
# **MAKE YOUR ASSEMBLY EXPERIENCE EVEN BETTER, WE RECOMMEND YOU:**

Play your favourite album in the background, make yourself something hot and invite some friends over, as it won't be long before your Megamaster Built-in Fireplace is ready to start making your good times even better!

## **CONTACT A QUALIFIED INSTALLER IF YOU ARE IN NEED OF SOME HELP.**

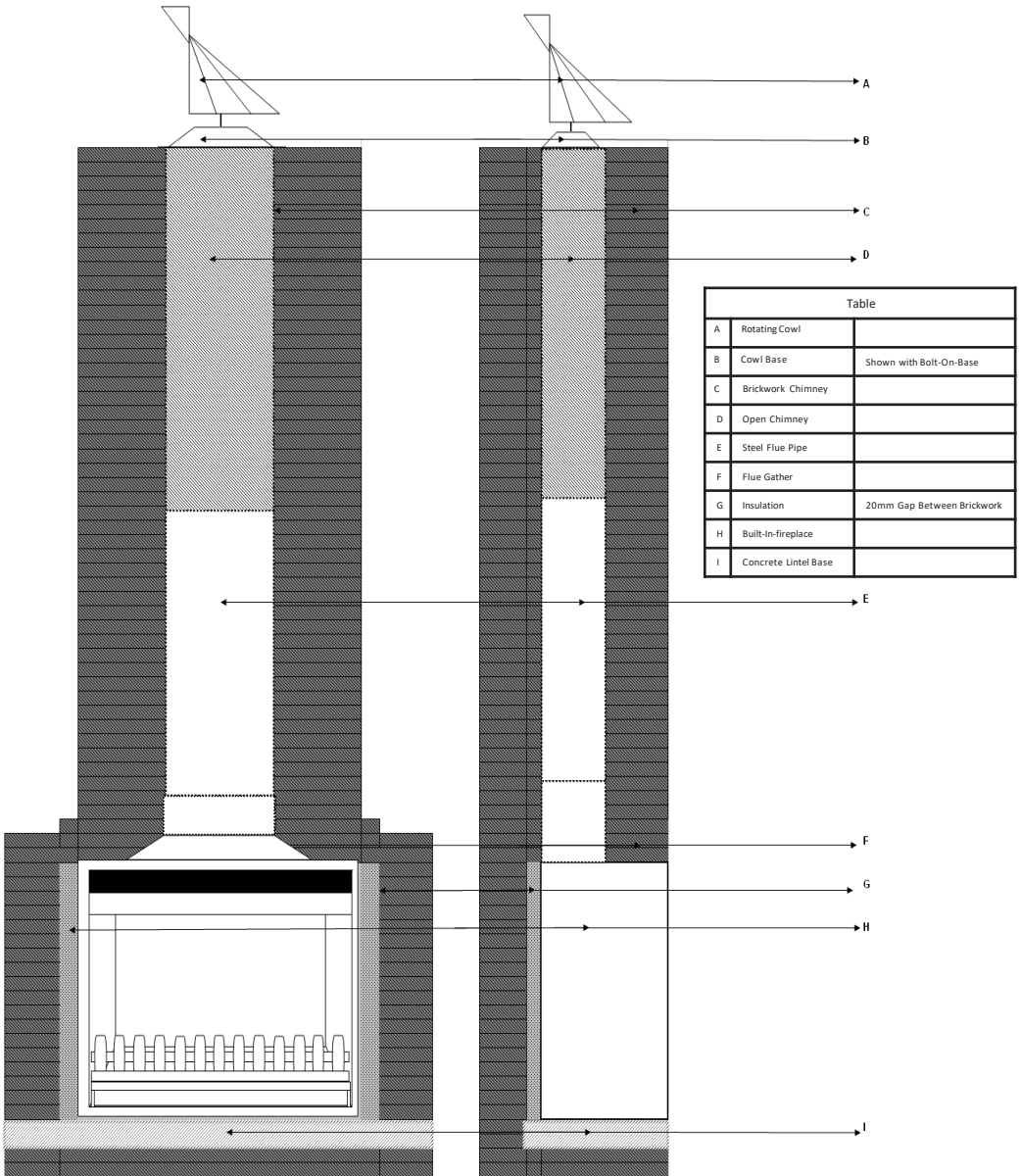
***megamaster***<sup>™</sup>  
TOGETHER, MADE BETTER<sup>™</sup>

Use the following table to construct the brickwork for your Megamaster unit.



Unit :	A	X	B	C	D	E	H	I	Basket grate & ashpan	Rotating cowl & base
<b>550 Built-in Fireplace</b>	550	620	380	740	200	120	300	225	Yes	No
<b>750 Built-in Fireplace</b>	750	820	430	790	200	170	300	225	Yes	No
<b>850 Convection Built-in Fireplace</b>	725	950	500	890	120	160	300	225	Yes	No
<b>750 Core Built-in Fireplace</b>	780	820	430	790	200	170	300	225	Basket grate & fire bricks	No





10 Fig. 1 Typical Installation of Megamaster unit

To protect your interest, be sure to employ a reputable and competent body to do the installation.

## HANDY TIPS/ POINTS TO KEEP IN MIND:

### Refer to Fig. 1

1. Construct brick support walls for the unit to your personal desired height. Concrete lintels can be used for the base support.
2. Position the unit and cover the back, sides and top with insulation, before unit is bricked in. Any type of fire-glass wool or ceiling insulation can be used and will prevent brickwork from overheating and cracking. Not included with this product.
3. To allow for expansion, ensure a gap of 20mm between back and sides of the body of the unit and the brickwork. Chimney height with a minimum of 2.0m is critical for a proper draw. It is recommended that at least one steel flue pipe be installed. The remaining chimney space may be constructed from brickwork. However, you may choose to use more than one flue pipe.
4. The inner dimensions of the chimney must not be less than the flue outlet opening on the top of the unit. Example 230mm X 400mm. The height of the chimney is very important to ensure the correct draw of smoke. The height of the opening of the chimney should be at least 0.5m above the apex of the roof. If the horizontal distance between the chimney opening and the roof apex is more than 3m, the vertical height may be made less. Please note that wind conditions in certain areas may affect the draw of the chimney and the vertical height may need to be extended.
5. Steel flue linings will provide a smooth surface for better draw and protect the brickwork against heat corrosion.
6. Use standard flashing material and procedure to waterproof the roof around the chimney. Not supplied with this product.
7. The flue can be offset to avoid obstructions, providing sufficient support to prevent sagging. 45 Degree bends are available at Megamaster Retailers.
8. A rotating cowl is necessary to prevent down drafts on windy days and will prevent rain from entering the chimney. The chimney and the cowl must be 100 % level and the gap between the lowest part of the cowl and the chimney must be minimal. Rotating cowl and base sold separately.
9. After installation, all exposed parts of the chimney and rotating cowl can be painted with good quality heat resistant black enamel paint.
10. The rotating cowl axle must be greased regularly to avoid rust. The unit is supplied with two stainless steel ball bearings to allow the cowl to rotate freely. Slide these two bearing into the hollow round tube of the base. Grease is not included with this product.
11. Before having your first fire, a normal size fire is to be made and burned until no paint smell remains.

## WARNING



Please read the following instructions carefully before attempting to assemble, operate or install the product. The unit becomes extremely hot and can cause burning. Failure to comply with these instructions may result in serious bodily injury.

**NOTE:** Remove all packaging, including straps, before using the product.

## INSTRUCTIONS BEFORE FIRST USE

### Choose a proper location for a Fireplace:

- **It is recommended/advised to install this unit under cover.**
- Only use this unit in a well-ventilated area. Do not use in a garage, building breezeway, or any other enclosed area.
- Keep the unit on a secure, level surface at all times.
- Do not use unit within 1,5m of any combustible material. Combustible materials include, but are not limited to, wood or treated wood decks, patios, and porches.

## CARE & MAINTENANCE

### CLEANING

- Follow a few basic maintenance instructions to keep your unit looking better for years to come!
- If your unit is subject to a particularly harsh environment, you will want to clean the outside more often.
- Acid rain, chemicals and salt water can cause surface rusting to appear. Megamaster recommends wiping down the outside of your unit with warm soapy water. Follow up with a rinse and thorough drying.
- Do not use sharp objects or abrasive cleaners to clean the surfaces of your unit.
- Clean inside after use for optimum performance of the unit.
- Regularly check cowl and base for leaks. Repair leaks with mutton cloth and paint.

### STORAGE AND RUST PREVENTION

- Do not leave or install your unit out in direct sunlight or rain exposure.
- Polishing or swiping the unit with baby oil will help prevent rust by forming a thin protective layer on the steel.
- Coastal regions are more prone to rust, so it is advised to take extra precaution and check your unit regularly for signs of rust.

## BEFORE CALLING FOR SERVICE

If the unit does not function properly, use the following trouble shooting list before contacting your dealer for service. You may save the cost of a service call.

PROBLEM	SOLUTION
Smoke comes out through the front.	<ul style="list-style-type: none"> <li>• No debris inside flue.</li> <li>• During installation ensure steel flue pipe is installed.</li> <li>• Grease rotating cowl, to ensure rotation.</li> </ul>
Rotating Cowl does not rotate.	<ul style="list-style-type: none"> <li>• Ensure to regularly grease the inside of the tube.</li> </ul>
Fire does not start or struggle to burn.	<ul style="list-style-type: none"> <li>• Clean all embers and dust particles from the inside of Fireplace, to ensure proper air circulation.</li> </ul>
Fire does not “draw” or burn properly, dies after start-up.	<ul style="list-style-type: none"> <li>• Ensure that the damper is working, and that it is in the “open”–position when lighting the fire.</li> </ul>

# LOOK AFTER YOUR MEGAMASTER FIREPLACE AND IT WILL LOOK AFTER YOU.

The best friendships are made better when you spend quality time together.

Make it a lasting friendship by making the effort to follow our care and maintenance guide.

*megamaster*<sup>™</sup>

TOGETHER, MADE BETTER<sup>™</sup>

The manufacturer warrants to the original consumer-purchaser only that this product (*Model Built in Fireplace*) shall be free from defects in workmanship and materials after correct assembly and under normal and reasonable home use for the periods indicated below beginning on the date of purchase. The manufacturer reserves the right to require photographic evidence of damage, or that defective parts be returned, postage and/or freight pre-paid by the consumer, for review and examination. Megamaster obligation is limited to repair, replacement, or depreciated value, at the option of Megamaster.

•5 year **LIMITED warranty** (*\*Does not cover surface corrosion, Discoloration or Rust.*)

•1 year **LIMITED warranty on all removable parts** (*\*Does not cover surface corrosion, Discoloration or Rust.*)

Upon consumer supplying proof of purchase as provided herein, Manufacturer will repair or replace the parts which are proven defective during the applicable warranty period. Parts required to complete such repair or replacement shall be free of charge to you except for shipping costs, as long as the purchaser is within the warranty period from the original date of purchase. Reasonable proof of your date of purchase. The original consumer-purchaser will be responsible for all shipping charges of parts replaced under the terms of this limited warranty. This limited warranty is applicable in South Africa only, is only available to the original owner of the product and is *not transferable*. Manufacturer requires, you should retain your sales receipt and/or invoice. If the unit was received as a gift, please ask the gift-giver to send in the receipt on your behalf, to the below address. Defective or missing parts subject to this limited warranty will not be replaced without registration or proof of purchase. Missing parts needs to be reported within 7 days of purchase. This limited warranty applies to the functionality of the product **ONLY** and does not cover cosmetic issues such as scratches, dents, corruptions or discoloring by heat, abrasive and chemical cleaners or any tools used in the assembly or installation of the appliance, surface rust, or the discoloration of stainless steel surfaces. Surface rust, corrosion, or powder paint chipping on metal parts that does not affect the structural integrity of the product is not considered a defect in workmanship or material and is not covered by this warranty. This limited warranty will not reimburse you for the cost of any inconvenience, food, personal injury or property damage. If an original replacement part is not available, a comparable replacement part will be sent. You will be responsible for all shipping charges of parts replaced under the terms of this limited warranty.

#### MANUFACTURER WILL NOT PAY FOR:

- Service calls to your home.
- Repairs when your product is used for other than normal, single-family household or residential use.
- Damage resulting from accident, alteration, misuse, lack of maintenance/cleaning, abuse, fire, flood, acts of God, improper installation, and installation not in accordance with electrical or plumbing codes or misuse of product.
- Any food loss due to product failures.
- Replacement parts or repair labor costs for units operated outside South Africa.
- Pickup and delivery of your product.
- Postage fees or photo processing fees for photos sent in as documentation.
- Repairs to parts or systems resulting from unauthorized modifications made to the product.
- The removal and/or reinstallation of your product.
- Shipping cost, standard or expedited, for warranty/non warranty and replacement parts.

#### DISCLAIMER OF IMPLIED WARRANTIES: LIMITATION OF REMEDIES

*Repair or replacement of defective parts is your exclusive remedy* under the terms of this limited warranty. Manufacturer will not be responsible for any consequential or incidental damages arising from the breach of either this limited warranty or any applicable implied warranty, or for failure or damage resulting from acts of God, improper care and maintenance, grease fire, accident, alteration, replacement of parts by anyone other than manufacturer, misuse, transportation, commercial use, abuse, hostile environments (inclement weather, acts of nature, animal tampering), improper installation or installation not in accordance with local codes or printed manufacturer instructions.

THIS LIMITED WARRANTY IS THE SOLE EXPRESS WARRANTY GIVEN BY THE MANUFACTURER. NO PRODUCT PERFORMANCE SPECIFICATION OR DESCRIPTION WHEREVER APPEARING IS WARRANTED BY MANUFACTURER EXCEPT TO THE EXTENT SET FORTH IN THIS LIMITED WARRANTY. ANY IMPLIED WARRANTY PROTECTION ARISING UNDER THE LAWS OF ANY STATE, INCLUDING IMPLIED WARRANTY OF MERCHANTABILITY OR FITNESS FOR A PARTICULAR PURPOSE OR USE, IS HEREBY LIMITED IN DURATION TO THE DURATION OF THIS LIMITED WARRANTY.

Neither dealers nor the retail establishment selling this product has any authority to make any additional warranties or to promise remedies in addition to or inconsistent with those stated above. Manufacturer's maximum liability, in any event, shall not exceed the documented purchase price of the product paid by the original consumer. This warranty only applies to units purchased from an authorized retailer and or re-seller.

If you wish to obtain performance of any obligation under this limited warranty, you should write to:

**Megamaster Customer Service**

**PO Box 15, Woodlands,0072, South Africa**

*All consumer returns, parts orders, general questions, and troubleshooting*

*assistance can be acquired by calling 010 001 6342 or sending an e-mail to [service@megagroup.co.za](mailto:service@megagroup.co.za)*