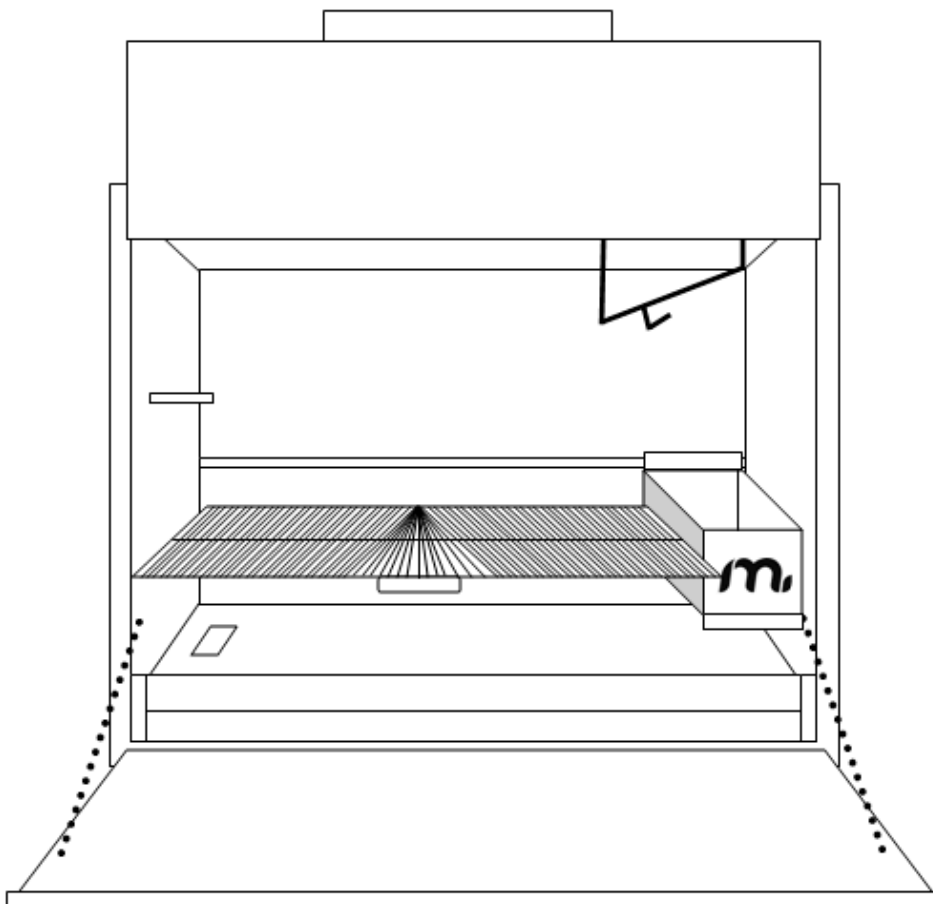


MEGAmaster

BUILT – IN BRAAI
MODELS: 750, 1000, 1200, 1500, Plasma 750 & 1000



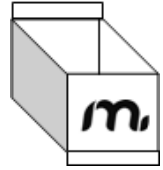
INSTALLATION INSTRUCTIONS & USER MANUAL

Actual product may differ slightly from the picture above
Megamaster products and factories comply with the Quality Management System standards required by all major retailers in South Africa.

Features (Product includes a light fitting, brass knob and two stainless steel ball bearings)

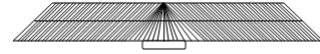
1. Embermaker (Deluxe Braais Only)

The Embermaker is used to start your fire quickly. Place your wood inside and light the fire, the hot embers will drop through the grate onto the ash pan below. The Embermaker is mounted onto the rear guide rail in the braai, it can be moved to the centre of the braai to accommodate two smaller grids. The small bolt at the back is used to adjust the level of the Embermaker.



2. Nickel-Plated Grid

One grid is included with this braai and smaller grids can be purchased to use in conjunction with the Embermaker in the centre of the braai.



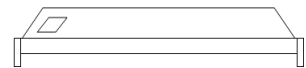
3. Light Fitting

A ceramic light fitting is included with the braai. It is mounted on the left hand side of the braai in the holes provided, electrical wiring must be provided during the installation process. It uses standard bayonet light bulbs.



4. Heavy Duty Ash Pan

The braai has a heavy-duty ash pan included, you may make your fire directly on top of this. It has a hole on the left for scooping ash into the optional ashtray, an oven draw is also available. Ashtray and oven draw not optional for plasma braais.



5. Potjie Hook

The Potjie hook can accommodate a No ¼ to No 3 Potjie pot. It is located in the top right corner of the braai.



Optional Extras are available from your nearest retailer or directly from Megamaster. Please visit our website for a full range of braai accessories - www.megamaster.co.za

Ashtray - Oven Draw - Small Grids - Replacement Embermaker - Flue Pipes - 45 Degree Bends

Sizes and Measurements (Ignore Measurements J & K)

Use the following table to construct the brickwork for your Megamaster Braai.

	Width	Depth	Height	Flue Gather Height	Flue Gather Depth	Flue Size	
	A	B	C	D	E	H	I
750 Standard Built-in Braai	760	510	810	300	200	300	230
1000 Standard Built-in Braai	1010	510	810	300	250	400	230
1000 Deluxe Built-in Braai	1010	510	810	300	250	400	230
1200 Deluxe Built-in Braai	1210	510	810	300	250	600	230
1500 Deluxe Built-in Braai	1510	510	810	300	250	600	230
750 Plasma Built-In Braai	750	460	770	300	200	300	230
1000 Plasma Built-In Braai	1000	460	770	300	200	400	230

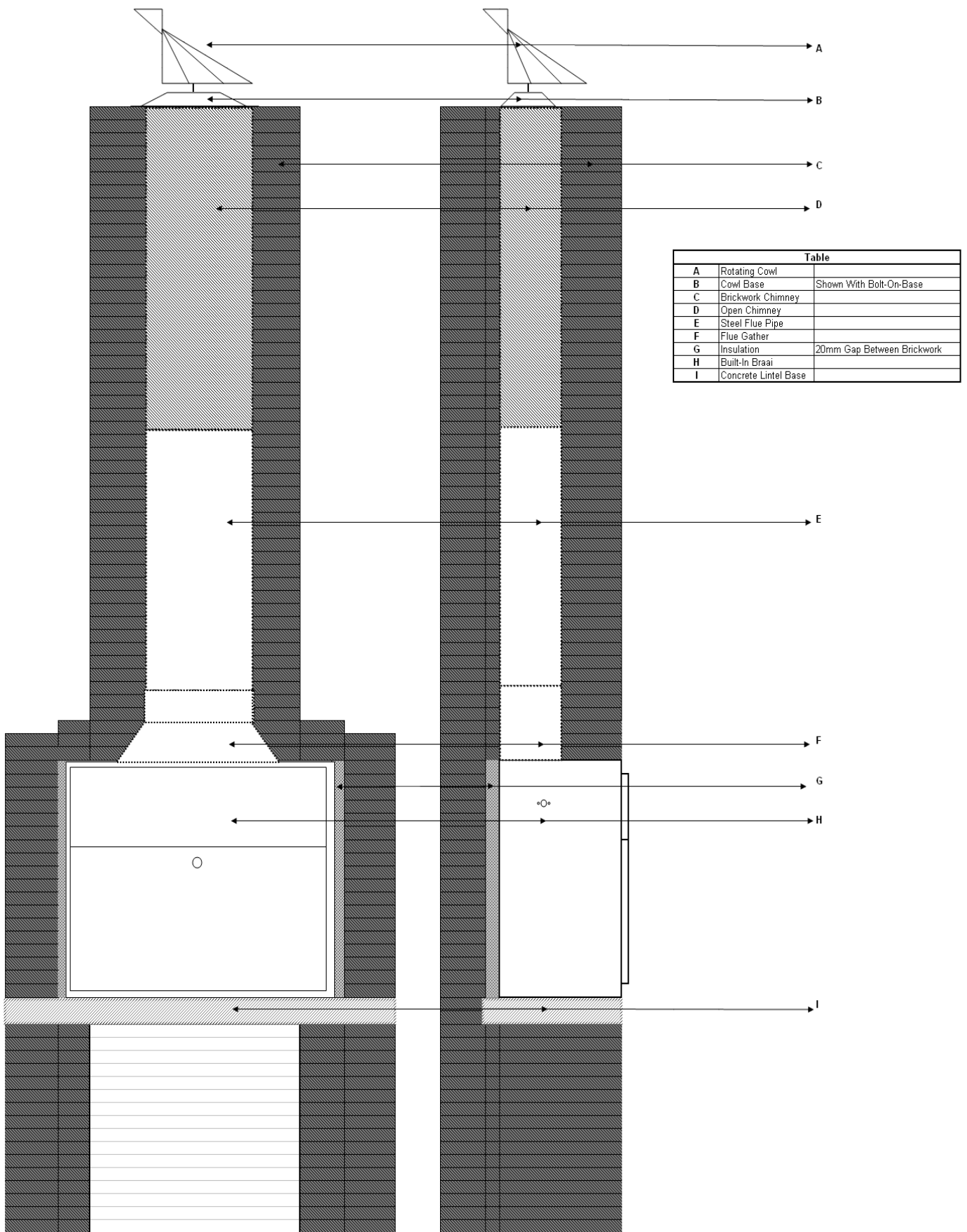


Fig.1 Typical installation of a Megamaster Built-In Braai

This product has a 15 year limited warranty, which extends to the overall construction and workmanship of the product. Rust, paint discoloration, various parts and incorrect installation are not covered by this warranty. To protect your interest, be sure to employ a reputable and competent body to do the installation. Points to keep in mind are:

Refer to Fig. 1

1. Construct brick support walls for the unit to your personal desired height. Concrete lintels can be used for the base support.
2. Position the unit and cover the back, sides and top with insulation, before unit is bricked in. Any type of fire-glass wool or ceiling insulation can be used. Not included with this product.
3. To allow for expansion, ensure a gap of 20mm between back and sides of the body of the unit and the brickwork.
4. Also make provision for electrical wiring for the light fitting on the left side of the braai in the holes provided.
5. Chimney height with a minimum of 2.0m is critical for a proper draw. It is recommended that one steel flue pipe be installed. The remainder of the chimney may be constructed from brickwork. You may choose to use more than one flue pipe.
6. The inner dimensions of the chimney must not be less than the flue outlet opening on the top of the unit. Example 230mm X 400mm.
7. Steel flue linings will provide a smooth surface for better draw and protect the brickwork against heat corrosion.
8. Use standard flashing material and procedure to waterproof the roof around the chimney. Not supplied with this product.
9. The flue can be offset to avoid obstructions, providing sufficient support to prevent sagging. 45 Degree bends are available at Megamaster Retailers.
10. A rotating cowl is necessary to prevent down drafts on windy days and will prevent rain from entering the chimney. The chimney and the cowl must be 100 % level and the gap between the lowest part of the cowl and the chimney must be minimal. A "bolt-on base" is supplied with the unit.
11. After installation, all exposed parts of the chimney and rotating cowl can be painted with good quality heat resistant black enamel paint.
12. The rotating cowl axle must be greased regularly to avoid rust. The unit is supplied with 2 x stainless steel ball bearings to allow the cowl to rotate freely. Slide these two bearing into the hollow round tube of the base. Grease is NOT included with this product.
13. The brass knob supplied can be fitted by fastening the screw supplied from behind the door panel into the hole on the rear of the knob. The Plasma models have a door knob pre-fitted.
14. Before having your first fire, a normal size fire is to be made and burned until no paint smell remains.

For further information of installation and other installation options please feel free to download the full installation manual from our website www.megamaster.co.za

NB: This is a mild steel product and the warranty does not extend to rust or paint discolouration. Megamaster will not accept any claims against rust occurrence after installation has taken place, regardless of the date of installation. Owners are advised to take the necessary precautions to protect their product against rust by regularly checking the installation and repainting areas were necessary. Coastal residences are advised to take extra precaution against rust in humid and coastal regions.