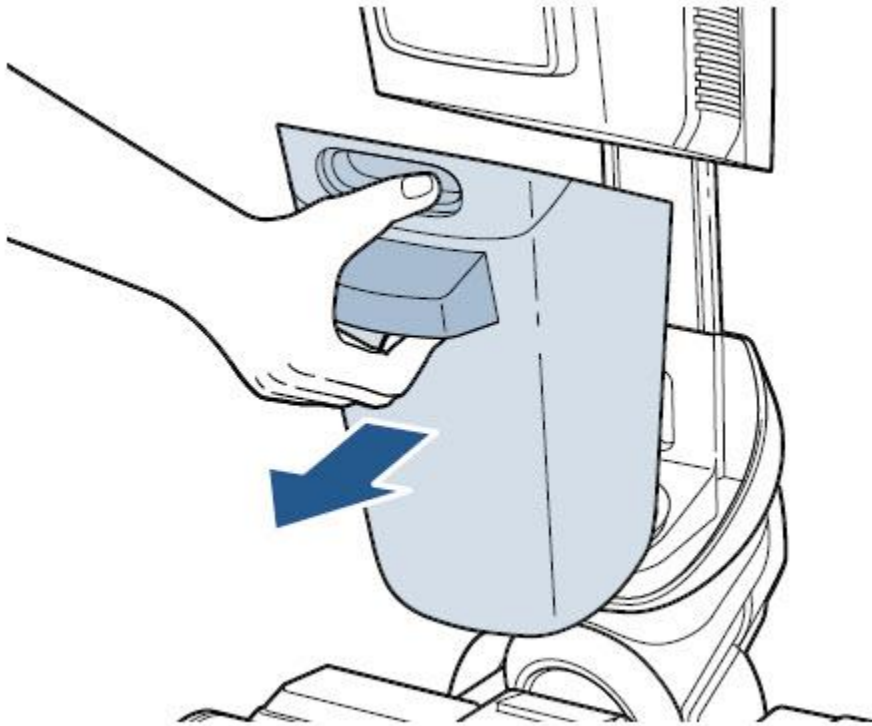


# CrossWave X7 Cleaning the dirty water tank | Support

If orange dirty water tank indication light is illuminated, but the dirty water tank is not full, follow these steps below:

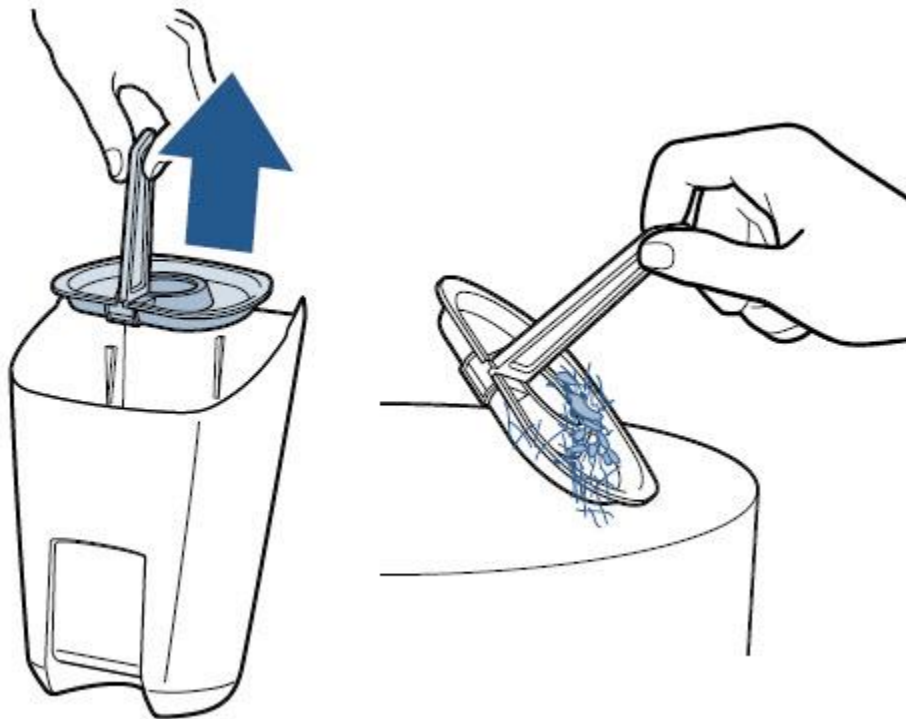
- Turn machine off
- Remove dirty water tank by pressing down on button on top of tank, grab front handle and pull tank out



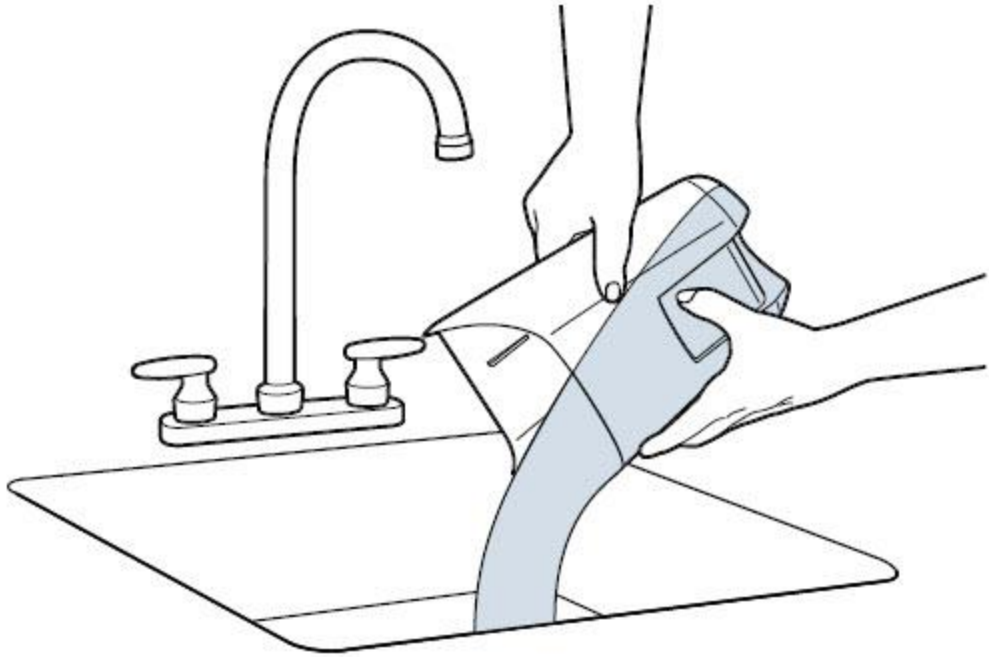
- Grasp top of tank from sides and pull up to remove tank lid



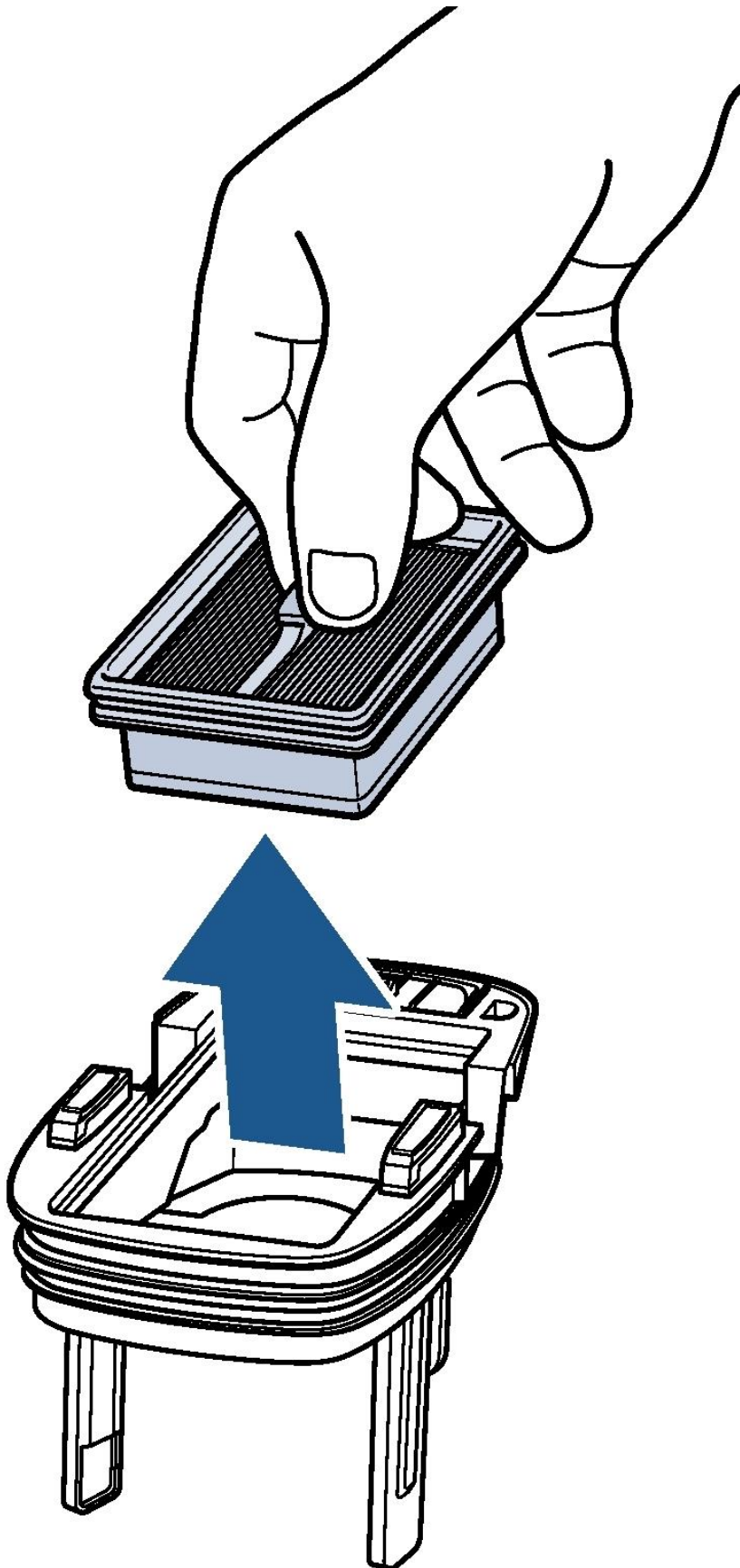
- Remove strainer from tank
  - Discard debris & rinse



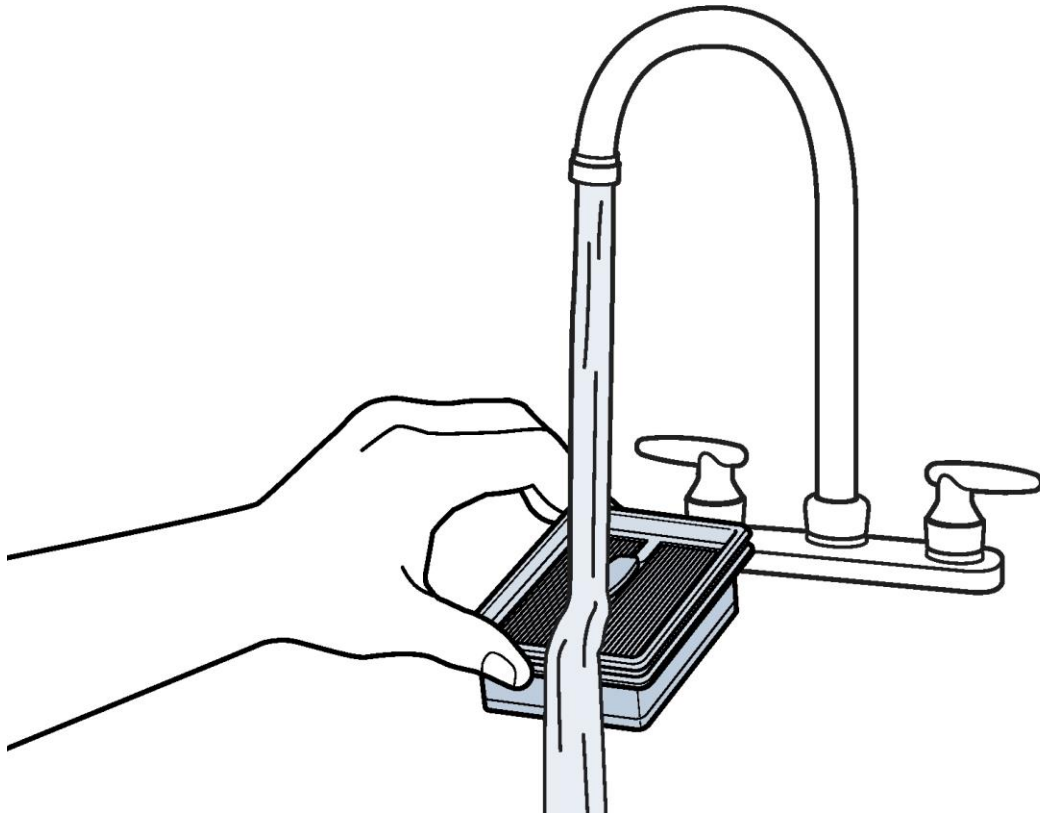
- Pour dirty water tank into sink and rinse



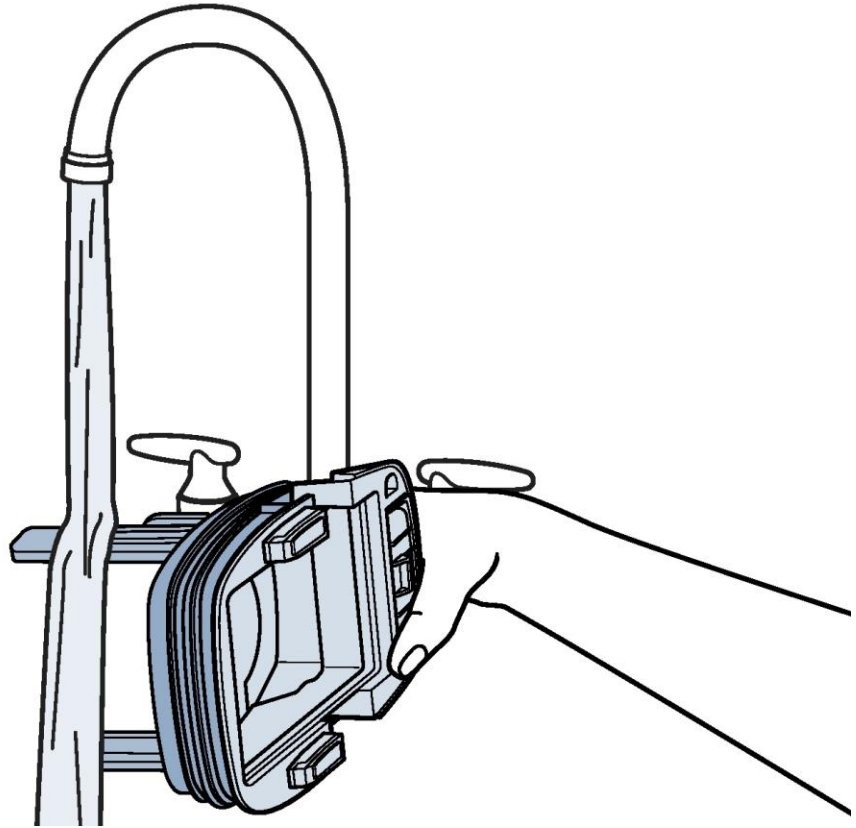
- Remove filter from the tank lid



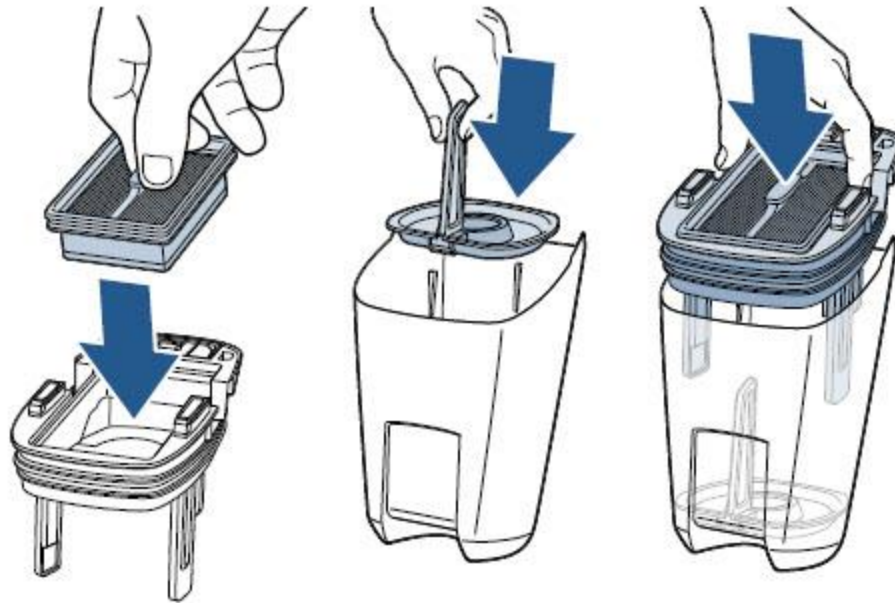
- Hand wash filter & screen with warm water, remove debris
  - Allow 24 hours for filter to fully dry before reassembling



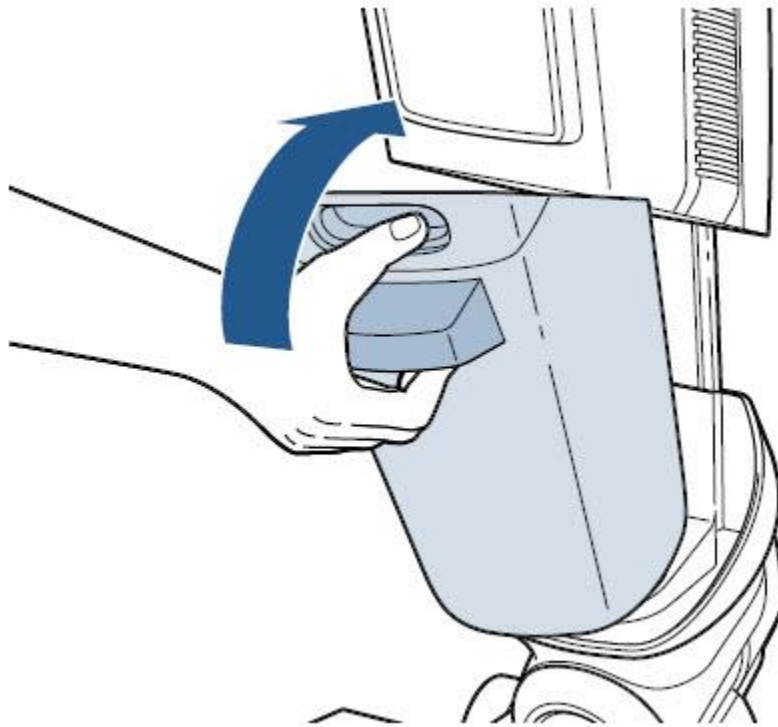
- Rinse dirty water tank lid
- Clean float sensors on the bottom and top of dirty water tank lid with damp cloth or napkin
  - Remove all visible debris and let completely dry before reassembling



- Clean the gold sensors on the underbody of the machine where the top of the dirty water tank connects
- Once all parts have dried - put filter back into dirty water tank lid, strainer back into dirty water tank, and dirty water tank lid back onto the tank



- Insert dirty water tank back into the machine inserting the bottom of the tank first, pivot the top toward the machine until it clicks into place



- If orange dirty water tank is full light continues to be illuminated after the dirty water tank and sensors have been cleaned, please **Contact Us**