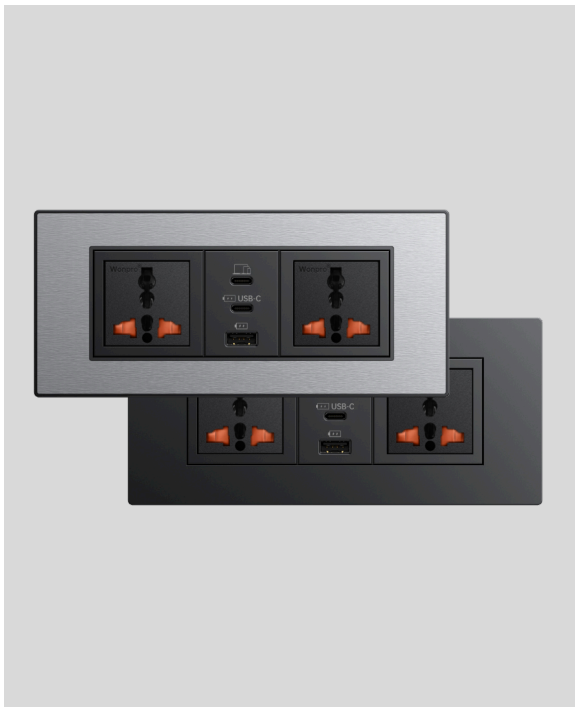


PowerHub Pro | TA-7545U



Products Covered By This Installation Guide

PowerHub Pro Universal takes the PowerHub range to a new level. The use of the latest GaN technology enables USB charging across 3 outlets up to an amazing 50 watts combined with 2 universal AC outlets.

Key Features

- Provides guests with 2 easy-to-find universal electrical outlets and 3 USB charge ports.
- Designed for installing flush into furniture, millwork, or case goods.
- Fast-charging USB ports support a wide range of portable devices including laptops, tablets and smartphones.
- UL Certified to UL1310.

PowerHub Pro Universal Part Numbers

TA-7545U-JPN3	Black PowerHub Pro Universal, separate 3.5m rear Japan power cable.
TA-7545U-UKN3	Black PowerHub Pro Universal, separate 3.5m rear UK power cable.

Specifications

Input: Integrated C14 fly lead (approx. 8in [200mm]) to accept country specific power cable. Requires 1 mains outlet (125V-250V/10A).

Outputs: 2 x Universal AC outlets, 10A max. shared.
3 USB Ports (2 x USB-C, 1 x USB-A) total 50W max.

One port charging:

USB-C1	PD3.0: 5V3A/9V3A/15V3A/20V2.25A, 45W, or
USB-C2	PD3.0: 5V3A/9V3A/15V3A/20V2.25A, 45W, or
USB-A	5V2.4A, 12W.

Two ports charging:

USB-C1	PD3.0: 5V3A/9V3A/15V2A/20V1.5A, 30W, and
USB-C2	PD3.0: 5V3A/9V2.22A, 20W, or
USB-C1	PD3.0: 5V3A/9V3A/15V2A/20V1.5A, 30W, and
USB-A	5V2.4A, 12W, or
USB-C2	5V3.4A, 17W.
USB-A	

Three ports charging:

USB-C1	PD3.0: 5V3A/9V3A/15V2A/20V1.5A, 30W, and
USB-C2	5V3.4A, 17W.
USB-A	

Safety: USB over current/voltage/temperature and short circuit protection.
UL Certified to UL1310. FCC Part 15b.

Important Safety Instructions

Read these instructions carefully before attempting any installation. Follow all instructions and heed all warnings. These instructions should be kept for future reference.

- This equipment must be securely attached to furniture in strict accordance with these installation instructions.
- This equipment is designed for indoor use only.
- Only use with attachments and accessories as specified by the manufacturer.
- The mains plug used to disconnect this equipment from its power source must be readily accessible at all times.
- Ensure the power cord is uncoiled before installation.
- Protect the power cord from being walked on or pinched particularly at plugs, convenience receptacles and the point where they exit from the equipment.
- The power cord must be plugged into a mains socket outlet with protective earthing.
- Clean only with a dry cloth.
- Refer all servicing to qualified service personnel. Servicing is required when the equipment has been damaged in any way, for example if the power supply plug or cord is damaged, liquid has been spilled or objects have fallen into the equipment, the equipment has been exposed to rain or moisture, does not operate normally or has been dropped or damaged.
- Unplug this equipment during lightning storms or when unused for long periods of time.
- Do **NOT** defeat the safety purpose of the grounded plug. If the provided plug does not fit into your outlet consult a qualified electrician to replace the obsolete outlet.
- Do **NOT** install or use this equipment near water.
- Do **NOT** expose this apparatus to rain or moisture.
- Do **NOT** expose to dripping or splashing. No objects filled with liquid such as vases shall be placed on the equipment.
- Do **NOT** install near any heat sources such as radiators, convection heaters or other apparatus such as amplifiers that produce heat.
- Do **NOT** exceed the maximum load of 10 amps.
- This unit **DOES NOT** convert voltage. Always check input voltage is compatible with any connected devices otherwise damage may occur.

Important Safety Instructions (contd.)

- A FPDU is intended to be connected to a permanently installed branch circuit receptacle outlet.
- A FPDU is intended to be mounted to an indoor use portable or stationary furnishing. A FPDU is not intended to serve as fixed wiring of a structure or of fixed furnishings.
- FPDU are not intended to be series connected (daisy chained) to other FPDUs to relocatable power taps or to extension cords.

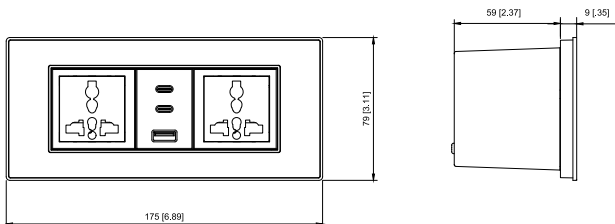
Approval Information

UL Certified UL1310. FCC Part 15b.

What Is Included In The Box

- 1 x PowerHub Pro Universal supplied with separate, country specific, power cable.
- 1 x Black or white trim.
- 1 x Black or white trim with brushed metal finish insert.
- 4 x Wood fixing screws.
- 1 x Installation Guide.

Dimensions



Preparation For Installation

The PowerHub Pro Universal is designed to be installed in furniture. Ensure the location chosen for the equipment complies with the requirements of the "Important Safety Instructions". A cutout will need to be made in the furniture. Other than this the only tools you will need are a medium sized cross head screwdriver.

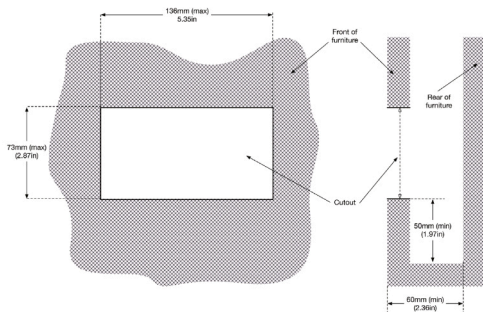
The PowerHub Pro Universal versions can be powered from 125V to 250V. Note, this unit **DOES NOT** convert voltage. Always check input voltage is compatible with any connected devices otherwise damage may occur.

Installation

Before starting installation make sure you have read and understood the "Important Safety instructions". Choose a trim and make sure you have the 4 wood screws and PowerHub Pro Universal body on hand.

Step 1

Confirm the furniture cutout dimension to accommodate the PowerHub Pro Universal is within the limits shown below. Note that in addition to the minimum depth requirement of 60mm (2.36in) there should also be at least 50mm (1.97in) clearance below the unit to allow cabling to exit cleanly.



Step 2

Remove the PowerHub Pro Universal, trims and screws from the box.

Step 3

Attach the supplied power cable to the flying socket at the rear of the PowerHub Pro Universal and then thread the rear power cable through the cutout in the furniture.

Step 4

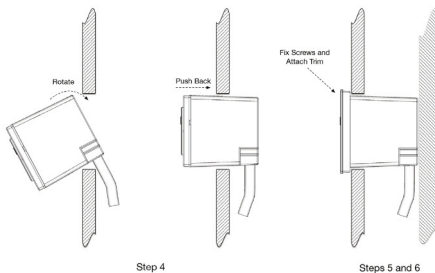
Lean the PowerHub Pro Universal on the bottom of the cutout in the furniture and push it into the cutout by rotating it slightly

Step 5

Fasten the 4 cross head screws to fix the unit into the furniture.

Step 6

Align the selected trim (black or metallic) with the PowerHub Pro Universal ensuring that the 2 small cutouts on the trim are on the bottom. Press firmly and evenly to clip the trim into place.



Step 7

Finally insert the plug on the end of the rear power cable into an appropriate mains outlet.

Installation is now complete.

Additional Information

USB Charging

The PowerHub Pro Universal provides 1 USB-A and 2 USB-C charging ports on the front.

The USB-A port is designed for charging smartphones or tablets.

The USB-C ports can charge smartphones, tablets and laptops that support USB-C. If using multiple ports simultaneously then the top USB-C port will deliver the most power for charging laptops and tablets.

In all cases the combined power output will not exceed 50 watts. See Specifications for full details.

Removing the PowerHub Pro Universal from Furniture

If you need to remove the equipment for any reason, first ensure the equipment is disconnected from the mains power source.

1. Unplug the PowerHub Pro Universal from the mains supply.
2. Use a medium flat blade screwdriver to release 2 clips on the bottom of the trim.
3. The trim can now be gently removed by hand. Be careful not to bend the trim excessively or it may deform or break.
4. Unscrew the 4 cross head screws and carefully withdraw the unit from the furniture being careful not to damage any cables.

Warranty

Please see TeleAdapt *General Sales Terms*¹.

Contact Details

Americas

TeleAdapt Inc
1315 Greg Street
Suite 110
Sparks
NV 89431
USA
Tel: +1 775 355 8585

Asia

TeleAdapt (Hong Kong) Limited
Hong Kong
Kowloon
Tel: +852 2155 1383
Email: hk@teleadapt.com

¹ Available at <https://www.teleadapt.com/pages/legal>



Visit our website at: www.teleadapt.com

TA-7545U-xxxx, PowerHub Pro Universal Installation Guide.
Revision 1.43, 2024-07-03.

All rights reserved. All copyrights and trademarks acknowledged.
Specifications subject to change without notice.