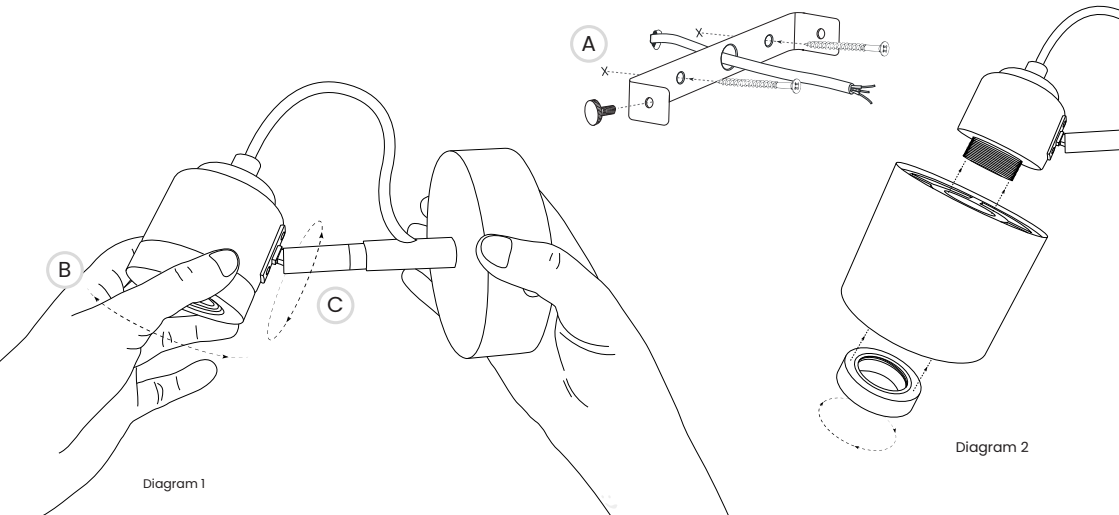


# Spire and Elin Wall Light Installation Instructions



**Only a qualified electrician should assemble the luminaire. If in doubt, consult a suitably qualified electrician. Installation MUST be carried out in accordance and compliance with current building regulations.**

**Ensure the electrical supply is turned OFF at the fuse board.**

1. Identify if there are any hidden pipes or electrical cables in the wall to avoid causing damage or risk of electrical shock during installation. Hold the metal bracket horizontal and centred to the electrical supply wire from the wall and mark the wall through each hole of the bracket (A). Drill two holes where you have marked to attach the mounting bracket. We have included screws and rawl plugs for this, however, you may need to determine the fixing method appropriate to the wall structure (plasterboard fixings for example) and secure the bracket to the wall ensuring it is flat against the wall surface.
2. Connect the light to the electrical supply, hiding excess wire and the connection block in the back plate or wall cavity. Using the small brass thumb turn screws, attach the wooden backplate of the wall light to the metal bracket.
3. **If you have a Spire Wall Light which includes a small lampshade, attach the shade to the bulbholder once the wall light is fixed in place as detailed in diagram 2 above.)** Screw in your chosen light bulb. The light has been designed to work with an E27 LED light bulb, up to a maximum of **25 Watts**.
4. Turn the power supply on to complete installation.

Diagram 1 shows how the Spire and Elin Wall Lights are directional and can be adjusted both up and down (B) and side to side (C).

\*\*\* If the external flexible cable or cord of this luminaire is damaged, it shall be exclusively replaced by the manufacturer or his service agent or a similar qualified person in order to avoid a hazard. \*\*\*

For more information on the installation of your product: [contact@tomraffield.com](mailto:contact@tomraffield.com) +44 (0)1326 722725