

## MediaHub Pro/TA-3365





## Table of Contents

<b>2</b>	Products Covered By This Installation Guide
<b>2</b>	Part Numbers
<b>3</b>	Important Safety Instructions
<b>3</b>	Approval Information
<b>4</b>	What Is Included In The Box
<b>4</b>	Preparation For Installation
<b>5</b>	Installation
<b>7</b>	Additional Information
<b>8</b>	Frequently Asked Questions
<b>11</b>	Specifications
<b>13</b>	Warranty
<b>13</b>	Contact Details

## Products Covered By This Installation Guide

MediaHub Pro is a compact media panel which is compatible with a wide range of hospitality TV entertainment systems. It is part of the market leading MediaHub range.

MediaHub Pro provides an HDMI input, USB Type-C® (USB-C) for charging and playback and USB-A for charging or optional passthrough.

MediaHub Pro also supports Bluetooth for audio playback.

On the rear of the MediaHub Pro there is a DC connector for power, an HDMI output and a micro-connector for optional USB-A passthrough (additional cable required).

### Part Numbers

TA-3365-A-L0 MediaHub Pro. Black, 5V 5A PSU.

TA-3365-W-L0 MediaHub Pro. White, 5V 5A PSU.

TA-3366-W-L0 MediaHub Pro, White, 5V 5A PSU with USB-A passthrough.

## Important Safety Instructions

- Read these instructions carefully before attempting any installation. Follow all instructions and heed all warnings. These instructions should be kept for future reference.
- This equipment must be securely attached to furniture in strict accordance with these installation instructions.
- This equipment is designed for indoor use only.
- Only use with attachments and accessories as specified by the manufacturer, including but not limited to the PSU and mains cable.
- The mains plug used to disconnect this equipment from its power source must be readily accessible at all times.
- The PSU should be installed in a serviceable location such that in the event of failure it can be easily replaced.
- The PSU will generate heat and should therefore be installed in a well ventilated location. Failure to provide adequate ventilation will mean the PSU will be hot and its operational life will be reduced.
- Ensure the mains power cord is uncoiled before installation.
- Protect the mains power cord from being walked on or pinched particularly at plugs, convenience receptacles and the point where they exit from the equipment.
- Clean only with a dry cloth.
- Refer all servicing to qualified service personnel. Servicing is required when the equipment has been damaged in any way, for example if the power supply plug or cord is damaged, liquid has been spilled or objects have fallen into the equipment, the equipment has been exposed to rain or moisture, does not operate normally or has been dropped or damaged.
- Unplug this equipment during lightning storms or when unused for long periods of time.
- Do NOT modify this equipment in any way, doing so may invalidate any statutory approvals and/ or warranty.
- Do NOT install or use this equipment near water.
- Do NOT expose this apparatus to rain or moisture.
- Do NOT expose to dripping or splashing. No objects filled with liquid such as vases shall be placed on the equipment.
- Do NOT install near any heat sources such as radiators, convection heaters or other apparatus such as amplifiers that produce heat.

## Approval Information

MediaHub Pro is FCC and CE certified.

## What Is Included In The Box

- 1 x MediaHub Pro MiniClip compatible module.
- 1 x MediaHub Pro faceplate.
- 1 x 50mm MiniClip carrier.
- 1 x black or white trim
- 1 x black or white trim with brushed metal insert.
- 1 x 5V/5A power supply.
- 1 x Installation Guide.

### Note:

In addition to the items included in the box a 2 metre IEC 60320 C7 mains cable with a mains plug suitable for the country in which the MediaHub Pro is to be installed will be provided separately.

## Preparation For Installation

The MediaHub Pro is designed to be installed in furniture. Ensure the location chosen for the equipment complies with the requirements of the "Important Safety Instructions".

A cutout will need to be made in the furniture. Other than this the only tool you will need is a medium sized cross head screwdriver.

Cutout dimensions are given in the "Installation" section of this guide.

In addition to the items supplied with the MediaHub Pro you will also need:

- an HDMI cable (see HDMI Cables below).

The power supply (PSU) requires a standard mains outlet which is easily accessible in the event that the PSU needs to be disconnected from the mains. The PSU itself must be also be sited such that it is easily accessible and can be readily serviced or replaced in the event of failure. The DC cable from the PSU is 1.8 metres long. It must not be extended as this could affect product performance and will invalidate warranty and product approval. The PSU should be in a ventilated space to avoid a build up of heat which can reduce PSU life.

## TVs and System Integrators

Before installation you should be satisfied that the TV model selected and/or system integrator is configured to work with the MediaHub Pro and that all necessary control mechanisms (ie CEC) and cabling are defined and in place. You can find more information about this in the "Additional Information" section or contact TeleAdapt (see Contact Details) for help and advice.

## HDMI Cables

It is recommended to use certified High Speed HDMI cables as a minimum with MediaHub Pro. If you plan to use 4K, especially with higher frame rates, HDR or expanded colour spaces then you should use certified Premium High Speed HDMI cables instead.

Please contact TeleAdapt (see Contact Details) about a range of suitable cables and right angled adaptors for use if rear space is restricted.

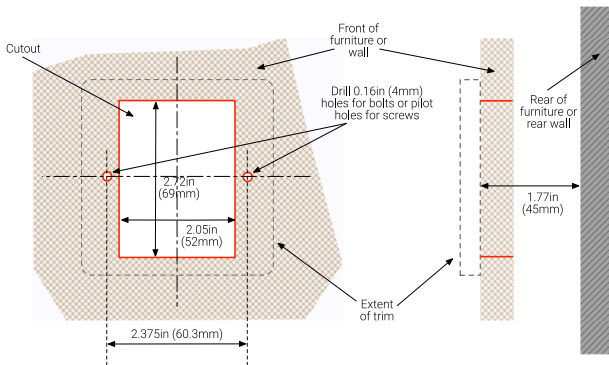
## Installation

Before starting installation make sure you have read and understood the "Important Safety instructions" and the "Preparation for Installation" sections. These instructions assume you are using the supplied MiniClip carrier. MediaHub Pro is compatible with many other clip-in solutions that support the 'Euro Clip' standard.

### Step 1

Confirm the furniture cutout dimension to accommodate the MediaHub Pro is within the limits shown below.

Note that in addition to the minimum depth requirement of 45mm (1.77 in) assumes use of a right angled adaptor, otherwise additional rear clearance may be needed.



### Step 2

Ensure HDMI and DC power are presented at the cutout and that you have sufficient slack to allow connection to the rear connectors on MediaHub Pro module. Ensure the PSU is NOT plugged into the mains at this point.

**IMPORTANT NOTE:** The PSU must be sited such that it is easily accessible and can be readily serviced or replaced in the event of failure. The DC cable from the PSU is 1.8 metres long. It must not be extended as this may affect product performance and will invalidate product warranty and approval. The mains plug for the PSU should be easily accessible so it can be removed should it be necessary to isolate the PSU from the mains supply.

### Step 3

Remove the MediaHub Pro module, faceplate, trims and PSU from the box.

### Step 4

Assemble the MediaHub Pro by clipping the MediaHub Pro module into the rear of the MiniClip carrier and then clip the MediaHub Pro faceplate onto the front of the MediaHub Pro module..

### Step 5

Connect the HDMI cable from the TV to the HDMI socket on the rear of the MediaHub Pro module.

### Step 6

Ensure that the PSU is NOT plugged into the mains and plug the right-angled DC connector from the PSU into the matching connector on the rear of the MediaHub Pro module.

### Step 6

Use cable ties (supplied) to anchor the HDMI and PSU cables to the securing points provided at the top and bottom of the rear holding of the MediaHub Pro module.

### Step 7

Carefully rotate the MediaHub Pro assembly into the prepared cutout ensuring that the rear cables are not snagged, pinched or deformed. Fix the MediaHub Pro assembly to the furniture using either the wood screws or the bolts, washers and nuts provided. Take care that the screws or bolts do not damage the cables. Ensure the MediaHub Pro assembly is straight and flush fitting.



## Step 8

Snap on the desired trim (Black or Metallic) ensuring the cutouts to allow the trim to be released are on the bottom.

## Step 9

Mains power can now be applied to the PSU.

## Additional Information

### HDMI Input

The HDMI input on the MediaHub Pro is suitable for connecting a range of HDMI sources. The resolutions supported will be determined by the TV but cannot exceed 2160p60. The MediaHub Pro does not explicitly support 3D formats although, depending upon the TV, 3D side-by-side and 3D top-and-bottom signals may be supported. 3D frame-packing is not supported.

The HDMI input will generate an auto-switch event when it detects +5V from the HDMI source (when a source is plugged in). CEC from the source device is not supported by the MediaHub Pro nor is it passed to the TV. This prevents undesirable side effects that could otherwise be introduced by guest devices.

### USB-C

A USB-C port is provided for charging and video playback. USB Power Delivery (PD) is supported to 5V/3A along with video playback at up to 2160p60 (4K).

Simultaneous charging and video playback is supported.

### USB-A

The USB A port is configured for high current charging and is suitable for charging with most mobile phones and tablets. Optionally passthrough data can also be supported. A special cable (not supplied) is required, please contact TeleAdapt for further information.

### Bluetooth

The MediaHub Pro supports Bluetooth audio streaming using A2DP. This profile is commonly supported by most smart phones, tablets and laptops and will allow audio files to be streamed and played back via the MediaHub Pro to the TV.

To initiate pairing press the Bluetooth button for about 3 seconds, the

button will flash slowly. Under the Bluetooth settings on the mobile device or laptop look for a device called "MediaHub" and connect to it.

## Removing the MediaHub Pro from Furniture

If you need to remove the equipment for any reason please use the following instructions.

1. First ensure the PSU is disconnected from the mains power source.
2. Carefully use a medium flat blade screwdriver to release 2 clips on the bottom of the trim.
3. The trim can now be gently removed by hand. Be careful not to bend the trim excessively or it may deform or break.
4. Unscrew the 2 screws or bolts and carefully withdraw the unit from the furniture being sure not to damage any cables.
5. Cut any cable-ties securing the cables to the main unit then disconnect the rear cables to release the MediaHub Pro assembly.

## Frequently Asked Questions

### *Connecting Mobile Devices for Media Playback*

- Q Which mobile devices can I connect to the MediaHub Pro?  
A Any mobile device with an HDMI output, or any mobile device that has an HDMI output adapter (for example Apple iPhones and iPads support HDMI output using the optional "Digital AV Adapter" available at the Apple Store).
- Q Can I connect a device to the USB-C port for video playback?  
A Yes. If your source device (laptop, tablet, smartphone) supports video playback over USB-C, then you can plug it into MediaHub Pro and playback video.
- Q My laptop does not have an HDMI port. How do I connect?  
A If your laptop has USB-C then it can be connected directly to MediaHub Pro. For older laptops without USB-C or HDMI then an additional adapter to convert to HDMI may be required.

### *Bluetooth Audio*

- Q How does the Bluetooth feature work?  
A Any mobile device that has Bluetooth Audio (Almost all phones, and tablets) can be simply paired with the MediaHub Pro, and once paired all audio selections will play wirelessly through the MediaHub Pro to the TV speakers.
- Q How do I pair the Bluetooth on my phone with the MediaHub Pro?  
A This works just like Bluetooth headsets, Bluetooth speakers, and automobile hands free Bluetooth pairing. Press the Bluetooth button

on the MediaHub Pro to put the MediaHub Pro into pairing mode (the blue light will blink). Now enter the Bluetooth menu on your phone or tablet and find "MediaHub" in the list of Bluetooth devices. Click on "MediaHub" and wait for the pairing to complete. When complete the light on the MediaHub Pro will turn solid blue indicating your device is paired.

### *Connecting Mobile Devices for Charging*

- Q Which devices can I charge on the MediaHub Pro?  
A Any mobile device or accessory that charges from a "standard" USB port will charge.
- Q How much power do the USB ports supply?  
A The USB-C port supports 5V/3A (Power Delivery). The USB-A port supports charging at 5V/1.5A.

### *Connecting the MediaHub Pro to the TV*

- Q What is automatic input switching?  
A It's when you connect an audio or video device to the MediaHub Pro and the TV automatically switches from the TV channel to the connected device - and also switches back to the TV channel when the device is disconnected.
- Q What is CEC?  
A CEC stands for Consumer Electronics Control. It is a feature that is available on most newer TVs. MediaHub Pro works with this CEC feature to automatically switch the inputs on the TV. The auto-switching controls happen over the HDMI cable connection (no extra control cable required).
- Q Does my TV support CEC?  
A The TV specification should list whether CEC is supported or not. However many manufacturers do not refer to CEC directly but may instead use a brand name. Examples are AnyNet+, SimpLink, VieraLink, EasyLink, Bravia Sync, HDMI-CEC or Aquos Link. This list is not exhaustive so it is worth checking with your TV manufacturer if you are not sure. If the TV is HTNG CEC compliant then this is sufficient.
- Q What if my TV does not support CEC, but I really want automatic input switching?  
A Depending on the model of TV - there may be other control ports for automatic input switching that can be utilised. Contact TeleAdapt to find out the control options available for your TV model.
- Q What cable connections are required to use MediaHub Pro?  
A Just an HDMI cable from MediaHub Pro to the TV and a Power Supply connection to a standard wall outlet.

- Q Does it matter which HDMI input I use for the MediaHub Pro?  
A If using 4K then make sure the input you use on the TV supports higher resolutions. The MediaHub Pro will recognise which HDMI it is connected to and switch the input to which ever HDMI port is used.

#### *Troubleshooting*

- Q My TV says it has the CEC feature, but the input is not automatically switching?  
A CEC is a feature that can be turned on, or off, in the TV's configuration. Please contact your TV company or TeleAdapt for help for accessing the feature in the menu.
- Q The MediaHub Pro does not seem to be responding.  
A Confirm there is a good power connection to the MediaHub Pro.
- Q When I plug a device into the MediaHub Pro the input on the TV automatically switches, but when I unplug the device the TV does not switch back automatically?  
A Some TV models have implemented the CEC feature for switching to the HDMI port, but not for switching back to the TV channel. Please check with TeleAdapt which TV models are support the feature fully.

## Specifications

### Front

Bluetooth button/indicator.  
USB-C for charging and video.  
HDMI for video.  
USB-A for charging and optional passthrough.

### Rear

HDMI to TV.  
DC power socket.  
Micro connector (for optional USB passthrough).  
USB-A function selector switch.

### Connection Requirements

1 x HDMI port on the TV  
1 x AC/mains power outlet  
1 x USB-A host (optional, for USB-A passthrough only)

### Cables, Power Supply

1.8ft (3.5m) HDMI cable (included).  
6ft (1.8m) power supply, country mains cable (included but supplied separately).  
USB passthrough cable (not included, order separately if required)

### Auto TV Switching

Auto TV switching is supported using HDMI-CEC. HDMI-CEC is compatible with most hospitality TV's and VOD systems.

### Video

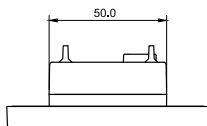
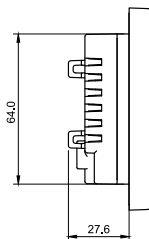
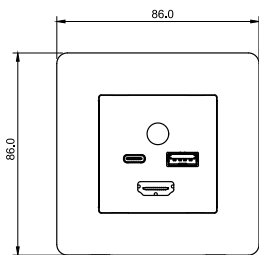
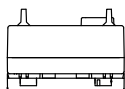
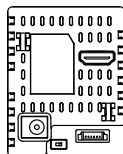
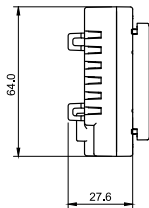
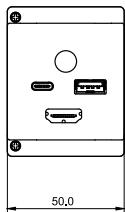
USB-C, max. 4K@60Hz (2160p60).  
HDMI, max. 4K@60Hz (2160p60).

### Bluetooth

Bluetooth audio streaming, A2DP.

### Charging

USB-C, max. 5V/3A, PD.  
USB-A, max. 5V/1.5A.



## Warranty

Please see TeleAdapt "Sales Terms & Conditions" which are available at <http://www.teleadapt.com/teleadapt/sales-terms-conditions.html>

## Contact Details

### Americas

TeleAdapt Inc  
1315 Greg Street  
Suite 110  
Sparks  
NV 89431  
USA  
Tel: +1 775 355 8585

### Asia

TeleAdapt (Hong Kong) Limited  
Hong Kong  
Kowloon  
Tel: +852 2155 1383  
Email: [hk@teleadapt.com](mailto:hk@teleadapt.com)

Visit our website at: [www.teleadapt.com](http://www.teleadapt.com)

TA-3365, MediaHub Pro Installation Guide.  
Revision 14, 2024-09-16.

All rights reserved. All copyrights and trademarks acknowledged.  
Specifications subject to change without notice.