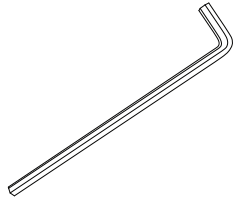


Assembly Instructions Bike Stash Rack

Please Note:

Your Stash Rack is modular and can be assembled to accommodate as few as one bike or as many as five bikes by assembling the number of wheel arms that are needed.

Tools



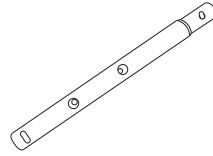
Hex Key

Parts



x2

Frame Tube Ends



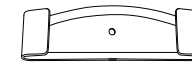
x10

Frame Tubes



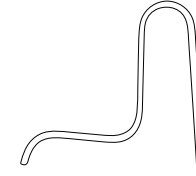
x20

Screws



x5

Wheel Arm Binders

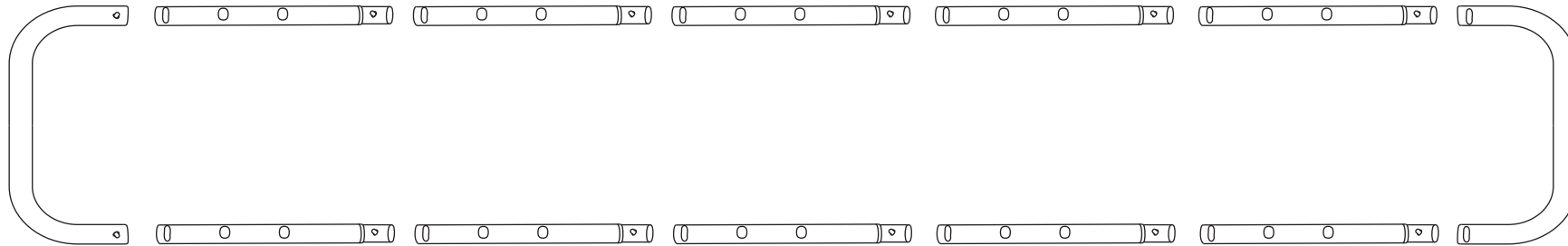


x10

Wheel Arms

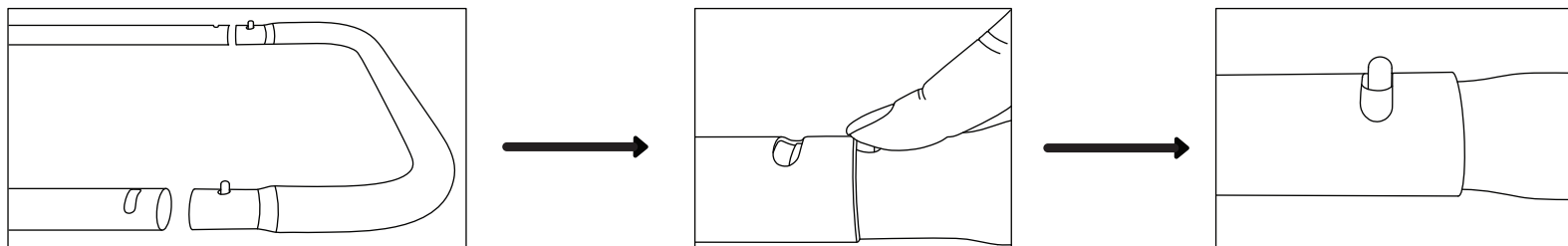
1

To assemble the rack start by piecing together the frame tubes (Five for each side). Make sure the smaller end of the tube matches up to a larger end of the next tube.

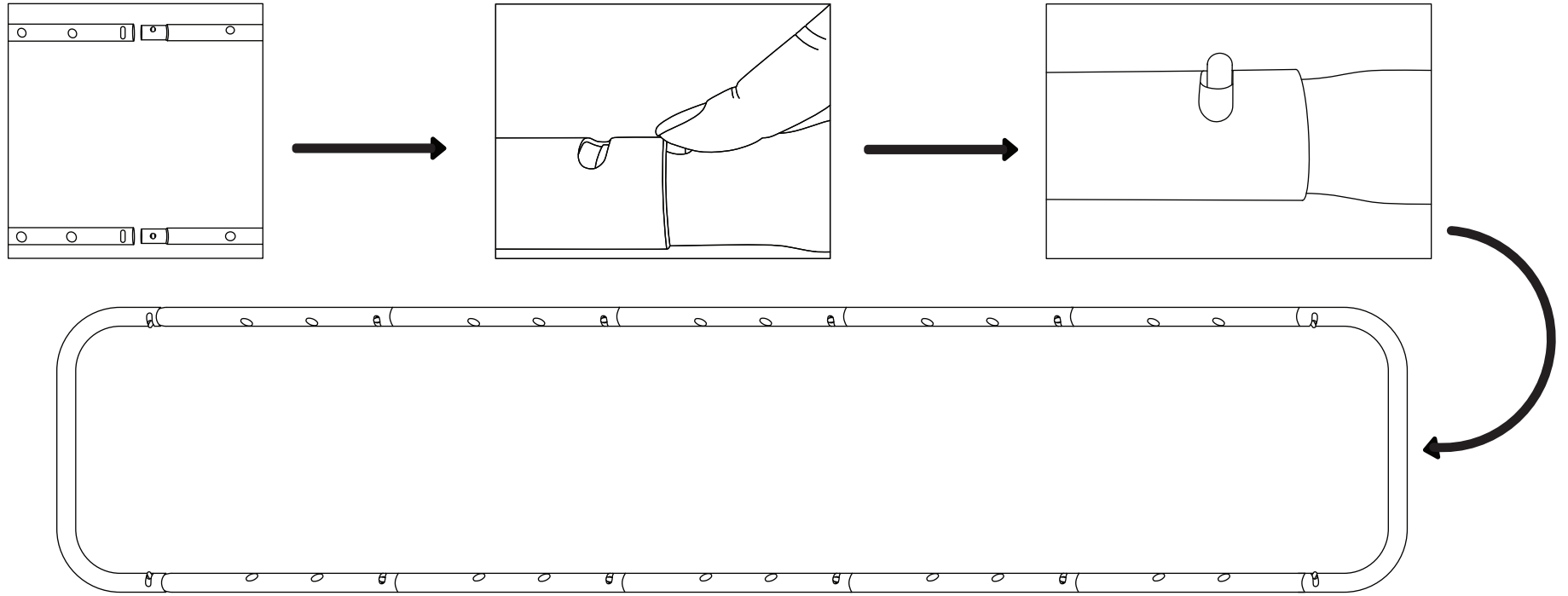


2

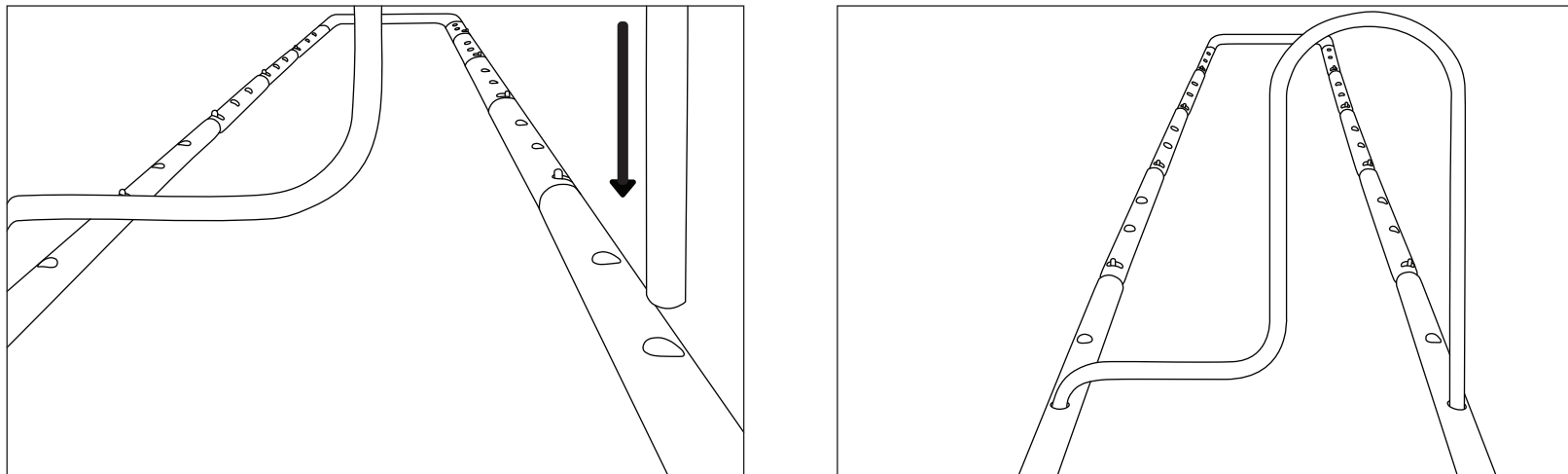
Fit the small end of the frame tube end into the larger end of the next tube by pressing down on the chrome button and inserting until the button snaps out in the long slot at the end of the tube.



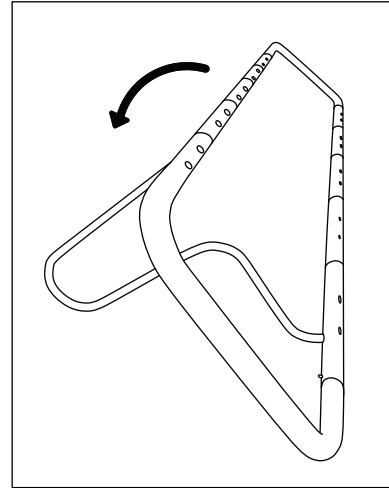
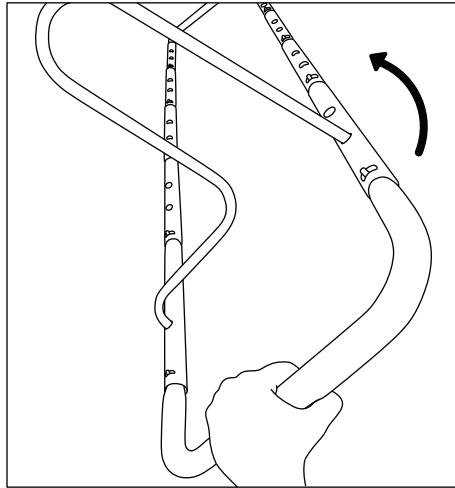
3 Once both frame tube ends are connected, connect the rest of the frame tubes.



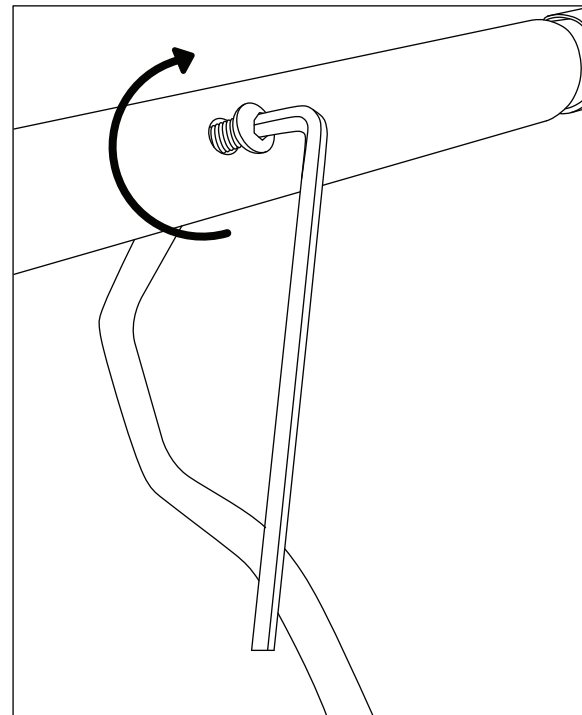
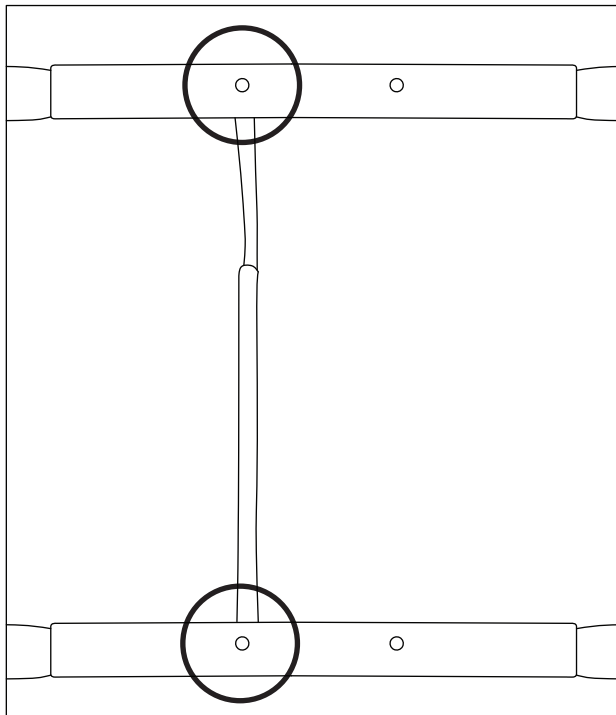
4 Next, assemble the wheel arms by inserting both ends into the large holes in the frame tube.



5 Then, flip the entire base over and locate the two holes for the screws.



6 Thread a screw through each of the two holes and use the hex key provided to tighten it.



7 Repeat steps 4-6 until all wheel arms are secured with screws, then flip base over.

8 Install the wheel arm binders to the back side of the wheel arms by squeezing the arms together at the top & then sliding the binders down to the bottom of the arms.

