

/ Hydralada® 360h HiLift



Get that extra reach.

The 360h Hi Lift has the same low profile chassis as the 300h Compact but includes a longer boom to give the operator more lift height and better reach into the tree.

175kg

Maximum load rating on platform

19hp

Twin cylinder fuel injected petrol engine

3.60m

Max lift to platform floor

Standard Specifications

MAX LIFT TO CAGE FLOOR

3.60 m / 11.8 ft

MAX WORKING HEIGHT

5.60 m / 18.4 ft

AUXILIARY OIL SUPPLY

26 Lit / min | @ 2000 psi

OVERALL WIDTH

2.08 m / 6.8 ft

OVERALL LENGTH

3.80 m / 12.46 ft

WEIGHT

840 kg / 1850 lb

TOTAL LIFT CAPACITY

175 kg / 385 lb

ENGINE

Kohler Command EFI Petrol

DRIVE WHEELS

26 x 12.00 x 12 8 Ply EWP Tyre

OVERALL STOWED HEIGHT

1300mm / 4.26 ft

CASTOR WHEEL

18.5 x 8.50 x 8

STOWED CAGE FLOOR HEIGHT

495 mm / 1.6 ft

HYDRAULIC TANK CAPACITY

25 litres / 6 gallons

FUEL TANK CAPACITY

30 litres / 8 gallons

WHEEL TRACK

2.08 m / 6.80 ft

GROUND CLEARANCE

257 mm / 0.84 ft

CONTROLS

Standard - Hydralada 3 Pedal Foot Control. Optional - 2 Pedal, 6 Pedal or Hand Control.

All specifications are nominal only. Some images on this leaflet may feature other models and optional equipment.

Drive Train & Wheels

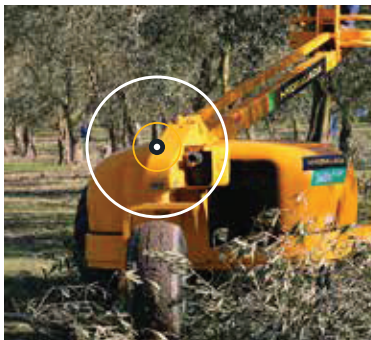
- Fuel Injected Petrol Engine
- 1.25" drive axles
- Independent hydraulic wheel drive
- Single rear castor wheel
- Dynamic braking system
- Automatic Hydrabrake System (option)

Chassis Construction

- Low tail profile
- Smooth unobtrusive chassis and bonnet design
- Externally mounted muffler

Other

- Electric start
- AS/NZS 1418-10 2011 Standard
- OAW 2.08 m
- Weight 850 kg



LOW TAIL PROFILE

Boom pivot further forward for low tail height.

Sleek round bonnets and low chassis design makes this ideal for tight spaces. Has extra lift for taller trees and easily manoeuvres without damaging fruit.



FOOT CONTROL

Hands free operation for productivity in the orchard.

Standard includes three pedals in the floor with centre pedal operating lift/lower of the platform and the two pedals either side operate the respective drive wheels.



INDEPENDENT DRIVE

Manoeuvrable with very tight turning circle.

Drive one wheel forward and the opposite wheel reverse and it will turn on a dime. This makes it extremely nimble and sets the Hydralada machine apart from other types of elevating work platforms.

POWERSHED

www.powershed.com.au

Premium
Distributor