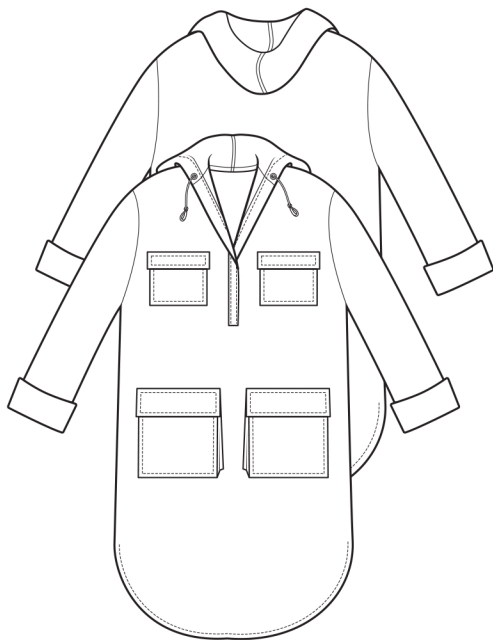


THE HOODED OVERSHIRT



UK size	4	6	8	10	12	14	16	18	20	22
Bust (inch)	28	30	32	34	36	38	40	42	44	46
Waist (inch)	21	23	25	27	29	31	33	35	37	39
Hips (inch)	31	33	35	37	39	41	43	45	47	49
Bust (cm)	71	76	81	86	91	96	101	106	111	116
Waist (cm)	54	59	64	69	74	79	84	89	94	99
Hips (cm)	79	84	89	94	99	104	109	114	119	124

Finished measurements (cm/inches) – SN = side neck – OA = overarm

Length (cm)	107.5	108	108.5	109	109.5	110	110.5	111	111.5	112
SN to hem (inch)	42½	42½	42¾	43	43¼	43¼	43½	43¾	44	44¼
Sleeve OA (cm)	70	70.5	71	71.5	72	72.5	73	73.5	74	74.5
SN to cuff (inch)	27½	27¾	28	28	28¼	28¼	28½	28¾	29	29¼
Bicep (cm)	35.5	36.5	37.5	38.5	39.5	40.5	41.5	42.5	43.5	44.5
on sleeve (inch)	14	14½	14¾	15½	15¾	16	16¼	16¾	17	17½
Bust (cm)	102	107	112	117	122	127	132	137	142	147
at underarm (inch)	40	42	44	46	48	50	52	54	56	58
Hem at top (cm)	121	126	131	136	141	146	151	156	161	166
of curve (inch)	47½	49½	51½	53½	55½	57½	59½	61½	63½	65½

Fabric required

120cm wide	3.00	3.00	3.00	3.00	3.00	3.50	3.50	3.50	3.50	3.50
150cm wide	2.20	2.20	2.20	2.20	2.20	3.00	3.00	3.00	3.00	3.00
48" wide	3½yd	3½yd	3½yd	3½yd	3½yd	4yd	4yd	4yd	4yd	4yd
60" wide	2½yd	2½yd	2½yd	2½yd	2½yd	3½yd	3½yd	3½yd	3½yd	3½yd

Fabric Suggestions All light to medium weight woven fabrics: cotton, linen, denim, chambray, Tencel, viscose.

Also required – 0.5m / ½yd lightweight fusible interfacing, 4m / 4½yd x 12mm / ½in bias binding, 1.5m / 1¾yds cotton tape for the hood drawstring, 3 x 20mm buttons or Velcro for the front fastening and matching sewing thread.