



# Installation Instructions and Warranty Information

4

## PERTRONIX PERFORMANCE BRANDS EMISSIONS CODES

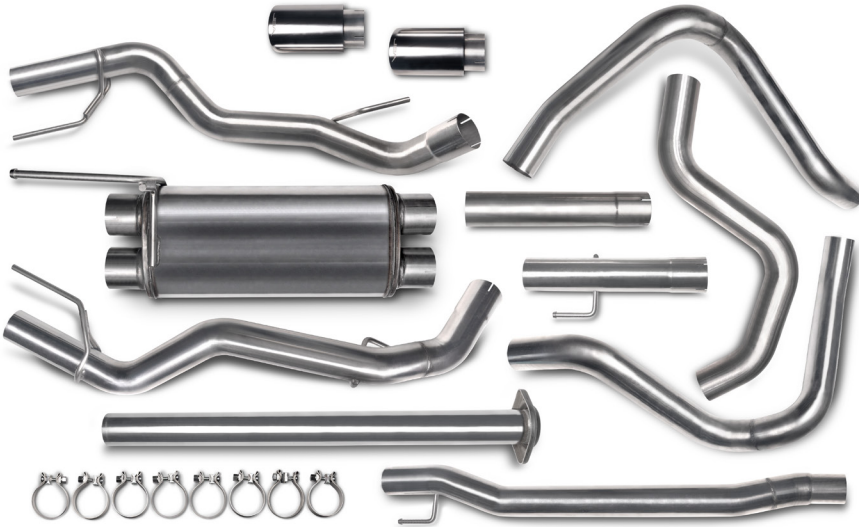
This Product is considered a Replacement Part per CARB and EPA regulations for emissions compliance and is legal for sale and use on specified vehicles in all 50 states as stated in Manufacturer's Application Guide and Installation Instructions.

REV 3/2022

### Part # 30-2547

### 2017-2020 Ford F-150

- Raptor Super Cab
- Raptor Super Crew Cab



## PARTS LIST:

- 2 - 3" Mid-Pipes
- 2 - 3" Extension Pipes (*for Super-Crew Cab only*)
- 1 - JBA Performance Muffler
- 2 - 3" Over Axle Pipes
- 2 - 3" Tail Pipes with Chrome Exhaust Tips
- 10 - 3" Accu Seal Clamps

## TOOLS NEEDED:

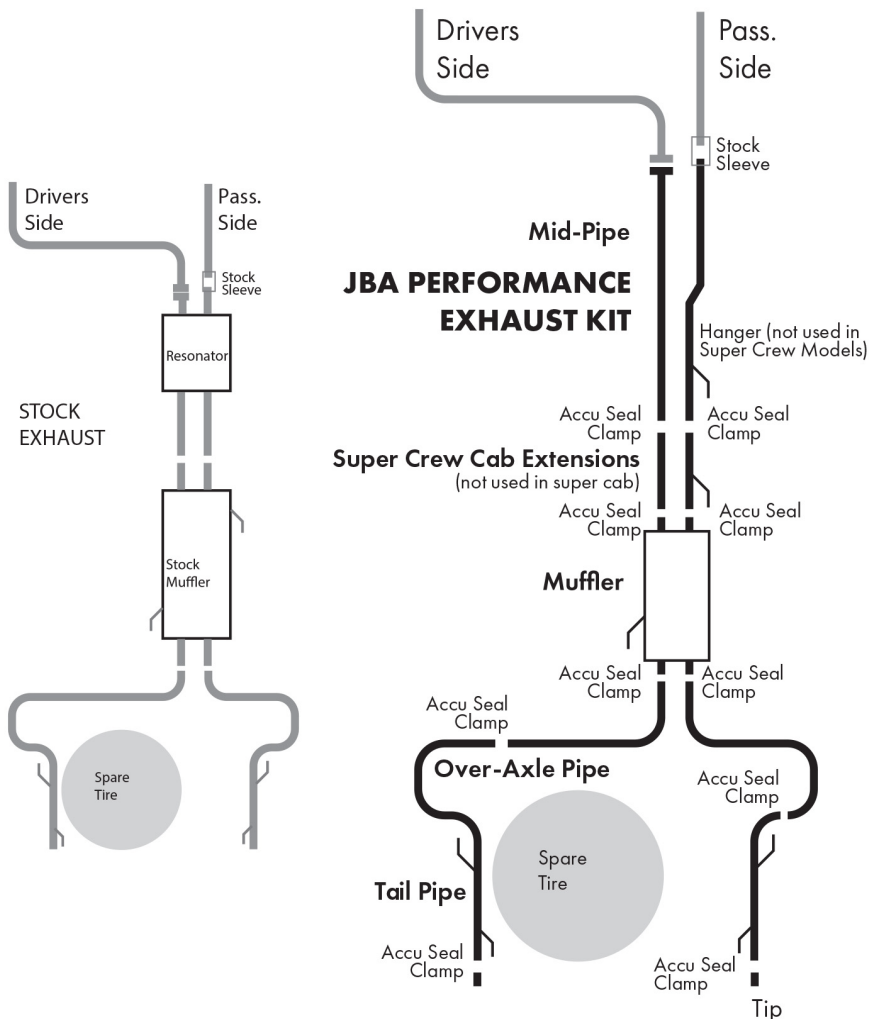
- 10mm socket or box wrench
- 13mm socket or box wrench
- 15mm socket or box wrench
- Flat-head screwdriver
- RTV or Thread Anti-Seize
- Deadblow Hammer
- Liquid Soap
- Metal Wire Snips
- 2 - 3.5" Hose Clamps

## NOTES:

- 1) All stainless-steel exhaust systems expand about 1" rearward when exhaust temperature rises. Keep this in mind when mounting components.
- 2) Use Anti-seize or RTV on the threads.
- 3) Keep all stock parts aside until you are finished with the new exhaust installation.
- 4) Keep all clamps, brackets, and hardware to possibly re-use if needed.
- 5) Be sure vehicle is secure on jackstands, or lift.
- 6) Wear proper PPE (Personal Protection Equipment) such as goggles and gloves.
- 7) After installation, drive the vehicle for approx. 100 miles, then get back under and tighten all brackets and clamps as things may shift with heat/cool cycles.

**CHECK THE BOX TO MAKE SURE YOU RECEIVED ALL THE PARTS LISTED ABOVE BEFORE STARTING THE REMOVAL OF THE EXISTING EXHAUST SYSTEM. IF ANY PARTS ARE MISSING, PLEASE CALL JBA TECH AT 909-599-5955.**

**ALLOW THE TRUCK TO COOL COMPLETELY. HOT EXHAUST CAN AND WILL CAUSE INJURY INCLUDING BURNS.**

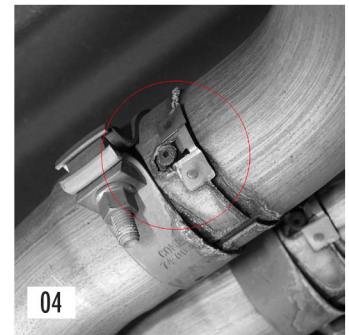
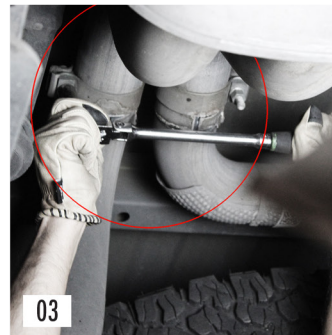
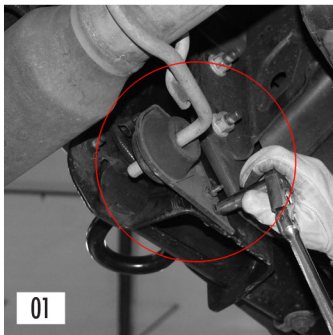


# Installation Instructions and Warranty Information

**STEP BY STEP STOCK REMOVAL:** *Start at the back of the truck.*

## PASSENGER SIDE:

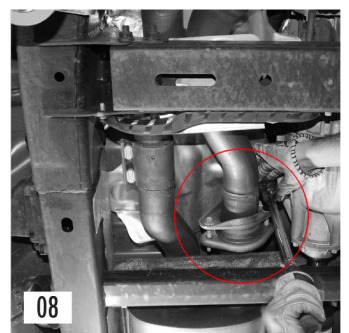
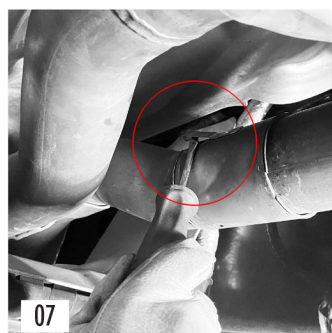
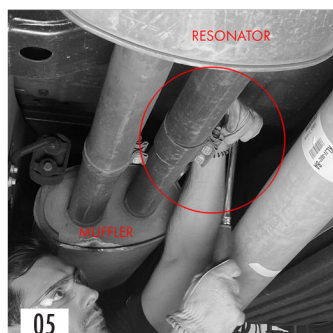
1. Remove brackets holding the rear of the over-axle/tail pipes to the bumper assembly. (01)  
**PRO-TIP:** When removing the hanger brackets mark for location and orientation.
2. Remove bracket holding front hanger of the over-axle/tail pipes from the frame cross member. (02)
3. Loosen clamps holding the over-axle/tail pipes to the rear of the muffler. (03)
4. You will need a flat screwdriver to bend up the retaining clip tab holding the tail pipe to the muffler ass'y. (04)  
Remove the over-axle/tail pipes from muffler and set aside out of the way.
5. Remove hanger brackets from over-axle/tail pipes and set aside.



## DRIVER'S SIDE: *Repeat steps 1-5 above.*

6. Loosen clamps holding the front of the muffler to the Mid-Pipe/Resonator assembly. (05)
7. Remove muffler assembly away from the exhaust hanger brackets. (Do not remove these two hanger brackets mounted to the vehicle.)
8. Remove hardware mounting the driver-side Mid-Pipe/Resonator assembly. (Set hardware aside for use in installing the new totally awesome JBA Performance Exhaust kit.) (06)
9. Loosen sleeve holding the passenger-side Mid-Pipe/Resonator assembly. The sleeve has a flat metal tab holding the sleeve in place. Use a flat-head screwdriver to bend it away to free the sleeve. (07)
10. Remove Mid-Pipe/Resonator assembly from the head pipes. The passenger side sleeve has a metal tab that will need to be pried up with a flat head screwdriver to remove pipe. (08)

**Note:** The stock system uses the tailpipe and over-axle pipe as one piece. JBA Performance Exhaust has two separate pipes in this application.



Continues



# Installation Instructions and Warranty Information

## STEP BY STEP JBA PERFORMANCE EXHAUST INSTALLATION:

**Start at the front of the vehicle and install everything loosely by hand. Do not tighten and torque down as you go. After fitment and final adjustments of the entire system, torque down all clamps and hardware to specification.**

1. Insert hanger\* to rubber hanger clamp on side frame rail and then insert front end of the passenger side mid-pipe to the sleeve on the head-pipe. (09/10)

**\*NOTE:** Hanger on this section of pipe is used in Super-Cab models. For Super-Crew Cab models use the hanger on the Extension-Pipe included in the kit.

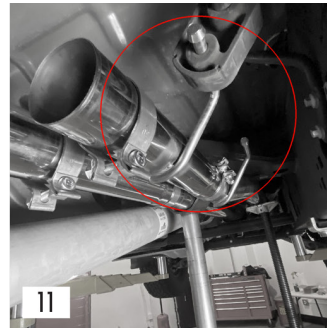
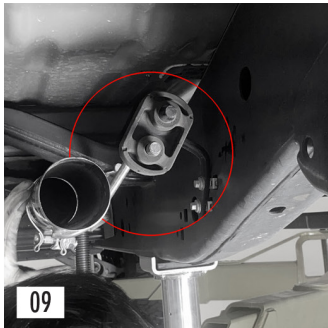
- a. Attach passenger-side Extension-Pipe for Super-Crew Cab models to the hanger clamp on the side frame rail. Attach the front of the Extension-Pipe with AccuSeal Clamp provided in the kit to the rear of the passenger side Mid-Pipe. (11)

**PRO-TIP:** When installing the AccuSeal Clamps think about where you want the nuts for ease in installation and occasional tightening.

**NOTE:** Remember to loosely tighten only. This makes the installation easier, and you will need to adjust the system when it is all installed before final torque-down.

2. Install the Mid-Pipe with the flange to the flange on the driver-side head pipe coming from the catalytic converter. (Hand tighten nuts). (12)

**NOTE:** Rotate pipe so the flattened side is on the bottom to give maximum frame clearance.



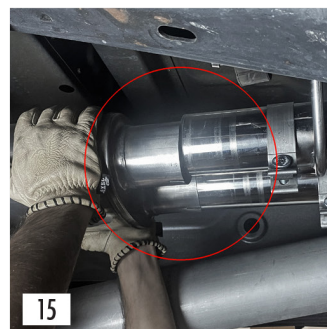
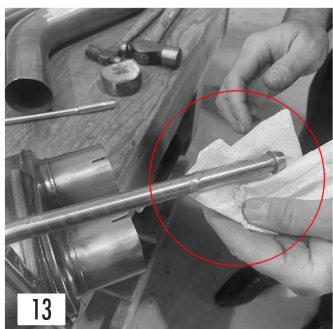
**PRO-TIP:** Use rope/string/zip-ties to the passenger pipe to temporarily hold rear of the mid-pipe up.

- a. Attach drivers-side Extension-Pipe for Super-Crew Cab models to the rear of the driver's side Mid-Pipe with the Accu-Seal Clamp provided.

**PRO-TIP:** Add a goop of liquid soap to the Muffler hanger to make installation a bit easier to slip into rubber bracket. (13)

3. Install Muffler by inserting the hanger into the stock hanger bracket. (14)
4. Slip the front openings of the muffler into the Mid-Pipe with the Accu-Seal Clamps provided. (15)
5. Install passenger Over-Axle Pipe into muffler with Accu-Seal Clamp in place. Route pipe vertically over the axle.
6. Install the driver's side Over-Axle Pipe into muffler with Accu-Seal Clamp in place. Route pipe laterally over the rear-end. (16)

**NOTE:** In this case, tighten the clamps on the Over-Axle Pipe to the Muffler as the pipes tend to lean together.



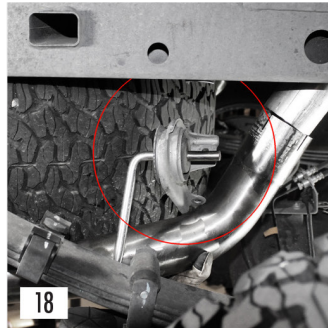
Continues



# Installation Instructions and Warranty Information

## INSTALLING TAIL PIPES AND TIPS

7. Install the stock passenger side Tail-Pipe hanger brackets on Tail-Pipe hangers and let dangle. (17)
8. Slip Tail-Pipe into the Over-Axle Pipe with Accu-Seal Clamp in place.
9. Align original front Tail-Pipe hanger bracket with holes in frame rail and tighten with original hardware. (18)
10. Align original rear Tail-Pipe hanger bracket to rear of rear bumper assembly and tighten with original hardware.
11. Grab Tail-Pipe firmly and adjust in proper position clear of any possible contact points (19)
12. Repeat steps 7-11 on the Driver's Side
13. Install Exhaust Tips with provided clamps and tighten securely. (20)

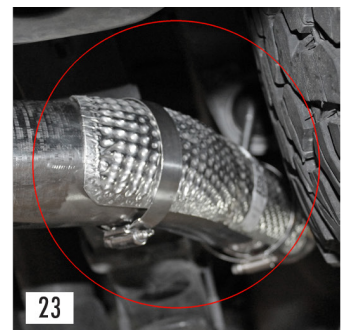
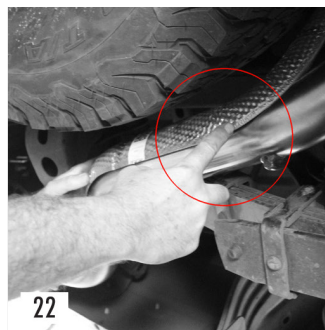


## ADJUST ENTIRE SYSTEM

*Now is the time to make all final fitment adjustments. Inspect entire length of exhaust system and determine areas to get optimal clearance of the frame rails, spare tire, etc..*

Look at the tail pipe exhaust tips and determine equal on each side in vertical alignment and amount coming out of the rear of the vehicle. (21)

2. Adjust tail pipes to secure ends in equal spacing.
3. Adjust and tighten Over-Axle Pipe to tail pipe Accu-Seal Clamp
4. Adjust and tighten Accu-Seal Clamps to Over-Axle Pipes with JBA Performance Muffler
5. Adjust and tighten Accu-Seal Clamps from Muffler to Extension Pipe (if installing on Super-Crew Cab models).
6. Adjust and tighten Accu-Seal Clamps from Muffler to Mid-Pipe (if installing on Super-Cab models)
7. Adjust and tighten hardware and sleeve from Mid-Pipes to head-pipes
8. Make one final pass and try to move system and adjust where necessary.



### Added Feature

In some installations, the Tail-Pipe may be close to the spare-tire. If this is the case for your application snip the heat shield off the original pipe and trim accordingly (22) to fit onto your new exhaust system with a pair of 3.5" hose/pipe clamps. (23)

**Drive vehicle and listen for any rattling of the system. After about 100 miles review entire system and tighten where necessary.**