

Instructions to replace ION brake torsion spring on mounted ski

This bulletin addresses a potential issue users may experience with ION bindings in where the brake torsion spring has failed prematurely.

Identification of Affected Parts



Corrective Action

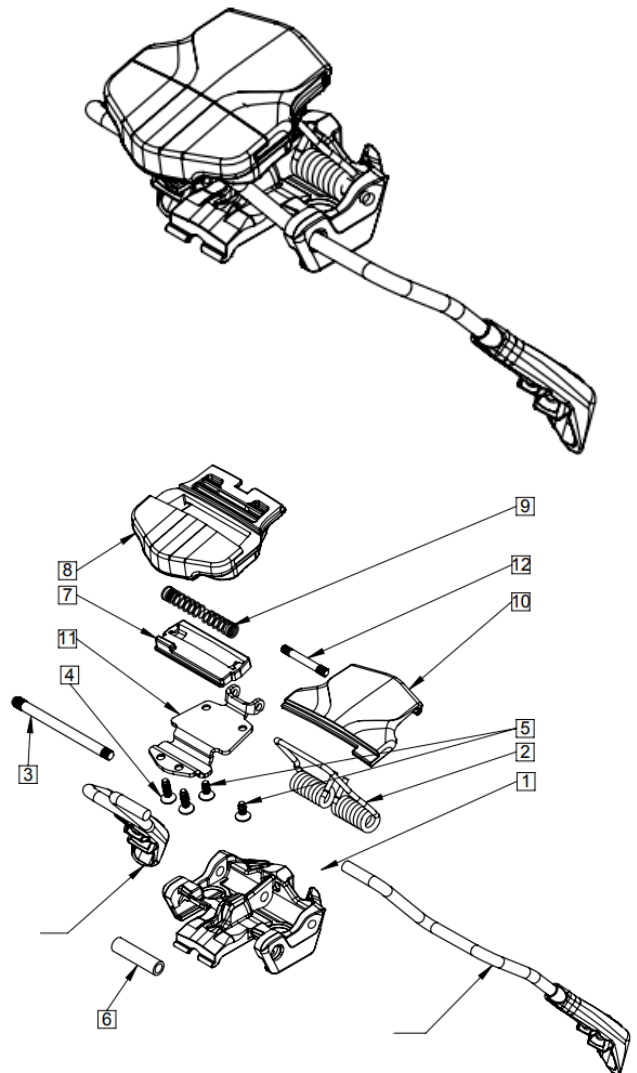
Inspect the brake subassembly to determine if the spring is broken or not responding correctly. In most cases, if the spring is broken the brake will not spring back into position or will do so very slowly. If brake spring is found to be broken, G3 will send a replacement kit which includes a brake torsion spring and a punch pin. This procedure does not require demounting of the binding from the ski.

Parts Information

A replacement brake torsion spring and is available from G3.

Item# 004689 – Brake torsion spring

Item# 004711 – Punch Pin



Contact customerservice@genuineguidegear.com or call customer service at 1.886.924.9048.

Brake sub-assembly parts required in repair

Part #	Part Name
1	Brake base
2	Brake torsion spring
3	Brake spring pivot pin
4	M3x10 T10 Screw
5	M3x7 T10 Screw
7	AFD spring housing
8	Brake platform
9	AFD spring
10	AFD slider
11	Brake platform cover

Equipment

- Ski Stands
- Hammer
- Pilers
- Vise-Grip
- T10 or 7/64" Torx driver/Allen Key
- Phillips screwdriver
- *Wide flathead screwdriver
- Punch Pin (comes with repair kit)
- Brake Torsion Spring (comes with repair kit)

Replacement Procedure

1. To begin the brake torsion spring replacement the heel turret will need to be removed. To do this please watch the "How to Remove and Install ION Heel Turrets" located on the GenuineGuideGear YouTube page, link below.
<https://www.youtube.com/watch?v=UEqlqwq6TO0>
2. Once the Heel Turret has been removed next the brake spring cover will need to be taken off by

prying it off with a screwdriver or needle nose pliers. Set aside to be reinstalled later.



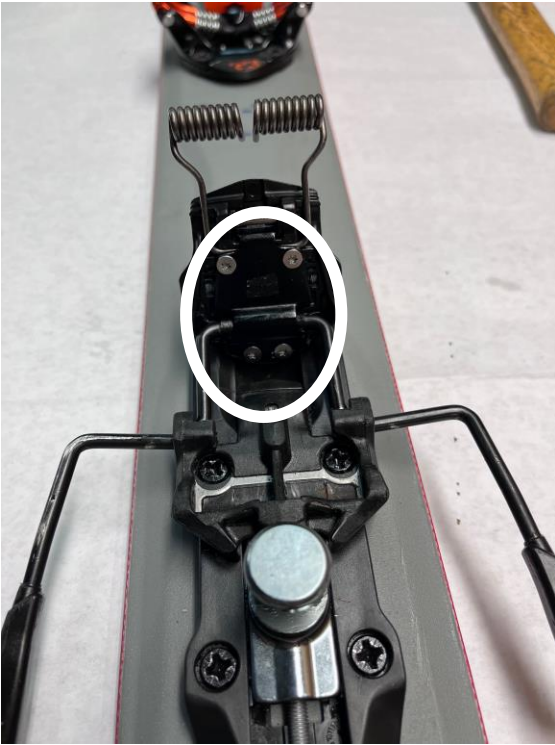
3. Next the brake spring pivot pin(3) will be removed by using the punch pin as a guide to punch the pivot pin(3) out with a hammer. The pivot pin is directional and will only come out one way, if you are looking along the ski towards the tip the pin will come out to the right, see photos below. Once the pin has been punched out enough to expose the knurls on the other end pull the rest out with pliers.



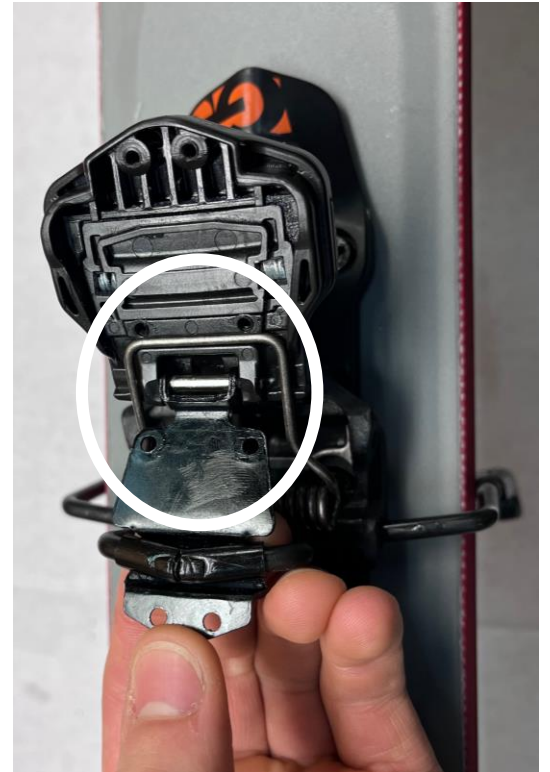
4. To free the brake torsion spring(2) from the brake base(1) place the brake arms perpendicular to the ski as shown in the photos below. Then pull/push the brake torsion spring(2) towards the front of the ski, the two prongs of the spring should pop out relatively easy.



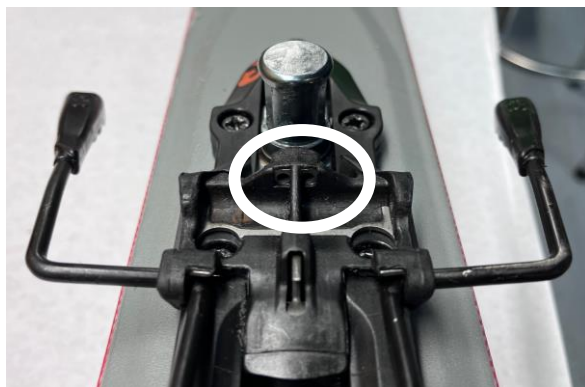
5. Flip the brake over to expose the 4 torx screws(4)(5) and use a T10 or 7/64" driver or allen key to remove them and place them aside for later. The two screws in the top of the photo that are wider apart are shorter than the bottom two that are close together.



6. Remove the broken or faulty spring from the brake platform cover(11) and replace with the new one in the same orientation as before. The brake torsion spring(2) and brake arms will fit neatly into slots underneath the brake platform(8) and brake platform cover(11) respectively, see photos below.



7. While holding the brake platform cover(11) and brake platform(8) together rotate the brake arms until they are parallel with the ski and use vise-grips to hold them together while you place the screws back into their correct spots detailed in step 5, see photo below. Take care not to cross thread the inserts.



Note: This next step can be challenging depending on how wide your ski is compared to your brake arms. If you have a wider ski and skinnier brake arms and cannot rotate the brake arms slightly towards the tip you will need a wide flathead screwdriver.

8. Once the screws are secured in place remove the vise-grips and rotate the whole piece back so that the brake arms are angled slightly towards the tip of your ski and fit the two prongs of the brake torsion spring(2) into the slots of the brake base(1).
 - a. If you have a wider ski and cannot rotate the brake arms like this, you will need to use a wide flathead screwdriver inserted through the front of the binding underneath the brake platform(8). Place the tip of the screw on top of one of the prongs and use your other hand to press down hard until they fit into the insert. Repeat this for the other prong.



9. Place brake pivot pin(3) back into place, it should fit easily into one of the holes in brake base(1) when it's in the correct direction and can be secured into place with a hammer until both ends of the pin are flush with the sides of the brake base(1).



10. Place the spring cover back in place and press it down until it clicks into place on both sides.
11. Now the new brake torsion is completely installed and can be quickly checked by pressing down on the brake a few times to ensure all the components are secure.
12. Finally go back to step 1 to install the heel turret back into place and you are all done!

Additional Information

For the latest information and updates, refer to

www.genuineguidegear.com.